

High Desert Turning

www.nmwoodturners.org

Calendar Year Membership: \$25 individual, \$30 family
Contact Bill Baca at billbaca@msn.com or 425-218-4562



OFFICERS, DIRECTORS, & COMMITTEES FOR 2018

President:	Hy Tran	844-5417	Newsletter:	Roger Umber	249-0444
Vice President:	Rick Judd	612-280-8300	Photographer:	Kathy Knorr	847-819-2515
Treasurer:	Bill Baca	425-218-4562	Raffle:	Dean Cross	575-644-8945
Secretary:	< OPEN >		Librarian:	Michael Anderson	575-209-0172
State Fair:	Bill Mantelli	298-2603	Equip/Workshops:	Scott Eckstein	505-270-0516
Webmaster	Mike Gardner	298-3190	Green Wood-ABQ:	Greg Hoefler	228-1606
Logistics:			Green Wood SF:	Eric Hester	816-509-1333
Lead Video:	Derek Roff	438-1820	Assistant Video:		

NEXT REGULAR NMWT MEETING

Oct 6, 2018

9:30 A.M. to 12:30 P.M. at North Domingo Baca Multigenerational Center (NDBMGC), 7521 Carmel NE, Albuquerque NM

Turning with a natural edge - John Ellis, Jake Jacobson and Hy Tran

They will start with show-and-tell with some pieces and photos. Then discuss types of natural edge: Side grain (natural edge bowls) and end-grain (natural-edge goblet-like, with or without stems), and irregular burls. Preserving the bark vs removing the bark. Age of wood, type of wood, whether the wood was harvested in spring or autumn/winter. Ways of helping bark stick.

Then demonstration on cutting and mounting (and remounting) the blank to retain symmetry during

turning. Roughing the bottom side & forming the tenon. Direction of cut ("wrong direction") at the rim to prevent rim tear out. Turning the inside. Reversing (again) and cleaning the foot

FUTURE PROGRAMS/ ACTIVITIES

Oct 6	TURNING WITH A NATURAL EDGE
Nov 3	ANNUAL GENERAL MEMBERSHIP MEETING AND TBA
Dec 1	GIFT EXCHANGE

ANNUAL MEETING

The Annual Meeting will be held at 9:30 AM until 10:30 AM on the first Saturday of November at **North Domingo Baca Multigenerational Center (NDBMGC)**, 7521 Carmel NE, Albuquerque NM. This will serve notice of a different meeting time and place than what is stated in the by-laws.

PRESIDENT'S CENTER



Are you ready for Fall? Remember that we now meet at the new club meeting location, at North Domingo Baca Multigenerational Center (NDBMGC), 7521 Carmel NE, Albuquerque NM. The doors open at 9:00am, and the meeting will run from 9:30am to 12:30pm.

To get to NDBMGC: From Paseo Del Norte, go to Wyoming. Turn North on Wyoming to Carmel, turn left on Carmel, then, take the second driveway to the right into the parking lot for NDBMGC. Currently, our meeting room is at the NE end of the building on the first floor.

Our demonstration will be natural edge turnings. We have a panel of demonstrators who will take you from blank to finished product. Don't miss it! We're still working out the various kinks of the new location, but we're getting better at it. For now, please don't enter the meeting room at 9:00am (unless you would like to volunteer to help set up the lathe and the A/V equipment). For those of you who are helping set up: Shane Yost is setting up the lathe, and the room; Derek is setting up A/V. In addition, Ray Berry donated a coffee percolator and two tubs of ground coffee to the club, so someone should help set that up. The photographer is taking pictures outside the meeting room. Please don't just hand the photographer the piece and then walk away—in addition to the photo of your piece, the photographer needs to know who you are and what your piece is—otherwise, the photo won't get into the club website.

Talking about the website: Dave Stein and Mike Gardner are upgrading the content management software used for the website. Please bear with us while that's being done.

State Fair was a great success. Photos for some of the pieces are on the website, and I'm looking forward to a more detailed article with more photos!

With the changing seasons and the weather getting cooler, many of us have workshops in our

garage—and we may now be working with the doors closed. Remember to have good ventilation (especially if you use a space heater—be aware of combustion products for wood, gas, or oil space heaters, and sawdust for all space heaters). You can't just have your sanding dust fly outdoor in the breeze, so please remember your lung protection!

Finally: Nominations for the club officers will open in October, with the election at the November meeting. Read the article from our Nominations committee chair in the newsletter! Even if you don't want to be elected, we have a number of appointed chair/co-chair positions that help with the running of the club. Please consider helping in one of the club positions!

BOARD MEMBERSHIP – PROPOSED CHANGES & POLICY CHANGE (BYLAWS) ON BOARD ACTIVITIES

The Board of Directors has recently discussed the issue of finding willing Board members each year, and the composition of the Board going forward.

According to the current Bylaws, the Board Officers (President, Vice-president, Treasurer, and Secretary) have the authority to name other Board members and Committee Chair as needed by the club, and those positions may change from year to year. The Board composition we recommend for 2019, and will recruit nominations during October, are:

President (officer)
Vice President & Program Chair (officer)
Secretary (officer)
Treasurer (officer)
Immediate Past President – ex officio
State Fair
Webmaster
Logistics (has responsibility for room setup)
Lead Video & AV
Newsletter Editor
Photographer
Raffle
Librarian
Equipment

Workshops/Special Events – **new board position** (handles professional visitor events, special workshops, special demos such as WWS and Explora)

Green Wood-ABQ

Green Wood SF

At Large – **new board positions**, two members serving alternating two-year terms – must attend meetings.

NMWT Sales (logo clothing)

The new positions of At-Large have been created to encourage new member to serve on the Board. The intention is that after serving as an At Large member for one or two years, the member would have interest in taking a regular Board role.

In the past, one requirement that has hindered many people from volunteering is the requirement to be a board member, including the need to attend all board meetings. Some potential volunteers worry that board members may have liability problems, and some do not wish to devote as much time to board membership the meeting attendance would require. We are proposing some changes to our Bylaws that deal with these concerns.

In November, we will hold a special Membership Meeting, as we do every year to elect Board Officers. This year, in addition to the election, we will propose some amendments to our Bylaws that will permit the following: (Draft language shown below.)

“Board Officers may select additional Board Members or other Committee Chair as needed for the organization to function efficiently each year. The Officers may designate whether the functional volunteers will be voting Board Members, or non-voting Committee Chair. Board Members are expected to attend regular Board meetings and have the right to vote, while Committee Chair are not required to attend and do not vote on board motions. They may attend, as may any member of the organization.”

During the remainder of October, we will be soliciting volunteers to serve in all of the positions listed. We welcome any volunteers for these positions. Any volunteer may serve as a regular Board member or a Committee Chair. If you have an interest in serving, please contact Nominating Committee chair John Ellis at nmwtwebman@aol.com, or by phone at 505 771-1773.

SEPTEMBER PRESENTATION

Tom McLarty gave a thorough presentation on how he uses Turquoise and epoxy to fill both decorative carving areas and natural cracks in turned pieces. He noted that due to the time needed for the epoxy to cure, he would not be able to do a single project from start to finish but had prepared the various steps in the process to show during the demo.

He began by showing how he finished a piece after the epoxy is applied and hardened. The epoxy/stone fill needs to cure at least 24 hours before it can be worked. If not, it will simply ball up on cutters. Tom had prepared an example of a peppermill base and filled a ring around the middle of the piece. He noted that he finishes the wood prior to applying the epoxy fill, since it can stain the wood if applied to bare wood. The mill part was mounted between centers. Using an EasyWood round tool, he began to scrape the inlay very gently with the lathe at medium speed. The cutting process must be done slowly, letting the tool do the work, and not pushing too hard. It took several minutes to complete the turning of a ring that was about ¼” wide, producing very fine shavings of epoxy. Any Turquoise cut in the process was not visible in the shavings.

After the scraping with the tool, he proceeded to sand. He used Abralon sanding pads, starting with 180 grit, then progressively moving through 320, 500, 1000, 2000, to 4000 for the final grit. He then applied friction polish to complete the finishing. Tom noted that the depth of fill was only about 3/16”.

Tom uses 5-minute epoxy available at Lowes, which is mixed 50/50 of each of the two parts.

It's important to get the mix right for it to harden properly. On work such as the peppermill, he recommends applying it in at least three steps, since the epoxy will flow out of the groove if turned upside down. On flat pieces such as plates, it can be applied all in one step, although time is a factor while the epoxy mixture is still workable.

He cut a new groove on another piece and mixed some epoxy to show that process. On a scrap piece he cut a new groove about an eighth of an inch wide, and fairly shallow, about 3/16". He showed how he works the epoxy mix into the grooves, since it is still pliable. Tom noted that he might combine medium and fine turquoise, and for large pieces may also use coarse. He noted that while the epoxy mix is still soft you can push it into the cracks.

DELANCEY STREET FOUNDATION

Please consider donating pen blanks, kits and mandrels and sanding materials for a worthwhile project with the not for profit Delancey Street Foundation in Espanola. A 1/2 day donation of your time to visit with the Foundation and the wood shop would be lovely, and to show them how pens are made and assembled.

While visiting the "Ranch" as it is called, you can see the wood working shop, turning, upholstery, car repair and event space and gardens the residents support. They also have a moving company and rescue horses that the residents care for and train. And of course, the annual Christmas Tree lots around the state.

To learn more about the Foundation, please visit Delancey Street Foundation, <http://www.delanceystreetfoundation.org> and take a look at this wonderful treatment center. Contact is Kathy Knorr, kathyknorrSF@gmail.com or 847-819-2515. Thank you!

WIT CLASS

WOMEN'S JEWELRY MAKING 1 DAY CLASS!

The NMWT are sponsoring a Women in Turning (WIT) day on Friday October 26, 2018 at the Santa Fe Community College. The time will be from 9AM-3:00PM with a 1/2 hour for cleaning the wood turning room. There are 8 lathes, and we can accept 8 women interested in learning to turn or any experience! tools, wood and supplies will be supplied. If you have wood you love, bring it along!

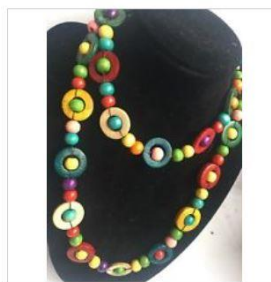
The Topic is Jewelry! Sally will teach us how to turn several different pieces and we can all wear them



home!

The fee will be \$40 for WIT or AAW members, and \$50 for not yet members!

Payment may be made in the class. Visitors are welcome to join us and get enthused with us!



Sally Ault, from San Diego, will be joining us as a demonstrator. Sally presented at our Club 2 years ago. She is a frequent demonstrator and recently taught at Arrowmount. Visit her website!

<http://www.sallyault.com/my-gallery/>

More Information:

<https://www.facebook.com/events/2142070189412070/>

Contact Kathy Knorr, KathyKnorrSF@gmail.com or 847-819-2515 (cell) or 505-983-8284 (home)

BEADS OF COURAGE

Beads of Courage: The size of the box, as a minimum, must be 5 inches wide x 6 inches deep. These boxes do not have to be round, they can also square. Of course, you can make them larger, to allow the kiddos to put all their beads in a safe place. Go to www.beadsofcourage.org to see to whom you will be making these boxes. Also, check out this story <https://youtube/WMCCJxO9mnY>. Don't forget to bring your boxes to the meetings and put them into the

instant gallery. Scott Eckstein is our official representative for the local hospitals, give him your box(s) for delivery to the hospitals.

SILENT AUCTION

Silent Auction will be held during each NMWT workshop to raise money for a scholarship fund. The earnings from this fund will be used to reduce member's cost of attending hands-on sessions with professional turner-demonstrators at the discretion of the NMWT Board of Directors.

You may place any item that you think will sell in the auction. Bring only items relating to wood-working or woodturning. There will be auction sheets on a table outside the WWS meeting room. Take a sheet, write the name of the item on the sheet and put your item with the sheet. If you want the item to go for a certain amount, put your name and the minimum bid on the sheet. The Auction will be over at the end of the break. Money will be collected for items sold during the last part of the meeting. All money collected will go into the scholarship fund. Items not sold will be returned to the owner and the owner will remove the items from Woodworkers Supply.

SCHOOLS

Santa Fe Community College www.sfcc.edu

Santa Fe Community College offers both credit and noncredit courses taught by some of the most prominent artisans in the woodworking field. Classes are offered in the Fall, Spring, and Summer sessions. For more information on SFCC classes, information can also be found at SFCC's web site.

DISCOUNTS & REBATES

WOODWORKER'S SUPPLY

www.woodworker.com

Meeting Day Specials for the Sept 1st meeting will be announced at the meeting. The specials are good thru Monday.

CRAFTS SUPPLY

www.woodturnerscatalog.com

Offers a discount to members on large orders. Craft Supply has implemented a new club support program.

Visit their web site or phone Kathy Lawrence at 1-800-551-8876

NORTH WOODS, LLC

www.nwfiguredwoods.com

PO Box 808 Forest Grove OR 97116

800-556-3106, 503-357-9953

Free shipping to AAW folks for any order over \$99 checkout use coupon code "FREESHIP99". Your discount will automatically be calculated. *



*Please note that FREESHIP99 does not apply to all products on our site, such as, but not limited to clearance boxes/items, Norfolk Island Pine rounds and wood slabs. For more information or if you have any questions feel free to reply to this email directly.

PACKARD WOODWORKS: THE WOODTURNER'S SOURCE

www.packardwoodworks.com/

Specializes in woodturning tools and supplies with a catalog available.

215 S Trade St, Tryon, NC 28782

1-800-683-8876

RUGBY ARCHITECTURAL BUILDING PRODUCTS

1050 18th St. NW (505) 924-2270

NMWT members receive Wholesale Prices. Rugby's have hardwoods, Thermofused Melamine, plywood, veneers, and furniture grade white pine.

STOCK BUILDERS SUPPLY

www.stockbuildingsupply.com

5815 Edith Blvd NE

Albuquerque, NM 87107

(505) 345-2865

Wholesale Prices to NMWT Members

CRANE MOUNTAIN WEAPONS

Contacts: Pat, Marti, or Joe - 271-0797. This business uses exotic woods for gunstocks and sells off-cuts as turning blanks.

LUMBER & MILLING SERVICES

Wes Thompson 505-384-2544
Doug Malmstrom 505-907-3015
Custom milling of your lumber or ours.

FOR SALE

Remember, your items for sale will run for one month unless you request an extension.

There is no charge for listing items, and we welcome members to use this space for anything related to woodturning.

For sale: : One stage rotary vane vacuum pump, Model RS-1.5, 4CPM, 1/3 hp. \$50 Contact Jose Sena (505) 552-1002.

For sale: Used SuperNova2 Chuck with a 1" - 8

TPI adapter Also includes the wood screw. \$110 OBO
Please contact
Mike Smukula
505-263-9591 or



MikesVintagePens@gmail.com.

You can also run an ad to FIND or TRADE something.

INSTANT PHOTO GALLERY

The photographer will only be available until 9:25 A.M. on the day of the meeting to take photos of the instant gallery items.



John Ellis - Pine Turquoise Inlay bowl



Ralph Watts - Maoki Sailer



Ralph Watts - Sampan-hollow form



Ron Phillips - Ash Goblet



Ron Phillips - Cottonwood Burl Goblet

MENTORS

Members are always welcome to contact the people on the following list for guidance to better turning ideas, and techniques -- Free to members so give a Mentor a call!

Name	Phone	Description
Bill Zerby	263-6632	Basic spindle turning & tool sharpening
Irling Smith	865-9230	Segmented turning & design
John Ellis	771-1773	Basic turning, plates, tools & handles
Alan Becker	467-8382	Intermediate Hollowing
Ron Phillips	(505) 553-6139	Beginning Basic and Intermediate Turning. Also, specialty tools, rests & steadies
Ralph Watts	500-5859	Advanced turning, carving, coloring, and finishing
Ron Bahm	881-8845	Pen turning
Hy Tran	(505) 797-2041	Beginner and Novice
Mike Heiser	(505) 388-4678	Beginning Basic and Intermediate Turning.
Jim McLain	(575) 517-6535	Open and closed forms, especially southwest forms, decorative methods, including inlay and coloring

LIBRARY CORNER

A good selection of educational DVD's is available for check out during club meetings.

DVD Rental

Please use and return DVD's in one month if possible and donate \$1.00 for each DVD checked out to help with expenses. If you encounter any problems with DVD's, please notify Michael of those problems.

LOGO WEAR SHIRTS / HATS

Prices for NMWT's Shirts and Hat

Caps (Baseball)	\$12.00
Long Sleeve Denim Shirt	\$29.00
Short Sleeve Denim Shirt	\$29.00
Short Sleeve Snap Closure Shirt	\$29.00
Polo (golf) Shirt W/Pocket	\$27.00
T-Shirt V-Neck	\$19.00
Smocks	\$50.00



- All items include embroidered Logo
- Names Embroidered on Shirt \$5.00
- Contact: Ivan Blomgren; 615-5096

Get order forms at club meetings from Ivan A Blomgren or download from our web site and turn in the completed order form(s) to Ivan with payment. Orders are submitted on a quarterly basis and can be placed with Ivan up through the last meeting of each quarter. Following the last meeting of each quarter the collected orders are submitted with anticipated delivery the following meeting (first meeting of each quarter).

Full payment for an order will need to be submitted with each order form before it can be processed! Order placement cut off dates for each quarter will be as follows:

Quarter	Months	Order Meeting	Delivery Meeting
1st	Jan - Mar	March	April
2nd	Apr - Jun	June	July
3rd	Jul - Sept	Sept	Oct
4th	Oct - Dec	Dec	Jan

NEWSLETTER

If you have tips, news, "For Sale" or newsletter entry (try to stay 250 words or less, no embedded photos; send photos as separate attachments), Please send it to news@nmwoodturners.org for publication in a future newsletter. **Must be received by the last Saturday of the month to make the most current newsletter.**

NMWT WEB SITE

www.nmwoodturners.org

Please visit our web site. Webmaster Mike Gardner continues to made many additions and improvements that are very useful to club members and the public. If you have not been there lately we now have a slide show on the Home Page and the Gallery is divided into sections with slide shows.

SUGGESTED OTHER WEB SITES

Found a good WEB site? Want to share it with other club members? Questions or suggestions are welcome. Please contact the club Webmaster Mike Gardner at: webmaster@nmwoodturners.org

www.cleanturn.net, www.pennstateind.com,
www.tufftooth.com, www.woodmagazine.com
www.penturners.org, www.woodturnerscatalog.com
www.WoodTurningz.com, www.woodweb.com
www.woodturningvideosplus.com
www.sofasandsectionals.com/wood-turning-resources
www.woodworkersjournal.com

Another resource is:

www.albuquerque.craigslist.org

**New Mexico WoodTurners
c/o Roger Umber
12520 Piru Blvd. SE
Albuquerque, NM 87123**

