

High Desert Turning

www.nmwoodturners.org

Calendar Year Membership: \$25 individual, \$30 family
Contact Bill Baca at billbaca@msn.com or 425-218-4562



OFFICERS, DIRECTORS, & COMMITTEES FOR 2018

| | | | | | |
|------------------------|-----------------------|---------------------|-------------------------|-------------------------|---------------------|
| President: | Hy Tran | 844-5417 | Newsletter: | Roger Umber | 249-0444 |
| Vice President: | Rick Judd | 612-280-8300 | Photographer: | Kathy Knorr | 847-819-2515 |
| Treasurer: | Bill Baca | 425-218-4562 | Raffle: | Dean Cross | 575-644-8945 |
| Secretary: | Steve Gallegos | 991-4406 | Librarian: | Michael Anderson | 575-209-0172 |
| State Fair: | Bill Mantelli | 298-2603 | Equip/Workshops: | Scott Eckstein | 505-270-0516 |
| Webmaster | Mike Gardner | 298-3190 | Green Wood-ABQ: | Greg Hoefler | 228-1606 |
| Logistics: | | | Green Wood SF: | Eric Hester | 816-509-1333 |
| Lead Video: | Derek Roff | 438-1820 | Assistant Video: | | |

NEXT REGULAR NMWT MEETING

Mar 3, 2018
9:00 A.M. to Noon

**Add a little Southwestern Flair to your pieces –
Michael Alguire**

Come join us for a demo as our own Michael Alguire demonstrates the techniques he's developed to enhance your work with a subtle yet effective feature. Michael will show the basics of creating this feature; the key to turning a consistent wall thickness, carving, burning along with a few other enhancements.



FUTURE PROGRAMS/ ACTIVITIES

| | |
|---------|------------------------------------|
| Mar 3 | SOUTHWESTERN FLAIR |
| April 7 | JERRY KERMODE: PROFESSIONAL |
| May 5 | TBA |

PRESIDENTS COVE



Welcome to March 2018! This meeting now marks the first quarter of 2018, and we have a lot of revolutionary activities coming up: First of all, our March 2018 demonstrator is Michael Alguire, from Socorro NM. Michael will show us how some simple decorative techniques to enhance your turnings.

Next, I'd like to remind all of you that our professional demonstrator, Jerry Kermode, is

scheduled for Saturday April 7, 2018. That will be an all-day club demo, from 9am to a bit after 3pm. Attending the demo is free, but the club will set up lunch (\$5 ea). The club will need more volunteers than usual to set up the demo, set up lunch, and cleanup. We'll talk about that during the March 3 meeting. In addition, Jerry Kermode will be teaching 4 hands-on classes from Sunday April 8 to Wed. April 11. These are full-day hands-on workshops. There are 24 spots for students; you will need to pay a fee (\$100 per spot; scholarship assistance through the Red Hollenbach fund). If you have not already signed up for a spot at the February 3 meeting, or by contacting our VP Rick Judd: We close sign-ups for the hands-on workshops by the end of the Saturday March 3 meeting. I highly recommend a workshop with a professional turner—Not only are they very skilled turners, but they are also excellent teachers. In the professional hands-on classes, your student-to-instructor ratio is 6:1, and we frequently have experienced coaches also helping in the class.

Speaking of professionals: I had the opportunity to visit Laura Yeats' "woodturning lab" studio on February 18. See the website at www.woodturninglab.com. Laura's studio is in Santa Fe. She teaches workshops on woodturning, and Michael Mocho also teaches specialty workshops there. Classes are generally held on weekends. The student-to instructor ratio is no more than 4:1. I've signed up for workshops with Michael on March 10 and March 11 (boxes and texturing, respectively).

Besides our professionals and our club mentors, another great resource is the American Association of Woodturners (AAW). The "video tip of the month" from AAW comes from Tom Wirsing in Colorado, who shares with us in a short video (about 5 minutes total) particle metal tools compared to conventional tool steel tools: <https://vimeo.com/249595508>.

Hy Tran, President

March Safety Tip:

Remember before you turn on your grinder to sharpen your tools:

1. Did you inspect your grinding wheel for nicks, dings, and other damage? This is especially important if you are using stone wheels.

2. Is your grinder secure on your workbench?

3. Did you spin the wheel by hand, to make sure nothing is going to touch spinning wheels that are not meant to touch the wheel?

4. Is your tool securely fastened in the jig (if you're using a jig)? Is the grinding platform tightly fastened?

5. Are you wearing your personal protection equipment? No loose clothing, hair, or accessories that might get caught in rotating machinery?

6. Be sure to stand to the side of the grinder ("out of the line of fire") before turning on the grinder, and before turning off the grinder. The grinding wheels see their largest stresses when they are coming up to speed, and when they are decelerating.

2018 MEMBERSHIP DUES

2018 Membership renewals are due!

It is that time of year again to renew your membership for next year!

- A single membership is \$25 for one year, \$45 for two and \$65 for three years
- A family membership is \$30 for one year, \$55 for two and \$80 for three years

Please see treasurer, Bill Baca at the March meeting to renew.

Or, you can mail your renewal check directly to Bill, make checks payable to NMWT and send to: Bill Baca

40 Santa Ana Loop
Placitas, NM 87043

FEBRUARY 2018 PRESENTATION:

Making curved square tubes: Ralph Watts

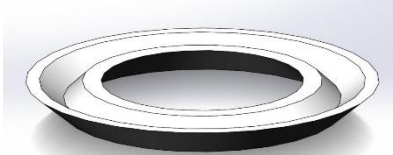
Ralph Watts Has developed both some unique jigs and methods for making "curved square

tubes.” The demonstration shows both the jigs and the methods.

The “square curved tube” eventually looks like this:



To get there, you start with a platter blank, and make a ring that looks like this:

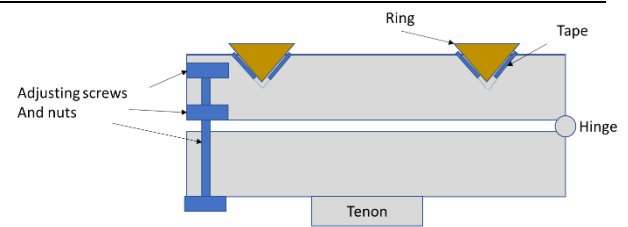


You’ll want 90 degree and 45 degree jigs (Ralph cuts jigs from copper sheet, but you could use other metal or perhaps formica or Masonite), to ensure the groove at the bottom of the ring is 90 degrees, and the angles from the flat blank are 45 degrees.

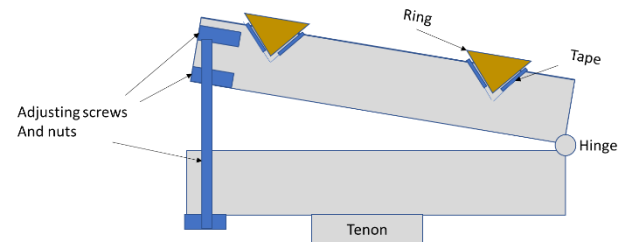
You then attach your ring to an adjustable jig, using double-stick tape, as illustrated below. The jig should be matched to the ring that you make. Again, use the 45 and 90 degree jigs to measure your angles. Ralph likes to paint the jig black to give him some visual contrast when he turns. Be careful with the screws, remember they’ll be spinning around when you turn.



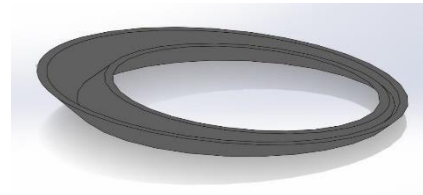
Press hard with the double stick, and give it some time to stick more.



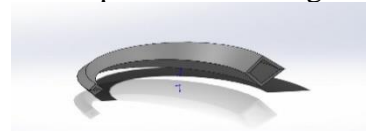
Adjust the angle on the jig as shown. Using a scraper, turn down your ring to make it “off-center”



You should wind up with a piece that looks like this:



Now, cut your offset ring, glue (Ralph uses Titebond II and lots of rubber bands!). You’ll wind up with something like this:



Finish and decorate as desired. Ralph typically uses on polyurethane finishes.

PROFESSIONAL DEMONSTRATOR:**Presenting Jerry Kermode:**

New Mexico Woodturners brings in a professional demonstrator annually. In April 2018, our professional demonstrator is Jerry Kermode (check out his website at www.jerrykermode.com). Not only is Jerry a skilled artist, he is also a gifted teacher. Jerry will do a full day (9am-3pm) demonstration on Saturday April 7, 2018 at our meeting space at Woodworkers' Supply. We will organize lunch (\$5) on-site.

In addition, Jerry will stay in Albuquerque (well, Placitas to be more precise) and teach hands-on workshops Sunday April 8 to Wednesday April 11 (or possibly Thursday April 12, depending on club demand). Each hands-on workshop is limited to 6 participants, and club mentors also assist. This ensures a low student-to-teacher ratio.



Possible hands-on topics include non-violent (efficient) turning of bowls and plates; calabash forms; natural edge bowls; and bowl "stitching," which is one of Jerry's signature specialties. The club charges a \$100 fee for participation in the hands-on workshop (scholarship aid available upon request).

We need to know as soon as possible whether or not to schedule Jerry through Thursday April 12. If you intend to sign up for a hands-on workshop, please either sign the sign-up sheet which will be passed around at the February 3 club meeting, or send a RSVP e-mail to Rick Judd (rickjudd@mac.com) by Sunday February 4, 2018.

AAW SYMPOSIUM IN PORTLAND OR:**Are you planning on going to the AAW Symposium in Portland OR in June 2018?**

If we have ten or more members going (and register them together), the registration fee for the symposium is discounted by \$25. We will pass around a sign-up sheet at the February club meeting. If you are unable to attend the February club meeting, but want to get in on the discounted AAW symposium registration, contact Hy Tran, and Hy will sign your name to the sign-up sheet. Hy needs the list before February 28th.

GROUP PURCHASE FROM WOODTURNERS WONDERS

World of Woods (Albuquerque Exotic Woods) and Woodworkers Supply are great resources and supporters of our group. I buy from them whenever they have the products that I need, and I encourage everyone to do the same. Of course, they can't stock every item that a turner might want, so sometimes we have to turn to the Internet. One vendor that many of us have used is Woodturners Wonders. Derek Roff has agreed to coordinate a group order from them. The advantage to any member who chooses to take part will be free shipping (except on grinders). The advantage to the club and to lucky members is that we will get gift certificates for our raffle amounting to about 10% of our group order.

Woodturners Wonders stocks a variety of interesting products. They have multiple styles and profiles of CBN sharpening wheels, up to 1200 grit. (If you want 80 or 180 grit, you can get those from World of Woods.) They have CBN wheels for the Tormek sharpening device, and similar clones. They have some very good grinders. They have a variety of sanding products, including the Wonder Weave abrasives. Another standout is the Aurora and Super Nova work-lights. These are the best lights for woodturning that I have ever seen, although they are pricey.

Take a look at the Woodturners Wonders website (woodturnerswonders.com) and see if there are any products that interest you. If you want to join in this

group purchase, send me an email with the items and quantities that you want to order. I will submit the order on February 15th, so that is the deadline. If you have any questions about the products, call Ken Rizza, who runs Woodturners Wonders. He told me he will welcome any calls, and is eager to answer questions. 1-678-400-8181.

Derek can be contacted at derek@unm.edu

BEADS OF COURAGE

Beads of Courage: The size of the box, as a minimum, must be 5 inches wide x 6 inches deep. These boxes do not have to be round, they can also square. Of course, you can make them larger, to allow the kiddos to put all their beads in a safe place. Go to www.beadsofcourage.org to see to whom you will be making these boxes. Don't forget to bring your boxes to the meetings, and put them into the instant gallery. Scott Eckstein is our official representative for the local hospitals, give him your box(s) for delivery to the hospitals.

SILENT AUCTION

Silent Auction will be held during each NMWT workshop to raise money for a scholarship fund. The earnings from this fund will be used to reduce member's cost of attending hands-on sessions with professional turner-demonstrators at the discretion of the NMWT Board of Directors.

You may place any item that you think will sell in the auction. Bring only items relating to wood-working or woodturning. There will be auction sheets on a table outside the WWS meeting room. Take a sheet, write the name of the item on the sheet and put your item with the sheet. If you want the item to go for a certain amount, put your name and the minimum bid on the sheet. The Auction will be over at the end of the break. Money will be collected for items sold during the last part of the meeting. All money collected will go into the scholarship fund. Items not sold will be returned to the owner and the owner will remove the items from Woodworkers Supply.

SCHOOLS

Santa Fe Community College
www.sfcc.edu

Santa Fe Community College offers both credit and noncredit courses taught by some of the most prominent artisans in the woodworking field. Classes are offered in the Fall, Spring, and Summer sessions. For more information on SFCC classes, information can also be found at SFCC's web site.

DISCOUNTS & REBATES

WOODWORKER'S SUPPLY

www.woodworker.com

Meeting Day Specials for the Mar 3rd meeting will be announced at the meeting.

CRAFTS SUPPLY

www.woodturnerscatalog.com

Offers a discount to members on large orders. Craft Supply has implemented a new club support program. Visit their web site or phone Kathy Lawrence at 1-800-551-8876

NORTH WOODS, LLC

www.nwfiguredwoods.com

PO Box 808 Forest Grove OR 97116

800-556-3106, 503-357-9953

Free shipping to AAW folks for any order over \$99 checkout use coupon code "FREESHIP99". Your discount will automatically be calculated.*



*Please note that FREESHIP99 does not apply to all products on our site, such as, but not limited to clearance boxes/items, Norfolk Island Pine rounds and wood slabs. For more information or if you have any questions feel free to reply to this email directly.

STORE CLOSING

ALBUQUERQUE EXOTIC WOODS

www.abqexoticwoods.com

Jake Jacobson has a store specializing in exotic woods, located at 4224 Menaul Blvd NE.

Hours: Tuesday through Sunday, 8:30 – 6:00. (Monday by appointment)

Contact: (505) 293-WOOD (9663)

Turning Stock 30% Off

Olive, Indian Rosewood, Desert Ironwood

Day of Meeting 50% Discount with active NMWT Membership Card

Doug Malmstrom

505-907-3015

Custom milling of your lumber or ours.

FOR SALE

Remember, your items for sale will run for one month unless you request an extension.

There is no charge for listing items, and we welcome members to use this space for anything related to woodturning.

You can also run an ad to FIND or TRADE something.

PACKARD WOODWORKS: THE WOODTURNER'S SOURCE

www.packardwoodworks.com/

Specializes in woodturning tools and supplies with a catalog available.

215 S Trade St, Tryon, NC 28782

1-800-683-8876

RUGBY ARCHITECTURAL BUILDING PRODUCTS

1050 18th St. NW (505) 924-2270

NMWT members receive Wholesale Prices. Rugby's have hardwoods, Thermofused Melamine, plywood, veneers, and furniture grade white pine.

STOCK BUILDERS SUPPLY

www.stockbuildingsupply.com

5815 Edith Blvd NE

Albuquerque, NM 87107

(505) 345-2865

Wholesale Prices to NMWT Members

CRANE MOUNTAIN WEAPONS

Contacts: Pat, Marti, or Joe - 271-0797. This business uses exotic woods for gunstocks and sells off-cuts as turning blanks.

NICHROME WIRE FOR CHEAP

Jim Breeden says www.lightningvapes.com has nichrome wire.

INSTANT PHOTO GALLERY

The photographer will only be available until 8:45 A.M. on the day of the meeting to take photos of the instant gallery items.



Bill Kalb - Ambrosia Maple Platter



Bill Killough - English Walnut Yarn Bowl

LUMBER & MILLING SERVICES

Wes Thompson

505-384-2544



Bob Rocheleau - Mimosa Bowl



Dave Montano - Mesquite Bowl with Turquoise



Dave Montano - Walnut Cherry and Maple Segmented Bowl



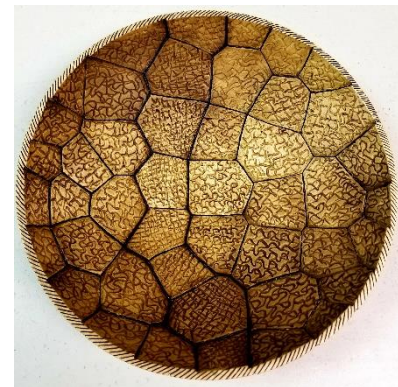
Eddie Bell - African Blackwood Rose Engine Box



Hy Tran - Bristlecone Pine Square Platter



Larry Linford - Maple Basket Illusion with Snakes Platter



Michael Anderson - Sugar Maple Bowl



Ralph Watts - Big Leaf Maple Box



Ron Phillips - Hollowform unknown wood



Ralph Watts - Cottonwood Burl Bowl



Vic Meyers - Burl Urn



Ralph Watts - Round Box with Square Lid

LIBRARY CORNER

A good selection of educational DVD's is available for check out during club meetings.

DVD Rental

Please use and return DVD's in one month if possible and donate \$1.00 for each DVD checked out to help with expenses. If you encounter any problems with DVD's, please notify Michael of those problems.

NMWT WEB SITE

www.nmwoodturners.org

Please visit our web site. Webmaster Mike Gardner continues to made many additions and improvements that are very useful to club members and the public. If you have not been there lately we now have a slide show on the Home Page and the Gallery is divided into sections with slide shows.

MENTORS

Members are always welcome to contact the people on the following list for guidance to better turning ideas, and techniques -- Free to members so give a Mentor a call!

| Name | Phone | Description |
|--------------|----------------|---|
| Bill Zerby | 263-6632 | Basic spindle turning & tool sharpening |
| Irling Smith | 865-9230 | Segmented turning & design |
| John Ellis | 771-1773 | Basic turning, plates, tools & handles |
| Alan Becker | 467-8382 | Intermediate Hollowing |
| Ron Phillips | (505) 553-6139 | Beginning Basic and Intermediate Turning. Also, specialty tools, rests & steadies |
| Ralph Watts | 500-5859 | Advanced turning, carving, coloring, and finishing |
| Ron Bahm | 881-8845 | Pen turning |
| Hy Tran | (505) 797-2041 | Beginner and Novice |
| Mike Heiser | (505) 388-4678 | Beginning Basic and Intermediate Turning. |
| Jim McLain | (575) 517-6535 | Open and closed forms, especially southwest forms, decorative methods, including inlay and coloring |

LOGO WEAR SHIRTS / HATS

Prices for NMWT's Shirts and Hats

| | |
|--------------------------|---------|
| Long Sleeve Denim Shirt | \$27.00 |
| Short Sleeve Denim Shirt | \$25.00 |
| Polo (golf) shirt | \$22.00 |
| Short Sleeve T-Shirt | \$15.00 |
| Caps (baseball) | \$11.00 |

- All items include embroidery
- Add \$2 for XXL and \$3 for XXXL
- Names Embroidered on Shirt \$3.00
- Logo on Customer Supplied Garment \$9.00
- Contact: Ivan Blomgren: 615-5096



Ivan A Blomgren has taken over ordering for club caps, shirts, etc. Due to the lack of volume and associated shipping costs our embroidery shop experiences on small orders it has been decided we need to switch to placing orders on a quarterly basis in hopes of boosting the volume for each order so the per item shipping costs can come down

The way this procedure will work is that members can place orders with me up until the last meeting of each quarter. The collected orders will then be submitted to the embroidery shop and should then be available for distribution on the first quarterly meeting following order placement. Full payment for an order will need to be submitted with each order form before it can be processed! Order placement cut off dates for each quarter will be as follows:

| Quarter | Months | Order Meeting | Delivery Meeting |
|---------|------------|---------------|------------------|
| 1st | Jan - Mar | March | April |
| 2nd | Apr - Jun | June | July |
| 3rd | Jul - Sept | Sept | Oct |
| 4th | Oct - Dec | Dec | Jan |

Order forms can be filled out and downloaded from our web site as well as gotten from Ivan at our meetings.

NEWSLETTER

If you have tips, news, "For Sale" or newsletter entry (try to stay 250 words or less, no embedded photos ; send photos as separate attachments), Please send it to news@nmwoodturners.org for publication in a future newsletter. **Must be received by the last Saturday of the month to make the most current newsletter.**

SUGGESTED OTHER WEB SITES

Found a good WEB site? Want to share it with other club members? Questions or suggestions are welcome. Please contact the club Webmaster Mike Gardner at: webmaster@nmwoodturners.org

www.cleanturn.net, www.pennstateind.com,
www.tufftooth.com, www.woodmagazine.com
www.penturners.org, www.woodturnerscatalog.com
www.WoodTurningz.com, www.woodweb.com
www.woodturningvideosplus.com
www.sofasandsectionals.com/wood-turning-resources
www.woodworkersjournal.com

Another resource is:
www.albuquerque.craigslist.org

**New Mexico WoodTurners
c/o Roger Umber
12520 Piru Blvd. SE
Albuquerque, NM 87123**

