

High Desert Turning

www.nmwoodturners.org

Calendar Year Membership: \$25 individual, \$30 family
Contact Bill Baca at billbaca@msn.com or 425-218-4562



OFFICERS, DIRECTORS, & COMMITTEES FOR 2018

President:	Hy Tran	844-5417	Newsletter:	Roger Umber	249-0444
Vice President:	Rick Judd	612-280-8300	Photographer:	Kathy Knorr	847-819-2515
Treasurer:	Bill Baca	425-218-4562	Raffle:	Dean Cross	575-644-8945
Secretary:	Steve Gallegos	991-4406	Librarian:	Michael Anderson	
State Fair:	Bill Mantelli	298-2603	Equip/Workshops:	Scott Eckstein	505-270-0516
Webmaster	Mike Gardner	298-3190	Green Wood-ABQ:	Greg Hoefler	228-1606
Logistics:			Green Wood SF:	Eric Hester	816-509-1333
Lead Video:	Derek Roff	438-1820	Assistant Video:		

NEXT REGULAR NMWT MEETING

Feb 3, 2018
9:00 A.M. to Noon

Turning a Curved Square Horn – Ralph Watts



Ralph Watts will show the basics of turning a square-round tube useful for some interesting applications. The tubes can be modified to the extent of your imagination. Careful construction will allow piercing,

plus thicker sections can be carved or textured. A blank tube (before it is cut apart) is the basic shape needed to create a horn.



FUTURE PROGRAMS/ ACTIVITIES

Feb 3	RALPH WATTS
Mar 3	TBA
April 7	JERRY KERMODE: PROFESSIONAL
May 5	TBA

PRESIDENTS BEAD



Welcome to the shortest month of the year! Don't forget to renew your membership to New Mexico Woodturners! We're planning a lot of woodturning activities. First, the February 2018 demonstrator is Ralph Watts. I always look forward to Ralph's

work in our instant gallery: Ralph combines unique creativity with exquisite craftsmanship. In his last demonstration for NMWT, Ralph showed us some really great tips for boxes, and I look forward to seeing what he will share in 2018.

Our previously planned March class for spindle turning is on hold while we seek time and space that's convenient for the instructor and the class host (two different people and garages, which makes coordination challenging)—but this class is a very high priority for your club officers, and we look forward to doing this sooner rather than later. Volunteers to help organize the class would certainly help, no experience in woodturning needed (but some experience in organizing would be helpful!)

I'd like to encourage those of you who are not members of the American Association of Woodturners (AAW) to join. Check out the video at <https://vimeo.com/230292775> for a sample AAW resource! You can try a free 60-day "web-only" membership or a \$20 3-month "web-and-print" membership. Go to www.woodturner.org and check the membership links.

Last but not least: We moved our 2018 professional demonstrator visit from May 2018 to April 2018. Read the newsletter for more details, and RSVP your intent to take a hands-on workshop with Jerry Kermode as soon as possible. I was Jerry's video assistant at the 2015 AAW Symposium in Pittsburgh PA. Jerry is not only a very skilled turner, but he is an outstanding teacher. I personally find that a 1-day clinic with a professional is a great way of improving your woodturning!

Hy Tran, President

Brief safety tip:

We spent a lot of time in January talking about workholding and chuck-less holding. Here are a few safety tips when using a scroll chuck. There are many other safety tips, but I'll just highlight four:

1. Make sure you've made a clean surface for your wood that matches the shape of your chuck jaws—including the flat surface on top of your jaws
2. Do bring up your tailstock to support your work as long as you can, even if your primary workholding mechanism is the chuck.
3. After you tighten your chuck on your workpiece, grab the workpiece and give everything a solid shake, to make sure there are no loose parts anywhere.
4. Just in case, in spite of all the checking, something comes flying off the lathe when it is turned on. Stand to the side of the lathe out of the line of fire.

2018 MEMBERSHIP DUES

2018 Membership renewals are due!

It is that time of year again to renew your membership for next year!

- A single membership is \$25 for one year, \$45 for two and \$65 for three years
- A family membership is \$30 for one year, \$55 for two and \$80 for three years

Please see treasurer, Bill Baca at the February meeting to renew.

Or, you can mail your renewal check directly to Bill, make checks payable to NMWT and send to: Bill Baca

40 Santa Ana Loop
Placitas, NM 87043

JANUARY 2018 PRESENTATION:

Holding Wood in a Lathe Without Using a Chuck:

The January 6, 2018 Program was presented by three presenters, Derek Roff, Hy Tran and John Ellis.

SAFETY FIRST

Derek Roff

Between Centers

- Wood Spur

There are two types of wood spurs: two prong and four prong, both use a center point. Derek recommends the two prong spur for most applications. The spur should be set on a diagonal to the wood grain to eliminate splitting the wood. The center point will keep the spur from wandering.

- Ring End

The ring end drive uses a center point and is very safe. In case of a catch, the wood just stops spinning.

- Steb Center

The steb center is very similar to the ring center with the exception of having teeth in place of the ring. It has a spring loaded center point and is also very safe.

Homemade Chucks

- Straka Chuck

Three or four screws hold the piece to the face plate. You need to use a slower lathe speed. The AAW Journal has an article on how to build one. Look for "The Straka Chuck 23.1:50-53.

- Longworth Chuck

You can purchase one or fabricate one yourself. Derek showed custom holding blocks that he made to use with his Longworth Chuck.

- Cole Jaws

Derek showed custom wood pieces that he added to his cole jaws to make them into an adjustable jam chuck.

Hy Tran

- Mounting on a Faceplate

Mount on a flat, face oriented grain, wood surface. Use sheet metal screws with square, torx, Allen or hex head screws. Do not use wood or drywall screws. Woodworkers Supply sells production quality screws. Use the largest size of screw that will fit in the faceplate holes. The length of the screw into the wood should be approximately 6X the diameter of the screw.

John Ellis

- Double stick tape

Do not use paper backed tape, its bond is not strong enough for wood turning. Buy cloth or fabric backed tape. Woodworker's Supply sells Tesa tape and Lowes sells Shur Tape, both of which have adequate holding power for woodturning. Both surfaces must be perfectly flat and clean (dust free). After joining components with tape, keep under clamping pressure for at least ten minutes. Before using MDF or plywood, coat with sanding sealer. Large plates or platters should have a shallow recess cut in them to keep the turning from drifting on the waste block. Denatured alcohol or rubber cement thinner can be used to soften tape adhesive to ease removal.

- Hot Melt Glue

Only use industrial high temperature glue. Make very light cuts with sharp tools, preferably parallel to the lathe axis.

- Rubber Chucky

Rubber Chuckys are primarily used to remove tendons from the bottoms of deep vases and hollow forms. John is willing to loan his Rubber Chucky. Go to www.rubberchucky.com for more information.

PROFESSIONAL DEMONSTRATOR:

Presenting Jerry Kermode:

New Mexico Woodturners brings in a professional demonstrator annually. In April 2018, our professional demonstrator is Jerry Kermode (check out his website at www.jerrykermode.com). Not only is Jerry a skilled artist, he is also a gifted teacher. Jerry will do a full day (9am-3pm) demonstration on Saturday April 7, 2018 at our meeting space at

Woodworkers' Supply. We will organize lunch (\$5) on-site.

In addition, Jerry will stay in Albuquerque (well, Placitas to be more precise) and teach hands-on workshops Sunday April 8 to Wednesday April 11 (or possibly Thursday April 12, depending on club demand). Each hands-on workshop is limited to 6 participants, and club mentors also assist. This ensures a low student-to-teacher ratio.



Possible hands-on topics include non-violent (efficient) turning of bowls and plates; calabash forms; natural edge bowls; and bowl "stitching," which is one of Jerry's signature specialties. The club charges a \$100 fee for participation in the hands-on workshop (scholarship aid available upon request).

We need to know as soon as possible whether or not to schedule Jerry through Thursday April 12. If you intend to sign up for a hands-on workshop, please either sign the sign-up sheet which will be passed around at the February 3 club meeting, or send a RSVP e-mail to Rick Judd (rickjudd@mac.com) by Sunday February 4, 2018.

AAW SYMPOSIUM IN PORTLAND OR:

Are you planning on going to the AAW Symposium in Portland OR in June 2018?

If we have ten or more members going (and register them together), the registration fee for the symposium is discounted by \$25. We will pass around a sign-up sheet at the February club meeting. If you are unable to attend the February club meeting, but want to get in on the discounted

AAW symposium registration, contact Hy Tran, and Hy will sign your name to the sign-up sheet. Hy needs the list before February 28th.

SPECIAL HANDS-ON ACTIVITY

The NMWT Board has undertaken the creation of a program of short, hands-on educational activities, outside of the monthly meeting. We hope to offer a different topic each month. The first activity will be:

Sharpening your tools using the Wolverine system

10am - 12 noon

Saturday, February 24th

Hy Tran will show how he sharpens his lathe tools using the Wolverine sharpening system, and give participants a chance to sharpen one or more of their tools, using Hy's setup. A 7-page "Sharpening Guidelines" handout will be provided. Hy will host the class in his shop, at the address below. Space will be limited to about eight participants. Contact/RSVP to Hy at the email address below, if you wish to take part in this program.

Hy Tran, 10015 Petra Ct NE, Albuquerque, NM 87112

RSVP to: Hy Tran hy.d.tran@gmail.com.

GROUP PURCHASE FROM WOODTURNERS WONDERS

World of Woods (Albuquerque Exotic Woods) and Woodworkers Supply are great resources and supporters of our group. I buy from them whenever they have the products that I need, and I encourage everyone to do the same. Of course, they can't stock every item that a turner might want, so sometimes we have to turn to the Internet. One vendor that many of us have used is Woodturners Wonders. Derek Roff has agreed to coordinate a group order from them. The advantage to any member who chooses to take part will be free shipping (except on grinders). The advantage to the club and to lucky members is that we will get gift certificates for our raffle amounting to about 10% of our group order.

Woodturners Wonders stocks a variety of interesting products. They have multiple styles and profiles of CBN sharpening wheels, up to 1200 grit. (If you want 80 or 180 grit, you can get those from World of Woods.) They have CBN wheels for the Tormek sharpening device, and similar clones. They have some very good grinders. They have a variety of sanding products, including the Wonder Weave abrasives. Another standout is the Aurora and Super Nova work-lights. These are the best lights for woodturning that I have ever seen, although they are pricey.

Take a look at the Woodturners Wonders website (link below), and see if there are any products that interest you. If you want to join in this group purchase, send me an email with the items and quantities that you want to order. I will submit the order on February 15th, so that is the deadline. If you have any questions about the products, call Ken Rizza, who runs Woodturners Wonders. He told me he will welcome any calls, and is eager to answer questions. 1-678-400-8181

<https://woodturnerswonders.com>.

BEADS OF COURAGE

Beads of Courage: The size of the box, as a minimum, must be 5 inches wide x 6 inches deep. These boxes do not have to be round, they can also square. Of course, you can make them larger, to allow the kiddos to put all their beads in a safe place. Go to www.beadsofcourage.org to see to whom you will be making these boxes. Don't forget to bring your boxes to the meetings, and put them into the instant gallery. Scott Eckstein is our official representative for the local hospitals, give him your box(s) for delivery to the hospitals.

SILENT AUCTION

Silent Auction will be held during each NMWT workshop to raise money for a scholarship fund. The earnings from this fund will be used to reduce member's cost of attending hands-on sessions with professional turner-demonstrators at the discretion of the NMWT Board of Directors.

You may place any item that you think will sell in the auction. Bring only items relating to wood-working or

woodturning. There will be auction sheets on a table outside the WWS meeting room. Take a sheet, write the name of the item on the sheet and put your item with the sheet. If you want the item to go for a certain amount, put your name and the minimum bid on the sheet. The Auction will be over at the end of the break. Money will be collected for items sold during the last part of the meeting. All money collected will go into the scholarship fund. Items not sold will be returned to the owner and the owner will remove the items from Woodworkers Supply.

SCHOOLS

Santa Fe Community College **www.sfcc.edu**

Santa Fe Community College offers both credit and noncredit courses taught by some of the most prominent artisans in the woodworking field. Classes are offered in the Fall, Spring, and Summer sessions. For more information on SFCC classes, information can also be found at SFCC's web site.

DISCOUNTS & REBATES

WOODWORKER'S SUPPLY

www.woodworker.com

Meeting Day Specials for the Feb 3rd meeting will be announced at the meeting.

CRAFTS SUPPLY

www.woodturnerscatalog.com

Offers a discount to members on large orders. Craft Supply has implemented a new club support program. Visit their web site or phone Kathy Lawrence at 1-800-551-8876

NORTH WOODS, LLC

www.nwfiguredwoods.com

PO Box 808 Forest Grove OR 97116

[800-556-3106](tel:8005563106), [503-357-9953](tel:5033579953)

Free shipping to AAW folks for any order over \$99 checkout use coupon code "FREESHIP99". Your discount will automatically be calculated.*



*Please note that FREESHIP99 does not apply to all products on our site, such as, but not limited to clearance boxes/items, Norfolk Island Pine rounds and wood slabs. For more information or if you have any questions feel free to reply to this email directly.

ALBUQUERQUE EXOTIC WOODS

www.abqexoticwoods.com

Jake Jacobson has a store specializing in exotic woods, located at 4224 Menaul Blvd NE.

Hours: Tuesday through Sunday, 8:30 – 6:00.
(Monday by appointment)
Contact: (505) 293-WOOD (9663)

PACKARD WOODWORKS: THE WOODTURNER'S SOURCE

www.packardwoodworks.com/

Specializes in woodturning tools and supplies with a catalog available.

215 S Trade St, Tryon, NC 28782
1-800-683-8876

RUGBY ARCHITECTURAL BUILDING PRODUCTS

1050 18th St. NW (505) 924-2270

NMWT members receive Wholesale Prices. Rugby's have hardwoods, Thermofused Melamine, plywood, veneers, and furniture grade white pine.

STOCK BUILDERS SUPPLY

www.stockbuildingsupply.com

5815 Edith Blvd NE

Albuquerque, NM 87107

(505) 345-2865

Wholesale Prices to NMWT Members

CRANE MOUNTAIN WEAPONS

Contacts: Pat, Marti, or Joe - 271-0797. This business uses exotic woods for gunstocks and sells off-cuts as turning blanks.

NICHROME WIRE FOR CHEAP

Jim Breeden says www.lightningvapes.com has nichrome wire.

LUMBER & MILLING SERVICES

Wes Thompson 505-384-2544

Doug Malmstrom 505-907-3015

Custom milling of your lumber or ours.

FOR SALE

Remember, your items for sale will run for one month unless you request an extension.

There is no charge for listing items, and we welcome members to use this space for anything related to woodturning.

For Sale: 5 gallons of Pentacryl \$200.00 prefer pickup in Socorro but could arrange delivery Call Jim McLain at 575-517-6535.

(Compare to \$230 + Freight online)



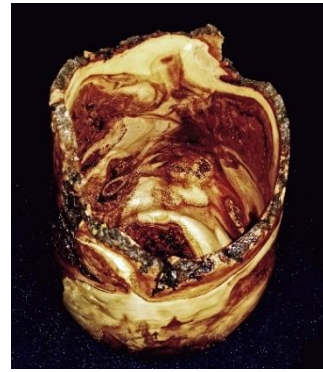
You can also run an ad to FIND or TRADE something.

INSTANT PHOTO GALLERY

The photographer will only be available until 8:45 A.M. on the day of the meeting to take photos of the instant gallery items.



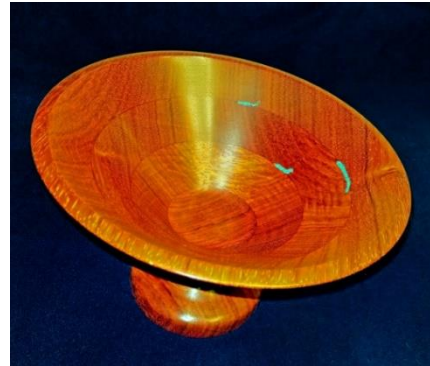
Bill Killough - Hollow-form



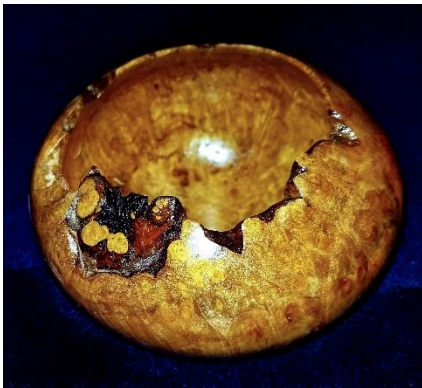
Jose Sena – Aspen Vase



David Montano – Alder Platter with Black Veneer



Layered Footed



Drake Ward - Burl Bowl



Michael Alguire – Platter Stars-of-Acoma



Hy Tran – Apricot Natural-edge Bowl



Michael Alguire - Wheel-of-Delicacy



Michael Anderson – Walnut Goblet



Ralph Watts – Hosta Vase Oak



Michael Anderson – Myrtle Map Bowl



Victor Alvarado – Cherry Platter



Michael Sedlak – Cottonwood Bowl - 1st-turning

LIBRARY CORNER

A good selection of educational DVD's is available for check out during club meetings.

DVD Rental

Please use and return DVD's in one month if possible and donate \$1.00 for each DVD checked out to help with expenses. If you encounter any problems with DVD's, please notify Michael of those problems.

NMWT WEB SITE

www.nmwoodturners.org

Please visit our web site. Webmaster Mike Gardner continues to made many additions and improvements that are very useful to club members and the public. If you have not been there lately we now have a slide show on the Home Page and the Gallery is divided into sections with slide shows.

MENTORS

Members are always welcome to contact the people on the following list for guidance to better turning ideas, and techniques -- Free to members so give a Mentor a call!

Name	Phone	Description
Bill Zerby	263-6632	Basic spindle turning & tool sharpening
Irling Smith	865-9230	Segmented turning & design
John Ellis	771-1773	Basic turning, plates, tools & handles
Alan Becker	467-8382	Intermediate Hollowing
Ron Phillips	(505) 553-6139	Beginning Basic and Intermediate Turning. Also, specialty tools, rests & steadies
Ralph Watts	500-5859	Advanced turning, carving, coloring, and finishing
Ron Bahm	881-8845	Pen turning
Hy Tran	(505) 797-2041	Beginner and Novice
Mike Heiser	(505) 388-4678	Beginning Basic and Intermediate Turning.
Jim McLain	(575) 517-6535	Open and closed forms, especially southwest forms, decorative methods, including inlay and coloring

LOGO WEAR SHIRTS / HATS

Prices for NMWT's Shirts and Hats

Long Sleeve Denim Shirt	\$27.00
Short Sleeve Denim Shirt	\$25.00
Polo (golf) shirt	\$22.00
Short Sleeve T-Shirt	\$15.00
Caps (baseball)	\$11.00

- All items include embroidery
- Add \$2 for XXL and \$3 for XXXL
- Names Embroidered on Shirt \$3.00
- Logo on Customer Supplied Garment \$9.00
- Contact: Ivan Blomgren: 615-5096



Ivan A Blomgren has taken over ordering for club caps, shirts, etc. Due to the lack of volume and associated shipping costs our embroidery shop experiences on small orders it has been decided we need to switch to placing orders on a quarterly basis in hopes of boosting the volume for each order so the per item shipping costs can come down

The way this procedure will work is that members can place orders with me up until the last meeting of each quarter. The collected orders will then be submitted to the embroidery shop and should then be available for distribution on the first quarterly meeting following order placement. Full payment for an order will need to be submitted with each order form before it can be processed! Order placement cut off dates for each quarter will be as follows:

Quarter	Months	Order Meeting	Delivery Meeting
1st	Jan - Mar	March	April
2nd	Apr - Jun	June	July
3rd	Jul - Sept	Sept	Oct
4th	Oct - Dec	Dec	Jan

Order forms can be filled out and downloaded from our web site as well as gotten from Ivan at our meetings.

NEWSLETTER

If you have tips, news, "For Sale" or newsletter entry (try to stay 250 words or less, no embedded photos ; send photos as separate attachments), Please send it to news@nmwoodturners.org for publication in a future newsletter. **Must be received by the last Saturday of the month to make the most current newsletter.**

SUGGESTED OTHER WEB SITES

Found a good WEB site? Want to share it with other club members? Questions or suggestions are welcome. Please contact the club Webmaster Mike Gardner at: webmaster@nmwoodturners.org

www.cleanturn.net, www.pennstateind.com,
www.tufftooth.com, www.woodmagazine.com
www.penturners.org, www.woodturnerscatalog.com
www.WoodTurningz.com, www.woodweb.com
www.woodturningvideosplus.com
www.sofasandsectionals.com/wood-turning-resources
www.woodworkersjournal.com

Another resource is:
www.albuquerque.craigslist.org

**New Mexico WoodTurners
c/o Roger Umber
12520 Piru Blvd. SE
Albuquerque, NM 87123**

