



High Desert Turning

You're gonna love the way you turn.

We guarantee it!



Membership details found within www.nmwoodturners.org

NMWT's Upcoming Monthly Meeting

Club Meetings are normally held 10:00 am to 12:30 pm on the first Saturday of the month



Jeff Hornung, Owner and Artist
The Walnut Log Studio and Supply

Who: Jeff Hornung

Topic: Finishing the Finish

When: Mar 5, 2022 10:00 am MT

(zoom session opens at 9:30 am).

Website: <https://www.thewalnutlog.com/>

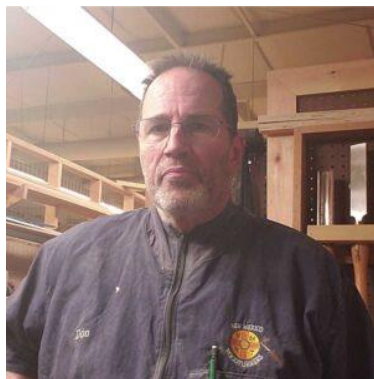
Please see next page for more information regarding
guest speaker

The President's Turn

Happy March to all of you.

First, I am happy to tell you that we are looking at in person meetings again starting in April. We will be keeping an eye on the infection rates for Covid and may adjust from what we see in infection rates. Our April meeting will be a hybrid meeting in that it will be in person at North Domingo Bacca Cultural Center (you do remember that place, don't you)? If you want to be in person, we are excited to see you. We are asking everyone to wear a mask even though the State and City do not require them. This is an extra level of precaution for those who have underlying health conditions that may be in attendance. We want all of you to be safe and feel safe in attending.

Second, I remember the line from Apollo 13 where Gene Krantz said, "Failure is not an option!" While failure may not be an option, it is inevitable, especially in woodturning as so many of know all too well. I have had many failures in my turning in the last few weeks and for those attending the meeting on March 5th, you will get to see some of them firsthand. When I am teaching woodturning, I ask the question when things do not go the way they are planned or what we intend.



Don Roden, NMWT President

The question is "what did you learn?" Failures are often time better teacher than several successes. Failures give you the opportunity to look at what happened and how to do it differently next time. I put it out at the February Meeting to have our Instant Gallery be about failures and what did you learn. If we can share what we have learned by passing that on to others, it may cut their learning curve down a little bit. Or, it may encourage them to take a chance and step outside their comfort zone and try something new.

Happy and safe turning to all of you,

Don Roden
President

NMWT's Upcoming Monthly Meeting

Guest Speaker: Jeff Hornung

Finishing The Finish!

Lacquer and Oil and Wax, oh my!

Food safe? Top coat? Home brew? We cover these questions and so much more! This is my most requested demo, both live and virtual, because I cover not only products that I sell but products that we all use, know and love/hate. My goal is to provide you with as much information about as many products as possible. There are a wide range of finishes available and it gets really confusing at times to figure out what is the best finish for your turnings.

I'll be live, virtually and switching between a PowerPoint slide show and actual product demonstration in real time. You'll be able to interact and ask questions too. I'll even cover dyes, stains and paints!!

Future Programs/Activities

March	Jeff Hornung	Finishing the Finish
April	Larry Lindford & Tom Durgin	Indexing & Carving
May	TBD	TBD
June	TBD	TBD

‡ DEMOS ARE SUBJECT TO CHANGE

Highlights from Last Month's Meeting

Bowl-from-a-Board



What a great demo put on by Kay & Bert Grant along with Hy Tran in February! A whole lot of research and practice behind the scenes went into making this demo as good as it was. We so appreciate you three and your efforts. It was great to see how they succeeded, where things didn't work out so well and all the very practical tips on how to be successful.

Do you have nice wood, but it's too skinny to make a bowl? Now you have a good foundation on how to get started after seeing the basics for making a bowl-from-a-board. Unlike more complex segmented turnings, you don't need a lot of extra jigs and tools—and no math or trigonometry is required. (You do need to remember that the inside of the bowl needs to be smaller than the outside of the bowl). The photo here is from a bowl-from-a-board that Hy Tran made over the Christmas holidays, about 12" diameter, from maple and walnut boards.



Green Wood Available

The Green Wood Committee is always grabbing green wood in the community and keeping it out of the landfill. There are endless projects that can be done with greenwood. For more info on green wood tips and techniques, see the AAW Green Wood booklet (requires sign-in).



Catalpa (Catalpa bignonioides)



Cottonwood



Mulberry

Beads of Courage – NMWT's 2022 Challenge

The Challenge and Goal: For each club member to take the time and heart to make at least one Beads of Courage Box during 2022.

NMWT currently produces approximately 8 bowls a year and it would be great to see that number increase exponentially.

For more information regarding the program, where to purchase beads, or where to deliver your finely crafted bowl, please Scott Eckstein 505-270-0516 or our NMWT Beads of Courage Chair.

What is Beads of Courage?

Beads of Courage is the NMWT's Community Service Project. Beads of Courage, Inc. is a 501 (c) (3) tax exempt organization working in partnership with the American Association of Woodturners (AAW).

This is Local!

Our Beads of Courage Bowls are taken directly to UNMH Children's Cancer Facility here in Albuquerque for local patients. However, some bowls can also be sent to a National collection point in Tucson, Arizona.

UNMH Children's Cancer Facility has been treating nearly one hundred seriously ill cancer youngsters each year. For each medical treatment a child receives, he or she gets a bead which they can then keep in their bowl, hence Beads of Courage Bowls. The children do receive a bag to put their beads in, but a Beads of Courage Bowl is far more special and reflective of the hard work to beat cancer!



Elias is featured on BeadsofCourage.org with his prized wood turned box



Member Estate/Shop/Tool Sales Notice

About 5 or 6 of us have organized tool sales for shop tool reductions or helping spouses sell the tools that a deceased member had acquired. *We have done this for about a dozen situations and have noticed a definite decrease in interest and purchases.* We price items at 50% of retail if tool is in good shape and less if tool shows a lot of use. **This notice is to inform, ESPECIALLY NEW WOODTURNERS, that you are missing out on some real bargains on power tools, hand tools and wood.** Most wood workers value their tools and take good care of them and, as such, are of good value to pass on to the buyer. These sales are also often a great source of high-quality turning blanks. *We give sellers a free service AND give them real hope that our members will clean their space of tools.* These sales are especially a real good opportunity for NEW WOODTURNERS to fill out their shop and we HIGHLY encourage all members to pay close attention to these sales. Undoubtedly more will happen.



Sincerely yours,
"The estate sales team"



Keep your eyes and ears open for upcoming tool and wood sales.

Silent Auction

Your contributions go to benefit the Red Hollenbach Scholarship Fund which is used to reduce the cost for members to attend professional demonstrator's hands-on sessions.

Please, while staying home, find nifty items or pieces of timber that can be auctioned at our next meeting to support the Scholarship Fund.

Ideas include rough turned bowls, gouges gathering dust, seasoned blanks or turning accessories.



Jerry Kermode coaches an attendee at a hands-on class

Thankful Shout Out



A very thankful shout out to Scott Kershaw for providing many top notch newsletters for NMWT! Because of you, NMWT has been made better! NMWT is grateful for your service and dedication.

NMWT's on Social Media



The New Mexico Woodturners are on Facebook and YouTube

Various members of the NMWTs moderate the social media accounts and promote the craft and our club actively on these outlets.



Facebook is just one way to share your work. However, it's also a great platform to ask questions, request constructive criticism and rub shoulders with other turners.

A number of the Facebook group members are not NMWT members and that's okay! However, by our NMWT membership being active on social media we can also share the benefits of club membership, promote club activities and foster relationships with turners around the globe.

Please join the Facebook group, subscribe to the YouTube channel and watch us grow turning!

AAW Offerings (www.woodturner.org)

Welcome to the world of woodturning!

New turners — this site is for you.

The world of woodturning is large, complex, and continually growing. In order to enter that world safely and confidently, you need to learn a few basics: How to sharpen your tools, how use the different tools properly, and above all how to work safely. This site is designed to point you to helpful articles and videos by some of the world's most talented and successful woodturners.

The menu buttons will take you to important areas of woodturning. Click on any button for a rundown of resources chosen with beginning turners in mind.

You may also want to go read the Learning Outcomes curriculum. It details the knowledge, skills, and attitudes needed to become a successful turner.

Also, like the larger world of woodturning, this site is continually growing, with new articles and videos added regularly. Come back often to see what's new.



**Mark your calendar for the next AAW Presets:
Saturday, March 5, 2022 @ 4 pm EASTERN**

WIT Presents: Tania Radda \$10 member/\$15 not yet member

Registration coming soon. Please visit:

<https://www.woodturner.org/Woodturner/Events/AAW%20Virtual%20Events/Woodturner/Virtual-Events/Master-Series-Landing-Page.aspx>

Women Turners

We have a local group of women in turning and invite you to join us!! What we offer is access to the AAW site and wonderful monthly magazine, and a group of engaged and enthused turners!



Women in Turning

Women in Turning (WiT) -- The American Association of Woodturners (AAW) strives to deliver the publications and services that our members need to grow, connect, explore, and thrive in the areas of woodturning that are important to them.

Are you on Facebook? Join the private group page Women in Turning [Women in Turning | Facebook](#) to get a feeling of the ideas, support, and work of 1,700-member group! AAW membership is not required.

ALSO – join the AAW with a guest membership so you can see what else WiT and AAW [Guest Membership \(woodturner.org\)](#)

By signing up for a complimentary Guest membership, you can have access to AAW resources for a full 60 days. You will be able to explore what the AAW has to offer, kick our tires, and hopefully decide to become a full-fledged, paid AAW member to benefit from everything the AAW has to offer.

Contact us with any questions!! Call Kay or Sally or Kathy

WiT Local Contacts	
Kay Grant	661-599-1832
Kathy Knorr	874-819-2515
Sally Breeden	505-352-0159

Meeting Notice

March 20, 2022 @ 2pm
6102 Jefferson Blvd NE, Ste D, ABQ

On March 20, 2022 there will be an organizational meeting of Women in Turning (WiT) NM. The purpose of this group is to assist those women who want to learn to turn by providing lessons and encouragement from other women; for those who already turn, give them a chance to learn other skills and have fellowship with other women in the area and to generally ask questions of and get to know other women in NM.

If you are interested in attending we ask that you bring ideas of what you want this group to be and/or questions in general. If you would like to learn to turn, please come.

The meeting will be held at Dovetail Community Workshop located at 6102 Jefferson Blvd NE, suite D, ABQ at 2 PM. Looking forward to seeing you.

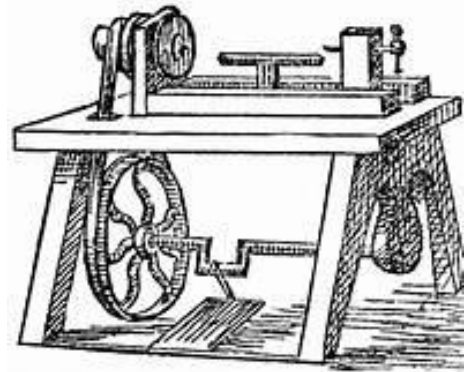


Source: WiT webpage

From the Desk of Kay Grant

As I was in my shop working, more like trying to decide what to do first, I thought about new members and those who would like to learn wood turning.

To the new members first, congratulations, you joined a good group of women and men who are interested in helping you along your journey of wood turning. It is a lifelong journey that will take you in many directions and, maybe, many places. There is an interesting mixture of abilities, interests and styles here in this club. You will see many of them in the newsletter gallery and hear many speak of new things learned and old skills dusted off.



Source: ClipArt ETC

We have those who have formally volunteered to be a mentor to help you and answer questions. And believe me there is more knowledge in this group than you can ever exhaust with questions. There are also those who have not formally volunteered to be mentors but are more than willing to share something they have learned or answer a question. Take advantage of these people. You may not be new to turning but you are new to the depth of knowledge here.

Next, to the people who view the New Mexico Wood Turners website, NMWoodturners.org. Glad you found us. Even though at this particular time we are not holding in-person meetings, we are still very active via Zoom. If you see something that tickles your fancy and would like to either join a meeting or explore something further, email either President@nmwoodturners.org or info@nmwoodturners.org and get your answer.

One of the problems those interested in wood turning address is the lack of knowledge in where to start. Here, with this group, is the answer to that problem. A second problem is sometimes the lack of equipment such as the all-important lathe. Well, there are multiple answers to that. There are estate sales where people are leaving the hobby for a number of reasons. These are good places to buy good used equipment. Second, we and our partners hold classes periodically. One of our partners who sells wood and sometimes has classes is Albuquerque Exotic Woods. Watch their website for information on classes. www.albuquerqueexoticwoods.com.

Another of our partners is Dovetail Community Workshop. This is a woodworking wood shop involved with all aspects of woodworking. This is a membership organization if you want space to do woodworking on a more frequent basis. However, there are wood turning classes which teach the basics to more advanced activities. These are done as a one charge, no membership required, class.

The classes are taught by members of this wood turning club. The advantage to the workshop is that there are multiple lathes available for use to members 7 days a week. This business solves the problem of wanting to learn wood turning but not having a space for the equipment. That website is: www.dovetailworkshop.com.

Let me close by saying that wood turning is a beautiful art. You are only limited in what you create by your imagination. While you may say I don't have the imagination needed, you must understand that your imagination will grow as you gain more skills. There are no limitations in how much you grow and experiment with this art form. And lastly, WELCOME to the addiction that is wood turning!

Tips for Mounting Wood Chuck: the Sequel (with a Tenon)

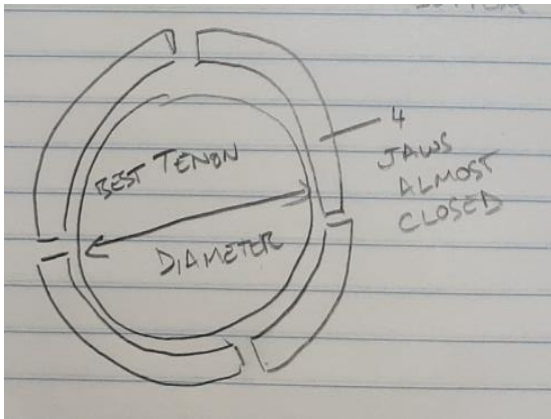
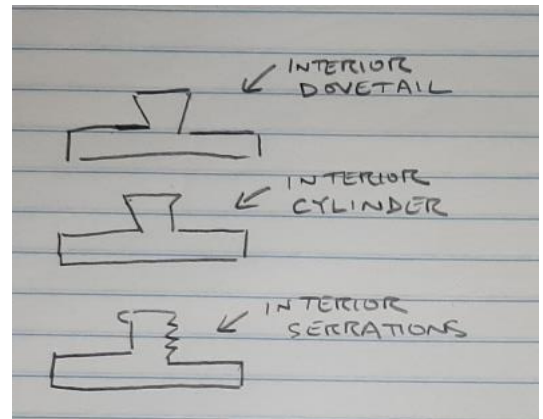
By Hy Tran

In general, mounting wood in a scroll chuck (four jaw chuck) by squeezing on a tenon (also called spigot) in the wood will be stronger than mounting by expanding the chuck jaws in a recess (also called mortise).

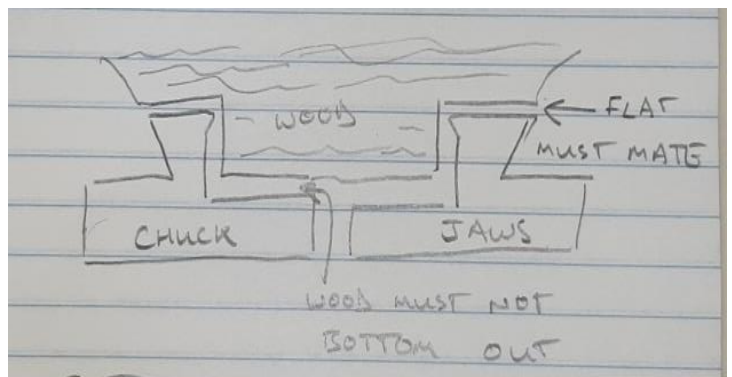
In this sequel, we discuss mounting with a tenon. If you're new to mounting wood on a chuck, I recommend you practice your technique using spindle stock (2x2x6 (inches) is a good practice size). I prefer using a tenon most of the time, and when working with green wood, I almost always use a tenon for the bottom of the bowl or platter.

The key to a strong hold for your wood is to have solid contact between your wood and your chuck jaws:

(1) Inspect your jaws. The interior profile of your jaws may be (a) dovetailed; (b) cylindrical but with a small protrusion, which may look like a dovetail; (c) serrated. For case (a), you will want your tenon to be shaped like the dovetail. For cases (b) and (c), you will want to have a tenon that's cylindrical in shape.



(2) The strongest grip will be when your chuck is almost closed. Size your tenon diameter to be a bit larger than the inside diameter of the chuck jaws when the chuck is closed.



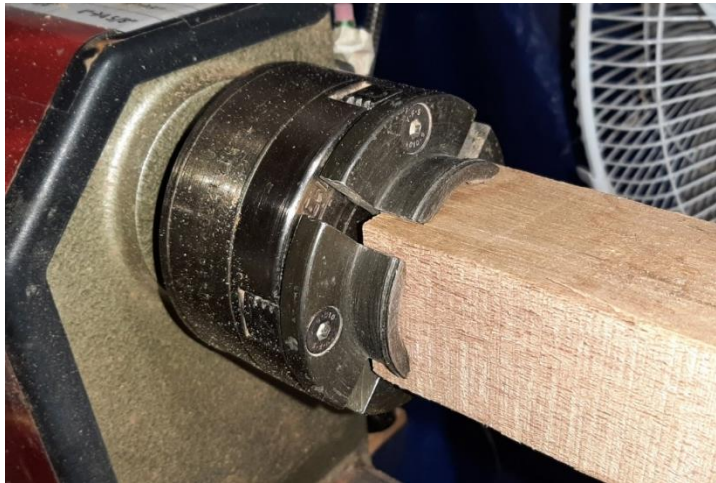
(3) The flat surface at the top of the chuck jaw **must** mate with the flat surface next to the tenon! And don't make your tenon so deep that your wood bottoms out!

See next page for working with Spindle-Oriented Blanks

Only if Working with Spindle-Oriented Blanks

By Hy Tran

You may temporarily mount square stock in a chuck without turning a tenon, as shown here:



This is not a strong mounting, and should only be used to prepare a proper tenon on the opposite side of the spindle blank! The wood is held against the chuck jaws at only eight points, so you are at risk for creating flying spindle blanks! I use this method to hold the wood so that I can turn a tenon on the right side of the photo.

Lastly: Don't remove your workpiece from the chuck until you've turned it (and possibly sanded) to your desired shape. It will not remount in exactly the same orientation.

In Memorial – Raymond Berry

Please visit the online guestbook for Ray at www.FrenchFunerals.com



Raymond Berry

Born on November 20, 1936, in Dallas, TX, to William and Frankye Berry, he is survived by wife Carroll, daughters Denise (husband Curtis) Crawford, Nancy (husband Paul) Gordy, and Bonne Cleveland; grandchildren Shawna (husband David) Van Zuiden, Katy (husband Heath) Francis, James (wife Samantha) Crawford, and Connor Cleveland; great-grandchildren Nina Van Zuiden; Brant Van Zuiden; and Rynlee Francis. He was preceded in death by his parents and his brothers Bill Berry and Donald Berry.

Ray grew up in Odessa, TX. Ray served in the US Air Force from 1955 to 1959 in the UK and at Biggs AFB in El Paso, TX. He became an air traffic controller for the FAA for 25 years, going on to become a data control systems specialist for another 25 years.

Ray was an avid hobbyist, from photography, bowling, skeet shooting and reloading in his earlier years to oil painting and wood turning handmade treasures and toys in later years. He held a true passion for the Boy Scouts of America and was a Silver Beaver and Order of the Arrow recipient and lifetime member of the organization. He was a lifelong learner and was happy to help others reach their goals as well.

Visitation was held on Saturday, January 15, 2022, at French Lomas.

2022 Elected Officers, Directors & Committee Chairs

President:	Don Roden	763-234-5780	Newsletter:	Traci Durgin	news@nmwoodturners.org
Vice President:	Tom Durgin	505-688-1370	Photographer:	Bert & Kay Grant	661-599-0116
Treasurer:	Woody Stone	828-808-7876	Raffle Coordinator:	Dean Cross	575-644-8945
Secretary:	Sally Breeden	505-352-0159	Librarian:	Michael Andersen	575-209-0172
State Fair:	Bill Mantelli	505-298-2603	Equip/Workshops:	Scott Eckstein	505-270-0516
Membership:	Tom McLarty	505-298-3790	Green Wood-ABQ:	HELP NEEDED	
Webmaster:	Dave Stein	505-266-0356	Green Wood Help:	HELP NEEDED	
Lead Video:	Derek Roff	505-438-1820	Special Workshops:	John Ellis	505-463-7750
Email Administrator:	Hy Tran	505-459-8132	Logistics:		
Member-at-Large:	Ron Bahm	505-881-8845	Past President:	Rick Judd	612-280-8300

Need a Mentor?

Free to NMWT members: give a Mentor a call!

Name	Phone	Description
Bill Zerby Rio Rancho - NM 528 & Southern	505-263-6632	Basic spindle turning & tool sharpening
Don Roden Albuquerque – Dovetail Workshop	763-234-5780	Basics of spindles, bowls and the skew chisel
Hy Tran Albuquerque - Paseo & Ventura	505-459-8132	Beginner and novice woodturning
John Ellis Placitas	505-463-7750	Basic turning, plates, tools & handles
Larry Linford Albuquerque	505-870-1601	Basket illusion turning and embellishment
Ralph Watts	505-500-5859	Advanced turning, carving, coloring and finishing
Rick Judd East Mountain	615-280-8300	Hollow forms, bowls, lidded boxes, burls, natural edge
Ron Bahm Albuquerque - NE Heights	505-881-8845	Pen turning and segmented work
Ron Phillips Rio Rancho - Rivers Edge II	505-553-6139	Beginning, basic and intermediate turning. Also, specialty tools, rests & steadies

Members are always welcome to contact the people on the mentor list for guidance to better turning ideas and techniques

*****SEEKING MENTORS*****

Photo Gallery



Jim McLain - Mountain



Jim McLain - Alligator Juniper Chaco



Kay Grant - Platter



Bert Grant - Lidded box



Bert Grant - Platter



Joe Channey - Grecian Urn



Brad Carvey - Sugar Dish



Joe Channey - Large Norfolk Island Pine Urn with Thorns



Van Warren - Segmented Bowl (2)



Brad Carvey - Bowl

Turnings shared via Kay Grant - Send gallery photos to gallery@nmwoodturners.org

Photo Gallery



Joe Channey – NM Bowl
w/Turquoise Concho



Greg Fryeweaver



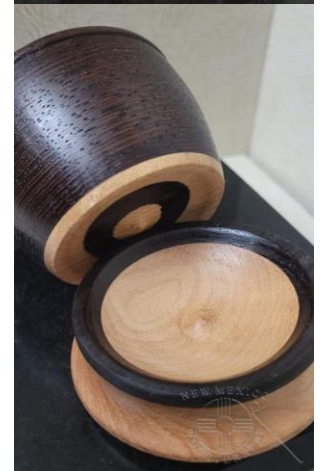
Greg Fryeweaver



Daniel Cross



Greg Fryeweaver



Greg Fryeweaver



Greg Fryeweaver



Greg Fryeweaver



Bert Grant – Cashew
Bowl



Greg Fryeweaver

Turnings shared via Kay Grant – Send gallery photos to gallery@nmwoodturners.org

Photo Gallery



Bert Grant – Core Bowl



Bert Grant – Here's Looking at You



Bert Grant - Beads of Courage Bowl, Interior, and Lid



Hy Tran - Pens



Hy Tran – Plank Bowl



Robert L. Rocheleau



David Swain

Turnings shared via Kay Grant – Send gallery photos to gallery@nmwoodturners.org

Photo Gallery



Stephen Johnson – Inlay Box



Larry Evans



Larry Evans



Turnings shared via Kay Grant – Send gallery photos to gallery@nmwoodturners.org

Photo Gallery



Woody Stone – Mulberry Sunlight



Woody Stone – Mulberry



Woody Stone – Maple Hollow Form



Woody Stone – Mulberry No Sun



Woody Stone – Mystery Wood Bowl



David Swain – Coffe Wood



Greg Fryeweaver



Greg Fryeweaver

Turnings shared via Kay Grant – Send gallery photos to gallery@nmwoodturners.org

Photo Gallery



David Swain – Chinese Pistache



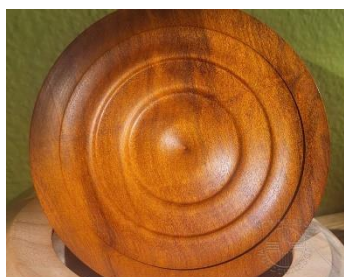
Greg Fryeweaver



Greg Fryeweaver



Greg Fryeweaver



Greg Fryeweaver



Tom Durgin – Mesquite Box



Tom Durgin – Walnut box



Greg Fryeweaver

Turnings shared via Kay Grant – Send gallery photos to gallery@nmwoodturners.org

Photo Gallery



Hy Tran – Longworth Chuck



Tom Durgin – Zebrawood and Maple

*These photos can be found in the Galleries section on NMWT's webpage

Marketplace



Ryobi 10" Miter Saw with 2 extra carbide blades,
little used. On a heavy steel stand on wheels. \$125
Call Ron Bahm 505-881-8845

See Next Page for More Ads

Marketplace



Mobile Base

Now 18"x24", but can easily be modified



8" Chinese Grinder

1 HP, 3450 Rpm

To A Good Home

Yours for any reasonable donation to NMWT

("Reasonable" = according to your needs and means.)
Call: Dave, 505-266-0356



Delta Dust Collector

650 CFM, 1 micron dust filter

Anchorseal (green wood sealer) - \$20/gal:

For sale to NMWT club members are one-gallon jugs of Anchorseal. These are available for pick up at Albuquerque Exotic Woods (AEW). Make check payable to NMWT and mail to club address OR drop check off at AEW.



Wood for Sale

Many species. Most 4/4, and some 8/4, and also a large quantity of boards 1/4"-3/8" thick; surfaced both sides. Jim will take offers at 20% to 50% of the best price you can find on the internet, depending on species. Please call Jim McLain at 575-517-6535 if you are interested in making a trip to Socorro for some great wood.

Species include: Blood wood, Spaulted maple, Spaulted hackberry, Brazilian walnut, Curly maple, Pomelle bubinga, Bubinga, Hondoras rosewood, Tulipwood, Black mesquite, Wenge, Gabon ebony, Cocobolo, Tea tree, Bocote, Arariba, Moradillo, Lacewood, Yellow heart, Padauk, King wood, Canary wood, Mahogany. See some of the wood pictured here.



Hollowing systems for sale

Contact Bob Rocheleau at (505)235-9002.
Vicmarc hollowing system for \$200,
pictured here:



See Next Page for More Ads

Marketplace

Lathe and accessories, grinder & Oneway jig

Paul Finley (520)604-1657, cosmicinc7@gmail.com, has a Jet variable speed mini lathe JML-1041VS 1/2 H with 26" bed extension. Comes with one 4-Jaw chuck and 2 tool rests, apprentice mini 4-Jaw chuck 7 piece set, 4 faceplates, 2 live centers, 2 dead centers, 1 stand with extensions, wheels and hardware, pictured here. Located in Santa Fe. Asking \$450 or best offer



Paul also has a 1/2 HP Rikon slow speed grinder, along with Oneway jig and varigrind, pictured here. Asking \$125.

Rough-turned bowls for sale

David Hallman has hundreds of rough-turned bowls, in various woods, including cherry, china berry, walnut, sycamore, mimosa, sassafras, and mesquite. Some are natural edge (with and without bark), others are cut edge. Sizes range from four inches up to fifteen inches wide, shallow up to six inches tall. Asking one dollar up to twenty five dollars for the larger sizes. Volume discounts. Located in Silver City.

Contact David at (575)654-0299 or mesquitedave@gmail.com



Bridge for Sale



This is a sample marketplace posting.

We welcome members to use this space for anything related to woodturning.

There is no charge for listing an item. Ads will run for about one month.

To request a listing, send item and contact info to sale@nmwoodturners.org

Your ad will be reviewed and posted as quickly as possible.

*** You must be an NMWT member to post ads ***

See Next Page for More Ads

Membership Renewal – Now Online!

Membership Dues: Membership dues renewals are due on or before the last day of the month in which the member's current membership term expires. Members who do not renew within thirty (30) days after their membership expiration date will no longer have access to member privileges and will no longer receive the monthly newsletter. Annual dues are as follows:

- **One year: \$25 for an individual; \$30 for a family**
- **Two Years: \$45 for an individual; \$55 for a family**
- **Three Years: \$65 for an individual; \$80 for a family**
- **Lifetime: \$300 for an individual; \$350 for a family**

Additional Fees:

- An individual member who subsequently adds family members will pay the difference between the individual dues and the family dues rate for the remainder of that membership year (i.e., a one-year individual member adding family members would pay an additional \$5.00 dues for the remainder of the membership year).
- A member requiring a mailed copy of the monthly newsletter will pay an additional \$10 per year to cover cost of mailing.

[Web-Based Credit Card Dues Payment Now Available](#)

Renew Online

We are very pleased to announce that you can now pay your membership dues with a credit card on the NMWT website at <https://www.nmwoodturners.org/>. To access online dues payment, simply go to the new "Membership" tab near the top of the homepage and select "Pay Online" from the drop-down menu. This will take you to a secure website managed by Converge, our credit card service provider. There you will find a series of "Buy Buttons" that are clearly labeled with each membership dues option (i.e. 1 Yr Individual Membership \$25, 2 Yr Family Membership \$55, etc.) Simply select the dues option that you want and then hit the "Checkout" button.

You will need to fill in all of the contact information on the payment processing page so that the Treasurer can confirm that our membership records are up to date and also so that he can send your new membership card by regular mail. Also, due to some reporting limitations of the Converge website, you will need to once again select the dues option you want from the drop-down menu labeled "Items Purchased". Fill in your credit card information and hit the "Submit Payment" button to complete the transaction. You should receive an "Order Confirmation" with full details of your purchase by e-mail, and the Treasurer with mail your membership card to you. That's all there is to it!

Renew by Mail

You can, of course, still mail a check along with current contact and e-mail information to our Treasurer, Woody Stone, at 2 Blue Corn Ct. Sandia Park, NM 87047. The easy way to do that is to go to that same new "Membership" tab on the NMWT homepage and select "Membership Form" from the drop-down menu.

Fill in the form (PLEASE PRINT CLEARLY) and mail it to Woody with your check. Should you have any issues or questions regarding the new Credit Card payment system or if you are not sure if your membership expires at the end of 2020, feel free to call Tom at 828-808-7876 or e-mail him at eesphoto492@gmail.com.

Want a quick jump to our website, scan here!



How to Contribute to High Desert Turning

The NMWT’s newsletter editor has submitted High Desert Turning to the AAW’s 2020 and 2021 Best Chapter Newsletter Contest. Unfortunately for the NMWT, High Desert Turning has not been selected in the top 3 chapters either year. However, the NMWT chapter website won 1st prize in 2020 for the Best Chapter Website Contest. So, we know it’s possible to rank highly among the numerous chapters of the AAW. Much of the website content can be found in High Desert Turning.

So, now you ask, “What is in it for me?” Well, we will get to that. But first, **our ask is this:**

Submit a short snippet, article or outline of a shop tip or trick you use. You’ll be surprised by how many folks will benefit from your personal idea or solution
Take 2, 3, 4 or 5 photos of your process, pieces or how your tip or trick comes together to illustrate how the membership can implement your idea in their shop
If appropriate, share credit where credit is due should you have benefited from a social media post, YouTube video or viewing an in-person demonstration.

Please consider contributing to the NMWT newsletter High Desert Turning! No tip too elementary and no trick too simple will go unpublished. We can all learn and gain confidence from others! Send your contribution to news@nmwoodturners.org

Here’s what’s in it for you:

You are inspiring dozens upon dozens of other turners implement shop solutions that ease their way and improve their flow and turning
You have ideas and solutions that many folks likely envy and would benefit from knowing. There’s gratification in uplifting fellow turners

The club has a large tote of exotic, seasoned and figured timber that was acquired during lockdown and you will be free to select a piece of your choice for every published tip or trick. The tote has wonderful turning stock and you can rifle through it for your choice.

We will include a NMWT club sticker with your selected piece of timber

NMWT’s Logo Apparel

NMWT Cap, Shirts & Smock	
Caps (Baseball)	\$15
Long Sleeve Denim Shirt	\$30
Short Sleeve Denim Shirt	\$30
Short Sleeve Snap Shirt	\$30
Polo (golf) Shirt w/pocket	\$30
T-Shirt V-Neck	\$20
Smocks	\$50

Items include embroidered NMWT logo
Names embroidered on shirts are additional \$5.00
Sizes XXL, 3XL, 4XL and up are an additional \$3.00
Contact: Ivan Blomgren at (505)615-5096

Order Form on Next Page

Get order forms at club meetings from Ivan Blomgren or download from the website and turn in the completed order form(s) to Ivan with payment. *Orders are submitted on a quarterly basis and can be placed with Ivan up through the middle meeting of each quarter.*

Full payment for an order will need to be submitted with each order form before it can be processed! Order placement cut off dates for each quarter will be as follows:

Quarter	Months	Order Meeting	Delivery Meeting
1st	Jan-Mar	Feb	Mar
2nd	Apr-Jun	May	Jun
3rd	Jul-Sept	Aug	Sept
4th	Oct-Dec	Nov	Dec



NMWT's Logo Apparel

NMWT SHIRT/CAP ORDER FORM

NAME _____ DATE _____

ADDRESS _____

TELEPHONE _____

Caps with Logo BX005: Color: (Dark Green, Red, Navy, Stone)

(Embroidery on Navy caps will be silver in place of black)

No. of caps @\$15 each _____ \$ _____

Long Sleeve Denim Shirt with Logo: Color: (Dark Denim, Light Denim, Washed Black)

Men M550 - Sizes: (S, M, L, XL), (2XL - 4XL add \$3)

M550T (Tall add \$6 each [in Men's size only])

Ladies M550W - Sizes: (S, M, L, XL), (2XL - 4XL add \$3)

No. of shirts @\$30 each _____ \$ _____

Short Sleeve Denim Shirt with Logo: Color: (Dark Denim, Light Denim, Washed Black)

Men M550S - Size: (S, M, L, XL), (2XL - 4XL add \$3)

No. of shirts @\$30 each _____ \$ _____

Short Sleeve Key West Performance Staff Shirt with Logo (Two Pockets):

Color: (White, Cloud Blue, Green Mist, Khaki, Navy)

Men M580 - Size: (S, M, L, XL), (2XL - 4XL add \$3)

Ladies M580W - Size: (S, M, L, XL), (2XL - 4XL add \$3)

No. of shirts @\$40 each _____ \$ _____

Polo Shirts w/ Pocket with Logo: Color: (White, Black, Forest, Campus Gold, Light Blue, Burgundy, Classic Navy, Classic Red, Electric Blue, Platinum)

Men 88181P - Size: (S, M, L, XL), (2XL - 4XL add \$3)

Ladies 78181P - Size: (S, M, L, XL), (2XL - 4XL add \$3)

No. of shirts @\$30 each _____ \$ _____

T-Shirts V-Neck with Logo: Color: (White, Black, Turquoise, Ocean Blue, Maroon, Navy, Red, True Royal, Silver)

Men 3005 - Size: (S, M, L, XL), (2XL - 4XL add \$3)

Ladies B6005 - Size: (S, M, L, XL), (2XL - 4XL add \$3)

No. of shirts @ \$20 _____ \$ _____

Name on garment is \$5 (no names on caps) X _____


Name _____ \$ _____

Extra Logo (AWA) \$5 X _____ \$ _____

Total \$ _____

Rev.: 11/07/2020

Discount & Rebate Partners

ALBUQUERQUE
Exotic

Woods
www.albuquerqueexoticwoods.com
 (505) 299-6945

NMWT members can get a 10% discount upon presenting a current membership card. Military and first responders also get a 10% discount.


CRAFT SUPPLIES USA
 THE WOODTURNERS CATALOG
www.woodturnerscatalog.com

CSUSA offers a discount to members on large orders and has a club support program. Visit the web site or phone Kathy Lawrence at 1-800-551-8876

Penn State Industries

www.pennstateind.com

Register as a member of New Mexico Woodturner at Penn State Industries and automatically get 10% off (in addition to most other promos) your entire order !!! Yes! In effect, you will be doubling dipping on the discounts!!!

Register by sending an email to hy.d.tran@gmail.com with the name, address and email to which your Penn State catalogs are sent. Once you're registered, you'll automatically get 10% off every time you shop online (not applicable to phone or mail orders).

RUGBY®
 Architectural Building Products
 (505) 924-2270

NMWT members receive Wholesale Prices.

Rugby's has hardwoods, Thermofused Melamine, plywood, veneers, and furniture grade pine.



DENDROTECHNOLOGY
 TIN SHED MILLWORKS

(505) 980-6161 www.dendrosm.com

LIVE EDGE SLABS, TURNING BLANKS, CUSTOM MILLING

We offer 10% off our listed prices to members and give a free item from our oddments box or a turning blank to first time member customers.



**8100-M4 Wyoming Blvd. NE, #188
Albuquerque, NM 87113**
