



# High Desert Turning

You're gonna love the way you turn.

You can do this. We guarantee it!

Membership details found within [www.nmwoodturners.org](http://www.nmwoodturners.org)



## NMWT's Upcoming Monthly Meeting

Club Meetings are generally held 10:00 am to 12:30 pm on the first Saturday of the month



mmocho.com

**Who:** Michael Mocho

**Topic:** Skew and Texturing

**When:** Sept 7<sup>th</sup> @ 10:00 am MT

(In-person and online demo – Zoom session opens at 9:30 am)

**Where:** North Domingo Baca Multigenerational Center  
7521 Carmel NE Albuquerque, NM 87113

**Please see next page for more information regarding guest speaker(s)**

## President's Turn

**A u t h o r : T o m D u r g i n**

Turners,

We are here, State Fair 2024. Your entries are in and soon we'll be showing the kids and people at the fair how fun turning can be. If you've not talked with Bill and signed up to demo you are **MISSING OUT**. It is so much fun and this is our best chance for new blood and to plant that seed for woodturning in the kids.

I'll be honest, I'm looking forward to some cooler weather, looking forward to the holidays coming up in a few months and looking forward to time in the shop on the lathe. I hope to have a very productive fall out in the shop and sure hope you do also.

Don't forget about Beads of Courage, with over 150 members in this club we still have time to get a bunch more done this year.

Don't miss out being a part of the fair this year, you won't be sorry.

Tom Durgin

NMWT President



**Thomas Durgin -  
President**

**NMWT's Upcoming Monthly Meeting****A u t h o r :   L a r r y   L i n f o r d**

For the September 7 club turning meeting, Michael Mocho will first demonstrate the nuances and versatility of the skew chisel – it's not just for turning beads and coves on spindles. Michael will show us why this often-maligned tool is one of his favorites for many aspects of woodturning. He will teach us how to apply the skew to the wood in safely and confidence. It truly is one of the most versatile tools in our tool chest.

Michael will then demonstrate a variety of methods of adding character and artistic variation to your turnings through texturing. These techniques can change the entire surface of your vessel or be limited to selected areas in which the usually smooth, shiny qualities can be made more attractive in the eye of the beholder.

Larry Linford will distribute packs of 10 pen kits, complete with pen blanks, for the 2024 Turning for Troops Project at the September meeting. Members are asked to try to return the finished pens within 60 days of picking up the kits

**Future Programs/Activities**

<b>Oct 5<sup>th</sup></b>	Bill Zerby	Sharpening
<b>Nov 2<sup>nd</sup></b>	Jim McLain/Dave Croxton	Inlay
<b>Dec 7<sup>th</sup></b>	NMWT Members	Gift Exchange & 2025 Planning

**NMWT Monthly Board Meeting****Open to all Members****When: Sept 25<sup>th</sup>, 2024 @ 7:30 pm**

Contact [info@nmwoodturners.org](mailto:info@nmwoodturners.org) or  
any board member for more info or  
the Zoom link

**Reflections from Last Month****Turning with Epoxy by Johnathan McDonell****A u t h o r : L a r r y L i n f o r d**

Johnathan started off talking about HDPE molds, including candle molds from Hobby Lobby. He also discussed spraying molds with Mold Release, such as Crafty Candles release from Hobby Lobby.

When pouring epoxy, place plastic sheets under mold and even on floor beneath the table. Epoxy has roughly water consistency and will run and find minute holes in molds. There are many dies, including metallic dies. Most are powder, a few are liquid. He cautioned that glitter and glowing compounds, have a tendency to sink to the bottom as the epoxy cures if not frequently stirred

Liquid pigments do not settle. Two or three drops will usually suffice for a heavily tinted product. The more “packed” the pigments, the less light can pass through. Allow the epoxy to partially set before mixing the pigments in order to keep them separate so you can form designs or flows instead of blending the colors.

Don’t mix too early. Epoxy can take up to 72 hours to set enough to remove from mold. SPR Resin formulated to set more quickly – 24 hours?

Johnathan recommended slamming mold onto table or counter to shake loose any hiding bubbles. Most materials for inclusions (wood, stone, plastic) have shapes that can harbor bubbles that can become noticeable later. Bubbles may still form, but they can be popped on the surface with a heat gun.

Make sure the bucket, cup, bowl, or any item used for mixing epoxy is clean. After removing all dust, clean them with denatured alcohol.

The shelf life of epoxy can be years.

If using wood, de-bark the piece beforehand. Dry wood is better than green because of the potential for movement in the latter. Johnathan has never used green wood. You can cut an epoxy tenon on a vessel; epoxy is strong enough. You can also hot glue set epoxy to wood. Use a seal coat on the wood so the watery epoxy does not soak into the wood and force out more bubbles. Seal 8-10 hours before the pour.

Smaller pieces of wood will float to the surface during the pour. Weight them down. If pieces need to remain connected or mounded, use multiple layers of tape to hold them.

Higher temperatures and humidity help cure time; maybe go from 72 hours to 68 hours. YouTube videos don’t tell you they reduce temps by 40 degrees. Longer cure time reduces bubbles.

Pressure pots are not necessary, but they can help remove stubborn bubbles. Pouring slower is better for reducing bubbles. You can also let the bubbles rise in the bucket before pouring.

Remember – curing epoxy generates heat. Some plastics are inappropriate for molds as they will melt. PVC and silicone can be used if they are thick enough.

(Continued on the next page)

## Reflections from Last Month



## Turning with Epoxy by Johnathan McDonell

**A u t h o r : L a r r y L i n f o r d**

Turning can be done with standard turning tools, but carbide tools work better than HSS. Mask up. Use regular sandpaper and compounds. Sand to at least 400 grit, then move to higher grits, even into the 1000s to get a high sheen. Dust collectors are useless because static charge will make the shavings stick to the walls of the hoses.

Costs: The epoxy mix can run \$30 to \$120 per box. Unused portions can last years

### Johnathan's Cheat Sheet

#### Part 1 (Prep your mold)

- Form Materials to Use
  - Melamine
  - One Piece Silicone Molds
  - One Piece HDPE Molds
  - HDPE
  - MDF
  - Tyvek Tape/Sheathing Tape/Tuck Tape/Housewrap Tape (Epoxy Tape)
  - 100% Silicone (colored is better; see below)
- Type of Epoxy you will use (water-consistently will run everywhere)
- Overlap your tape seams (No tears, folds or bubbles if possible)
- Clean and check mold pieces for tears, clean old silicone off, put on new tape (if necessary), ensure a clean mold.
- Ensure mold is clean and start assembly of the mold pieces
- Screws should be large-head trim screws or something with a large base
- Assemble mold ensuring that all seams are tight and water proof
- Silicone the seams of walls and sides (inside and outside for larger pours). More is better. Colored silicone allows you to see if you are low in any one spot.
- Using ball tool (fondant tool, cake-making tool), spread silicone out creating 3 beads (vertical wall, corner, form bottom.
- Allow sufficient time for the silicone to dry – ideally overnight

#### Part 2 (Material Preparation)

- Remove Bark from any live edges and voids in the material
- Surface material, if possible, to create a flat surface on the bottom side
- Apply seal coat to the material, either casting resin or coating resin. Be sure to coat all surfaces that will touch resin.
- Allow resin on material surfaces to dry thoroughly

(Continued on the next page)

## Reflections from Last Month



## Turning with Epoxy by Johnathan McDonell

A u t h o r : L a r r y L i n f o r d

### Part 3 (Preparation for Pour)

- Place material in the form without breaking the silicone seal in the corners. Do not put down and slide into place!
- Clamp material down inside the mold. Cauls and top and bottom with spacer blocks wrapped in tape.
- Measure out your needed volume for the pour:
  - Average width x length x thickness = cubic inches
  - Take cubic inches to Google convert to Liters (easiest way)
  - Add 10% to account for cracks/voids/inclusions
- Mix the epoxy in a 2:1 ratio by volume. Ensure you scrape the sides and bottom of the mixing container. You can use a paddle mixer if necessary.
  - Bubbles are not a concern at this time
- Add pigment color of your choice.
  - Add more than you think you will need. If you like the color in the container, add more of the pigment to ensure the color stays.
  - Mix to ensure that the pigment is fully mixed and that there are no clumps in the mixture
- Pour the epoxy into the mold

### Part 4 (Babysitting)

- After pouring the epoxy into the mold, you will need to take some time and ensure that the mold does not have any leaks and that the epoxy is flowing into all the places you wanted it to
- The next several hours will be key to ensure that there are no leaks as well as you can play with the swirl patterns to see what you like.
- Depending on the resin that is used, you will have anywhere between 8-14 hours of working time that the resin will be in a watery to warm honey consistency.
  - We recommend checking on the epoxy every 25-30 minutes for the first 4 hours, and every 1 to 2 hours thereafter.
  - This is done to ensure that there are no slow leaks and you can monitor the bubbles
- During this time you can use either a heat gun or torch to pop any bubbles that rise to the surface.
  - For stubborn bubbles that will not rise, you can use a popsicle stick to work them to the surface
- During this time make sure to clean out any debris that falls into or lands in your project
- When the resin becomes more of the “room temperature honey” consistency you can start to play with designs for swirls and patterns within the epoxy.
  - This is where you will “set” your swirl or pattern.
  - Monitor your project through this time about every 30-45 minutes to ensure your pattern sticks.

(Continued on the next page)

**Reflections from Last Month****Turning with Epoxy by Johnathan McDonell****A u t h o r : L a r r y L i n f o r d****Part 5 (De-mold and Finish)**

- Once the resin is cured, usually 72+ hours, it is time to pull it from the mold
  - Depending on the mold material, the removal process will differ.
    - Melamine – Unscrew all sides, use a wedge or similar to separate the bottom from the project
    - HDPE – Use a mallet and gently strike the sides and bottom to separate the sides of the mold
    - One Piece Silicone Molds – Gently pull the sides away from the piece making sure not to tear your mold
- Once the piece is out of the mold, it needs to be flattened, sanded and finished
- If it needs to be flattened – Router sled, Planer, Drum Sander
- If it does not need to be flattened, then route and prep the top and sides for whatever finish you are choosing to use

**Part 6 (Finishing)**

- There are multiple finishing options:
  - Spray-on lacquer
  - Rubio Monocoat
  - Wipe-on or brush-on top coats
  - Epoxy Bar Top coatings (see below)
  - Sand and polish to as high a sheen as possible

**Part 7 (Epoxy Topcoat)**

- Using UVPoxy – mixed in a 1:1 ratio by volume
  - TIP: Pour part B in the mixing cup first as this levels out faster
- Mix the epoxy by hand to ensure minimal bubbles formed during the process
  - Popsicle sticks work well for this step
- Pour the mixture onto the top of your piece and spread using a V-notched spreader to ensure equal distribution of the epoxy
- You MUST babysit the epoxy to ensure that you can pop the surface bubbles and use ONLY a heat gun for this step. Use of a torch can/will cause the epoxy to form “icebergs” if the torch is held over the epoxy for even a half-second too long
- The surface must also be watched to try to avoid any debris falling onto the surface, creating defects
  - Great time for tweezers and good lighting to see and pluck out anything that falls in

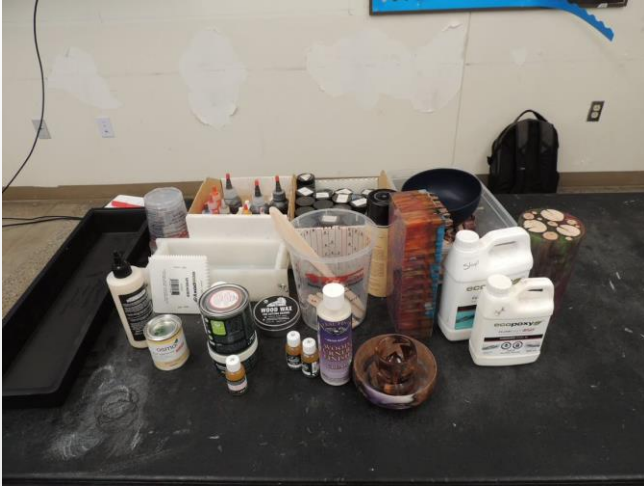


## Reflections from Last Month



## Turning with Epoxy by Johnathan McDonell

A u t h o r : L a r r y L i n f o r d



## Event



N M S t a t e F a i r 2 0 2 4

A u t h o r : B i l l M a n t e l l i

As in previous years, our display and demonstrations will be in the Creative Arts Building

Entries will be accepted on Friday August 23 and Saturday August 24 9:00 am to 5:00 pm both days. To see the Premium Book (State Fair and NMWT rules) online, go to Expo NM, click on State Fair, under Participate click on Competitions, click on Creative Arts, scroll down to 2024 Premium Books, scroll down to woodturners and click one more time and you are there.

Starting in 2021 the NM State Fair Commission charges a \$5 per person entry fee for all Creative Arts entrants. Our Board of Directors has again determined that we will reimburse the \$5 entry fee to all NMWT members entering in the woodturning section.

The State Fair is a fantastic opportunity to show the public some of the useful and beautiful things we create from a chunk of wood. It also provides an opportunity for us to promote the New Mexico WoodTurners.

Entering a turning, or any number of turnings, gets you a written critique of every entry by some of the best turners in New Mexico, and you may even win a ribbon or two.

If you are a member of the American Association of Woodturners or become a member, (you can join instantly online) you can demonstrate at the fair. Our insurance for demonstrators is through the AAW.

The State Fair provides the venue and the ribbons and the NMWT's provide about 460 man/hours to make it all work. WE NEED YOUR HELP

The fair provides free parking, and free admission, and if you request it, transportation for you and your tools to and from the parking lot. Albuquerque Exotic Woods will Provide turning blanks suitable for turning tops, goblets, small end grain bowls, small boxes, bottle stoppers, etc. Or you can bring your own wood and turn whatever you like. When you are in the neighborhood stop by AEW and thank Johnathan for his generosity.

The State Fair is a great opportunity to promote our organization, but we need volunteers to do it.

Look over the sign-up sheets and then call me at (505) 400-0266 ASAP to ensure you get the time slots you want. The sign-up sheets will also be available at the July 6 and August 3 meetings. Entrance tickets, parking passes, Demonstrator and Video Monitor Information will be available at the September 7 meeting, however, since the Fair starts before our September meeting, I will contact volunteers who have 'volunteer dates' before our meeting, about tickets, parking passes and info.

Thanks for volunteering,

Bill Mantelli, State Fair Coordinator



# Event



## N M S t a t e F a i r 2 0 2 4

### A u t h o r : B i l l M a n t e l l i

#### New Mexico State Fair 2024 NEW MEXICO WOODTURNERS Demonstrator Sign-Up



DAY	DATE	TURNING DEMONSTRATOR						VIDEO MONITOR		
		Lathe #1			Lathe #2					
		9:30am-1:30pm	1:00-4:30pm	4:00-8:00pm	9:30am-1:30pm	1:00-4:30pm	4:00-8:00pm	9:30am-1:30pm	1:00-4:30pm	4:00-8:00pm
Thursday	Sept. 5									
Friday	Sept. 6									
Saturday	Sept. 7	X			X			X		
Sunday	Sept. 8									
Monday	Sept. 9									
Tuesday	Sept. 10									
Wednesday	Sept. 11									
Thursday	Sept. 12									
Friday	Sept. 13									
Saturday	Sept. 14									
Sunday	Sept. 15									

Contact Bill Mantelli for open  
volunteer slots 505-400-0266

NOTE: Due to insurance requirements, turning demonstrators must be a member of AAW.

Bill Mantelli (505) 400-0266

## Event



N M S t a t e F a i r 2 0 2 4

A u t h o r : B i l l M a n t e l l i

## NEW MEXICO WOODTURNERS 2024

## State Fair Volunteers

## Woodturning Check-In 9:00 am – 5:00 pm

Day	Date	Name	<u>Name</u>
Fri.	Aug. 23		
Fri.	Aug. 23		
Sat.	Aug. 24		
Sat.	Aug. 24		

## Photographer, Aide, &amp; Display Set-up

Day	Date	Name
Wed.	Aug. 28	
Wed.	Aug. 28	
Wed.	Aug. 28	
Wed.	Aug. 28	

## Judges &amp; Aides 9:00 am – 5:00 pm

Day	Date	Judge	Aide	Youth	Novice	Inter	Advanced	Professional
Mon.-Tue.	Aug. 26, 27							
Mon.-Tue.	Aug. 26, 27							
Mon.-Tue.	Aug. 26, 27							
Mon.-Tue.	Aug. 26, 27							

## Equipment Crew

Day	Date	Lathe/Equip. Set-Up/Dismantle
Wed.	Aug. 28	
Wed.	Aug. 28	
Wed.	Aug. 28	
Wed.	Aug. 28	
<b>Tue.</b>	<b>Sept. 17</b>	<b>Return Equip. to Storage</b>

## Pick-Up Entries 9:00 am - 5:00 pm

Day	Date	Name
Tue.	Sept. 17	
Tue.	Sept. 17	
Tue.	Sept. 17	

BILL MANTELLI (505) 400-0266

Contact Bill Mantelli for open  
volunteer slots 505-400-0266

## Event



# S t u d i o   A r t   T o u r

**B y P a t r i c i a A p t**



SAND | A  
HE | GHTS  
ART | STS™

**Studio Art Tour**  
September 7 and 8, 2024  
SAT & SUN 10 a.m. to 5 p.m.

"For more information and a map of the Tour stops, visit [www.sandiaheightsartists.com](http://www.sandiaheightsartists.com)"





## Event

N o r t h   V a l l e y   S t u d i o   T o u r

P r o v i d e d   b y   T o m   D u r g i n

The background of the poster is a vibrant, abstract painting of a desert landscape. It features rolling hills and mountains in shades of purple, blue, and orange, with stylized cacti in the foreground. The overall style is expressive and colorful.

2024  
**NORTH VALLEY**  
STUDIO TOUR

SEPTEMBER 21 - 22  
10AM - 5PM

Arroyo Seco Beauty | Rhea Taylor

We are painters, woodworkers, ceramicists, sculptors, jewelers, fiber artists, metalsmiths, and more. Join us in our studios as we share our art and our creative process.

[www.northvalleystudiotour.com](http://www.northvalleystudiotour.com)

A square QR code is located in the bottom right corner of the poster, providing a digital link to the studio tour website.

(Continued on the next page)



# Event

## North Valley Studio Tour

Provided by Tom Durgin

**2024 NORTH VALLEY STUDIO TOUR**  
SEPTEMBER 21 - 22  
10AM - 5PM

**1** Jeff Peltier  
Oil, Acrylic, Pottery  
jeffpeltier.com

**2** Mark Levin  
Wood  
marklevin.com

**3** Mark Keeling  
Wood  
markkeeling.com

**4** Monica Larkin  
Pottery  
monicalarkin.com

**5** David Welch  
Oil, Acrylic  
davidwelch.com

**6** Teresa Carl  
Acrylic  
terescarl.com

**7** Carol Sparks  
Watercolor  
carolsparks.com

**8** Linda Wilkerson  
Oil  
lindawilkerson.com

**9** Marilyn Dwyer  
Acrylic  
marilyndwyer.com

**10** Liz Fritzsche  
Ceramics  
lizfritzsche.com

**11** Roger Doherty  
Oil, Ceramics  
rogerdoherty.com

**12** Kelly Jo Kuchler  
Oil, Acrylic, Ceramics  
kellyjoart.com

**13** Steve Shady  
Oil, Pottery  
steveshady.com

**14** Janet Berkus  
Acrylic, Oil, Wood, Metals  
janetberkus.com

**15** Susan Luchterschiff  
Acrylic, Wood, Metals  
susanluchterschiff.com

**16** Sandra Lapina  
Photo, Ceramics  
sandalapina.com

**17** Lauren Ryan  
Acrylic, Oil, Wood, Metals  
laurenryan.com

**18** Cheryl McCay  
Wood  
cherylmccay.com

**19** Mike T. Gonzalez  
Oil, Acrylic, Wood, Metals  
mikegonzalez.com

**20** Michelle Sanford  
Ceramics  
michellesanford.com

**21** Bill Schaffert  
Acrylic  
billschaffert.com

**22** Lisa Taylor  
Acrylic, Oil  
lisataylor.com

**23** Peggy King  
Glass Art  
peggyking.com

**24** Susan Luchterschiff  
Acrylic, Wood, Metals  
susanluchterschiff.com

**25** Susan Luchterschiff  
Acrylic, Wood, Metals  
susanluchterschiff.com

**26** Susan Luchterschiff  
Acrylic, Wood, Metals  
susanluchterschiff.com

**27** Susan Luchterschiff  
Acrylic, Wood, Metals  
susanluchterschiff.com

**28** Susan Luchterschiff  
Acrylic, Wood, Metals  
susanluchterschiff.com

**29** Susan Luchterschiff  
Acrylic, Wood, Metals  
susanluchterschiff.com

**30** Susan Luchterschiff  
Acrylic, Wood, Metals  
susanluchterschiff.com

**31** Susan Luchterschiff  
Acrylic, Wood, Metals  
susanluchterschiff.com

**32** Susan Luchterschiff  
Acrylic, Wood, Metals  
susanluchterschiff.com

**33** Susan Luchterschiff  
Acrylic, Wood, Metals  
susanluchterschiff.com

**34** Susan Luchterschiff  
Acrylic, Wood, Metals  
susanluchterschiff.com

**35** Susan Luchterschiff  
Acrylic, Wood, Metals  
susanluchterschiff.com

**36** Susan Luchterschiff  
Acrylic, Wood, Metals  
susanluchterschiff.com

**37** Susan Luchterschiff  
Acrylic, Wood, Metals  
susanluchterschiff.com

**38** Susan Luchterschiff  
Acrylic, Wood, Metals  
susanluchterschiff.com

**39** Susan Luchterschiff  
Acrylic, Wood, Metals  
susanluchterschiff.com

**40** Susan Luchterschiff  
Acrylic, Wood, Metals  
susanluchterschiff.com

**41** Susan Luchterschiff  
Acrylic, Wood, Metals  
susanluchterschiff.com

**42** Susan Luchterschiff  
Acrylic, Wood, Metals  
susanluchterschiff.com

**43** Susan Luchterschiff  
Acrylic, Wood, Metals  
susanluchterschiff.com

**44** Susan Luchterschiff  
Acrylic, Wood, Metals  
susanluchterschiff.com

**45** Susan Luchterschiff  
Acrylic, Wood, Metals  
susanluchterschiff.com

**46** Susan Luchterschiff  
Acrylic, Wood, Metals  
susanluchterschiff.com

**47** Susan Luchterschiff  
Acrylic, Wood, Metals  
susanluchterschiff.com

**48** Susan Luchterschiff  
Acrylic, Wood, Metals  
susanluchterschiff.com

**49** Susan Luchterschiff  
Acrylic, Wood, Metals  
susanluchterschiff.com

**50** Susan Luchterschiff  
Acrylic, Wood, Metals  
susanluchterschiff.com

**51** Susan Luchterschiff  
Acrylic, Wood, Metals  
susanluchterschiff.com

**52** Susan Luchterschiff  
Acrylic, Wood, Metals  
susanluchterschiff.com

**53** Susan Luchterschiff  
Acrylic, Wood, Metals  
susanluchterschiff.com

**54** Susan Luchterschiff  
Acrylic, Wood, Metals  
susanluchterschiff.com

**55** Susan Luchterschiff  
Acrylic, Wood, Metals  
susanluchterschiff.com

**56** Susan Luchterschiff  
Acrylic, Wood, Metals  
susanluchterschiff.com

**57** Susan Luchterschiff  
Acrylic, Wood, Metals  
susanluchterschiff.com

**58** Susan Luchterschiff  
Acrylic, Wood, Metals  
susanluchterschiff.com

**59** Susan Luchterschiff  
Acrylic, Wood, Metals  
susanluchterschiff.com

**60** Susan Luchterschiff  
Acrylic, Wood, Metals  
susanluchterschiff.com

**61** Susan Luchterschiff  
Acrylic, Wood, Metals  
susanluchterschiff.com

**62** Susan Luchterschiff  
Acrylic, Wood, Metals  
susanluchterschiff.com

**63** Susan Luchterschiff  
Acrylic, Wood, Metals  
susanluchterschiff.com

**64** Susan Luchterschiff  
Acrylic, Wood, Metals  
susanluchterschiff.com

**65** Susan Luchterschiff  
Acrylic, Wood, Metals  
susanluchterschiff.com

**66** Susan Luchterschiff  
Acrylic, Wood, Metals  
susanluchterschiff.com

**67** Susan Luchterschiff  
Acrylic, Wood, Metals  
susanluchterschiff.com

**68** Susan Luchterschiff  
Acrylic, Wood, Metals  
susanluchterschiff.com

**69** Susan Luchterschiff  
Acrylic, Wood, Metals  
susanluchterschiff.com

**70** Susan Luchterschiff  
Acrylic, Wood, Metals  
susanluchterschiff.com

**71** Susan Luchterschiff  
Acrylic, Wood, Metals  
susanluchterschiff.com

**72** Susan Luchterschiff  
Acrylic, Wood, Metals  
susanluchterschiff.com

**73** Susan Luchterschiff  
Acrylic, Wood, Metals  
susanluchterschiff.com

**74** Susan Luchterschiff  
Acrylic, Wood, Metals  
susanluchterschiff.com

**75** Susan Luchterschiff  
Acrylic, Wood, Metals  
susanluchterschiff.com

**76** Susan Luchterschiff  
Acrylic, Wood, Metals  
susanluchterschiff.com

**77** Susan Luchterschiff  
Acrylic, Wood, Metals  
susanluchterschiff.com

**78** Susan Luchterschiff  
Acrylic, Wood, Metals  
susanluchterschiff.com

**79** Susan Luchterschiff  
Acrylic, Wood, Metals  
susanluchterschiff.com

**80** Susan Luchterschiff  
Acrylic, Wood, Metals  
susanluchterschiff.com

**81** Susan Luchterschiff  
Acrylic, Wood, Metals  
susanluchterschiff.com

**82** Susan Luchterschiff  
Acrylic, Wood, Metals  
susanluchterschiff.com

**83** Susan Luchterschiff  
Acrylic, Wood, Metals  
susanluchterschiff.com

**84** Susan Luchterschiff  
Acrylic, Wood, Metals  
susanluchterschiff.com

**85** Susan Luchterschiff  
Acrylic, Wood, Metals  
susanluchterschiff.com

**86** Susan Luchterschiff  
Acrylic, Wood, Metals  
susanluchterschiff.com

**87** Susan Luchterschiff  
Acrylic, Wood, Metals  
susanluchterschiff.com

**88** Susan Luchterschiff  
Acrylic, Wood, Metals  
susanluchterschiff.com

**89** Susan Luchterschiff  
Acrylic, Wood, Metals  
susanluchterschiff.com

**90** Susan Luchterschiff  
Acrylic, Wood, Metals  
susanluchterschiff.com

**91** Susan Luchterschiff  
Acrylic, Wood, Metals  
susanluchterschiff.com

**92** Susan Luchterschiff  
Acrylic, Wood, Metals  
susanluchterschiff.com

**93** Susan Luchterschiff  
Acrylic, Wood, Metals  
susanluchterschiff.com

**94** Susan Luchterschiff  
Acrylic, Wood, Metals  
susanluchterschiff.com

**95** Susan Luchterschiff  
Acrylic, Wood, Metals  
susanluchterschiff.com

**96** Susan Luchterschiff  
Acrylic, Wood, Metals  
susanluchterschiff.com

**97** Susan Luchterschiff  
Acrylic, Wood, Metals  
susanluchterschiff.com

**98** Susan Luchterschiff  
Acrylic, Wood, Metals  
susanluchterschiff.com

**99** Susan Luchterschiff  
Acrylic, Wood, Metals  
susanluchterschiff.com

**100** Susan Luchterschiff  
Acrylic, Wood, Metals  
susanluchterschiff.com

<https://www.northvalleystudiotour.com/>



## Silent Auction

C o n t a c t : N M W T T r e a s u r e r

We love to have nifty items or pieces of timber that can be auctioned at our next meeting to support the Scholarship Fund.

Potential ideas include rough turned bowls, gouges gathering dust, seasoned blanks or turning accessories.

Your contributions go to benefit the **Red Hollenbach Scholarship Fund** which is used to reduce the cost for members to attend professional demonstrator's hands-on sessions.



If you are seeking an handcrafted donation for your charitable organization, please email a request to: [info@nmwoodturners.org](mailto:info@nmwoodturners.org)

## NMWT on Social Media



### The New Mexico Woodturners are on Facebook and YouTube



Facebook is just one way to share your work. However, it's also a great platform to ask questions, request constructive criticism and rub shoulders with other turners.

Various members of the NMWTs moderate the social media accounts and promote the craft and our club actively on these outlets.

A number of the Facebook group members are not NMWT members and that's okay! However, by our NMWT membership being active on social media we can also share the benefits of club membership, promote club activities and foster relationships with turners around the globe.

Please join the Facebook group, subscribe to the YouTube channel and watch us grow turning!

## Newsletter Submission

Got a great idea, tip, or trick that you'd like to share?

**We'd like to read about it.**

### What do you need to do?

Write up a description, brief or in-depth, and include a few photos if possible to better detail your idea.

If you like or use a certain webpage or a YouTube channel, please write about and site your source.

Please send articles to [news@nmwoodturners.org](mailto:news@nmwoodturners.org)

Disclaimer: Articles submitted aren't guaranteed a spot in the next issue, but they will be published if educational criteria is met and as it fits organizational needs.



Newsletter

**Submission**

Deadline

S

e

p

23<sup>rd</sup>



## Green Wood

We have expanded our inventory of wood species. We have acquired quite a bit of AZ Cypress. It is mostly rounds with diameters of 12 to 18 inches with limbs in the 4 to 6 inch range. I will bring half rounds cut on the long axis for those turners who do not have the equipment to cut it themselves. See ya in the parking lot.



## Green Wood Chairs

Joe "Stretch" Cole

480-216-3580

[jt.cole@hotmail.com](mailto:jt.cole@hotmail.com)

## Beads of Courage – NMWT's 2024 Challenge

### Our Challenge and Goal:

**For each club member to take the time and heart to make at least one Beads of Courage Box during 2023**

### What is Beads of Courage?

Beads of Courage (BOC) is the NMWT's Community Service Project.

Beads of Courage, Inc. is a 501 (c) (3) tax exempt organization working in partnership with the American Association of Woodturners (AAW).

[Official Guide to Beads of Courage – Woodturners Wanted](#)

### This is Local!

Our Beads of Courage Bowls are taken directly to UNMH Children's Cancer Facility here in Albuquerque for local patients. However, some bowls can also be sent to a National collection point in Tucson, Arizona.

UNMH Children's Cancer Facility has been treating nearly one hundred seriously ill cancer youngsters each year. For each medical treatment a child receives, he or she gets a bead which they can then keep in their bowl, hence Beads of Courage Bowls. The children do receive a bag to put their beads in, but a Beads of Courage Bowl is far more special and reflective of the hard work to beat cancer!

**NMWT currently produces approximately 8 bowls a year and it would be great to see that number increase exponentially.**

For more information regarding the program, where to purchase beads, or where to deliver your finely crafted bowl, please see:



BOC Website



## BOC Chair / Contacts

Scott Eckstein (NMWT BOC Contact)

505-270-0516

[seemee911@gmail.com](mailto:seemee911@gmail.com)

Brianna Hayes (UNM Certified Life Specialist)

505-991-8501

[bnhayes@salud.unm.edu](mailto:bnhayes@salud.unm.edu)

Abby Walker (UNM Certified Life Specialist)

505-991-8501

[abCWalker@salud.unm.edu](mailto:abCWalker@salud.unm.edu)



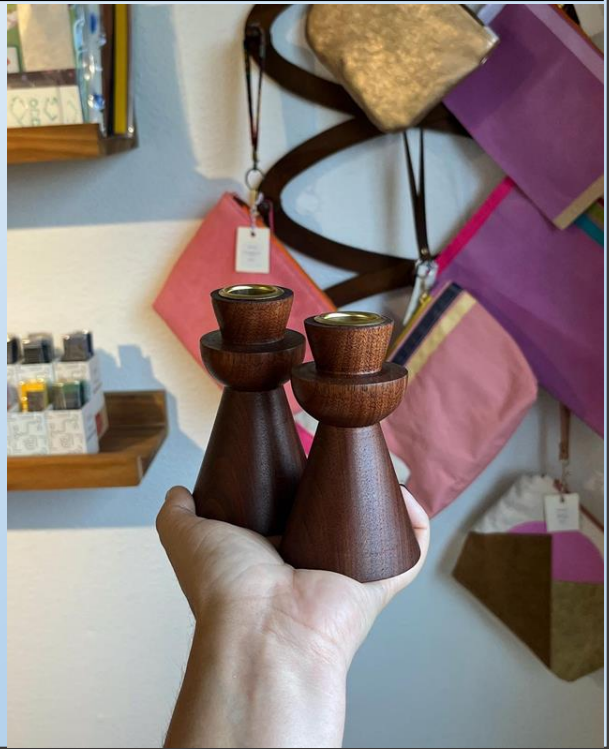
## Women in Turning

### Simple Candlestick Project

Author: Courtney Gale

I have some easy to follow instructions for a simple candlestick project! Choose a character-filled blank roughly 3x3x6 inches and gather the tools and materials listed below:

- Jacob's chuck
- Chuck
- Live center
- Dead center
- 7/8 inch drill bit
- Wood for waste block
- Roughing spindle gouge, spindle gouge or skew, parting tool
- 7/8 inch candlestick insert (can be purchased online)



(Continued on the next page)



**What we offer is access to the AAW site and wonderful monthly magazine, and a group of engaged and enthused turners!**

#### Join the private

[Facebook](#) group page [Women in Turning](#) to get ideas & support. AAW membership is not required.

#### Women in Turning (WiT) -- The

AAW strives to deliver the publications and services that our members need to grow, connect, explore, and thrive in the areas of woodturning that are important to them.

#### [Guest Membership](#)

**ALSO – join the AAW with a guest membership** so you can see what else WiT and AAW

By signing up for a complimentary Guest membership, you can have access to AAW resources for a full 60 days. You will be able to explore what the AAW has to offer, kick our tires, and hopefully decide to become a full-fledged, paid AAW member to benefit from everything the AAW has to offer.

### Local WiT Contacts

Courtney Gale (NMWT's WiT Liaison)	505-410-1678	<a href="mailto:courtneyngale@gmail.com">courtneyngale@gmail.com</a>
Nancy Matteson	801-694-6866	<a href="mailto:namatteson@hotmail.com">namatteson@hotmail.com</a>
Kay Grant	661-599-1832	<a href="mailto:wykayg@gmail.com">wykayg@gmail.com</a>
Erin Perry O'Donnell	505-926-1693	<a href="mailto:erin@dovetailworkshop.com">erin@dovetailworkshop.com</a>



## Women in Turning

### Simple Candlestick Project

Author: Courtney Gale



#### Tools:

- Dead center
- Live center
- Roughing spindle gouge

#### Step 1: Rough Out

- Rough out your spindle oriented blank between centers with a roughing spindle gouge

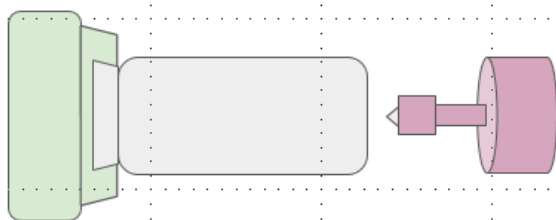


#### Tools:

- Parting tool or skew or spindle gouge

#### Step 2: Make Tenon

- Make a tenons on one side of your blank



#### Tools:

- Chuck
- Jacob's chuck
- (Jacob's chuck safety on next page)

#### Step 3: Drill hole for candle insert

- Mount blank in chuck
- Take Jacob's chuck and drill out hole for candle insert BEFORE shaping your candle.
- Drill deeper than you need in case you need to clean up the face of your candle stick

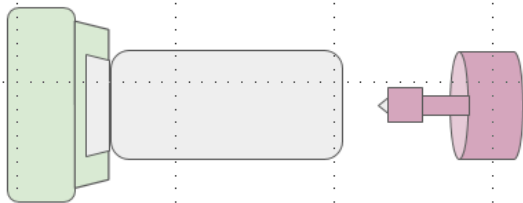
(Continued on the next page)



# Women in Turning

## Simple Candlestick Project

Author: Courtney Gale

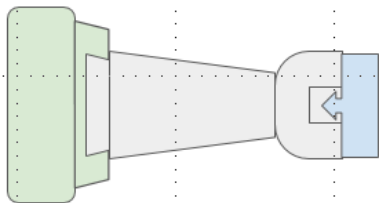


### Tools:

- Jacob's Chuck

### Jacob's Chuck Tips:

- Have the lathe running slower than your turning speed
- Don't have the bit touching the wood before starting lathe
- Pull out and clear shavings from bit at about every inch of depth
- Have left hand guide Jacob's chuck as you pull out

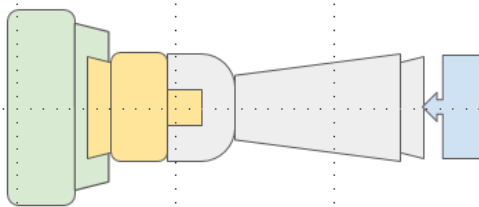


### Tools:

- Spindle gouge

### Step 4: Shape candlestick

- Shape and design your candle stick working from tailstock to headstock.
- Be sure to do any cleaning cuts on the face of your candlestick BEFORE creating any narrow details.
- Sand and, if desired, finish



### Tools:

- Spindle gouge or parting tool

### Step 5: Remove tenon

- Make a jam chuck - shape a waste block to the same diameter of the drilled hole
- Remove candle stick from chuck and center project on jam chuck
- Once candlestick is running true, use spindle gouge or parting tool to remove tenon.
- Be sure to undercut bottom



## Women in Turning

Try out an American Association of Woodturners (AAW) membership for 3 months!!

**We know you will be hooked!**

### AAW Membership Application

WIT (Women in Turning) is “dedicated to encouraging and assisting women in their pursuit of turning, sharing ideas and processes to further member’s skills and creativity, and increasing participation of women in the field of woodturning.”

The AAW WIT Committee agrees that to further this mission, we can work with chapters to help grow the number of women in AAW. Currently, women comprise less the 9% of AAW membership.

**To encourage women to join AAW, the WIT Committee offers a limited number of WIT sponsored half price AAW memberships to women for a one-year, full "General" AAW membership.**

**Eligibility** To be eligible, a grant recipient must be a woman and who has never previously been a member of AAW.

**Process** Only the chapter AAW WIT Liaison, Courtney Gale, chapter president or vice-president may request the grant. After we’ve received the application, the recipient will be sent a promotional code with instructions on how to use the code in applying for an AAW membership. If you have questions, please email wit@woodturner.org.

### **Limitations**

If the nominee is a new member of a local chapter (within the last two months), WIT will pay 100% of the AAW membership.

If the nominee has been a member of a local chapter for more than two months, WIT will pay 50% of the AAW membership.

If the nominee is not a member of a local chapter, WIT will pay 50% of the AAW membership.

Grants are currently limited to no more than two women, per chapter, per quarter.

Quarters end January 31, April 30, July 31, and October 31. Based on the number of requests, this limitation may change.

**We hope that this offer will be an incentive for new women woodturners to join your chapter.**

**[Click Here for AAW Specials for WIT](#)**



## Photo Gallery



### Instant



Tom Durgin Mimosa Bowl



Tom Durgin Basket Illusion  
Maple



Woody Stone Winged Bowl  
Natural Edge Unknown Wood

Please send gallery photos by the 3<sup>rd</sup> Saturday of the month to  
[gallery@nmwoodturners.org](mailto:gallery@nmwoodturners.org)



## Photo Gallery



### Instant



Dave Croxton Basket Illusion Hard Maple



Scott Eckstein Winged Bowl Underside Unknown Wood

Please send gallery photos by the 3<sup>rd</sup> Saturday of the month to  
[gallery@nmwoodturners.org](mailto:gallery@nmwoodturners.org)



## Photo Gallery



### Instant



Woody Stone Maple Bowl



Tom McLarty Bowl Honey Locust w/Turquoise Inlay

Please send gallery photos by the 3<sup>rd</sup> Saturday of the month to  
[gallery@nmwoodturners.org](mailto:gallery@nmwoodturners.org)



## Photo Gallery



### Instant



Tom McLarty Honey Locust Bowl w/Turquoise Inlay



Tom McLarty Osage Orange Bowl Underside Turquoise Inlay

Please send gallery photos by the 3<sup>rd</sup> Saturday of the month to  
[gallery@nmwoodturners.org](mailto:gallery@nmwoodturners.org)



## Photo Gallery



### Instant



Rex Funk Hollow Form Claro Walnut w/hand carving iridescent paint



Rex Funk Splash Bowl Alligator Juniper



Jim Harrison Segmented Bowl  
Maple, Hickory, Lacewood,  
Yellow Heart, Wenge

Please send gallery photos by the 3<sup>rd</sup> Saturday of the month to  
[gallery@nmwoodturners.org](mailto:gallery@nmwoodturners.org)

## Photo Gallery



### Instant



Jim Harrison Segmented Hollow Form Rose wood,  
Blood wood, Maple Wenge



Greg Fryeweaver Hollow Form Desert Willow

Please send gallery photos by the 3<sup>rd</sup> Saturday of the month to  
[gallery@nmwoodturners.org](mailto:gallery@nmwoodturners.org)



## Marketplace

### Title of Your Ad Here

Description of your Ad

Picture of your  
Advertisement

Contact info for your Ad

### Title of Your Ad Here

Description of your Ad

Picture of your  
Advertisement

Contact info for your Ad

**Wanted**  
  
Used Wagner or  
Robert Sorby  
Texturing/Spiraling  
tools.

Please contact Bill Baca @  
425-218-4562

### Bridge for Sale

**This is a sample marketplace posting.**

We welcome members to use this space for anything related to woodturning. There is no charge for listing an item. Ads will run for about one month.

To request a listing, send item and contact info to [sale@nmwoodturners.org](mailto:sale@nmwoodturners.org). Your ad will be reviewed and posted as quickly as possible.

\*\*\* You must be an NMWT member to post ads \*\*\*

See our Marketplace section on our website for better photos

Please notify [sale@nmwoodturners.org](mailto:sale@nmwoodturners.org) once item has sold

## 2022 Elected Officers, Directors & Committee Chairs

### President



Tom Durgin  
505-688-1369

### Vice President



Larry Linford  
505-870-1601

### Treasurer



Woody Stone  
828-808-7876

### Secretary



Sally Breedon  
505-352-0159

### State Fair



Bill Mantelli  
505-400-0266

### Membership



Tom McLarty  
505-298-3790

### Webmaster



Dennis Cahill  
505-620-2508

### Lead Video



Derek Roff  
505-438-1820

### Email Administrator



Hy Tran  
505-459-8132

### Member-at-Large



Mark Miller  
505-350-8584

### Equipment & Workshops Beads of Courage Chair



Scott Eckstein  
505-270-0516

### Logistics



Bob "Rocky" Rocheleau  
505-235-9002

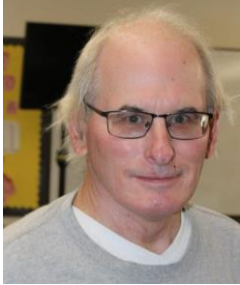
# SEEKING

**Green wood help**

Please speak to a board member regarding any of these positions

## 2022 Elected Officers, Directors & Committee Chairs

### Raffle Coordinator



Dean Cross  
575-644-8945

### Special Workshops



John Ellis  
505-463-7750

### Green Wood Manager(s)



### Green Wood Manager(s)



Joe "Stretch" Cole  
480-216-3580

### Past President



Rick Judd  
612-280-8300

### Newsletter Designer



Traci Durgin  
[news@nmwoodturners.org](mailto:news@nmwoodturners.org)  
505-688-1370

### Apparel Manager



Dave Croxton  
505-803-5521

### Fiber Arts Rep



Shana Lane  
505-270-6442

### Photographer



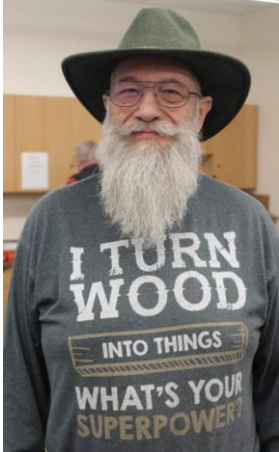
Nancy Matteson  
[gallery@nmwoodturners.org](mailto:gallery@nmwoodturners.org)  
801-694-6866



## Mentors

### Bill Zerby

505-263-6632  
Rio Rancho – NM  
528 & Southern



Basic spindle turning  
& tool sharpening

### Scott Kershaw

406-274-2931  
Rio Rancho –  
Unser & Westside



Basic woodturning skills to  
include bowls, plates, platters,  
spindle projects; Green wood  
processing, coring and twice  
turning; Tool sharpening and  
lathe maintenance

### Hy Tran

505-459-8132  
Albuquerque –  
Paseo & Ventura



Beginner and Novice  
woodturning

### John Ellis

505-463-7750  
Placitas



Basic turning, plates,  
tools & handles

### Larry Linford

505-870-1601  
Albuquerque



Basket illusion turning  
and embellishment

### Bob “Rocky” Rocheleau

505-235-9002  
Albuquerque – NE Heights



Segmenting and bowl  
turning

**Free to NMWT members: give a Mentor a call!**

**\*\*\*WE ARE ALWAYS SEEKING NEW MENTORS\*\*\***

## Mentors

### Rick Judd

612-280-8300  
East Mountain



Hollow forms, bowls,  
lidded boxes, burls,  
natural edge

### Ron Bahm

505-881-8845  
Albuquerque – NE  
Heights



Pen turning, beginning  
segment construction,  
beginner woodturning

### Ray Davis

505-221-4622  
Rio Rancho, NM – NW side  
[raylindavis@r-davis.com](mailto:raylindavis@r-davis.com)



Open and closed Segment  
bowls. Stave Bowls, Bowl  
turning. Pens.

I have a heated and a/c shop  
with 2 lathes ready to go.

### Don Roden

763-234-5780  
Dovetail Workshop



Skew, carbide tools,  
bowls and advanced  
turning techniques, like  
epoxy turning, finials, and  
offset turning

### YOUR NAME

Your phone #  
Your location



What can you offer?  
Help us fill this space

### YOUR NAME

Your phone #  
Your location



What can you offer?  
Help us fill this space

**Free to NMWT members: give a Mentor a call!**

**\*\*\*WE ARE ALWAYS SEEKING NEW MENTORS\*\*\***

# Quick Reference List

(Printer Friendly Version)

## 2022 NMWT Elected Officers, Directors & Committee Chairs


[news@nmwoodturners.org](mailto:news@nmwoodturners.org)

President	Tom Durgin	505-688-1369	Newsletter Editor	Help Needed	
Vice President	Larry Linford	505-870-1601	Newsletter Designer	Traci Durgin	
Treasurer	Woody Stone	828-808-7876	Photographer(s)	Nancy Matteson	801-694-6866
Secretary	Sally Breeden	505-352-0159	Raffle Coordinator	Dean Cross	575-644-8945
State Fair	Bill Mantelli	505-400-0266	Fiber Arts Rep	Shana Lane	505-270-6442
Membership	Tom McLarty	505-298-3790	Equip/Workshops	Scott Eckstein	505-270-0516
Webmaster	Dave Stein	505-266-0356	Green Wood	Help Needed	
Lead Video	Derek Roff	505-438-1820	Green Wood	Joe "Stretch" Cole	480-216-3580
Email Administrator:	Hy Tran	505-459-8132	Logistics	Bob Rocheleau	505-235-9002
Member-at-Large	Mark Miller	505-350-8584	Special Workshops	John Ellis	505-463-7750
Past President	Rick Judd	612-280-8300	Apparel Manager	Dave Croxton	505-803-5221

## Quick Reference List for Mentors

Free to NMWT members: give a Mentor a call!

Bill Zerby Rio Rancho – NM 528 & Southern	➡	505-263-6632	➡	Basic spindle turning & tool sharpening
Hy Tran Albuquerque – Paseo & Ventura	➡	505-459-8132	➡	Beginner and novice woodturning
Don Roden Dovetail Workshop	➡	763-234-5780	➡	Skew, carbide tools, bowls and advanced turning techniques, like epoxy turning, finials, and offset turning
Larry Linford Albuquerque	➡	505-870-1601	➡	Basket illusion turning and embellishment
Rick Judd East Mountain	➡	615-280-8300	➡	Hollow forms, bowls, lidded boxes, burls, natural edge
Ron Bahm Albuquerque – NE Heights	➡	505-881-8845	➡	Pen turning, beginning segment construction, beginner woodturning
Bob "Rocky" Rocheleau Albuquerque – NE Heights	➡	505-235-9002	➡	Segmenting and bowl turning
Ray Davis Rio Rancho – NW side.	➡	505-221-4622	➡	Open and closed Segment bowls. Stave Bowls, Bowl turning. Pens.
Scott Kershaw Rio Rancho – Unser & Westside	➡	406-274-2931	➡	Basic woodturning skills to include bowls, plates, platters, spindle projects; Green wood processing, coring and twice turning; Tool sharpening and lathe maintenance.

Members are always welcome to contact the people on the mentor list for guidance to better turning ideas and techniques

\*\*\*WE ARE ALWAYS SEEKING NEW MENTORS\*\*\*

## Membership Renewal

### Membership Dues

Membership dues renewals are due on or before the last day of the month in which the member's current membership term expires. Members who do not renew within thirty (30) days after their membership expiration date will no longer have access to member privileges and will no longer receive the monthly newsletter. Annual dues are as follows:



One year: \$30 for an individual; \$35 for a family  
Two Years: \$55 for an individual; \$65 for a family  
Three Years: \$75 for an individual; \$90 for a family  
Lifetime: \$300 for an individual; \$350 for a family

### Additional Fees

1. An individual member who subsequently adds family members will pay the difference between the individual dues and the family dues rate for the remainder of that membership year (i.e., a one-year individual member adding family members would pay an additional \$5.00 dues for the remainder of the membership year).
2. A member requiring a mailed copy of the monthly newsletter will pay an additional \$10 per year to cover cost of mailing.

### Renew Online

We are very pleased to announce that you can now pay your membership dues with a credit card on the NMWT website at:

<https://www.nmwoodturners.org/>.

To access online dues payment, simply go to the new "Membership" tab near the top of the homepage and select "Pay Online" from the drop-down menu. This will take you to a secure website managed by Converge, our credit card service provider. There you will find a series of "Buy Buttons" that are clearly labeled with each membership dues option. Simply select the dues option that you want and then hit the "Checkout" button.

You will need to fill in all of the contact information on the payment processing page so that the Treasurer can confirm that our membership records are up to date and also so that he can send your new membership card by regular mail. Also, due to some reporting limitations of the Converge website, you will need to once again select the dues option you want from the drop-down menu labeled "Items Purchased". Fill in your credit card information and hit the "Submit Payment" button to complete the transaction. You should receive an "Order Confirmation" with full details of your purchase by e-mail, and the Treasurer will mail your membership card to you. That's all there is to it!

[Web-Based Credit Card Dues Payment Now Available](#)

### Renew by Mail

You can, of course, still mail a check along with current contact and e-mail information to our **Treasurer, Woody Stone, at 2 Blue Corn Ct. Sandia Park, NM 87047.**

The easy way to do that is to go to that same new "Membership" tab on the NMWT homepage and select "Membership Form" from the drop-down menu.

Fill in the form (**PLEASE PRINT CLEARLY**) and mail it to Woody with your check. Should you have any issues or questions regarding the new Credit Card payment system or if you are not sure if your membership expires at the end of 2020, feel free to call Woody at 828-808-7876 or e-mail him at [eesphoto492@gmail.com](mailto:eesphoto492@gmail.com).



Scan our QR code to access our webpage





## How to Contribute to High Desert Turning

The NMWT's newsletter editor has submitted High Desert Turning to the AAW's 2020 and 2021 Best Chapter Newsletter Contest. Unfortunately for the NMWT, High Desert Turning has not been selected in the top 3 chapters either year. However, the NMWT chapter website won 1<sup>st</sup> prize in 2020 for the Best Chapter Website Contest. So, we know it's possible to rank highly among the numerous chapters of the AAW. Much of the website content can be found in High Desert Turning.

**So, now you ask, "What is in it for me?" Well, we will get to that. But first, our ask is this:**

Submit a short snippet, article or outline of a shop tip or trick you use. You'll be surprised by how many folks will benefit from your personal idea or solution. Take 2, 3, 4 or 5 photos of your process, pieces or how your tip or trick comes together to illustrate how the membership can implement your idea in their shop. If appropriate, share credit where credit is due should you have benefited from a social media post, YouTube video or viewing an in-person demonstration.

**Please consider contributing to the NMWT newsletter High Desert Turning! No tip too elementary and no trick too simple will go unpublished. We count on you to make our newsletter awesome. Please send your contribution to [news@nmwoodturners.org](mailto:news@nmwoodturners.org)**

### Here's what's in it for you:

You are inspiring dozens upon dozens of other turners implement shop solutions that ease their way and improve their flow and turning. You have ideas and solutions that many folks likely envy and would benefit from knowing. There's gratification in uplifting fellow turners.

The club has a large tote of exotic, seasoned and figured timber that was acquired during lockdown and you will be free to select a piece of your choice for every published tip or trick. The tote has wonderful turning stock and you can rifle through it for your choice.

## NMWT's Logo Apparel

Caps (Baseball)	\$15
Long Sleeve Denim Shirt	\$30
Short Sleeve Denim Shirt	\$30
Short Sleeve Snap Shirt	\$30
Polo (golf) Shirt w/Pockets	\$30
T-Shirt V-Neck	\$20
Smocks	\$50

### Items include embroidered NMWT logo

Names embroidered on shirts are additional \$5.00. Sizes XXL, 3XL, 4XL and up are an additional \$3.00.

Contact: [info@nmwoodturners.org](mailto:info@nmwoodturners.org)

Get order forms at the club meetings or use the links below to access the order forms. Once completed, turn your form in to a board member with payment. *Orders are submitted on a quarterly basis.*

Full payment for an order will need to be submitted with each order form before it can be processed! Order placement cut off dates for each quarter will be as follows:



### Order Info

### NMWT Shirt/Cap Form

### NMWT Smock Order Form

Quarter	Months	Order Meeting	Delivery Meeting
1st	Jan-Mar	Feb	Mar
2nd	Apr-Jun	May	Jun
3rd	Jul-Sept	Aug	Sept
4th	Oct-Dec	Nov	Dec

## Discount & Rebate Partners



**CRAFT SUPPLIES USA**  
THE WOODTURNERS CATALOG

[www.woodturnerscatalog.com](http://www.woodturnerscatalog.com)

CSUSA offers a discount to members on large orders and has a club support program. Visit the web site or phone Kathy Lawrence at 1-800-551-8876

# DAKOTA

## Dakota Hardwoods -

Albuquerque, NM

3700 Singer Blvd. NE, Suite A, Albuquerque, NM 87109

Office: 505-644-WOOD (9663)

Monday-Friday: 8:00am - 5:00pm

Saturday-Sunday: Closed

Say you are with the NMWT for a discount.

# Penn State Industries

your wood turning & dust collection source | 1-800-377-7297

[www.pennstateind.com](http://www.pennstateind.com)

Register as a member of New Mexico Woodturner at Penn State Industries and automatically get 10% off (in addition to most other promos) your entire order !!! Yes! In effect, you will be doubling dipping on the discounts!!!

Register by sending an email to [hy.d.tran@gmail.com](mailto:hy.d.tran@gmail.com) with the name, address and email to which your Penn State catalogs are sent. Once you're registered, you'll automatically get 10% off every time you shop online (not applicable to phone or mail orders).

(505) 924-2270

# RUGBY®

Architectural Building Products

NMWT members receive Wholesale Prices. Rugby's has hardwoods, Thermofused Melamine, plywood, veneers, and furniture grade pine.



## DENDROTECHNOLOGY

TIN SHED MILLWORKS

(505) 980-6161 [www.dendrotsm.com](http://www.dendrotsm.com)

### LIVE EDGE SLABS, TURNING BLANKS, CUSTOM MILLING

We offer 10% off our listed prices to members and give a free item from our oddments box or a turning blank to first time member customers.



**8100-M4 Wyoming Blvd. NE, #188  
Albuquerque, NM 87113**

---

---

---