



# High Desert Turning

You're gonna love the way you turn.

You can do this. We guarantee it!

Membership details found within [www.nmwoodturners.org](http://www.nmwoodturners.org)



## NMWT's Upcoming Monthly Meeting

**Club Meetings are generally held 10:00 am to 12:30 pm on the first Saturday of the month**



**Who:** Ron Bahm & Dennis Cahill

**Topic:** Holiday Ornaments

**When:** Oct 7<sup>th</sup> @ 10:00 am MT

(In-person and online demo – Zoom session opens at 9:30 am)

**Where:** North Domingo Baca Multigenerational Center  
7521 Carmel NE Albuquerque, NM 87113

**Please see next page for more information  
regarding guest speaker(s)**

## President's Turn

**A u t h o r : T o m D u r g i n**

Greetings Fellow Woodturners,

If you are reading this you survived the State Fair. That sure makes for a busy time for many of us, working last minute to get that fair entry piece finished up. Brushing up on your smile, your bedside manner as kids and people walk past the lathes at the fair, what a great time! If you didn't demo at the fair, you missed out big time. I've tried before to put into words how awesome it is making a kid's day with a top turned just for them, but you really have to feel that joy in person.

Now we move onto Balloon Fiesta, not our event, but it signals fall is here for sure. Time to check the heater in your shop, buy the propane or the fuel you need and be ready. Fall means Christmas is on the way and if you are anything like me you are not ready. There are gifts to make, ornaments to make, way more than seems I'll ever be able to get finished.

You are a member of one of the top woodturning clubs anywhere. You know how we got that way? We got that way from your participation, give some time, once a month take an active role in your turning club. I'm looking forward to seeing more of you helping keep this club going strong.

Go make some shavings, it is therapy of the best kind!

See you soon, Saturday Oct 7th. You know those ornaments you need to make, this meeting is all about how.

**Want to be more active in NMWT, let us know. We want you to play a part in what this club does, who this club reaches and advancing turners from every skill level. Lend a hand, you won't be sorry.** Tom Durgin



Thomas Durgin - President



## NMWT's Upcoming Monthly Meeting



A u t h o r :   L a r r y   L i n f o r d

The October club demonstration

You wouldn't know if by the weather, but it's already October, and that can mean only one thing: the holidays are just around the corner. But we have a little time before the gift-giving and decorating season, so we can still produce some shop-made ornaments and gifts out of our shops. So for this month's demo, we're going to learn to make some holiday decorations – and not just those that hang from a tree. Doing this in October will give us adequate time – a couple of months – to put the learning to good use for decorating your own home and/or making small seasonal gifts (that can become heirlooms) for friends and relatives.

And we will again rely on a team effort. Ron Bahm will tell us how to make several popular ornaments, including the mystical "inside-out" decorations that are hollowed with windows that expose smaller ornaments contained inside. This segment will be of a "question and answer" session including some discussion on finial turning.

Dennis Cahill will demonstrate his lathe-turned Nativity or creche scenes. He showed one of these in an Instant Gallery earlier this year, complete with an array of wooden figures. This segment will include sample turning.

This demo should have something for everyone.

### Future Programs/Activities

<b>Nov 4<sup>th</sup></b>	Michael Mocho	Design concepts
<b>Dec 2<sup>nd</sup></b>	Club Members	Gift Exchange & 2024 Planning
<b>Jan 6<sup>th</sup></b>	TBD	TBD

#### NMWT Monthly Board Meeting

**Open to all Members**

**When: Oct 25<sup>th</sup>, 2023 @ 7:30 pm**

Contact [info@nmwoodturners.org](mailto:info@nmwoodturners.org) or  
any board member for more info or  
the Zoom link

#### \*\*\* Attention Members \*\*\*

Club dues increase starting 1 Nov 2023. Renew now to get the current price \$25, soon it will be \$30 a year. You can renew online, check out our web page. Questions? Ask us at [info@nmwoodturners.org](mailto:info@nmwoodturners.org)

## Reflections from Last Month



### L i d d e d   B o x e s

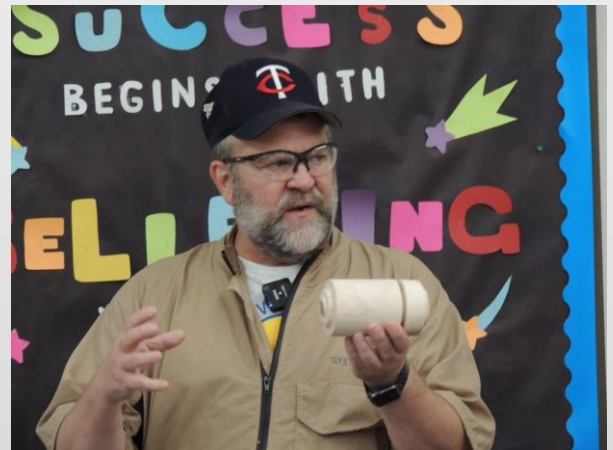
A u t h o r :   T o m   D u r g i n

Last month's demonstration was focused on making lidded boxes. Although lidded boxes can encompass many pieces include decorative items and many elements are common between boxes for decoration and for daily use.

The demo started with a short discussion of the required safety equipment needed when making lidded boxes or doing any turning. Eye protection always, a face shield and lung protection anytime you are making dust. The chips and shavings are not what you need to worry about, but the small particles floating around in the air love to get in and settle in your lungs. The most important part of turning is being safe as you turn.

Wood selection was the next point of discussion and how to choose your wood based off your intended final piece. Dried blocks of domestic or exotic wood can be used for those really special pieces, but my favorite is branches. Branches are everywhere, just look out your window. You can see them laying on the ground, piled up near the street for pickup and the most neglected pieces when we are giving away a truck load of wood at one of our monthly meetings. End grain boxes from branches offer so much variety, you'll be pleasantly surprised. Don't forget, the wood needs to be dry, the lid fit can never be properly done with a piece of wood that is still moving due to moisture loss.

One of the great things about deciding to make these boxes from branches is you don't know a bunch of fancy saws to prepare your blank. You need a branch slightly larger than the diameter you are wanting (or just use what you have and let the available branch determine your diameter), if you have a bandsaw to cut it on great, if not you can use virtually any saw including that exercise machine, the handsaw.





## Reflections from Last Month



### L i d d e d   B o x e s

A u t h o r :   T o m   D u r g i n

Besides your lathe, you'll need an appropriate drive center and the live center of your choice. Once it is round, a tenon is made on both ends (be sure to leave those center marks to ease future alignment). A chuck (or one for the top and one for the bottom if you have two) is the easiest way to hold this work. Because there is waste on either end of the blank these can also be made using face plates. Obviously, your favorite turning tools will be needed, spindle gouges, bowl gouges and other items such as parting tools. A jam chuck (8/4 Poplar is great) and painter's tape are other items that will very much help you make wonderful lidded boxes.

Then the steps or order of steps to do the turning was covered. Make the blank round, choose which end is top and which is bottom. Part off the top and hollow out the bottom followed by hollowing out and properly fitting the top. Once those steps are complete it is time to final shape the box. After final shaping you use your painter's tape to hold things together, finish off the top, put in an insert (if desired). All that remains is taking off the tenon on the bottom and finishing the box.

Final thoughts that you'll want to think over before you start and keep in mind through the whole process. How deep should the box be? Will fingers reach the bottom or the contents stored in the box? Do you want to square off the inside of the box, that kind of makes it hard to slide contents up the side with your fingers. How should the lid fit? For a box that's going to get used, loose enough to get off with one hand yet tight enough to not be sloppy. Now go make lidded boxes, they are useful and enjoyed.





## Silent Auction

C o n t a c t : N M W T T r e a s u r e r

We love to have nifty items or pieces of timber that can be auctioned at our next meeting to support the Scholarship Fund.

Potential ideas include rough turned bowls, gouges gathering dust, seasoned blanks or turning accessories.

Your contributions go to benefit the **Red Hollenbach Scholarship Fund** which is used to reduce the cost for members to attend professional demonstrator's hands-on sessions.



If you are seeking an handcrafted donation for your charitable organization, please email a request to: [info@nmwoodturners.org](mailto:info@nmwoodturners.org)

## NMWT on Social Media



### The New Mexico Woodturners are on Facebook and YouTube



Facebook is just one way to share your work. However, it's also a great platform to ask questions, request constructive criticism and rub shoulders with other turners.

Various members of the NMWTs moderate the social media accounts and promote the craft and our club actively on these outlets.

A number of the Facebook group members are not NMWT members and that's okay! However, by our NMWT membership being active on social media we can also share the benefits of club membership, promote club activities and foster relationships with turners around the globe.

Please join the Facebook group, subscribe to the YouTube channel and watch us grow turning!

## Newsletter Submission

Got a great idea, tip, or trick that you'd like to share?

**We'd like to read about it.**

### What do you need to do?

Write up a description, brief or in-depth, and include a few photos if possible to better detail your idea.

If you like or use a certain webpage or a YouTube channel, please write about and site your source.

Please send articles to [news@nmwoodturners.org](mailto:news@nmwoodturners.org)

Disclaimer: Articles submitted aren't guaranteed a spot in the next issue, but they will be published if educational criteria is met and as it fits organizational needs.



Newsletter

**Submission**

Deadline

O

c

t

23<sup>rd</sup>

## Green Wood

The Green Wood Committee is always on the hunt for greenwood, and we all can agree, woodturners hate to see any good pieces go to a landfill. If you have some greenwood to share, please contact either chair member below for coordination. Our members love greenwood and there are endless possibilities and projects that can be done with it.



## Green Wood Chairs

Joe "Stretch" Cole

480-216-3580

[jt.cole@hotmail.com](mailto:jt.cole@hotmail.com)

Help Needed

## Beads of Courage – NMWT's 2023 Challenge

**Our Challenge and Goal:** **For each club member to take the time and heart to make at least one Beads of Courage Box during 2023**

### What is Beads of Courage?

Beads of Courage (BOC) is the NMWT's Community Service Project.

Beads of Courage, Inc. is a 501 (c) (3) tax exempt organization working in partnership with the American Association of Woodturners (AAW).

[Official Guide to Beads of Courage – Woodturners Wanted](#)

### This is Local!

Our Beads of Courage Bowls are taken directly to UNMH Children's Cancer Facility here in Albuquerque for local patients. However, some bowls can also be sent to a National collection point in Tucson, Arizona.

UNMH Children's Cancer Facility has been treating nearly one hundred seriously ill cancer youngsters each year. For each medical treatment a child receives, he or she gets a bead which they can then keep in their bowl, hence Beads of Courage Bowls. The children do receive a bag to put their beads in, but a Beads of Courage Bowl is far more special and reflective of the hard work to beat cancer!

**NMWT currently produces approximately 8 bowls a year and it would be great to see that number increase exponentially.**

For more information regarding the program, where to purchase beads, or where to deliver your finely crafted bowl, please see:



BOC Website



## BOC Chair / Contacts

Scott Eckstein (NMWT BOC Contact)

505-270-0516

[seemee911@gmail.com](mailto:seemee911@gmail.com)

Brianna Hayes (UNM Certified Life Specialist)

505-991-8501

[bnhayes@salud.unm.edu](mailto:bnhayes@salud.unm.edu)

Abby Walker (UNM Certified Life Specialist)

505-991-8501

[abCWalker@salud.unm.edu](mailto:abCWalker@salud.unm.edu)

# Women in Turning



A u t h o r : P a t r i c i a A p t

Fall has arrived and the days and nights are getting cooler. This makes for more comfortable working conditions in the garage, allowing for more time on the lathe. With the holidays just around the corner it's a great time to start working on those holiday ornaments.

After a short summer hiatus, the local WIT (Women in Turning) chapter will be meeting Sunday, October 15<sup>th</sup>, at Dovetail Community Workshop at 1:00 pm. The subject will be turning holiday ornaments. There are endless possibilities for the variety of ornaments that can be turned on the lathe.

We'll look at some of these but we'll narrow our focus to ornaments that require only basic spindle turning techniques and offer a good opportunity to improve basic skills.



(Continued on the next page)

**What we offer is access to the AAW site and wonderful monthly magazine, and a group of engaged and enthused turners!**

## Join the private

[Facebook](#) group page [Women in Turning](#) to get ideas & support. AAW membership is not required.

## Women in Turning (WiT) -- The

AAW strives to deliver the publications and services that our members need to grow, connect, explore, and thrive in the areas of woodturning that are important to them.

[Guest Membership](#)

**ALSO – join the AAW with a guest membership** so you can see what else WiT and AAW

By signing up for a complimentary Guest membership, you can have access to AAW resources for a full 60 days. You will be able to explore what the AAW has to offer, kick our tires, and hopefully decide to become a full-fledged, paid AAW member to benefit from everything the AAW has to offer.



## L o c a l W i T C o n t a c t s

Patricia Apt (NMWT's WiT Liaison)

505-401-4442

[papt625@gmail.com](mailto:papt625@gmail.com)

Nancy Matteson

801-694-6866

[namatteson@hotmail.com](mailto:namatteson@hotmail.com)

Kay Grant

661-599-1832

[wykayg@gmail.com](mailto:wykayg@gmail.com)

Erin Perry O'Donnell

505-926-1693

[erin@dovetailworkshop.com](mailto:erin@dovetailworkshop.com)



## Women in Turning



A u t h o r : P a t r i c i a A p t

The meeting will start with a short demonstration turning Christmas trees and snowmen. Then there'll be some hands-on practice, with attendees making their own ornaments. The meeting time is only 3 hours and given the time constraint we may not end up with completed projects. But the purpose of the meeting is to improve our skills, exchange ideas, share our creative processes and learn from each other new possibilities for woodturning.

By coincidence, Christmas ornaments are the subject of the NMWT club demonstration on October 7<sup>th</sup> at North Domingo Baca. There may be some redundancy in demonstrations but the WIT meeting is more interactive and should not conflict with the club demonstration.

All NMWT members are welcome to attend WIT meetings.



## Women in Turning

Try out an American Association of Woodturners (AAW) membership for 3 months!!

**We know you will be hooked!**

### AAW Membership Application

WIT (Women in Turning) is “dedicated to encouraging and assisting women in their pursuit of turning, sharing ideas and processes to further member’s skills and creativity, and increasing participation of women in the field of woodturning.”

The AAW WIT Committee agrees that to further this mission, we can work with chapters to help grow the number of women in AAW. Currently, women comprise less the 9% of AAW membership.

**To encourage women to join AAW, the WIT Committee offers a limited number of WIT sponsored half price AAW memberships to women for a one-year, full "General" AAW membership.**

**Eligibility** To be eligible, a grant recipient must be a woman and who has never previously been a member of AAW.

**Process** Only the chapter AAW WIT Liaison, Patricia Apt, chapter president or vice-president may request the grant. After we’ve received the application, the recipient will be sent a promotional code with instructions on how to use the code in applying for an AAW membership. If you have questions, please email wit@woodturner.org.

### **Limitations**

If the nominee is a new member of a local chapter (within the last two months), WIT will pay 100% of the AAW membership.

If the nominee has been a member of a local chapter for more than two months, WIT will pay 50% of the AAW membership.

If the nominee is not a member of a local chapter, WIT will pay 50% of the AAW membership.

Grants are currently limited to no more than two women, per chapter, per quarter.

Quarters end January 31, April 30, July 31, and October 31. Based on the number of requests, this limitation may change.

**We hope that this offer will be an incentive for new women woodturners to join your chapter.**

**[Click Here for AAW Specials for WIT](#)**



## Beginner's Turn



## What's the Rush

A u t h o r : S t e v e J o h n s o n

One of the observations that I have made over and over in woodturning is this obsession with how fast a project can be completed, how fast a turner can go from a block of wood to turned masterpiece. How fast can a turner use a tool. For example, someone the other day told me that they could turn a top in 5 swipes of a bowl gouge, Vowala!! Poof!! You're done!! Y-Tube is 99% full of turning videos where the actual turning is presented in anywhere from 2x mode to 10x mode. The entire massive project takes 10 seconds to turn, all for the sake of "viewing". So what?

*What Is The Rush* people? Is everyone in the world who owns a lathe a professional turner who makes a living on how many bowls they can turn in an hour? Does it really matter that much to those of us who aren't?

I would say "No" to all of the above. I am not a professional turner. I don't make money doing this. But I still find myself getting into the mode of rushing around all the time I am in my shop. Why? Maybe because for 12 years of my life I was responsible for crushing schedules etc. etc. No excuse now that I am retired.

Speed kills they say in the automotive world. I would suggest that speed can lead to bad happenings in woodturning. Accidents happen when rushed. Wood turning at 60 miles an hour, two feet from your face can do serious damage. It can be expensive as well given how much you just put down for that beautiful 12 in. exotic bowl blank you just flung across the shop and cracked into little pieces just because you were in a rush and forgot to tighten the chuck properly.

I find that if I would just slow down a little, look around, see what I am actually doing, think about how I am doing it, I would enjoy the entire creative experience of woodturning a lot more. I wouldn't be so anxious, I would stress out less over catches and mistakes and maybe, just maybe, my projects would turn out better for the rest of the world to enjoy!! And me to be satisfied with.

Remember, we are here to ***enjoy what we are doing!!*** And,

***"Have fun with your lathe"***



## Photo Gallery



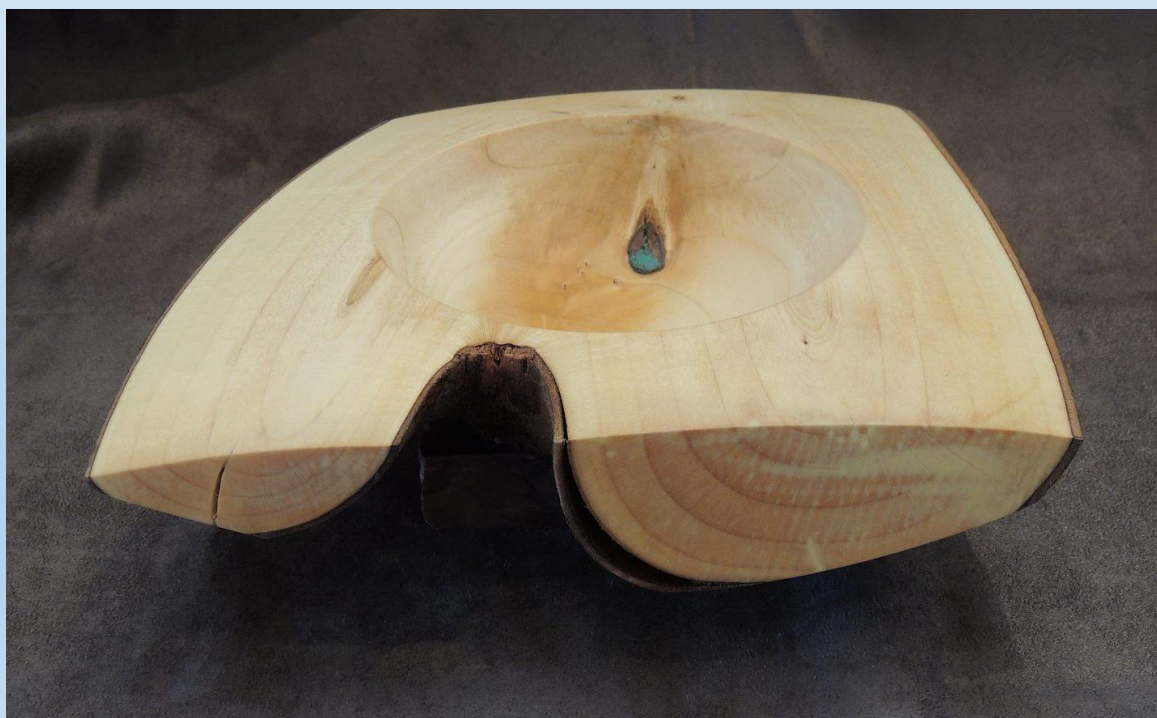
### Instant



JoAnne Smith Black Bowl



Tom Durgin Mulberry  
Miniature Plate



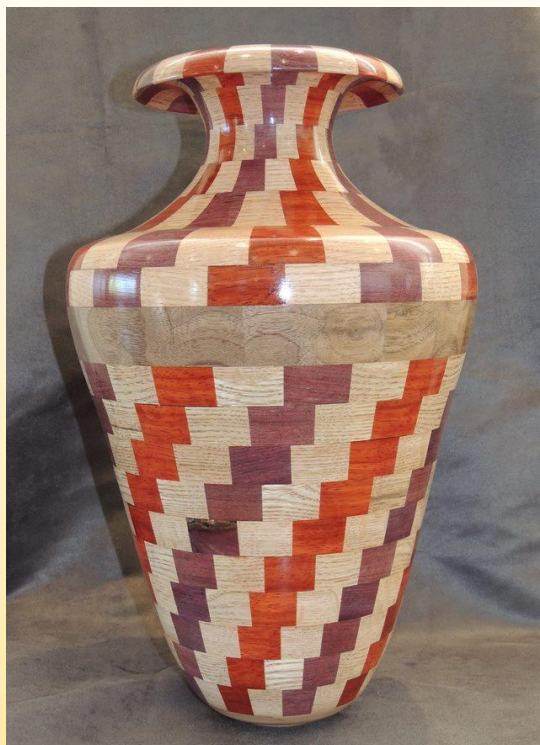
Scott Ecksten Maple Crotch with Inlay

Please send gallery photos by the 3<sup>rd</sup> Saturday of the month to  
[gallery@nmwoodturners.org](mailto:gallery@nmwoodturners.org)

## Photo Gallery



### Instant



James Redstrom Large  
Segmented Vase



Patricia Apt Walnut and  
Wildhorse Jasper



Rex Funk Covered Bowl Cocobolo, Curley Maple

Please send gallery photos by the 3<sup>rd</sup> Saturday of the month to  
[gallery@nmwoodturners.org](mailto:gallery@nmwoodturners.org)



## Photo Gallery



### State Fair Demo



Please send gallery photos by the 3<sup>rd</sup> Saturday of the month to  
[gallery@nmwoodturners.org](mailto:gallery@nmwoodturners.org)

\*These photos can be found in the Galleries section on NMWT's webpage\*



## Photo Gallery



### State Fair Demo



Please send gallery photos by the 3<sup>rd</sup> Saturday of the month to  
[gallery@nmwoodturners.org](mailto:gallery@nmwoodturners.org)

\*These photos can be found in the Galleries section on NMWT's webpage\*



## Photo Gallery



### State Fair Demo



Please send gallery photos by the 3<sup>rd</sup> Saturday of the month to  
[gallery@nmwoodturners.org](mailto:gallery@nmwoodturners.org)

\*These photos can be found in the Galleries section on NMWT's webpage\*



# Photo Gallery



## State Fair



Scott Eckstein Segmented Bowl



Larry Linford Hickory Platter



Ron Bahm Box



Ray Davis Walnut Bowl

Please send gallery photos by the 3<sup>rd</sup> Saturday of the month to [gallery@nmwoodturners.org](mailto:gallery@nmwoodturners.org)



# Photo Gallery



## State Fair



Tom Durgin Walnut Box



Larry Linford Cherry Carved Bowl



Larry Linford Sycamore Hollow with Pyrography



Scott Eckstein Various Segmented Bowl

Please send gallery photos by the 3<sup>rd</sup> Saturday of the month to [gallery@nmwoodturners.org](mailto:gallery@nmwoodturners.org)

# Photo Gallery



## State Fair



Tom Durgin Cherry Vase



Bob Rocheleau Various Segemented



Patricia Apt Miniature



Ron Bahm Miniatures

Please send gallery photos by the 3<sup>rd</sup> Saturday of the month to [gallery@nmwoodturners.org](mailto:gallery@nmwoodturners.org)



# Photo Gallery



## State Fair



Tom Durgin Cherry Ornament



Bill Mantelli Bottle Stopper



Bob Rocheleau Segmented Vase



Tom Durgin Bottle Opener

Please send gallery photos by the 3<sup>rd</sup> Saturday of the month to  
[gallery@nmwoodturners.org](mailto:gallery@nmwoodturners.org)

## Photo Gallery



### State Fair



Wayne Silva Lost Over  
New Mexico



Rex Funk Spiral Hollow  
out of case



Don Roden Walnut Bowl



Tom Durgin Minature Bowl

Please send gallery photos by the 3<sup>rd</sup> Saturday of the month to  
[gallery@nmwoodturners.org](mailto:gallery@nmwoodturners.org)



## Photo Gallery



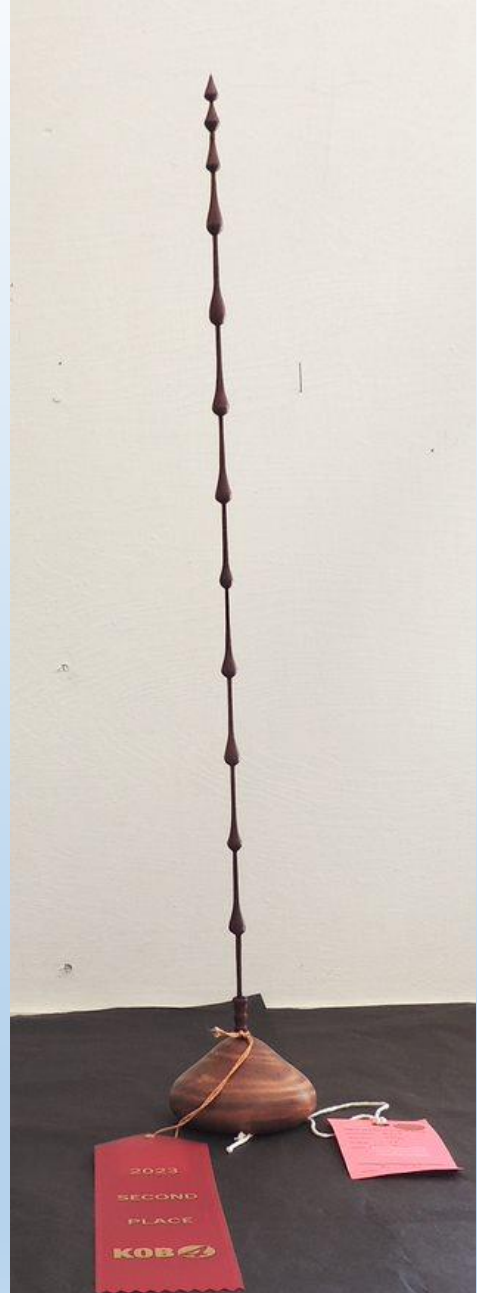
### State Fair



Tom Durgin Mini Box



Rex Funk Goblet



Don Roden Long Finial

Please send gallery photos by the 3<sup>rd</sup> Saturday of the month to  
[gallery@nmwoodturners.org](mailto:gallery@nmwoodturners.org)

# Photo Gallery



## State Fair



Tom Durgin Mini Goblet



Tom Durgin Mini Teapot



Woody Stone Banksia Vase



Ray Davis Segmented Bowl

Please send gallery photos by the 3<sup>rd</sup> Saturday of the month to  
[gallery@nmwoodturners.org](mailto:gallery@nmwoodturners.org)



## Photo Gallery



### State Fair



Dean Graves Segmented Bowl



Tom Durgin Mesquite Hollow



Ray Davis Best in Show



Ray Davis Segmented Sail Away

Please send gallery photos by the 3<sup>rd</sup> Saturday of the month to  
[gallery@nmwoodturners.org](mailto:gallery@nmwoodturners.org)

# Photo Gallery



## State Fair



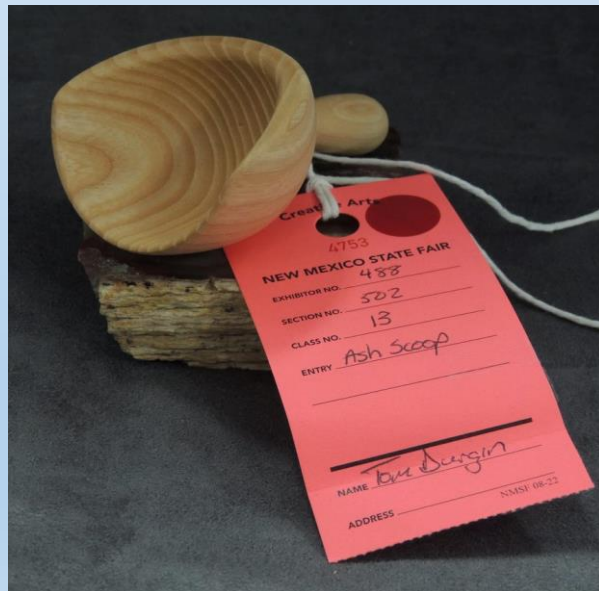
Bob Rocheleau  
Cedar Lamp



David Croxton Dyed Hickory Bowl



Larry Linford Spiral  
Vase



Tom Durgin Scoop Ash

Please send gallery photos by the 3<sup>rd</sup> Saturday of the month to  
[gallery@nmwoodturners.org](mailto:gallery@nmwoodturners.org)



# Photo Gallery



## State Fair



Rex Funk Hollow form  
with Birds



David Croxton Hickory Bowl



Alex Rivera Segmented  
Bowl



David Waldrep Buckeye Bowl

Please send gallery photos by the 3<sup>rd</sup> Saturday of the month to  
[gallery@nmwoodturners.org](mailto:gallery@nmwoodturners.org)

# Photo Gallery



## State Fair



Patricia Apt Mini  
Cedar Seed Pot



Woody Stone Alligator  
Juniper Bowl with Inlay



David Croxton Platter



Cindy Edgecomb Black Limba  
Bowl

Please send gallery photos by the 3<sup>rd</sup> Saturday of the month to  
[gallery@nmwoodturners.org](mailto:gallery@nmwoodturners.org)



# Photo Gallery



## State Fair



Ron Bahm  
Segmented Box



David Waldrep Box Elder Bowl with  
Inlay



Tom Durgin Poplar  
Spoon



Larry Evans Mulberry Hollow Form

Please send gallery photos by the 3<sup>rd</sup> Saturday of the month to  
[gallery@nmwoodturners.org](mailto:gallery@nmwoodturners.org)



# Photo Gallery



## State Fair



Ron Bahm Bowl with  
Pyrography



David Hinchcliffe Purple Heart  
Hex Bowl



David Croxton Salt and Pepper  
Shakers



David Croxton Chaco Style  
Best of Show

Please send gallery photos by the 3<sup>rd</sup> Saturday of the month to  
[gallery@nmwoodturners.org](mailto:gallery@nmwoodturners.org)

## Photo Gallery



### State Fair



Woody Stone Elm Closed Form with Inlay



Dean Graves Segmented Bowl



Bill Mantelli Cherry Bowl



David Waldrep Box Elder Burl with Inlay

Please send gallery photos by the 3<sup>rd</sup> Saturday of the month to [gallery@nmwoodturners.org](mailto:gallery@nmwoodturners.org)



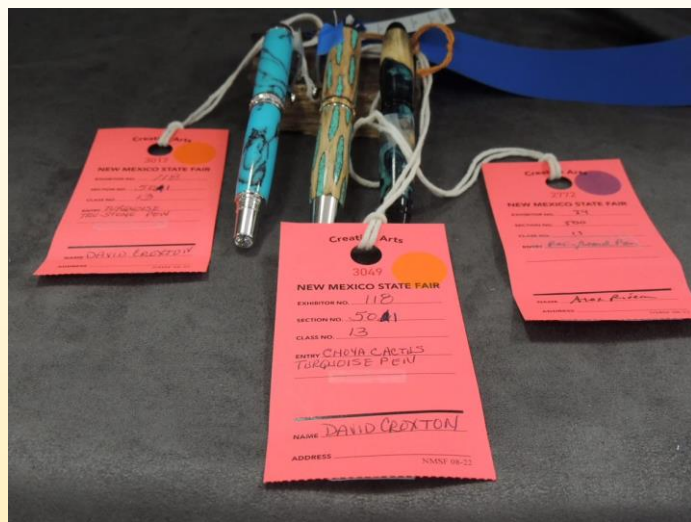
# Photo Gallery



## State Fair



Cindy Edgecomb  
Persimmon Bowl



David Croxton Turned Pens



Larry Linford Covered Hollow  
Form Walnut



David Croxton Basket Illusion  
Platter

Please send gallery photos by the 3<sup>rd</sup> Saturday of the month to  
[gallery@nmwoodturners.org](mailto:gallery@nmwoodturners.org)



# Photo Gallery



## State Fair



Hy Tran Olive Walnut Lidded Box



Cindy Edgecomb Walnut Bowl



Woody Stone Russian Olive Closed Form



Woody Stone Mulberry Root Vase

Please send gallery photos by the 3<sup>rd</sup> Saturday of the month to [gallery@nmwoodturners.org](mailto:gallery@nmwoodturners.org)

# Photo Gallery



## State Fair



Larry Linford Walnut Bowl  
with Natural Hole and  
Pyrography



David Stein Fish Bowl Golden  
Heart



David Waldrep Box Elder  
Burl Plate



Ron Bahm Various Segmented

Please send gallery photos by the 3<sup>rd</sup> Saturday of the month to  
[gallery@nmwoodturners.org](mailto:gallery@nmwoodturners.org)



## Photo Gallery



### State Fair



Rick O'Ryan Oak Hollow  
Form



David Waldrep Cherry  
Covered Bowl with Inlay



Bob Rocheleau Bowl Blk  
Walnut



Wayne Silva Pinon  
Segmented Pot

Please send gallery photos by the 3<sup>rd</sup> Saturday of the month to  
[gallery@nmwoodturners.org](mailto:gallery@nmwoodturners.org)

# Photo Gallery



## State Fair



Bob Rocheleau Blk Walnut  
Platter



Cindy Edgecomb Bowl Wormy  
Ash



Bill Gorman Cherry Lidded  
Box



Alex Rivera Lidded Bowl

Please send gallery photos by the 3<sup>rd</sup> Saturday of the month to  
[gallery@nmwoodturners.org](mailto:gallery@nmwoodturners.org)



# Photo Gallery



## State Fair



Tom McLarty Bowl with Inlay



David Waldrep Box Elder with Inlay



David Croxton Basket of Illusion

Please send gallery photos by the 3<sup>rd</sup> Saturday of the month to [gallery@nmwoodturners.org](mailto:gallery@nmwoodturners.org)

## Photo Gallery



### State Fair



David Hinchcliff Alder Bowl with bark inclusion



Woody Stone Natural Edge with Inlay



Dean Graves Various Segmented



David Croxton Pen Cocobolo

Please send gallery photos by the 3<sup>rd</sup> Saturday of the month to [gallery@nmwoodturners.org](mailto:gallery@nmwoodturners.org)



## Photo Gallery



### State Fair



Don Roden Hollow Form PangaPanga Textured  
Mouth

Please send gallery photos by the 3<sup>rd</sup> Saturday of the month to  
[gallery@nmwoodturners.org](mailto:gallery@nmwoodturners.org)

\*These photos can be found in the Galleries section on NMWT's webpage\*

## Marketplace

### Title of Your Ad Here

Description of your Ad

Picture of your  
Advertisement

Contact info for your Ad

### Rough-Turned Bowls for Sale

David Hallman has hundreds of rough-turned bowls, in various woods, including cherry, china berry, walnut, sycamore, mimosa, sassafras, and mesquite. Some are natural edge (with and without bark), others are cut edge. Sizes range from four inches up to fifteen inches wide, shallow up to six inches tall. Asking one dollar up to twenty five dollars for the larger sizes. Volume discounts. Located in Silver City.

Contact David at (575)654-0299  
or [mesquitedave@gmail.com](mailto:mesquitedave@gmail.com)



### Title of Your Ad Here

Description of your Ad

Picture of your  
Advertisement

Contact info for your Ad

### Bridge for Sale



**This is a sample marketplace posting.**

We welcome members to use this space for anything related to woodturning. There is no charge for listing an item. Ads will run for about one month.

To request a listing, send item and contact info to [sale@nmwoodturners.org](mailto:sale@nmwoodturners.org). Your ad will be reviewed and posted as quickly as possible.

\*\*\* You must be an NMWT member to post ads \*\*\*

See our Marketplace section on our website for better photos



## 2022 Elected Officers, Directors & Committee Chairs

### President



Tom Durgin  
505-688-1369

### Vice President



Larry Linford  
505-870-1601

### Treasurer



Woody Stone  
828-808-7876

### Secretary



Sally Breedon  
505-352-0159

### State Fair



Bill Mantelli  
505-400-0266

### Membership



Tom McLarty  
505-298-3790

### Webmaster



### Lead Video



Derek Roff  
505-438-1820

### Email Administrator



Hy Tran  
505-459-8132

### Member-at-Large



Ron Bahm  
505-881-8845

### Equipment & Workshops Beads of Courage Chair



Scott Eckstein  
505-270-0516

### Logistics



Bob "Rocky" Rocheleau  
505-235-9002

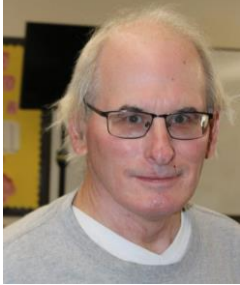
# SEEKING

**Green wood help**

Please speak to a board member regarding any of these positions

## 2022 Elected Officers, Directors & Committee Chairs

### Raffle Coordinator



Dean Cross  
575-644-8945

### Special Workshops



John Ellis  
505-463-7750

### Green Wood Manager(s)



### Green Wood Manager(s)



Joe "Stretch" Cole  
480-216-3580

### Past President



Rick Judd  
612-280-8300

### Newsletter Designer



Traci Durgin  
[news@nmwoodturners.org](mailto:news@nmwoodturners.org)  
505-688-1370

### Apparel Manager



Cindy Edgecomb  
505-615-7307

### Photographer



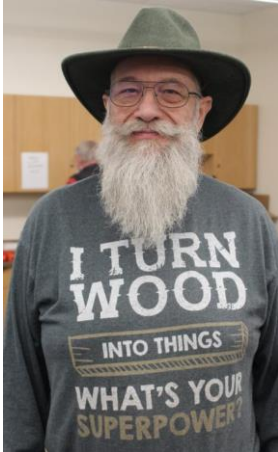
Nancy Matteson  
[gallery@nmwoodturners.org](mailto:gallery@nmwoodturners.org)  
801-694-6866



## Mentors

### Bill Zerby

505-263-6632  
Rio Rancho – NM  
528 & Southern



Basic spindle turning  
& tool sharpening

### Scott Kershaw

406-274-2931  
Rio Rancho –  
Unser & Westside



Basic woodturning skills to  
include bowls, plates, platters,  
spindle projects; Green wood  
processing, coring and twice  
turning; Tool sharpening and  
lathe maintenance

### Hy Tran

505-459-8132  
Albuquerque –  
Paseo & Ventura



Beginner and Novice  
woodturning

### John Ellis

505-463-7750  
Placitas



Basic turning, plates,  
tools & handles

### Larry Linford

505-870-1601  
Albuquerque



Basket illusion turning  
and embellishment

### Bob “Rocky” Rocheleau

505-235-9002  
Albuquerque – NE Heights



Segmenting and bowl  
turning

**Free to NMWT members: give a Mentor a call!**

**\*\*\*WE ARE ALWAYS SEEKING NEW MENTORS\*\*\***

## Mentors

### Rick Judd

612-280-8300  
East Mountain



Hollow forms, bowls,  
lidded boxes, burls,  
natural edge

### Ron Bahm

505-881-8845  
Albuquerque – NE  
Heights



Pen turning, beginning  
segment construction,  
beginner woodturning

### Ray Davis

505-221-4622  
Rio Rancho, NM – NW side  
[raylindavis@r-davis.com](mailto:raylindavis@r-davis.com)



Open and closed Segment  
bowls. Stave Bowls, Bowl  
turning. Pens.

I have a heated and a/c shop  
with 2 lathes ready to go.

### YOUR NAME

Your phone #  
Your location



What can you offer?  
Help us fill this space

### YOUR NAME

Your phone #  
Your location



What can you offer?  
Help us fill this space

### YOUR NAME

Your phone #  
Your location



What can you offer?  
Help us fill this space

**Free to NMWT members: give a Mentor a call!**

**\*\*\*WE ARE ALWAYS SEEKING NEW MENTORS\*\*\***



# Quick Reference List

(Printer Friendly Version)

## 2022 NMWT Elected Officers, Directors & Committee Chairs


[news@nmwoodturners.org](mailto:news@nmwoodturners.org)

President	Tom Durgin	505-688-1369	Newsletter Editor	Help Needed	
Vice President	Larry Linford	505-870-1601	Newsletter Designer	Traci Durgin	
Treasurer	Woody Stone	828-808-7876	Photographer(s)	Nancy Matteson	801-694-6866
Secretary	Sally Breeden	505-352-0159	Raffle Coordinator	Dean Cross	575-644-8945
State Fair	Bill Mantelli	505-400-0266			
Membership	Tom McLarty	505-298-3790	Equip/Workshops	Scott Eckstein	505-270-0516
Webmaster	Dave Stein	505-266-0356	Green Wood	Help Needed	
Lead Video	Derek Roff	505-438-1820	Green Wood	Joe "Stretch" Cole	480-216-3580
Email Administrator:	Hy Tran	505-459-8132	Logistics	Bob Rocheleau	505-235-9002
Member-at-Large	Ron Bahm	505-881-8845	Special Workshops	John Ellis	505-463-7750
Past President	Rick Judd	612-280-8300	Apparel Manager	Cindy Edgecomb	505-615-7307

## Quick Reference List for Mentors

Free to NMWT members: give a Mentor a call!

Bill Zerby Rio Rancho – NM 528 & Southern	➡	505-263-6632	➡	Basic spindle turning & tool sharpening
Hy Tran Albuquerque – Paseo & Ventura	➡	505-459-8132	➡	Beginner and novice woodturning
John Ellis Placitas	➡	505-463-7750	➡	Basic turning, plates, tools & handles
Larry Linford Albuquerque	➡	505-870-1601	➡	Basket illusion turning and embellishment
Rick Judd East Mountain	➡	615-280-8300	➡	Hollow forms, bowls, lidded boxes, burls, natural edge
Ron Bahm Albuquerque – NE Heights	➡	505-881-8845	➡	Pen turning, beginning segment construction, beginner woodturning
Bob "Rocky" Rocheleau Albuquerque – NE Heights	➡	505-235-9002	➡	Segmenting and bowl turning
Ray Davis Rio Rancho – NW side.	➡	505-221-4622	➡	Open and closed Segment bowls. Stave Bowls, Bowl turning. Pens.
Scott Kershaw Rio Rancho – Unser & Westside	➡	406-274-2931	➡	Basic woodturning skills to include bowls, plates, platters, spindle projects; Green wood processing, coring and twice turning; Tool sharpening and lathe maintenance.

Members are always welcome to contact the people on the mentor list for guidance to better turning ideas and techniques

\*\*\*WE ARE ALWAYS SEEKING NEW MENTORS\*\*\*

## Membership Renewal

### Membership Dues

Membership dues renewals are due on or before the last day of the month in which the member's current membership term expires. Members who do not renew within thirty (30) days after their membership expiration date will no longer have access to member privileges and will no longer receive the monthly newsletter. Annual dues are as follows:



One year: \$25 for an individual; \$30 for a family  
 Two Years: \$45 for an individual; \$55 for a family  
 Three Years: \$65 for an individual; \$80 for a family  
 Lifetime: \$300 for an individual; \$350 for a family

### Additional Fees

1. An individual member who subsequently adds family members will pay the difference between the individual dues and the family dues rate for the remainder of that membership year (i.e., a one-year individual member adding family members would pay an additional \$5.00 dues for the remainder of the membership year).
2. A member requiring a mailed copy of the monthly newsletter will pay an additional \$10 per year to cover cost of mailing.

### Renew Online

We are very pleased to announce that you can now pay your membership dues with a credit card on the NMWT website at:

<https://www.nmwoodturners.org/>.

To access online dues payment, simply go to the new "Membership" tab near the top of the homepage and select "Pay Online" from the drop-down menu. This will take you to a secure website managed by Converge, our credit card service provider. There you will find a series of "Buy Buttons" that are clearly labeled with each membership dues option. Simply select the dues option that you want and then hit the "Checkout" button.

You will need to fill in all of the contact information on the payment processing page so that the Treasurer can confirm that our membership records are up to date and also so that he can send your new membership card by regular mail. Also, due to some reporting limitations of the Converge website, you will need to once again select the dues option you want from the drop-down menu labeled "Items Purchased". Fill in your credit card information and hit the "Submit Payment" button to complete the transaction. You should receive an "Order Confirmation" with full details of your purchase by e-mail, and the Treasurer will mail your membership card to you. That's all there is to it!

[Web-Based Credit Card Dues Payment Now Available](#)

### Renew by Mail

You can, of course, still mail a check along with current contact and e-mail information to our **Treasurer, Woody Stone, at 2 Blue Corn Ct. Sandia Park, NM 87047.**

The easy way to do that is to go to that same new "Membership" tab on the NMWT homepage and select "Membership Form" from the drop-down menu.

Fill in the form (**PLEASE PRINT CLEARLY**) and mail it to Woody with your check. Should you have any issues or questions regarding the new Credit Card payment system or if you are not sure if your membership expires at the end of 2020, feel free to call Woody at 828-808-7876 or e-mail him at [eesphoto492@gmail.com](mailto:eesphoto492@gmail.com).



Scan our QR code to access our webpage





## How to Contribute to High Desert Turning

The NMWT's newsletter editor has submitted High Desert Turning to the AAW's 2020 and 2021 Best Chapter Newsletter Contest. Unfortunately for the NMWT, High Desert Turning has not been selected in the top 3 chapters either year. However, the NMWT chapter website won 1<sup>st</sup> prize in 2020 for the Best Chapter Website Contest. So, we know it's possible to rank highly among the numerous chapters of the AAW. Much of the website content can be found in High Desert Turning.

**So, now you ask, "What is in it for me?" Well, we will get to that. But first, our ask is this:**

Submit a short snippet, article or outline of a shop tip or trick you use. You'll be surprised by how many folks will benefit from your personal idea or solution. Take 2, 3, 4 or 5 photos of your process, pieces or how your tip or trick comes together to illustrate how the membership can implement your idea in their shop. If appropriate, share credit where credit is due should you have benefited from a social media post, YouTube video or viewing an in-person demonstration.

**Please consider contributing to the NMWT newsletter High Desert Turning! No tip too elementary and no trick too simple will go unpublished. We count on you to make our newsletter awesome. Please send your contribution to [news@nmwoodturners.org](mailto:news@nmwoodturners.org)**

### Here's what's in it for you:

You are inspiring dozens upon dozens of other turners implement shop solutions that ease their way and improve their flow and turning. You have ideas and solutions that many folks likely envy and would benefit from knowing. There's gratification in uplifting fellow turners.

The club has a large tote of exotic, seasoned and figured timber that was acquired during lockdown and you will be free to select a piece of your choice for every published tip or trick. The tote has wonderful turning stock and you can rifle through it for your choice.

## NMWT's Logo Apparel

Caps (Baseball)	\$15
Long Sleeve Denim Shirt	\$30
Short Sleeve Denim Shirt	\$30
Short Sleeve Snap Shirt	\$30
Polo (golf) Shirt w/Pockets	\$30
T-Shirt V-Neck	\$20
Smocks	\$50

### Items include embroidered NMWT logo

Names embroidered on shirts are additional \$5.00. Sizes XXL, 3XL, 4XL and up are an additional \$3.00.

Contact: [info@nmwoodturners.org](mailto:info@nmwoodturners.org)

Get order forms at the club meetings or use the links below to access the order forms. Once completed, turn your form in to a board member with payment. *Orders are submitted on a quarterly basis.*

Full payment for an order will need to be submitted with each order form before it can be processed! Order placement cut off dates for each quarter will be as follows:



### Order Info

### NMWT Shirt/Cap Form

### NMWT Smock Order Form

Quarter	Months	Order Meeting	Delivery Meeting
1st	Jan-Mar	Feb	Mar
2nd	Apr-Jun	May	Jun
3rd	Jul-Sept	Aug	Sept
4th	Oct-Dec	Nov	Dec

## Discount & Rebate Partners

# DAKOTA

## Dakota Hardwoods -

**Albuquerque, NM**

3700 Singer Blvd. NE, Suite A, Albuquerque,  
NM 87109

**Office: 505-644-WOOD (9663)**

**Monday-Friday: 8:00am - 5:00pm**

**Saturday-Sunday: Closed**

**Say you are with the NMWT for a discount.**



NMWT members receive Wholesale Prices. Rugby's has hardwoods, Thermofused Melamine, plywood, veneers, and furniture grade pine.

# Penn State Industries

your wood turning & dust collection source | 1-800-377-7297

[www.pennstateind.com](http://www.pennstateind.com)

*Register as a member of New Mexico Woodturner at Penn State Industries and automatically get 10% off (in addition to most other promos) your entire order !!! Yes! In effect, you will be doubling dipping on the discounts!!!*

Register by sending an email to [hy.d.tran@gmail.com](mailto:hy.d.tran@gmail.com) with the name, address and email to which your Penn State catalogs are sent. Once you're registered, you'll automatically get 10% off every time you shop online (not applicable to phone or mail orders).



**DENDROTECHNOLOGY**  
TIN SHED MILLWORKS

(505) 980-6161 [www.dendrotsm.com](http://www.dendrotsm.com)

## LIVE EDGE SLABS, TURNING BLANKS, CUSTOM MILLING

We offer 10% off our listed prices to members and give a free item from our oddments box or a turning blank to first time member customers.





**8100-M4 Wyoming Blvd. NE, #188  
Albuquerque, NM 87113**

---

---

---