



High Desert Turning

You're gonna love the way you turn.

You can do this. We guarantee it!

Membership details found within www.nmwoodturners.org



NMWT's Upcoming Monthly Meeting

Club Meetings are generally held 10:00 am to 12:30 pm on the first Saturday of the month



Who: Hy Tran

Topic: Mounting Your Wood to the Lathe

When: Mar 2nd @ 10:00 am MT

(In-person and online demo – Zoom session opens at 9:30 am)

Where: North Domingo Baca Multigenerational Center
7521 Carmel NE Albuquerque, NM 87113

Please see next page for more information regarding guest speaker(s)

President's Turn

A u t h o r : T o m D u r g i n

New Mexico Woodturners,

I'm excited, we finally got the new Laguna lathes in and on the stands. Those Deltas sure served us good for a very long time. Take a moment to think back over the last few years, you saw them at the state fair year after year and at all of our workshops, Pens for the Troops and WIT still has one gainfully employed. NMWT has stepped up, stepped up our club lathe game for you. I hope our new lathes help bring your turning up a step or two (and mine please).

Have you enjoyed our demos so far for 2024? There is a lot to learn in this next upcoming demo. I for one am always looking for a new, better, different way to hold my work. You know I get stuck in a run and need help from you and our demos to get me over the hump. You know we are also working on trying to get a pro to come demo for us, this has been a bit of a challenge so far this year. What do you think, is it worth the money, do you get something special out of a pro demo?



Thomas Durgin - President



(Continued on the next page)

NMWT's Upcoming Monthly Meeting



A u t h o r : L a r r y L i n f o r d

There are many ways to mount a block of wood to a lathe, including centers, face plates, jam chucks, scroll chucks, and a few other unique processes. And within each these, there are assorted methods of attaching the wood. At the March Demonstration, Hy Tran will focus on a few of these methods that were requested by members of the NMWT. In particular, he will discuss jam chucks and paper joints, along with other methods as time allows. As always, Hy will demonstrate the safest ways to employ these methods.

President's Turn cont.

HEY WHERE ARE YOU ON THESE CHALLENGES? ANY PROGRESS?

1. Get involved, your board officers are due replacement at the end of 2024, WE NEED YOU
2. Beads of Courage boxes, make 2024 the biggest year for NMWT BOC donations
3. Pens for Troops, this is the year YOU turn 10, 20 or more
4. Expand and improve your turning, get involved, demo at the fair, attend club meetings and have fun

Want to be more active in NMWT, let us know. We want you to play a part in what this club does, who this club reaches and advancing turners from every skill level. Lend a hand, you won't be sorry.

Future Programs/Activities

Apr 6th	TBD	TBD
May 4th	Rudy Lopez	Professional
Jun 1st	TBD	TBD

NMWT Includes Everyone!

New Mexico Woodturners (NMWT) welcomes everyone from all walks of life. Our mission is to making people more aware of this important craft and art form, to teaching our craft and to including anyone and everyone in our group.

So that we can make sure everyone feels welcome, the NMWT has worked hard to so that our governance documents remain reflective of best practices, desires of our members and to continue welcoming everyone with an interest in woodturning.

As we have gone through our Bylaws, Policies and other documents we have worked to remove gender specific language. Rest assured that the NMWT board will continue this process as these documents come up for review or revision.

NMWT Monthly Board Meeting

Open to all Members

When: Mar 27th, 2024 @ 7:30 pm

Contact info@nmwoodturners.org or any board member for more info or the Zoom link

Reflections from Last Month



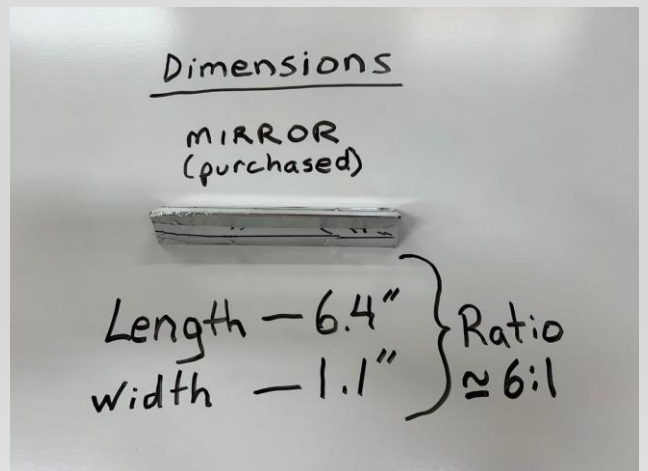
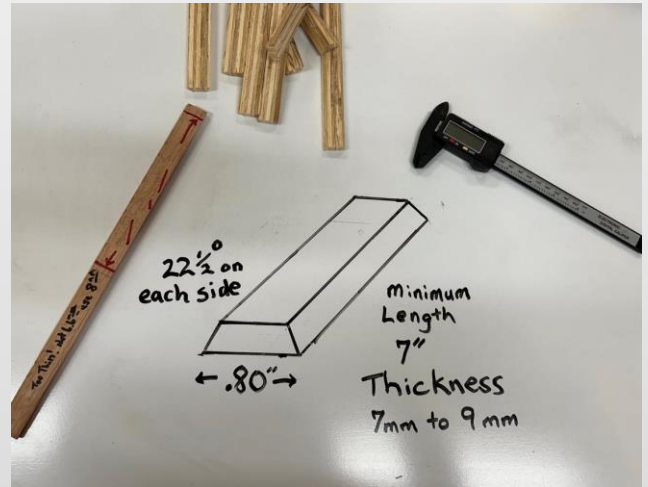
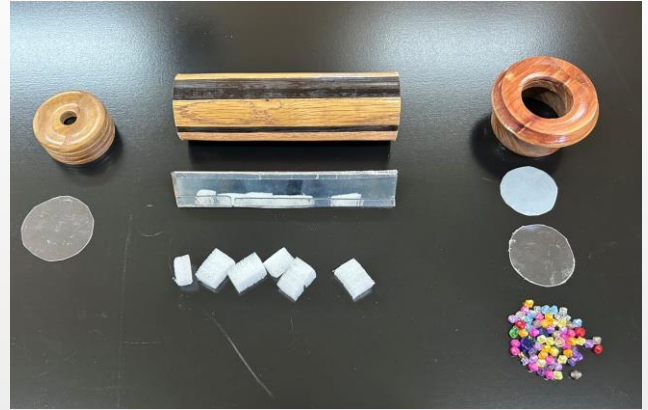
K a l e i d o s c o p e s

A u t h o r : J o h n C o o k

John began his demo emphasizing that safety is of the utmost concern, so the first thing to remember is that a clear plastic disk of appropriate size must cover the inside of the Eyepiece to prevent any eye injuries.

The primary internal components of a kaleidoscope consist of three mirrors, cut to appropriate length to fit the turned barrel, and the long sides are fastened together to form an equilateral triangle. A length-to-width ratio of 6:1 will give good results, but there are no fixed rules. The length of the resulting glass tube controls the number of reflections seen through the eyepiece, with a longer tube giving more but smaller reflections. The turned and trimmed wooden barrel and the mirror system need to be the same length.

Don't use glass mirrors that have the silver on the backside of the glass. (Like bathroom mirrors, the kind where if you touch the front of the glass, you see a gap between your finger and the reflection.) These will work, but the resulting images become dark at the outer edges. For best results, use First Surface Glass. Cut into slats of desired length and width with a glass cutter on the glass side (not the silvered side) of the mirrors. Use a lubricating oil or use a glass cutter with its own reservoir of oil. Clean glass carefully after cutting, and try to avoid touching the first surface except on the very outside edges. Glass often comes with a sheet of clear plastic adhering to the first surface side, which must be removed before taping into a triangle. A source for purchasing mirrors is included below and is advised to achieve best results for your first kaleidoscope builds.



Reflections from Last Month



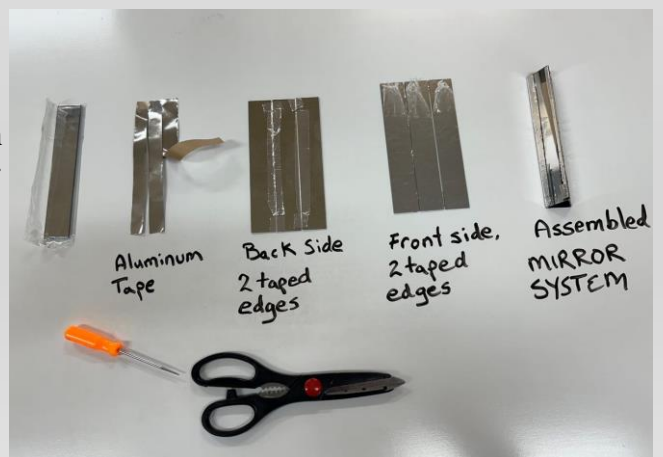
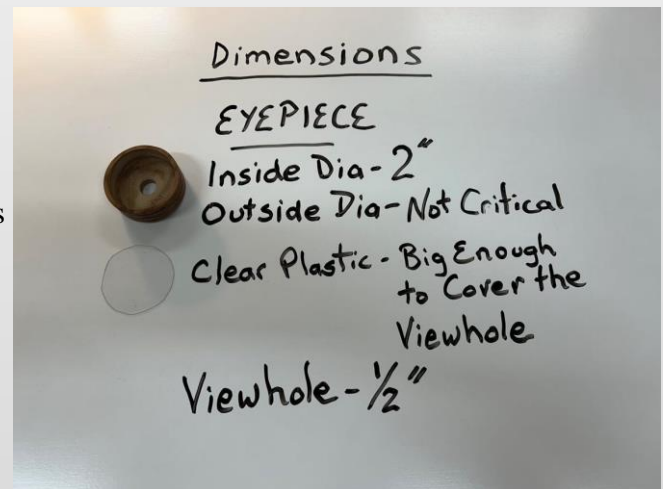
K a l e i d o s c o p e s

A u t h o r : J o h n C o o k

Preparing the Mirror System

John prefers using reflective metallic tape (aluminum tape, not mylar) for making up the mirror system. Identify the plastic-coated side of the mirrors. Stand two mirrors on end and touching along the long sides at about a 60 degree angle. Attach a small piece of tape at the upper edge to hold them in position, then attach a second piece at the bottom. Repeat to attach the third mirror segment to the first two, leaving one seam untaped. Apply a strip of tape along the two seams to make the barrel light-tight. Then lay the mirrors flat, with the plastic-coated surfaces facing up. Carefully peel off the plastic coating, trying not to touch the mirror surfaces. From this point on, dust is the enemy, so try to avoid that.

With the plastic removed, fold the mirrors into the equilateral triangle configuration, apply small pieces of tape to the remaining seam to hold the mirrors in place, and finally apply the last strip of tape along the third seam. Be sure to keep the short ends of the mirrors aligned with each other. The aluminum tape can usually be re-positioned, if necessary, or just slice down the seam and apply a new strip. When formed into a triangle, the long edges of the mirrors should be touching snugly along the whole length, with no gaps. Before final installation, inspect for smudges and dust. The glass tunnel needs to be centered in the wooden barrel and held in place with small pieces of closed foam, plastic peanuts or other dust-free packing material. Simply wedge the packing into the Barrel along side the mirror tunnel. This will keep the mirrors from moving and provide some shock protection. The ends of the equilateral triangle should be in contact with the clear plastic discs of the Eyepiece and the Objective when assembled.



(Continued on the next page)

Reflections from Last Month



K a l e i d o s c o p e s

A u t h o r : J o h n C o o k

Turning the Barrel

Sizing the staves involves some trial and error, and dimensions can vary. If using 8 staves, the long edges have to be cut at a 22.5 degree angle so they fit together as an octagon. Cut one test stave, and then cut into 8 one-inch long segments. Use tape to roll these segments into a ring, and check to make certain the mirror system will fit inside. This fit should not be snug; looser is better and the space will be filled with packing during assembly. It is best to cut 30 or 40 staves at one time to make sure the edges are of uniform angles. John uses slats cut to 8mm to 9mm thick. The thicker the staves, the smaller the hole for the glass tunnel, but the staves can vary one or two millimeters in thickness without any problem.

Lay the staves side-by-side across a couple of long strips of painter's tape and apply wood glue along all the edges. Then roll the staves so that the glued edges of each are pressed firmly to the edges of the adjacent staves, and wrap the tape tightly around the resulting tube. Check each end and adjust the staves slightly to make the outside circular shape as even as possible. Set the rough Barrel aside for a couple of hours to let the glue set up.

Cut the ends of the barrel so that all staves are exactly the same length. This will be longer than the length of the mirrors; the barrel will be trimmed after turning. Hold the barrel between centers to turn, but do not put too much pressure on the centers or it could break the staves apart. Attach wooden disks to the ends with a bit of glue to give attachment points for the lathe centers. Remember that the staves are very thin; you just want to round off the edges of the octagon to make it smoothly round. If possible, aim for a two-inch outside diameter to mate up with the openings in the Eyepiece and the Objective. Before removing from the lathe, fill any gaps or imperfections with a wood glue/sawdust paste, then sand to its final finish. Cut the Barrel to its final length.

Eyepiece and Objective

The Eyepiece and the Objective are made from wooden blocks, and glue-ups from scraps will work well for these. Start with a block about 2-3/4 inches across and 1 inch deep. Drill a 2-inch diameter hole 3/4 of the way through the length of the Eyepiece (This assumes the final Barrel outside diameter is 2 inches; otherwise, adapt as necessary). Mount the Eyepiece blank onto a chuck using the 2-inch hole, and turn the outside to taste. The Eyepiece will need a small viewing hole drilled in its center, approximately 1/2" diameter.

The Objective should be much larger than the Eyepiece to allow light in and to create a closed cell that will contain the colored beads. Start with a block about 4 inches across and 2 inches deep. Drill a recess into through the block of the Objective that is smaller than the Barrel diameter, and about 2/3 of the way through the block. Drill the rest of the way through the block with a slightly smaller bit. Insert a clear plastic disk inside the large opening of the Objective. It will be held in place when the Barrel is inserted. Turn a shallow (about 1 mm) groove near the outside end of the Objective that will hold a disk of translucent plastic (Plastic cut from a milk carton works well.) The space between the

Reflections from Last Month



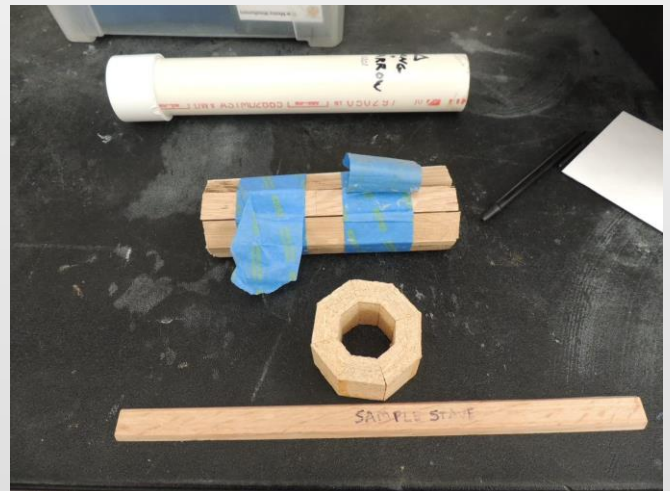
K a l e i d o s c o p e s

A u t h o r : J o h n C o o k

two plastic disks should be about 1/2 inch deep, and it forms the cell that will hold the colored beads or other inserts.

Use small amounts of hot melt glue to attach the Eyepiece and Objective to the ends of the barrel. The hot melt glue has the advantage that it can be softened with a hairdryer if repositioning is necessary.

There are many on-line sources for pre-cut mirror systems; John has had good service from Kaleidoscopes to You (kaleidoscopestoyou.com). John also pointed out that Craigslist is a possible source of large first-surface mirrors, often at no cost. They are removed from old rear-projection televisions being recycled.



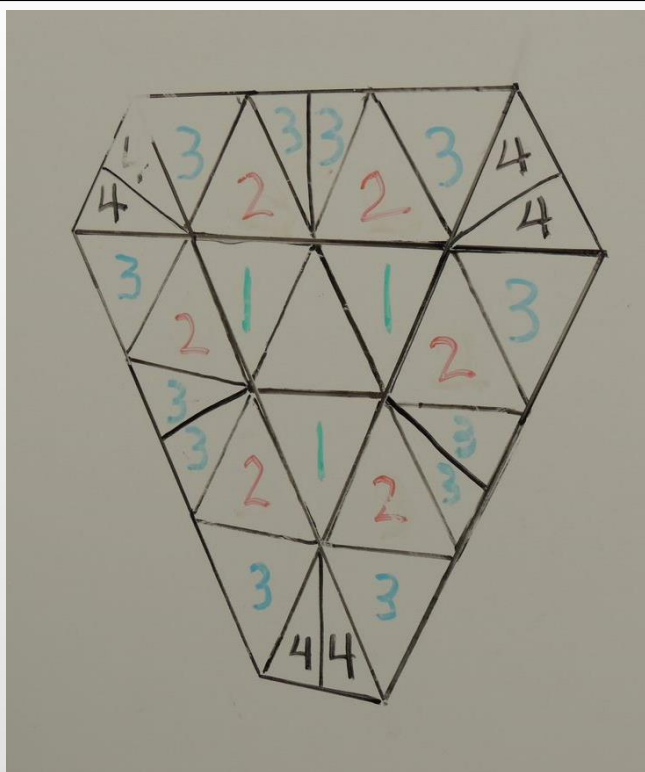
(Continued on the next page)

Reflections from Last Month



K a l e i d o s c o p e s

A u t h o r : J o h n C o o k



Event

A u t h o r : D o n R o d e n

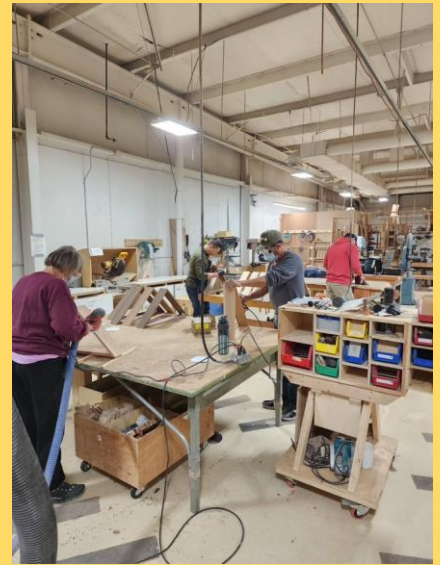
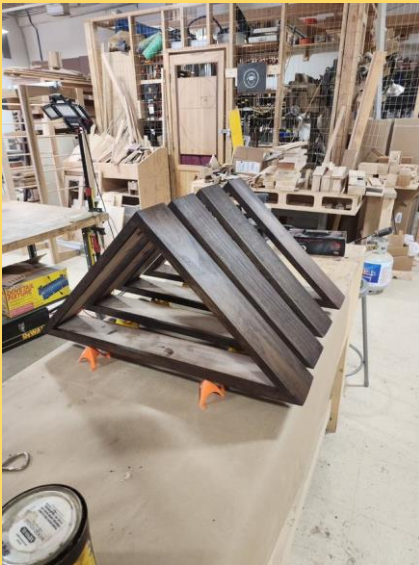
Veterans Day in the Shop

Attention all military veterans. Please mark your calendar for March 10th, noon to 4 pm or whenever we finish. We have 17 Flag Cases that are in the final steps of completion and will start making more. When these Flag Cases are finished, they will be delivered to Santa Fe National Cemetery to be given to families of veterans after they receive THE Flag. Please join fellow veterans in making these flag cases to honor our brothers and sisters who have passed.

Contact Don Roden or Dovetail Community Workshop and let us know you are coming for planning purposes.



I would like to see many of you there.



Silent Auction

C o n t a c t : N M W T T r e a s u r e r

We love to have nifty items or pieces of timber that can be auctioned at our next meeting to support the Scholarship Fund.

Potential ideas include rough turned bowls, gouges gathering dust, seasoned blanks or turning accessories.

Your contributions go to benefit the **Red Hollenbach Scholarship Fund** which is used to reduce the cost for members to attend professional demonstrator's hands-on sessions.



If you are seeking an handcrafted donation for your charitable organization, please email a request to: info@nmwoodturners.org

NMWT on Social Media



The New Mexico Woodturners are on Facebook and YouTube



Facebook is just one way to share your work. However, it's also a great platform to ask questions, request constructive criticism and rub shoulders with other turners.

Various members of the NMWTs moderate the social media accounts and promote the craft and our club actively on these outlets.

A number of the Facebook group members are not NMWT members and that's okay! However, by our NMWT membership being active on social media we can also share the benefits of club membership, promote club activities and foster relationships with turners around the globe.

Please join the Facebook group, subscribe to the YouTube channel and watch us grow turning!

Newsletter Submission

Got a great idea, tip, or trick that you'd like to share?

We'd like to read about it.

What do you need to do?

Write up a description, brief or in-depth, and include a few photos if possible to better detail your idea.

If you like or use a certain webpage or a YouTube channel, please write about and site your source.

Please send articles to news@nmwoodturners.org

Disclaimer: Articles submitted aren't guaranteed a spot in the next issue, but they will be published if educational criteria is met and as it fits organizational needs.



Newsletter

Submission

Deadline

M

a

r

25th

Green Wood

The Green Wood Committee is always on the hunt for greenwood, and we all can agree, woodturners hate to see any good pieces go to a landfill. If you have some greenwood to share, please contact either chair member below for coordination. Our members love greenwood and there are endless possibilities and projects that can be done with it.



Green Wood Chairs

Joe "Stretch" Cole

480-216-3580

jt.cole@hotmail.com

Help Needed

Beads of Courage – NMWT's 2024 Challenge

Our Challenge and Goal:

For each club member to take the time and heart to make at least one Beads of Courage Box during 2023

What is Beads of Courage?

Beads of Courage (BOC) is the NMWT's Community Service Project. Beads of Courage, Inc. is a 501 (c) (3) tax exempt organization working in partnership with the American Association of Woodturners (AAW).

[Official Guide to Beads of Courage – Woodturners Wanted](#)

This is Local!

Our Beads of Courage Bowls are taken directly to UNMH Children's Cancer Facility here in Albuquerque for local patients. However, some bowls can also be sent to a National collection point in Tucson, Arizona.

UNMH Children's Cancer Facility has been treating nearly one hundred seriously ill cancer youngsters each year. For each medical treatment a child receives, he or she gets a bead which they can then keep in their bowl, hence Beads of Courage Bowls. The children do receive a bag to put their beads in, but a Beads of Courage Bowl is far more special and reflective of the hard work to beat cancer!

NMWT currently produces approximately 8 bowls a year and it would be great to see that number increase exponentially.

For more information regarding the program, where to purchase beads, or where to deliver your finely crafted bowl, please see:



BOC Website



BOC Chair / Contacts

Scott Eckstein (NMWT BOC Contact)

505-270-0516

seemee911@gmail.com

Brianna Hayes (UNM Certified Life Specialist)

505-991-8501

bnhayes@salud.unm.edu

Abby Walker (UNM Certified Life Specialist)

505-991-8501

abCWalker@salud.unm.edu

Women in Turning



B y : P a t r i c i a A p t

The local WIT (Women in Turning) chapter had our first meeting of 2024 on February 18th at Dovetail Community Workshop. At this month's meeting we were fortunate to have our own Courtney Gale give a demonstration of the method she uses to turn spheres.

A sphere can be a captivating desk toy or a perfectly fitted lid for a tapered container.

Crafting spheres can be a satisfying and enjoyable wood turning project. Pictured here are some that Courtney has turned.



(Continued on the next page)



What we offer is access to the AAW site and wonderful monthly magazine, and a group of engaged and enthused turners!

Join the private

[Facebook](#) group page [Women in Turning](#) to get ideas & support. AAW membership is not required.

Women in Turning (WiT) -- The

AAW strives to deliver the publications and services that our members need to grow, connect, explore, and thrive in the areas of woodturning that are important to them.

[Guest Membership](#)

ALSO – join the AAW with a guest membership so you can see what else WiT and AAW

By signing up for a complimentary Guest membership, you can have access to AAW resources for a full 60 days. You will be able to explore what the AAW has to offer, kick our tires, and hopefully decide to become a full-fledged, paid AAW member to benefit from everything the AAW has to offer.



L o c a l W i T C o n t a c t s

Patricia Apt (NMWT's WiT Liaison)	505-401-4442	papt625@gmail.com
Nancy Matteson	801-694-6866	namatteson@hotmail.com
Kay Grant	661-599-1832	wykayg@gmail.com
Erin Perry O'Donnell	505-926-1693	erin@dovetailworkshop.com

Women in Turning



B y : P a t r i c i a A p t

The group watches as Courtney shows some of her spheres (picture to the right).

While various methods exist for sphere turning, Courtney uses what's often referred to as "The Shadow Method." This technique relies on achieving a visually close approximation of a sphere and involves rotating the rough sphere between turned cupped centers at different points. The turner essentially follows the "shadow" of the rough sphere, using a spindle gouge or skew to bring down the high spots. The result is a beautifully finished sphere that, when executed skillfully, closely resembles a true sphere.



It's important to note that this method may not be the ideal choice for those who prioritize mathematical precision and absolute perfection. The good news is that there is a multitude of methods to explore when you step up to the lathe to create a sphere. For those intrigued by alternatives, you can look into other techniques such as the template matching method, the octagon method, utilizing a jig, or even exploring an alternative shadow method involving a paper with drawn or printed circles on your lathe bed and a light positioned directly above your wood.

Courtney has provided a detailed handout of the process, which can be found on the NMWT website. Please refer to the handout as you read through the paragraphs below.

There are two parts to this process, (1) turning the cup centers and then (2) using the cup centers to finalize and refine the rounding of the sphere. Courtney brought several pre-made cup centers to the meeting so she could use the demonstration time turning a sphere.

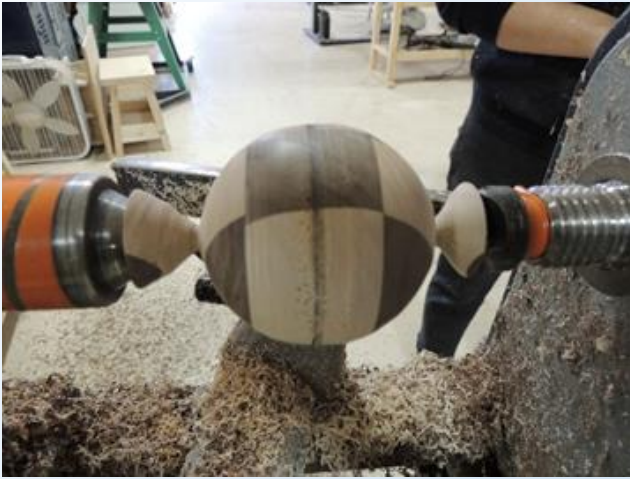
She began by mounting the blank between centers, then she turned a rough football shape. Here she's using a blank made from left over pieces of walnut and maple.



Women in Turning



B y : P a t r i c i a A p t



She continued turning between centers getting as close to a sphere as possible. Then she marked the center circumference of the rough sphere with a pencil. This will be useful later on. The rough sphere is then separated from the waste ends.



For the headstock cup center, use a wood that's relatively softer than the wood you choose for the sphere.



Courtney then placed a cup center in the head stock and another in the tail stock. Please refer to the hand out for detailed instructions on making the cup centers.

Women in Turning



B y : P a t r i c i a A p t



The rough sphere was tightened between cup centers at the first center line that was drawn. That is, the original axis has been rotated 90 degrees and is now perpendicular to the line between centers. She marked the circumference of the new orientation with a pencil line. As you turn and remove material, the pencil lines will disappear at the high points and remain at the low points.



Using a spindle gouge, Courtney shaped the rough sphere into as close to a true sphere as possible. She rotated between this axis and the original axis and continue shaping to get the best result.



Before you know it, you have a nice round sphere!

Women in Turning



B y : P a t r i c i a A p t



It was a really fun demonstration and meeting. We all left inspired to turn our own spheres. Everyone enjoyed getting together, sharing what we're working on, and making plans for future meetings. We came up with several topics for this coming year and we'll be posting information in the NMWT newsletter.

Thank you, Dovetail Community Workshop, for hosting our meeting.

Our next meeting will be 1:00 pm April 21st at Dovetail Community Workshop, located at 6102 Jefferson St NE, Suite D ABQ, NM 87109. Patricia Apt will lead the group making miniature hollowing tools. As always, all NMWT members are welcome to attend our meetings.



Women in Turning

Try out an American Association of Woodturners (AAW) membership for 3 months!!

We know you will be hooked!

AAW Membership Application

WIT (Women in Turning) is “dedicated to encouraging and assisting women in their pursuit of turning, sharing ideas and processes to further member’s skills and creativity, and increasing participation of women in the field of woodturning.”

The AAW WIT Committee agrees that to further this mission, we can work with chapters to help grow the number of women in AAW. Currently, women comprise less the 9% of AAW membership.

To encourage women to join AAW, the WIT Committee offers a limited number of WIT sponsored half price AAW memberships to women for a one-year, full "General" AAW membership.

Eligibility To be eligible, a grant recipient must be a woman and who has never previously been a member of AAW.

Process Only the chapter AAW WIT Liaison, Patricia Apt, chapter president or vice-president may request the grant. After we’ve received the application, the recipient will be sent a promotional code with instructions on how to use the code in applying for an AAW membership. If you have questions, please email wit@woodturner.org.

Limitations

If the nominee is a new member of a local chapter (within the last two months), WIT will pay 100% of the AAW membership.

If the nominee has been a member of a local chapter for more than two months, WIT will pay 50% of the AAW membership.

If the nominee is not a member of a local chapter, WIT will pay 50% of the AAW membership.

Grants are currently limited to no more than two women, per chapter, per quarter.

Quarters end January 31, April 30, July 31, and October 31. Based on the number of requests, this limitation may change.

We hope that this offer will be an incentive for new women woodturners to join your chapter.

[Click Here for AAW Specials for WIT](#)



Beginner's Turn**The Other Machines****A u t h o r : S t e v e J o h n s o n**

Although the emphasis in Woodturning is the lathe and its many attachments and tools associated with it, there are other machines in my shop that I have accumulated that have become essential to my turning projects. Below is a short list of those machines which have become a part of the everyday life of my woodturning.

Bandsaw - This machine has become probably the second most used machine in my shop besides the lathe. It is much easier to cut the corners off of a square blank and make it round than to hack through those corners on the lathe. Cutting thin strips is also much easier. One can even do segments with the appropriate jig. I find new and useful things to do with this very important machine all the time.

Disk Sander - My 12 inch disk sander comes in handy for smoothing parts that can't be done on a lathe. Yes, I can make a sanding disk to mount on the lathe, but then I have to take it on and off every time I use it. Instead, I just walk over to the sander, plug in the shop vac and in seconds get the job done.

Dust Collection and Cleanup - Here I quickly learned that shop vacs don't do the same job as a proper dust collector and hoses while turning. I own a 750 cfm unit dedicated to the lathe and bandsaw. I wish that I had a 1200 cfm unit. I also use a separate shop vac for cleaning up around the lathe, the floor and tool cabinets.

Table/Miter/Track Saws - Sometimes, wood doesn't come perfectly suitable for blanks ready for the lathe. These saws help take unfinished wood from a lumber yard and turn it into something that can be mounted and turned much easier on the lathe. I also use my table saw for cutting segments with a homemade jig I got off of the Internet.

Drill Press - Just like the sander mentioned above, sometimes there are wood projects that require holes to be drilled that are just not suited to being drilled on the lathe. That's when a drill press can become essential. I use mine in the shop on a regular basis.

So, it may seem to the newcomer to Woodturning that all you have to do is go out and buy a lathe and you are done and can turn anything. That couldn't be farther from the truth. The rest of the wood tools in your shop will also come in handy as well to make your life easier in the long run. Some of my projects (segmented bowls) wouldn't have happened without these other tools.

And don't forget: Have fun with your lathe!!

Photo Gallery



Instant



Tom Durgin Walnut Bowl



Tom Durgin, Elm Bowl with
Turquoise Inlay



Tom Durgin Ash Scoop Spatulas

Please send gallery photos by the 3rd Saturday of the month to
gallery@nmwoodturners.org

Photo Gallery



Instant



David Waldrep Box Elder Platter



David Waldrep Box Elder Platter with Turquoise Inlay

Please send gallery photos by the 3rd Saturday of the month to
gallery@nmwoodturners.org

Photo Gallery



Instant



Scott Eckstein Cottonwood Bowl



Woody Stone Maple Bowl



Scott Eckstein Mimosa Bowl

Please send gallery photos by the 3rd Saturday of the month to
gallery@nmwoodturners.org

Photo Gallery



Instant



Dennis Cahill Open Segmented Bowl Various Woods



Woody Stone Osage Orange Bowl



Woody Stone poss Sweet Gum Bowl

Please send gallery photos by the 3rd Saturday of the month to
gallery@nmwoodturners.org

Photo Gallery



Instant



Ray Davis Mesquite Bowl



Woody Stone Cocobolo Bowl



Ray Davis Baple Dye and Iridescent Paint

Please send gallery photos by the 3rd Saturday of the month to
gallery@nmwoodturners.org

Photo Gallery



Instant



Ray Davis Paduke with Aluminum and Plastic Inlay



Bill Gorman Willow Bowl

Please send gallery photos by the 3rd Saturday of the month to
gallery@nmwoodturners.org

Photo Gallery



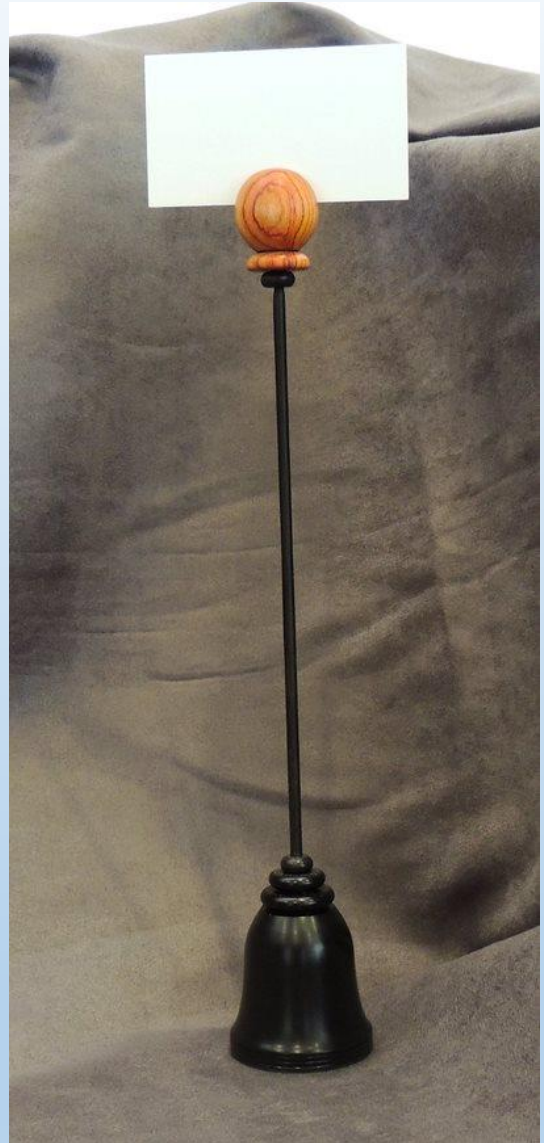
Instant



Bill Gorman Willow Bowl Small



Larry Evans Myrtle Bowl with
Turquoise Inlay



John Spitzenberger
Cardhold Af. Blackwood,
Ebony and Tulipwood

Please send gallery photos by the 3rd Saturday of the month to
gallery@nmwoodturners.org

Photo Gallery



Instant



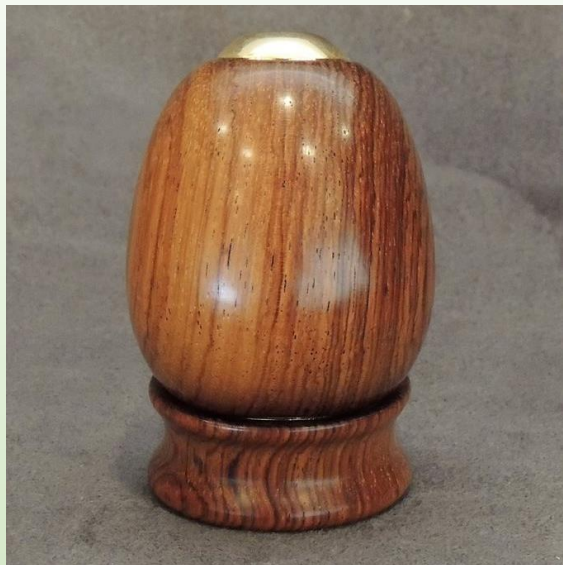
Eddie Bell Drawer Pull Knots with Sleeping Beauty Turquoise

Please send gallery photos by the 3rd Saturday of the month to
gallery@nmwoodturners.org

Photo Gallery



Instant



Rick Judd Egg Size
Kaleidoscope Tiger Wood



James Redstom Osage Orange
Lidded Box



Scott Kershaw Box Elder Bowl with Sycamore Bow Ties

Please send gallery photos by the 3rd Saturday of the month to
gallery@nmwoodturners.org

Photo Gallery



Instant



Scott Kershaw Apricot Bowl



Scott Kershaw Apricot Bowl with Silver Maple Bow Ties

Please send gallery photos by the 3rd Saturday of the month to
gallery@nmwoodturners.org

Photo Gallery



Instant



Wormy Red Maple Plate



Rex Funk Work in Progress
Sepele Open Spiral Hollow Form



Scott Kershaw Great Basin Figured Poplar Platter

Please send gallery photos by the 3rd Saturday of the month to
gallery@nmwoodturners.org

Marketplace



Attached are 3 photos of an End Vise I have FOR SALE. The description of the vise is on a photo. This Vise has never been out of the box and is listed at \$170.00 from Woodriver. I am asking \$85.00 (50%) for it. Rocky 505-235-9002

I'm no longer doing shows... haven't done that in years. But I still have some show-setup things, like lightweight tables, a couple pedestals, table covers and runners, and probably some other things squirrelled away. If you're interested, let me know and I'll dig it out and see just what's there. It's in storage, and I'd like to see it put to use again. Free.

Bob Clancy

bob@southmtpages.com

505-238-6809



Item #1:

Baxter Thread Master made and sold by 'Best Wood Tools' at <https://bestwoodtools.store.turbify.net/bathma.html>. This is possibly the finest threading system for wood lathes. I purchased with grand plans a few years back, but have yet to use it, so it's gotta go. Here's a review of the system <https://sep.turbifycdn.com/ty/cdn/bestwoodtools/BTM-REVIEW.pdf>. Has the 16 pitch head and includes the auxiliary slide. This is for lathes with a swing between 25"-28" but you can purchase a base from them to fit your lathe. Sells for \$900 new plus shipping. Selling for ~~\$675~~ or best offer. \$595 obo.



Item #2:

Bowl coring system Bowlsaver Max 3 by Woodcut with Max Light laser guide. Brand new, never used, gotta make space. Fits 1" diameter tool rest banjo. Paid \$800, will take ~~\$525~~ or best offer. \$475 obo.



**PRICE
REDUCED**

Rick Judd

612-280-8300

See our Marketplace section on our website for better photos

Marketplace

ONEWAY 1018 Mini Lathe on a factory stand for sale

This a high quality lathe with a hardened spindle. Everything is in excellent condition. It has a 10" swing over the bed and 18" between centers. It comes with the extension bed that increases the length between centers to 42". You also get a tool rest banjo and tool rest, a steady rest and 12 assorted turning tools. You can look up all the Oneway 1018 lathe specifications on line at www.onewayeuropa.com. This model can't be purchased new anymore but it is still supported and a full line of new Oneway accessories are available at reasonable prices. An advantage to this lathe design is a very small diameter head stock offering little tool interference when turning from the head stock side. The one horsepower variable speed motor runs smoothly in forward and reverse.

I am selling for a friend. Price \$995.00 for the whole kit. Call Eddie Bell 505 440 4997



If anybody is interested in some burls, a tree guy named Junior has some Oak burls for sale he is asking \$500 for 5 pieces. No idea of the size. his phone # is 505-504-4434.



I have 5 segmenting sleds that I don't need anymore and would like to get rid of. They are for 8, 10, 12, 16 and 18 segments. They may need some modifications depending on grooves on the table saw spacing. If interested contact Bob (Rocky) Rocheleau at (505) 235-9002.



Bridge for Sale

This is a sample marketplace posting. We welcome members to use this space for anything related to woodturning. There is no charge for listing an item. Ads will run for about one month. To request a listing, send item and contact info to sale@nmwoodturners.org. Your ad will be reviewed and posted as quickly as possible.

*** You must be an NMWT member to post ads ***

See our Marketplace section on our website for better photos

2022 Elected Officers, Directors & Committee Chairs

President



Tom Durgin
505-688-1369

Vice President



Larry Linford
505-870-1601

Treasurer



Woody Stone
828-808-7876

Secretary



Sally Breedon
505-352-0159

State Fair



Bill Mantelli
505-400-0266

Membership



Tom McLarty
505-298-3790

Webmaster



Dennis Cahill
505-620-2508

Lead Video



Derek Roff
505-438-1820

Email Administrator



Hy Tran
505-459-8132

Member-at-Large



Ron Bahm
505-881-8845

Equipment & Workshops Beads of Courage Chair



Scott Eckstein
505-270-0516

Logistics



Bob "Rocky" Rocheleau
505-235-9002

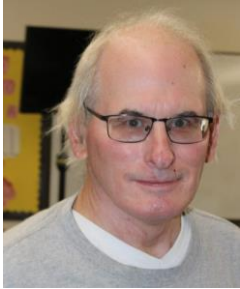
SEEKING

Green wood help

Please speak to a board member regarding any of these positions

2022 Elected Officers, Directors & Committee Chairs

Raffle Coordinator



Dean Cross
575-644-8945

Special Workshops



John Ellis
505-463-7750

Green Wood Manager(s)



Green Wood Manager(s)



Joe "Stretch" Cole
480-216-3580

Past President



Rick Judd
612-280-8300

Newsletter Designer



Traci Durgin
news@nmwoodturners.org
505-688-1370

Apparel Manager



Cindy Edgecomb
505-615-7307

Photographer

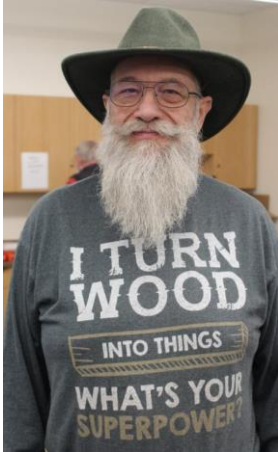


Nancy Matteson
gallery@nmwoodturners.org
801-694-6866

Mentors

Bill Zerby

505-263-6632
Rio Rancho – NM
528 & Southern



Basic spindle turning
& tool sharpening

Scott Kershaw

406-274-2931
Rio Rancho –
Unser & Westside



Basic woodturning skills to
include bowls, plates, platters,
spindle projects; Green wood
processing, coring and twice
turning; Tool sharpening and
lathe maintenance

Hy Tran

505-459-8132
Albuquerque –
Paseo & Ventura



Beginner and Novice
woodturning

John Ellis

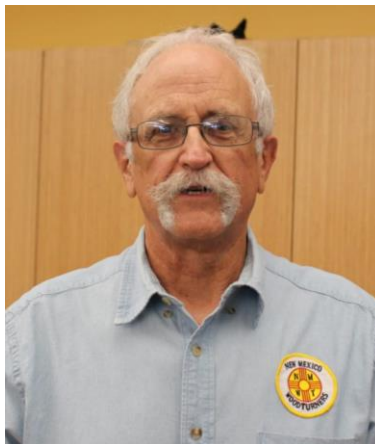
505-463-7750
Placitas



Basic turning, plates,
tools & handles

Larry Linford

505-870-1601
Albuquerque



Basket illusion turning
and embellishment

Bob “Rocky” Rocheleau

505-235-9002
Albuquerque – NE Heights



Segmenting and bowl
turning

Free to NMWT members: give a Mentor a call!

*****WE ARE ALWAYS SEEKING NEW MENTORS*****

Mentors

Rick Judd

612-280-8300
East Mountain



Hollow forms, bowls,
lidded boxes, burls,
natural edge

Ron Bahm

505-881-8845
Albuquerque – NE
Heights



Pen turning, beginning
segment construction,
beginner woodturning

Ray Davis

505-221-4622
Rio Rancho, NM – NW side
raylindavis@r-davis.com



Open and closed Segment
bowls. Stave Bowls, Bowl
turning. Pens.

I have a heated and a/c shop
with 2 lathes ready to go.

Don Roden

763-234-5780
Dovetail Workshop



Skew, carbide tools,
bowls and advanced
turning techniques, like
epoxy turning, finials, and
offset turning

YOUR NAME

Your phone #
Your location



What can you offer?
Help us fill this space

YOUR NAME

Your phone #
Your location



What can you offer?
Help us fill this space

Free to NMWT members: give a Mentor a call!

*****WE ARE ALWAYS SEEKING NEW MENTORS*****

Quick Reference List

(Printer Friendly Version)

2022 NMWT Elected Officers, Directors & Committee Chairs


news@nmwoodturners.org

President	Tom Durgin	505-688-1369	Newsletter Editor	Help Needed	
Vice President	Larry Linford	505-870-1601	Newsletter Designer	Traci Durgin	
Treasurer	Woody Stone	828-808-7876	Photographer(s)	Nancy Matteson	801-694-6866
Secretary	Sally Breeden	505-352-0159	Raffle Coordinator	Dean Cross	575-644-8945
State Fair	Bill Mantelli	505-400-0266			
Membership	Tom McLarty	505-298-3790	Equip/Workshops	Scott Eckstein	505-270-0516
Webmaster	Dave Stein	505-266-0356	Green Wood	Help Needed	
Lead Video	Derek Roff	505-438-1820	Green Wood	Joe "Stretch" Cole	480-216-3580
Email Administrator:	Hy Tran	505-459-8132	Logistics	Bob Rocheleau	505-235-9002
Member-at-Large	Ron Bahm	505-881-8845	Special Workshops	John Ellis	505-463-7750
Past President	Rick Judd	612-280-8300	Apparel Manager	Cindy Edgecomb	505-615-7307

Quick Reference List for Mentors

Free to NMWT members: give a Mentor a call!

Bill Zerby Rio Rancho – NM 528 & Southern	➡	505-263-6632	➡	Basic spindle turning & tool sharpening
Hy Tran Albuquerque – Paseo & Ventura	➡	505-459-8132	➡	Beginner and novice woodturning
Don Roden Dovetail Workshop	➡	763-234-5780	➡	Skew, carbide tools, bowls and advanced turning techniques, like epoxy turning, finials, and offset turning
Larry Linford Albuquerque	➡	505-870-1601	➡	Basket illusion turning and embellishment
Rick Judd East Mountain	➡	615-280-8300	➡	Hollow forms, bowls, lidded boxes, burls, natural edge
Ron Bahm Albuquerque – NE Heights	➡	505-881-8845	➡	Pen turning, beginning segment construction, beginner woodturning
Bob "Rocky" Rocheleau Albuquerque – NE Heights	➡	505-235-9002	➡	Segmenting and bowl turning
Ray Davis Rio Rancho – NW side.	➡	505-221-4622	➡	Open and closed Segment bowls. Stave Bowls, Bowl turning. Pens.
Scott Kershaw Rio Rancho – Unser & Westside	➡	406-274-2931	➡	Basic woodturning skills to include bowls, plates, platters, spindle projects; Green wood processing, coring and twice turning; Tool sharpening and lathe maintenance.

Members are always welcome to contact the people on the mentor list for guidance to better turning ideas and techniques

WE ARE ALWAYS SEEKING NEW MENTORS

Membership Renewal

Membership Dues

Membership dues renewals are due on or before the last day of the month in which the member's current membership term expires. Members who do not renew within thirty (30) days after their membership expiration date will no longer have access to member privileges and will no longer receive the monthly newsletter. Annual dues are as follows:



One year: \$30 for an individual; \$35 for a family
 Two Years: \$55 for an individual; \$65 for a family
 Three Years: \$75 for an individual; \$90 for a family
 Lifetime: \$300 for an individual; \$350 for a family

Additional Fees

1. An individual member who subsequently adds family members will pay the difference between the individual dues and the family dues rate for the remainder of that membership year (i.e., a one-year individual member adding family members would pay an additional \$5.00 dues for the remainder of the membership year).
2. A member requiring a mailed copy of the monthly newsletter will pay an additional \$10 per year to cover cost of mailing.

Renew Online

We are very pleased to announce that you can now pay your membership dues with a credit card on the NMWT website at:

<https://www.nmwoodturners.org/>.

To access online dues payment, simply go to the new "Membership" tab near the top of the homepage and select "Pay Online" from the drop-down menu. This will take you to a secure website managed by Converge, our credit card service provider. There you will find a series of "Buy Buttons" that are clearly labeled with each membership dues option. Simply select the dues option that you want and then hit the "Checkout" button.

You will need to fill in all of the contact information on the payment processing page so that the Treasurer can confirm that our membership records are up to date and also so that he can send your new membership card by regular mail. Also, due to some reporting limitations of the Converge website, you will need to once again select the dues option you want from the drop-down menu labeled "Items Purchased". Fill in your credit card information and hit the "Submit Payment" button to complete the transaction. You should receive an "Order Confirmation" with full details of your purchase by e-mail, and the Treasurer will mail your membership card to you. That's all there is to it!

[Web-Based Credit Card Dues Payment Now Available](#)

Renew by Mail

You can, of course, still mail a check along with current contact and e-mail information to our **Treasurer, Woody Stone, at 2 Blue Corn Ct. Sandia Park, NM 87047.**

The easy way to do that is to go to that same new "Membership" tab on the NMWT homepage and select "Membership Form" from the drop-down menu.

Fill in the form (**PLEASE PRINT CLEARLY**) and mail it to Woody with your check. Should you have any issues or questions regarding the new Credit Card payment system or if you are not sure if your membership expires at the end of 2020, feel free to call Woody at 828-808-7876 or e-mail him at eesphoto492@gmail.com.



Scan our QR code to access our webpage



How to Contribute to High Desert Turning

The NMWT's newsletter editor has submitted High Desert Turning to the AAW's 2020 and 2021 Best Chapter Newsletter Contest. Unfortunately for the NMWT, High Desert Turning has not been selected in the top 3 chapters either year. However, the NMWT chapter website won 1st prize in 2020 for the Best Chapter Website Contest. So, we know it's possible to rank highly among the numerous chapters of the AAW. Much of the website content can be found in High Desert Turning.

So, now you ask, "What is in it for me?" Well, we will get to that. But first, our ask is this:

Submit a short snippet, article or outline of a shop tip or trick you use. You'll be surprised by how many folks will benefit from your personal idea or solution. Take 2, 3, 4 or 5 photos of your process, pieces or how your tip or trick comes together to illustrate how the membership can implement your idea in their shop. If appropriate, share credit where credit is due should you have benefited from a social media post, YouTube video or viewing an in-person demonstration.

Please consider contributing to the NMWT newsletter High Desert Turning! No tip too elementary and no trick too simple will go unpublished. We count on you to make our newsletter awesome. Please send your contribution to news@nmwoodturners.org

Here's what's in it for you:

You are inspiring dozens upon dozens of other turners implement shop solutions that ease their way and improve their flow and turning. You have ideas and solutions that many folks likely envy and would benefit from knowing. There's gratification in uplifting fellow turners.

The club has a large tote of exotic, seasoned and figured timber that was acquired during lockdown and you will be free to select a piece of your choice for every published tip or trick. The tote has wonderful turning stock and you can rifle through it for your choice.

NMWT's Logo Apparel

Caps (Baseball)	\$15
Long Sleeve Denim Shirt	\$30
Short Sleeve Denim Shirt	\$30
Short Sleeve Snap Shirt	\$30
Polo (golf) Shirt w/Pockets	\$30
T-Shirt V-Neck	\$20
Smocks	\$50

Items include embroidered NMWT logo

Names embroidered on shirts are additional \$5.00

Sizes XXL, 3XL, 4XL and up are an additional \$3.00

Contact: info@nmwoodturners.org

Get order forms at the club meetings or use the links below to access the order forms. Once completed, turn your form in to a board member with payment. *Orders are submitted on a quarterly basis.*

Full payment for an order will need to be submitted with each order form before it can be processed! Order placement cut off dates for each quarter will be as follows:



Order Info

NMWT Shirt/Cap Form

NMWT Smock Order Form

Quarter	Months	Order Meeting	Delivery Meeting
1st	Jan-Mar	Feb	Mar
2nd	Apr-Jun	May	Jun
3rd	Jul-Sept	Aug	Sept
4th	Oct-Dec	Nov	Dec

Discount & Rebate Partners

DAKOTA

Dakota Hardwoods -

Albuquerque, NM

3700 Singer Blvd. NE, Suite A, Albuquerque,
NM 87109

Office: 505-644-WOOD (9663)

Monday-Friday: 8:00am - 5:00pm

Saturday-Sunday: Closed

Say you are with the NMWT for a discount.



NMWT members receive Wholesale Prices. Rugby's has hardwoods, Thermofused Melamine, plywood, veneers, and furniture grade pine.

Penn State Industries

your wood turning & dust collection source | 1-800-377-7297

www.pennstateind.com

Register as a member of New Mexico Woodturner at Penn State Industries and automatically get 10% off (in addition to most other promos) your entire order !!! Yes! In effect, you will be doubling dipping on the discounts!!!

Register by sending an email to hy.d.tran@gmail.com with the name, address and email to which your Penn State catalogs are sent. Once you're registered, you'll automatically get 10% off every time you shop online (not applicable to phone or mail orders).



DENDROTECHNOLOGY
TIN SHED MILLWORKS

(505) 980-6161 www.dendrotsm.com

LIVE EDGE SLABS, TURNING BLANKS, CUSTOM MILLING

We offer 10% off our listed prices to members and give a free item from our oddments box or a turning blank to first time member customers.



**8100-M4 Wyoming Blvd. NE, #188
Albuquerque, NM 87113**
