



High Desert Turning

You're gonna love the way you turn.
You can do this. We guarantee it!

Membership details found within www.nmwoodturners.org



NMWT's Upcoming Monthly Meeting

Club Meetings are generally held 10:00 am to 12:30 pm on the first Saturday of the month



Who: Tim Kelly & Rocky Rocheleau

Topic: Segmenting (Part 2)

When: Mar 4th @ 10:00 am MT

(In-person and online demo – Zoom session opens at 9:30 am)

**Where: North Domingo Baca Multigenerational Center
7521 Carmel NE Albuquerque, NM 87113**

*****Please Note: Masks are optional for in-person demo*****

Please see next page for more information regarding guest speaker(s)

President's Turn

A u t h o r : T o m D u r g i n

Fellow New Mexico Woodturners,

I hope you all are well and managing to get out to the shop to make some shavings. This winter has been tougher for me to get out there, maybe it has been colder. I know I've spent some hours out there this winter where I could see my breath the whole time. In my small crowded shop I'm still searching for the right way to add some heat, I'll get it figured out sooner or later.

Just this past weekend I was putting in some time on the lathe and made my first little scoop. It is small, less than 2 inches in diameter and 4 inches long. I sure enjoyed doing that, it was quick, it is useful and quite fun to make. Have you made any kitchen utensils lately? What do you make, scoops, spatulas, spoons or something else? Do you make items with a kit or without, maybe both? I would like to see your kitchen items at our instant gallery in the next couple of months, I plan to make some more and bring them along.

Don't forget about Beads of Courage. We had a good response at the last meeting with 4 or 5 being turned in. Mine was there, but I had to fix the lid so you'll see it again at our March 4th meeting. The club has donated wood earmarked for Beads of Courage, we have the beads. What we need from you is your time and talent. I've you've not yet made one of these boxes, now's the time to start.

At our March 4th gathering we will get part 2 of the segmenting demo from Rocky and Tim. Even if you are not a segmenter there are so many things that apply to other turning, I know I learned a lot. I look forward to seeing you there on March 4th.



Thomas Durgin - President



NMWT's Upcoming Monthly Meeting



A u t h o r : T i m K e l l y

New Mexico Woodturners' Meeting on Mar 4th

Tim Kelly and Rocky Rocheleau will be presenting a two part series on the Art of Segmented Wood Turnings. Segmented turning is more than glueing segments together, it allows the turner to create a variety of shapes and designs limited only by the imagination. Simple to complex designs are developed from the basic theory of the segmented construction process. Session 1 will develop the knowledge of the planning, preparing and creating a vessel, all critical steps to your first segmented project. Many have wood turning skills, so we are going to share the techniques, tools and jigs needed for your journey into the wonderful world of segmented Turnings. Session 1 is a must see in preparation for session 2. Please see the outline on the following pages.

Session 2 will be action packed with demonstrations and slides of the construction process. Preparing various segments of wood for ring construction, accent designs, vessel construction and aesthetic shapes.

Future Programs/Activities

Masks are optional for in-person demo

Apr 1st	NMWT's Members	Finishes and Finishing
May 6th	Stuart Batty	40/40 Grind

Announcement

Library materials (DVDs, etc) will be at the March and April club meetings, free first come first serve. Final disposal after the April Meeting.



Rocky Mountain Woodturning Symposium
15-17 Sep 2023

[Link](#)

NMWT Monthly Board Meeting

Open to all Members

When: Mar 22nd, 2022 @ 7:30 pm

Contact info@nmwoodturners.org or any board member for more info or the Zoom link



Rick Thaler, from DendroTechnology, has donated some wood to NMWT for our Beads of Courage project. Interested members can pick up the wood and it must be used only for turning a BoC vessel. Free turning blanks with bowl submission. Contact Rocky Rocheleau robertoroc@msn.com

Demo Outline



A u t h o r : T i m K e l l y &
R o c k y R o c h e l e a u

I. Part 1 – PLANNING – DESIGN

II. SEGMENTED WOODTURNING

I. Reference Books

- a. The Art of Segmented Woodturning - Malcolm Tibbets
- b. Woodturning with Ray Allen – Dale Nish
- c. Segmented Turning – Ron Hampton
- d. Segmented Woodturning – William Smit

II. Segmented Turning

- a. Difference between segmented turning and solid woodturning
 - i. Solid woodturning, non-segmented, use a block of wood cut from a tree, study the piece before deciding what to make based on the decision of the characteristic observed in the piece of wood.
 - ii. Segmented woodturning involves a much different approach requiring a number of preplanning elements.

III. Types of Segmented Construction

- a. Horizontal Stacked Segmented rings (closed segments) brick layer pattern
- b. Vertical Segmented Staves
- c. Open Segments (voids between segments)
- d. Simple Laminated Layers of Wood - Bowl from a board
- e. Combination

IV. Preparation

- a. Understanding Wood
- b. Moisture Content
 - i. Relatively dry wood, 10% moisture content or less
 - ii. Generally processed wood, NO GREEN WOOD
 - iii. Straight grained wood
- c. Compatibility of species
 - i. Unique characteristics of species
 1. Three designations
 - a. Limited use: too soft, too oily, too open grain, dull in appearance. (Ash, alder, aspen, mahogany, soft maple, red & white oak, padauk)
 - b. Acceptable: Medium to tight grain. (Beech, Birch, Cherry, Orange-usage, Walnut, Wenge)

Demo Outline



A u t h o r : T i m K e l l y &
R o c k y R o c h e l e a u

- c. Preferable: Tight grain, dense, good color & figure. (Apple, Bloodwood, Bubinga, Holly, Hard Maple, Mesquite, Purpleheart, Persimmon, Cocobolo, Yellowheart, Jatoba)
- d. Be aware of the properties of different species, i.e.: color combinations & resulting effects. (Padauk, Bloodwood belled into lighter colored woods, such as, Holly, Maple, Yellowheart.)

V. Glueability

- a. Avoid oily wood, end-grain joints in layers, wood grain orientation.
- b. Types of glue: Many to choose from: Polyvinyl acetate (Titebond most desirable), Epoxy, CA glue, Polyurethane, Hot melt strips, Urea resin.

VI. Design Process

- a. Create Unique Design
 - i. Simple to complex designs
 - 1. Shapes and components become more complex; the design process becomes more complex.
 - 2. Simplest designs are brick laid segments in a closed bowl shape.
 - 3. Complex Designs such as open form vessels, featuring ring patterned, multiple-colored segmented patterns.
 - 4. Sculptural Forms stand out and draw attention and interest.
 - ii. Create a hand sketch
 - 1. Shape
 - a. Focus on the shape is what matters most
 - b. Exotic woods and intricate patterns will not overcome an unpleasant shape.
 - c. Look at the profile lines, do they flow smoothly
 - d. Profile lines should generally change directions smoothly, avoid sudden change in directions.
 - e. Avoid a chunky look/profile of the shape.
 - 2. Look at your design upside down" a quote from David Ellsworth.

VII. Planning

- a. Choosing Materials
 - i. What's on hand?
 - 1. Adequate quantities of each species
 - 2. Compatibilities of species
 - 3. Types of finish on completed project
 - 4. Types of adhesive /glue
 - a. Versatility and performance
 - i. Open working time, curing time, long lasting, and dependability

Demo Outline



A u t h o r : T i m K e l l y &
R o c k y R o c h e l e a u

5. Numerous Variety available

ii. Clamping

1. Adequate number of clamps readily available

- a. Clamps for ring assembly
- b. Rubber Bands for smaller diameters, various sizes
- c. Hose clamps for medium size rings
- d. Strap clamps for larger rings

2. Clamps for layer assembly

- a. Pipe Clamps
- b. Bar Clamps
- c. Quick pistol grip clamps
- d. Spring Clamps
- e. Clamping Jig
- f. Heavy weights
- g. Painter's tape

VIII. Clamping Pressure

- 1. Adequate pressure to provide small amount of glue squeezed out
- 2. Tight fit more important and effective than excessive pressure
- 3. Thin coat of glue applied to both surfaces more effective than large amount

b. Feature Rings

i. Feature rings are a decoration that draws interest and enhances the appearance.

1. A poorly designed or constructed feature ring can destroy and become a distraction.

ii. The number of design elements should correspond to the number of segments in the other rings.

1. Using a basic eight ring segment ring design, the feature ring should be built with 8, 16, or 24 segments to align with basic segment and comprise a balanced configuration with the vertical glue lines.

2. Lack of symmetry in glue lines can become a distraction creating unpleasant effects.

3. Design of feature rings

- a. Endless choices, creative opportunities
- b. Southwest Native American pottery and basketry have a large influence on design
"Woodturning with Ray Allen."

c. Geometric design leads nicely to the construction and assembly of feature ring.

1. Brick laid designs are relatively simple, but there are other possibilities.

d. Accurate construction and alignment are essential

1. Tightness of glue joints

Demo Outline



A u t h o r : T i m K e l l y &
R o c k y R o c h e l e a u

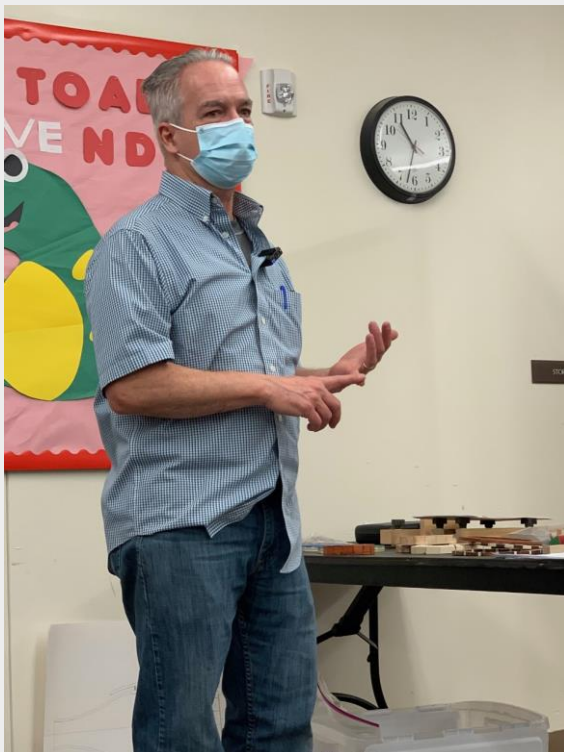
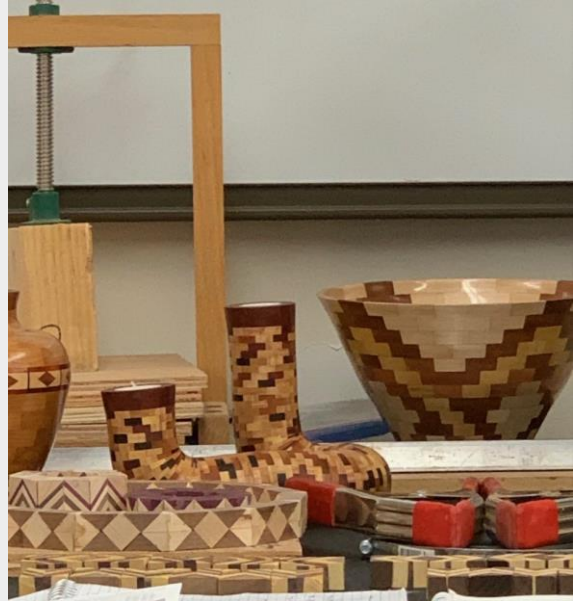
2. Accurate roundness of rings essentials
 - a. Slightly unequal segment lengths and angles will result in inconsistency and oval (not round) rings,
4. Start by drawing accurate detailed sketch.
 - a. Be aware of constructability
 - b. Explore and be creative
 - c. Study works of others for inspiration
- iii. Create Blueprint/Cutting List
 1. Traditional Method
 - a. Sketch a project on graph paper (1/4" per square)
 1. Refine shape
 2. Determine number of segments per layer
 3. Determine number and height of each layer
 - a. Size/height of feature ring
 4. Determine desired wall thickness of project
 - a. Usually, 1/4 to 3/8 inches
 - b. Calculate dimensions of segment requirements
 1. Segment Angles = 360 degrees divided by number of segments divided by 2. (360 degrees divided by 10 segments = 36 degrees divided by 2 = 18 degrees each end.)
 5. Segmented Template
 - a. Make a template for each number of desired segments.
 - i. 1/2"x12"x12" plywood, 1/4" Masonite, Foamboard
 - ii. Locate center of platform, draw multiple circles at 1/2" increments.
 - iii. Draw and extend radial lines from center point to outside circle at calculated miter angles per number of segments.
 - iv. Measure length of segments at desired diameter.
 6. Computer Aided Design
 - a. Number of Programs available
 - i. AutoCAD, Sketch-Up, Segmented Project Planner
 1. Initial investment is costly.
 2. Basic design can be developed quickly
 3. Easily changed and adjusted to complete satisfaction
 - ii. Calculates all dimension needed for construction and assembly
 - iii. Process is not much different from traditional design, just faster and more accurate.
 - iv. Provides a complete, accurate printout of all elements of the project.
 - v. Save your design for future reference

Reflections from Last Month



P i c t u r e s c o u r t e s y
O f R i c k J u d d

Recap of Segmenting Demo Feb 4th, 2023

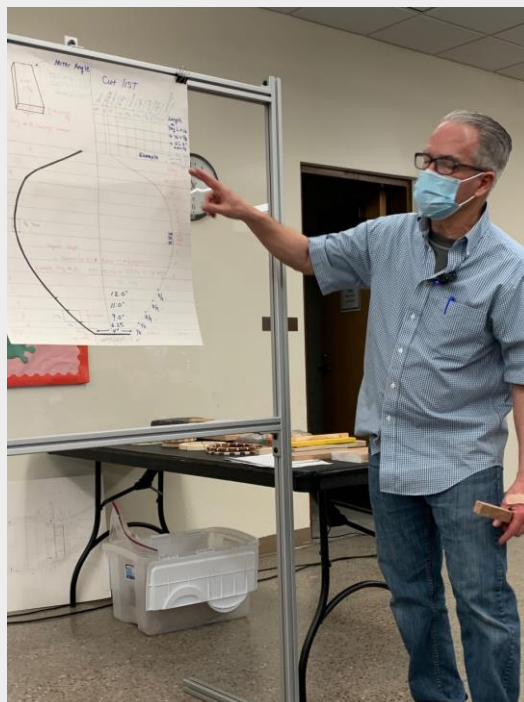
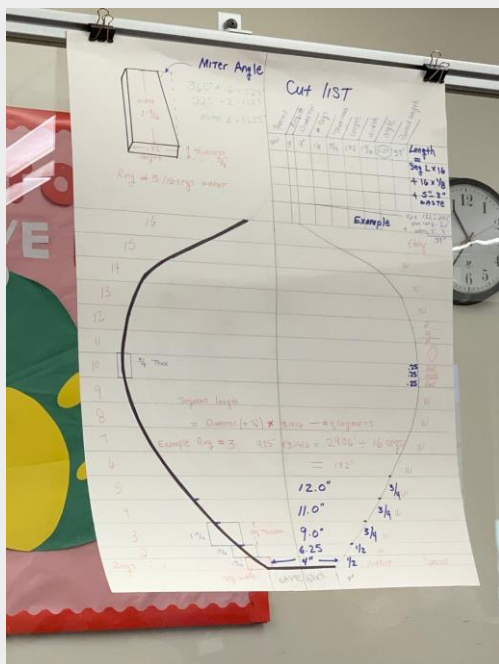


Reflections from Last Month



P i c t u r e s c o u r t e s y
O f R i c k J u d d

Recap of Segmenting Demo Feb 4th, 2023



Reflections from Last Month

P i c t u r e s c o u r t e s y
O f R i c k J u d dRecap of Segmenting Demo Feb 4th, 2023

NMWT Monthly Demonstrations**A u t h o r : L a r r y L i n f o r d****Demonstrations Coming Your Way****March**

Demonstration for Saturday March 4 will be Part II of Segmented Turning, conducted by Rocky Rocheleau and Tim Kelly. In the February demo they presented the steps in preparing the segments for building a segmented vessel, along with many tips from their years of experience.. The March meeting will focus on the actual building and turning of a segmented vessel.

April

The April meeting will focus on a topic receiving the second highest number of votes in our planning meeting last December: Finishing. Finishing is usually the final or next to final step in completing your vessel, and presents the turner with a multitude of choices to highlight the fine workmanship that led to the creation of the vessel.

This demo will be presented by a half dozen members, each focusing on a finish that they use regularly and have mastered. Some of these will be easily recognized by most members, though you may learn new, more effective methods of application. Others will be new to many. So far, we are considering demonstrating home made Shine Juice, Waterlox, Rubio Monocoat, Shellac, Walnut oil, Wipe-on Polyurethane, Tried and True Finish, Polymerized Linseed Oil, and possibly CA glue on a large vessel. (This list is subject to change.) What a great way to expand your repertoire of finish selection and application.

May

The month of May represents a return to normalcy, as we once again host an on-site professional turner. Most of us are familiar with Stuart Batty's work. He is best known for his 40-40 grind gouges, and his ability to turn bowls and platters with virtually no tear-out, which minimize – and in some cases eliminates sanding.

Stuart also has created a line of tools that is unsurpassed in quality and their ability to get the job done in the most efficient manner. He will discuss these, and if his inventory allows, he will be bringing some for sale to our members. More details will be provided in the April newsletter.

NMWT Monthly Demonstrations**A u t h o r : L a r r y L i n f o r d**

One of the main reasons people join the New Mexico Woodturners is the monthly demonstrations. We all find them enjoyable and informative. It's about the most fun and economical way to learn new skills in woodturning.

Your Board of Directors goes to great lengths to ensure that demonstrations meet the needs of the membership, and that we present a lot of different faces and view points. No one ever goes before the assembly and declares that their way of doing something is the only way. Comments, questions and suggestions from the "peanut gallery" are encouraged, and in ten years I've never seen anyone's feelings get hurt.

But bringing you these demos is a lot of work. People are naturally shy about teaching a room full of teachers (preaching to the pulpit), even if only for a couple hours. Once the preferred topics are selected at the December meeting, the VP begins searching for a person who might be able to address a specific topic. Then that person has to be recruited, and the small financial compensation we offer is often not enough to bring people out of their shell.

It's true that most long-time members of the club could actually conduct a demo. But no long-time member knows every aspect of every method, tool and/or technique for turning a piece. So it would

not be right to line up demos using the same presenters over and over. The members would be denied a variety of viewpoints – and get tired of the same old faces month after month. Variety in topics requires variety in presenters. And remember – not every demo is for every member.

So consider this: Nearly every member has something to offer. You have a specific knowledge set born of your own experiences in woodturning. Perhaps you are pretty good with topics relating directly to the lathe, or others that don't but ultimately can make our final products better – such as sanding, finishing, embellishments, tool sharpening, etc.. Many highly talented turners lack extensive experience in these peripheral topics and welcome such presentations.

The VP does not know everyone's experience level, expertise or talents. So, if you have a talent you would like to share – even if you think others already share or surpass your own experience – please come forward. Especially if that talent relates to the topics selected last December. Or if you know someone else who does, submit their names as possible presenters. Contact Larry Linford at ldlinford@yahoo.com or 505-870-1601. Add to the success of your NMWT experience.

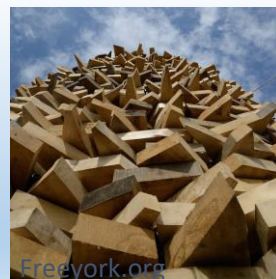
Silent Auction

C o n t a c t : N M W T T r e a s u r e r

We love to have nifty items or pieces of timber that can be auctioned at our next meeting to support the Scholarship Fund.

Potential ideas include rough turned bowls, gouges gathering dust, seasoned blanks or turning accessories.

Your contributions go to benefit the **Red Hollenbach Scholarship Fund** which is used to reduce the cost for members to attend professional demonstrator's hands-on sessions.



If you are seeking an handcrafted donation for your charitable organization, please email a request to: info@nmwoodturners.org

NMWT on Social Media



The New Mexico Woodturners are on Facebook and YouTube



Facebook is just one way to share your work. However, it's also a great platform to ask questions, request constructive criticism and rub shoulders with other turners.

Various members of the NMWTs moderate the social media accounts and promote the craft and our club actively on these outlets.

A number of the Facebook group members are not NMWT members and that's okay! However, by our NMWT membership being active on social media we can also share the benefits of club membership, promote club activities and foster relationships with turners around the globe.

Please join the Facebook group, subscribe to the YouTube channel and watch us grow turning!

Newsletter Submission

Got a great idea, tip, or trick that you'd like to share?

We'd like to read about it.

What do you need to do?

Write up a description, brief or in-depth, and include a few photos if possible to better detail your idea.

If you like or use a certain webpage or a YouTube channel, please write about and site your source.

Please send articles to news@nmwoodturners.org

Disclaimer: Articles submitted aren't guaranteed a spot in the next issue, but they will be published if educational criteria is met and as it fits organizational needs.



Newsletter

Submission

Deadline

M

A

R

20th

Green Wood

The Green Wood Committee is always on the hunt for greenwood, and we all can agree, woodturners hate to see any good pieces go to a landfill. If you have some greenwood to share, please contact either chair member below for coordination. Our members love greenwood and there are endless possibilities and projects that can be done with it.



Green Wood Chairs

Joe "Stretch" Cole

480-216-3580

jt.cole@hotmail.com

Help Needed

Beads of Courage – NMWT's 2023 Challenge

Our Challenge and Goal:

For each club member to take the time and heart to make at least one Beads of Courage Box during 2023

What is Beads of Courage?

Beads of Courage (BOC) is the NMWT's Community Service Project.

Beads of Courage, Inc. is a 501 (c) (3) tax exempt organization working in partnership with the American Association of Woodturners (AAW).

[Official Guide to Beads of Courage – Woodturners Wanted](#)

This is Local!

Our Beads of Courage Bowls are taken directly to UNMH Children's Cancer Facility here in Albuquerque for local patients. However, some bowls can also be sent to a National collection point in Tucson, Arizona.

UNMH Children's Cancer Facility has been treating nearly one hundred seriously ill cancer youngsters each year. For each medical treatment a child receives, he or she gets a bead which they can then keep in their bowl, hence Beads of Courage Bowls. The children do receive a bag to put their beads in, but a Beads of Courage Bowl is far more special and reflective of the hard work to beat cancer!

NMWT currently produces approximately 8 bowls a year and it would be great to see that number increase exponentially.

For more information regarding the program, where to purchase beads, or where to deliver your finely crafted bowl, please see:



BOC Website



BOC Chair / Contacts

Scott Eckstein (NMWT BOC Contact)

505-270-0516

seemee911@gmail.com

Brianna Hayes (UNM Certified Life Specialist)

505-991-8501

bnhayes@salud.unm.edu

Abby Walker (UNM Certified Life Specialist)

505-991-8501

abCWalker@salud.unm.edu

Women in Turning

A u t h o r : P a t r i c i a A p t



February 19th the WIT women met at our usual meeting place, Dovetail Community Workshop. Many thanks again to Erin O'Donnell for hosting our monthly group meetings. We began the meeting with some housekeeping and discussed topics for upcoming meetings. We agreed on a preliminary plan to have a one-day workshop sometime this summer to include a group project.



The topic for February and March is bowl turning and the importance of grain orientation. The wood fibers of a log are like a bundle of straws bound together. They are oriented in the same vertical direction in which the tree grows. These fibers are what makes the grain pattern of the wood and vary greatly between species.

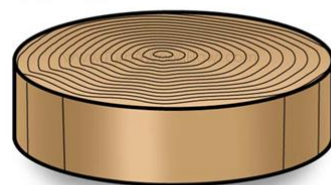
The two basic wood blank orientation used to make bowls are side grain and end grain (side grain is sometimes called face-grain). Both have pluses and minus. With an end-grain blank you have to deal with the pith and surrounding area, which can crack or split. You can leave it in and work with



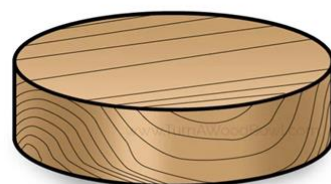
it, creating some beautiful effects, or you can cut it out all together. On the up-side, one advantage to turning an end-grain blank is the surface you are cutting does not change, as the grain is running parallel to the spindle axis.

Continued on the next page

END-GRAIN
ORIENTED BOWL



SIDE-GRAIN
ORIENTED BOWL



What we offer is access to the AAW site and wonderful monthly magazine, and a group of engaged and enthused turners!

Join the private

[Facebook](#) group page [Women in Turning](#) to get ideas & support. AAW membership is not required.

Women in Turning (WiT) -- The

AAW strives to deliver the publications and services that our members need to grow, connect, explore, and thrive in the areas of woodturning that are important to them.

[Guest Membership](#)

ALSO – join the AAW with a guest membership so you can see what else WiT and AAW

By signing up for a complimentary Guest membership, you can have access to AAW resources for a full 60 days. You will be able to explore what the AAW has to offer, kick our tires, and hopefully decide to become a full-fledged, paid AAW member to benefit from everything the AAW has to offer.



L o c a l W i T C o n t a c t s

Patricia Apt (NMWT's WiT Liaison)	505-401-4442	papt625@gmail.com
Nancy Matteson	801-694-6866	namatteson@hotmail.com
Kay Grant	661-599-1832	wykayg@gmail.com
Erin Perry O'Donnell	505-926-1693	erin@dovetailworkshop.com

Women in Turning



A u t h o r : P a t r i c i a A p t



February's meeting was Part 1 of bowl turning with Nancy Matteson demonstrating an end-grain oriented bowl turning. Nancy began by explaining the importance of preparing the blank for mounting between centers. The blank she used was a piece of NM Locust. The blank was dry and cracked and Nancy had filled the cracks with two-part epoxy. There was a layer of cured epoxy on one end and Nancy cut this away with a drill and Forstner bit so the live center would press against bare wood. She then mounted the blank between centers and turned a tenon.



Nancy explained the importance of sizing the tenon to fit in the chuck. Here she is measuring the jaws when they are at the optimum setting for making a true circle.



Though mostly a demonstration by Nancy it also turned out to be a bit of a collaborative project as everyone had a chance to try their own tools and take a turn at cutting both the inside and outside of the bowl. This was a great opportunity especially for members that are still in the learning stage.

Women in Turning



A u t h o r : P a t r i c i a A p t



Still needs sanding and finishing, but a good final result.

Many thanks to Nancy Matteson for demonstrating and leading the group. Thank you to the New Mexico Wood Turners for the use of the lathe. Next month will be Bowl Turning Part 2, Side Grain orientation (also called Face Grain). The meeting will be at 1:00, March 19th, at Dovetail Community Workshop, 6102 Jefferson St NE Suite D, Albuquerque, NM 87109. All NMWT members are welcome to attend our meetings.



Women in Turning

Try out an American Association of Woodturners (AAW) membership for 3 months!!

We know you will be hooked!

AAW Membership Application

WIT (Women in Turning) is “dedicated to encouraging and assisting women in their pursuit of turning, sharing ideas and processes to further member’s skills and creativity, and increasing participation of women in the field of woodturning.”

The AAW WIT Committee agrees that to further this mission, we can work with chapters to help grow the number of women in AAW. Currently, women comprise less the 9% of AAW membership.

To encourage women to join AAW, the WIT Committee offers a limited number of WIT sponsored half price AAW memberships to women for a one-year, full "General" AAW membership.

Eligibility To be eligible, a grant recipient must be a woman and who has never previously been a member of AAW.

Process Only the chapter AAW WIT Liaison, Patricia Apt, chapter president or vice-president may request the grant. After we’ve received the application, the recipient will be sent a promotional code with instructions on how to use the code in applying for an AAW membership. If you have questions, please email wit@woodturner.org.

Limitations

If the nominee is a new member of a local chapter (within the last two months), WIT will pay 100% of the AAW membership.

If the nominee has been a member of a local chapter for more than two months, WIT will pay 50% of the AAW membership.

If the nominee is not a member of a local chapter, WIT will pay 50% of the AAW membership.

Grants are currently limited to no more than two women, per chapter, per quarter.

Quarters end January 31, April 30, July 31, and October 31. Based on the number of requests, this limitation may change.

We hope that this offer will be an incentive for new women woodturners to join your chapter.

[Click Here for AAW Specials for WIT](#)



Beginner's Turn



Social Media and the Beginning Woodturner

A u t h o r : S t e v e J o h n s o n

Beware of what you experience on social media as a beginner, especially YouTube. These videos are usually produced by production turners from a production standpoint. Watching these people attempt to explain beginning woodturning on a \$10,000 Robust or Vicmarc lathe with a \$250 custom bowl gouge ground to their particular bevel angle and grind by hand, backed up by \$10,000 worth of shop equipment is laughable. Sure, if you are a production turner and this is a **business** you are in, then capital equipment is a necessary business expense. You also have tax accountants figuring out how to amortize all this stuff.

But the people I have actually talked to in this club are not production turners in general. I certainly am not. We usually are working out of our garages with limited space. Time and money spent are always discretionary and every hour and cent counts.

I have watched many many videos produced by production turners over the last two years who are really doing the social media thing to augment their business revenue. They have been turning for many many years, one person living in Australia, for more than 50 years as a full time production turner. So I find that watching him turn a tricky bowl, out of a blank of some exotic wood I have never heard of and cannot buy, with all that experience and the tools that he custom grinds, just doesn't do me a lot of good. You can't even buy his Vicmarc VL150 lathe in the U.S.

As a beginner, sure it is comforting to watch these people and I pick up a tip or two along the way, BUT I must not let myself go down the black hole of doing nothing but watching videos. And NOT going out and actually turning wood on my lathe.

Pay attention now because the following is the punch line:

NOTHING makes up for experience at the lathe. You either go out there and face whatever challenges that await turning wood and making mistakes, or it is time to find another avenue for your time and money.

It is my experience that eventually, if I try hard enough, make enough mistakes and keep going, I do something **good** and **pleasing** to both me and the people that I give my work to. And that is a little mental secret that I pass along to you about woodturning for free.

And don't forget: Have fun with your lathe!!

Photo Gallery



Instant



David Croxton



David Croxton

Please send gallery photos by the 3rd Saturday of the month to
gallery@nmwoodturners.org

Photo Gallery



Instant



David Croxton



Edward Otero



Larry Linford



Larry Linford

Please send gallery photos by the 3rd Saturday of the month to
gallery@nmwoodturners.org

Photo Gallery



Instant



Larry Linford



Michael Jackson

Please send gallery photos by the 3rd Saturday of the month to
gallery@nmwoodturners.org

Photo Gallery



Instant



Nancy Matteson



Patricia Apt



Patricia Apt

Please send gallery photos by the 3rd Saturday of the month to
gallery@nmwoodturners.org

Photo Gallery



Instant



Ray Davis



Ray Davis



Rick Funk



Ray Davis

Please send gallery photos by the 3rd Saturday of the month to
gallery@nmwoodturners.org

Photo Gallery



Instant



Scott Eckstein



Scott Kershaw



Scott Kershaw



Scott Kershaw

Please send gallery photos by the 3rd Saturday of the month to
gallery@nmwoodturners.org

Photo Gallery



Instant



Scott Kershaw



Tom Durgin

Please send gallery photos by the 3rd Saturday of the month to
gallery@nmwoodturners.org

Marketplace

WOOD, more WOOD and OTHER ITEMS



Bob Fitzsimmons
505-988-3019

4 Boxes of WOOD Pen Blanks each box contain 100 plus blanks at \$100.00 per box and includes 37 FREE Pen Kits.

1 Box Acrylic Pen & Stopper blanks \$100.00. Includes 37 FREE Pen and 20 Stopper kits.

1 box 77 wood stopper blanks \$100.00 with 20 FREE stopper kits.

4 Boxes turning wood contains 61 pcs at \$150.00 per box with sizes 1x1x12 to peppermill size plus small bowl blanks.

1 Bowl Blank, 12x12x4, \$30.00

1 Rikon 16" Scroll Saw, Model 10-600VS, \$100.00

1 PSI Buffing System, \$50.00.

1. 3-Stage lathe polishing system 8" wheels \$40.00

60 Misc. Pen and Stopper boxes \$40.00

70 Misc. Pen and Stopper display tubes. \$20.00

(THE ENTIRE PACKAGE FOR . \$1,000.00) .



See our Marketplace section on our website for better photos

Marketplace



Oneway bowl steady. Current retail 140\$ plus tax - sale price 70\$. The attachment block is individual and must fit the slot between the ways. Currently it fits a Jet 16/42 but individual clamp blocks are available from oneway for about \$18 for almost any lathe.



This is, I believe, one of the original design elbow-tool articulated hollowing tools. It should fit most any size lathe as it clamps to the tailstock quill and uses the lathe tool rest. It comes with a 3/4" bar w/ tear drop type scraper plus adapters for smaller hollowing bars(not included). Their current model, not totally comparable to this, retails at \$660 I believe. Sale Price \$250.



Grex AS 368 pneumatic orbital rotary sander - currently retails for \$120 w/o the shaft extension. Not shown is a substantial number of sanding discs and pads which will be included with the sander. Offered for sale at \$70.



Collet chuck. Very useful for chucking up things like pen mandrels, bottle stoppers etc. Not sure about the brand but believe it is Craft Supplies Woodriver brand and retails at \$100. For sale at \$50.

Interested? Contact John Vogel
505 239-8850 text or call

See our Marketplace section on our website for better photos

Marketplace



Vicmarc VL100 circa 1996/1997
 Spindle 1" x 8 tpi with 24 indexing holes
 Swing 250 mm (~9.8 inches)
 Distance between centers 350 mm (~13.75 inches)
 Morse taper 2 spindle and tailstock
 ~5/8" tool rest post hole
 Six speeds (~600, 1000, 1200, 1800, 2100 and 3600 rpm)
 1/2 HP motors with new belts
 Both lathes have been completely sandblasted and repainted

I have only been able to complete 3 of the 5 Vicmarc lathes I am restoring from a school district in Utah. These two are for sale. The "clunkier" base was a prototype and with the price of plywood now I am not planning to redo it. The more streamlined base is much more thought out and refined; hence the asking price difference. For sale are these two Vicmarc VL100 wood lathes - asking \$500 for larger base (no Vicmarc sticker) and \$675 for smaller, labeled base with leveling feet. Please call, text or email Scott to ask questions or test drive (I am unable to answer my phone at work; please allow 48 hours for response) - email is kershaw.scott@gmail.com, phone (406)274-2931. Many thanks! Scott

New spindle bearings in each headstock - will include "nut chuck" with each lathe
 Both lathes have safety on/off switch and have forward and reverse added

Each lathe has belt tensioning knob for easy speed/belt adjustments

The "C-clip" quill retainer was this first edition lathe's Achilles heel - these have been repaired but have some slop - does not impact performance, in my opinion.

Live centers, drive centers, faceplates, chucks, tool rests and tools NOT included - may discuss in person

Woodturning Tools for Sale

Josie Dominguez has some turning tools for sale.

Her number is 575-520-0533

Her email is yosidoming@gmail.com



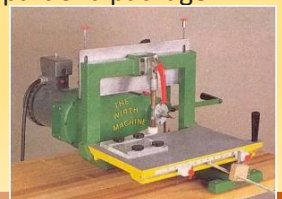
Oliver lathe and tools for sale

Contact philhopi@gmail.com

Original 'Wirth Machine', brain child of John Wirth of Woodworker's Supply. Check out the details at <https://woodworker.com/wirth-machine-package-mssu-95-100.asp>. Cuts precise tenons, angle tenons, dovetails or even duplicate carved shapes. This is the original with mounted 1-1/2HP, 3,450RPM, TEFC, 115/230V, 1PH motor, not the later designs that required you supply and mount a router. In addition to the basic package I have a number of tenon templates and guides I'll include. New was well over \$2K. Selling for \$850 but will negotiate down. Also have a bunch of spiral cut bits that could be discussed as part of a package if interested.

Rick Judd
Rickjudd@mac.com

612-280-8300



See our Marketplace section on our website for better photos

Please notify sale@nmwoodturners.org once item has sold

Marketplace

Title of Your Ad Here

Description of your Ad

Picture of your
Advertisement

Contact info for your Ad

Rough-Turned Bowls for Sale

David Hallman has hundreds of rough-turned bowls, in various woods, including cherry, china berry, walnut, sycamore, mimosa, sassafras, and mesquite. Some are natural edge (with and without bark), others are cut edge. Sizes range from four inches up to fifteen inches wide, shallow up to six inches tall. Asking one dollar up to twenty five dollars for the larger sizes. Volume discounts. Located in Silver City.

Contact David at (575)654-0299
or mesquitedave@gmail.com



Title of Your Ad Here

Description of your Ad

Picture of your
Advertisement

Contact info for your Ad

Bridge for Sale



This is a sample marketplace posting.

We welcome members to use this space for anything related to woodturning. There is no charge for listing an item. Ads will run for about one month.

To request a listing, send item and contact info to sale@nmwoodturners.org. Your ad will be reviewed and posted as quickly as possible.

*** You must be an NMWT member to post ads ***

See our Marketplace section on our website for better photos

2022 Elected Officers, Directors & Committee Chairs

President



Tom Durgin
505-688-1369

Vice President



Larry Linford
505-870-1601

Treasurer



Woody Stone
828-808-7876

Secretary



Sally Breedon
505-352-0159

State Fair



Bill Mantelli
505-400-0266

Membership



Tom McLarty
505-298-3790

Webmaster



Brad Carvey
505-856-4033

Lead Video



Derek Roff
505-438-1820

Email Administrator



Hy Tran
505-459-8132

Member-at-Large



Ron Bahm
505-881-8845

Equipment & Workshops Beads of Courage Chair



Scott Eckstein
505-270-0516

Logistics



Bob "Rocky" Rocheleau
505-235-9002

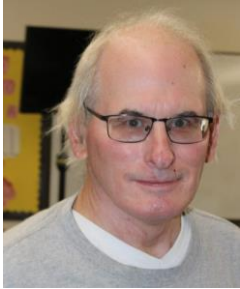
SEEKING

Green wood help

Please speak to a board member regarding any of these positions

2022 Elected Officers, Directors & Committee Chairs

Raffle Coordinator



Dean Cross
575-644-8945

Special Workshops



John Ellis
505-463-7750

Green Wood Manager(s)



Green Wood Manager(s)



Joe "Stretch" Cole
480-216-3580

Past President



Rick Judd
612-280-8300

Newsletter Designer



Traci Durgin
news@nmwoodturners.org
505-688-1370

Apparel Manager



Cindy Edgecomb
505-615-7307

Photographer

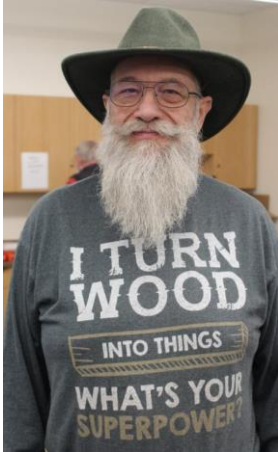


Nancy Matteson
gALLERY@nmwoodturners.org
801-694-6866

Mentors

Bill Zerby

505-263-6632
Rio Rancho – NM
528 & Southern



Basic spindle turning
& tool sharpening

YOUR NAME

Your phone #
Your location



What can you offer?
Help us fill this space

Hy Tran

505-459-8132
Albuquerque –
Paseo & Ventura



Beginner and Novice
woodturning

John Ellis

505-463-7750
Placitas



Basic turning, plates,
tools & handles

Larry Linford

505-870-1601
Albuquerque



Basket illusion turning
and embellishment

Bob "Rocky" Rocheleau

505-235-9002
Albuquerque – NE Heights



Segmenting and bowl
turning

Free to NMWT members: give a Mentor a call!

*****WE ARE ALWAYS SEEKING NEW MENTORS*****

Mentors

Rick Judd

615-280-8300
East Mountain



Hollow forms, bowls,
lidded boxes, burls,
natural edge

Ron Bahm

505-881-8845
Albuquerque – NE
Heights



Pen turning, beginning
segment construction,
beginner woodturning

Ray Davis

505-221-4622
Rio Rancho, NM – NW side
raylindavis@r-davis.com



Open and closed Segment
bowls. Stave Bowls, Bowl
turning. Pens.

I have a heated and a/c shop
with 2 lathes ready to go.

YOUR NAME

Your phone #
Your location



What can you offer?
Help us fill this space

YOUR NAME

Your phone #
Your location



What can you offer?
Help us fill this space

YOUR NAME

Your phone #
Your location



What can you offer?
Help us fill this space

Free to NMWT members: give a Mentor a call!

*****WE ARE ALWAYS SEEKING NEW MENTORS*****

Quick Reference List

(Printer Friendly Version)

2022 NMWT Elected Officers, Directors & Committee Chairs


news@nmwoodturners.org

President	Tom Durgin	505-688-1369	Newsletter Editor	Help Needed	
Vice President	Larry Linford	505-870-1601	Newsletter Designer	Traci Durgin	
Treasurer	Woody Stone	828-808-7876	Photographer(s)	Nancy Matteson	801-694-6866
Secretary	Sally Breeden	505-352-0159	Raffle Coordinator	Dean Cross	575-644-8945
State Fair	Bill Mantelli	505-400-0266			
Membership	Tom McLarty	505-298-3790	Equip/Workshops	Scott Eckstein	505-270-0516
Webmaster	Dave Stein	505-266-0356	Green Wood	Help Needed	
Lead Video	Derek Roff	505-438-1820	Green Wood	Joe "Stretch" Cole	480-216-3580
Email Administrator:	Hy Tran	505-459-8132	Logistics	Bob Rocheleau	505-235-9002
Member-at-Large	Ron Bahm	505-881-8845	Special Workshops	John Ellis	505-463-7750
Past President	Rick Judd	612-280-8300	Apparel Manager	Cindy Edgecomb	505-615-7307

Quick Reference List for Mentors

Free to NMWT members: give a Mentor a call!

Bill Zerby Rio Rancho – NM 528 & Southern	➡	505-263-6632	➡	Basic spindle turning & tool sharpening
Hy Tran Albuquerque – Paseo & Ventura	➡	505-459-8132	➡	Beginner and novice woodturning
John Ellis Placitas	➡	505-463-7750	➡	Basic turning, plates, tools & handles
Larry Linford Albuquerque	➡	505-870-1601	➡	Basket illusion turning and embellishment
Rick Judd East Mountain	➡	615-280-8300	➡	Hollow forms, bowls, lidded boxes, burls, natural edge
Ron Bahm Albuquerque – NE Heights	➡	505-881-8845	➡	Pen turning, beginning segment construction, beginner woodturning
Bob "Rocky" Rocheleau Albuquerque – NE Heights	➡	505-235-9002	➡	Segmenting and bowl turning
Ray Davis Rio Rancho – NW side.	➡	505-221-4622	➡	Open and closed Segment bowls. Stave Bowls, Bowl turning. Pens.

Members are always welcome to contact the people on the mentor list for guidance to better turning ideas and techniques

WE ARE ALWAYS SEEKING NEW MENTORS

Membership Renewal

Membership Dues

Membership dues renewals are due on or before the last day of the month in which the member's current membership term expires. Members who do not renew within thirty (30) days after their membership expiration date will no longer have access to member privileges and will no longer receive the monthly newsletter. Annual dues are as follows:



One year: \$25 for an individual; \$30 for a family
 Two Years: \$45 for an individual; \$55 for a family
 Three Years: \$65 for an individual; \$80 for a family
 Lifetime: \$300 for an individual; \$350 for a family

Additional Fees

1. An individual member who subsequently adds family members will pay the difference between the individual dues and the family dues rate for the remainder of that membership year (i.e., a one-year individual member adding family members would pay an additional \$5.00 dues for the remainder of the membership year).
2. A member requiring a mailed copy of the monthly newsletter will pay an additional \$10 per year to cover cost of mailing.

Renew Online

We are very pleased to announce that you can now pay your membership dues with a credit card on the NMWT website at:

<https://www.nmwoodturners.org/>.

To access online dues payment, simply go to the new "Membership" tab near the top of the homepage and select "Pay Online" from the drop-down menu. This will take you to a secure website managed by Converge, our credit card service provider. There you will find a series of "Buy Buttons" that are clearly labeled with each membership dues option. Simply select the dues option that you want and then hit the "Checkout" button.

You will need to fill in all of the contact information on the payment processing page so that the Treasurer can confirm that our membership records are up to date and also so that he can send your new membership card by regular mail. Also, due to some reporting limitations of the Converge website, you will need to once again select the dues option you want from the drop-down menu labeled "Items Purchased". Fill in your credit card information and hit the "Submit Payment" button to complete the transaction. You should receive an "Order Confirmation" with full details of your purchase by e-mail, and the Treasurer will mail your membership card to you. That's all there is to it!

[Web-Based Credit Card Dues Payment Now Available](#)

Renew by Mail

You can, of course, still mail a check along with current contact and e-mail information to our **Treasurer, Woody Stone, at 2 Blue Corn Ct. Sandia Park, NM 87047.**

The easy way to do that is to go to that same new "Membership" tab on the NMWT homepage and select "Membership Form" from the drop-down menu.

Fill in the form (**PLEASE PRINT CLEARLY**) and mail it to Woody with your check. Should you have any issues or questions regarding the new Credit Card payment system or if you are not sure if your membership expires at the end of 2020, feel free to call Woody at 828-808-7876 or e-mail him at eesphoto492@gmail.com.



Scan our QR code to access our webpage



How to Contribute to High Desert Turning

The NMWT's newsletter editor has submitted High Desert Turning to the AAW's 2020 and 2021 Best Chapter Newsletter Contest. Unfortunately for the NMWT, High Desert Turning has not been selected in the top 3 chapters either year. However, the NMWT chapter website won 1st prize in 2020 for the Best Chapter Website Contest. So, we know it's possible to rank highly among the numerous chapters of the AAW. Much of the website content can be found in High Desert Turning.

So, now you ask, "What is in it for me?" Well, we will get to that. But first, our ask is this:

Submit a short snippet, article or outline of a shop tip or trick you use. You'll be surprised by how many folks will benefit from your personal idea or solution. Take 2, 3, 4 or 5 photos of your process, pieces or how your tip or trick comes together to illustrate how the membership can implement your idea in their shop. If appropriate, share credit where credit is due should you have benefited from a social media post, YouTube video or viewing an in-person demonstration.

Please consider contributing to the NMWT newsletter High Desert Turning! No tip too elementary and no trick too simple will go unpublished. We count on you to make our newsletter awesome. Please send your contribution to news@nmwoodturners.org

Here's what's in it for you:

You are inspiring dozens upon dozens of other turners implement shop solutions that ease their way and improve their flow and turning. You have ideas and solutions that many folks likely envy and would benefit from knowing. There's gratification in uplifting fellow turners.

The club has a large tote of exotic, seasoned and figured timber that was acquired during lockdown and you will be free to select a piece of your choice for every published tip or trick. The tote has wonderful turning stock and you can rifle through it for your choice.

NMWT's Logo Apparel

Caps (Baseball)	\$15
Long Sleeve Denim Shirt	\$30
Short Sleeve Denim Shirt	\$30
Short Sleeve Snap Shirt	\$30
Polo (golf) Shirt w/Pockets	\$30
T-Shirt V-Neck	\$20
Smocks	\$50

Items include embroidered NMWT logo

Names embroidered on shirts are additional \$5.00

Sizes XXL, 3XL, 4XL and up are an additional \$3.00

Contact: info@nmwoodturners.org

Get order forms at the club meetings or use the links below to access the order forms. Once completed, turn your form in to a board member with payment. *Orders are submitted on a quarterly basis.*

Full payment for an order will need to be submitted with each order form before it can be processed! Order placement cut off dates for each quarter will be as follows:



Order Info

NMWT Shirt/Cap Form

NMWT Smock Order Form

Quarter	Months	Order Meeting	Delivery Meeting
1st	Jan-Mar	Feb	Mar
2nd	Apr-Jun	May	Jun
3rd	Jul-Sept	Aug	Sept
4th	Oct-Dec	Nov	Dec

Discount & Rebate Partners

DAKOTA

Dakota Hardwoods -

Albuquerque, NM

3700 Singer Blvd. NE, Suite A, Albuquerque,
NM 87109

Office: 505-644-WOOD (9663)

Monday-Friday: 8:00am - 5:00pm

Saturday-Sunday: Closed

Say you are with the NMWT for a discount.



NMWT members receive Wholesale Prices. Rugby's has hardwoods, Thermofused Melamine, plywood, veneers, and furniture grade pine.

Penn State Industries

your wood turning & dust collection source | 1-800-377-7297

www.pennstateind.com

Register as a member of New Mexico Woodturner at Penn State Industries and automatically get 10% off (in addition to most other promos) your entire order !!! Yes! In effect, you will be doubling dipping on the discounts!!!

Register by sending an email to hy.d.tran@gmail.com with the name, address and email to which your Penn State catalogs are sent. Once you're registered, you'll automatically get 10% off every time you shop online (not applicable to phone or mail orders).



DENDROTECHNOLOGY
TIN SHED MILLWORKS

(505) 980-6161 www.dendrotsm.com

LIVE EDGE SLABS, TURNING BLANKS, CUSTOM MILLING

We offer 10% off our listed prices to members and give a free item from our oddments box or a turning blank to first time member customers.



**8100-M4 Wyoming Blvd. NE, #188
Albuquerque, NM 87113**
