



High Desert Turning

You're gonna love the way you turn.

You can do this. We guarantee it!

Membership details found within www.nmwoodturners.org



NMWT's Upcoming Monthly Meeting

Club Meetings are generally held 10:00 am to 12:30 pm on the first Saturday of the month



Who: John Cook

Topic: Kaleidoscopes

When: Feb 3rd @ 10:00 am MT

(In-person and online demo – Zoom session opens at 9:30 am)

Where: North Domingo Baca Multigenerational Center
7521 Carmel NE Albuquerque, NM 87113

**Please see next page for more information
regarding guest speaker(s)**

President's Turn

A u t h o r : T o m D u r g i n

New Mexico Woodturners,

What an honor it is to say thank you for being a part of New Mexico Woodturners! This club has great members, great meetings and great volunteers making it happen. We are so lucky to have each and every one of you, so thank you.

The holidays passed us by, the weather is chilly and wet, sounds like good time to warm up the shop and make some sawdust. What's on your to do list? What's on your turning list of things to learn. This is the perfect time for you to get out there and start working both of those lists.

Don't forget I threw out some challenges for us this year, have you thought about or acted on any of them?

1. Get involved, your board officers are due replacement at the end of 2024, WE NEED YOU
2. Beads of Courage boxes, make 2024 the biggest year for NMWT BOC donations
3. Pens for Troops, this is the year YOU turn 10, 20 or more
4. Expand and improve your turning, get involved, demo at the fair, attend club meetings and have fun

Thank you all, I'm honored to be the President of such a great club and look forward to the rest of 2024 with you.

Want to be more active in NMWT, let us know. We want you to play a part in what this club does, who this club reaches and advancing turners from every skill level. Lend a hand, you won't be sorry.



Thomas Durgin - President



NMWT's Upcoming Monthly Meeting



A u t h o r : L a r r y L i n f o r d

For the February 3 meeting, John Cook will show us how to make kaleidoscopes. John says he has only been turning a relatively short time, but has developed a passion for kaleidoscopes. He makes some with kits and others entirely by hand. All require turning a tube made of staves.



Homer Simpson loves woodturning! Can you spot the safety errors?

Future Programs/Activities

Mar 2nd	Hy Tran	Hold on to your work
Apr 6th	TBD	TBD
May 4th	TBD	TBD

NMWT Monthly Board Meeting

Open to all Members

When: Feb 21st, 2024 @ 7:30 pm

Contact info@nmwoodturners.org or
any board member for more info or
the Zoom link



Reflections from Last Month

E a s y W o o d & H u n t e r T o o l s

A u t h o r : L a r r y L i n f o r d

Easy Wood

Don started off by explaining that flat carbide tools are always presented at a 90 degree angle to the spinning wood. No need to angle downwards like you do with standard woodturning scrapers. Always keep the tool level.

Easy Wood tools have four basic cutters: Square, radius square (slightly convex edges with rounded corners), round and diamond shaped. All cutters are available in negative rake versions for cleaner cuts. The square cutter is for roughing blanks, the round one for finishing cuts, and the diamond is a detailer. For best results on acrylic, use the negative rake cutters.

Don demonstrated the cutting abilities of the various carbide cutters. The rougher can really hog the wood, and the finishing cutter leaves a smooth surface.

Tools come in several sizes: Beginner, Micro, Mini, and Full Size, with progressively longer handles. The shafts are square, which helps keep them flat on the tool rest and prevent rolling. The hollowing versions have bars that are curved or goose-necked at the business end, and are generally broader and flatter along the length except for the goose neck. On some tools, the bar has marks on the side that indicates the recommended overhang from the tool rest. All hollowers have round cutters.

Don was asked if cutters are interchangeable between tool manufacturers. His answer was "It depends." Can they be sharpened? Someone said they can be rubbed face down on a diamond stone to refresh cutting edge.

Hunter Tools

Don said he uses the Hunter tools if he's working with a lot of epoxy or acrylic. All cutters are round, and all are "cupped" or "dished." Because of this, the tools must be rolled to about a 45 degree angle or you will have a serious cut. The Hunter tools have round shafts to allow the rolling. The cutter heads are considerably smaller than those on the Easy Wood tools, and the cupped shape of the cutters prevents them from being sharpened. However they can be rotated on shaft to present a new edge periodically.

Don warned that the Hunter tools can be very aggressive, especially if presented straight in with the cutter wide open. Otherwise, these tools are very effective for removing wood, and can do so fairly smoothly.

Reflections from Last Month

E a s y W o o d & H u n t e r T o o l s

P h o t o s : N a n c y M a t t e s o n



Event

A u t h o r : D o n R o d e n

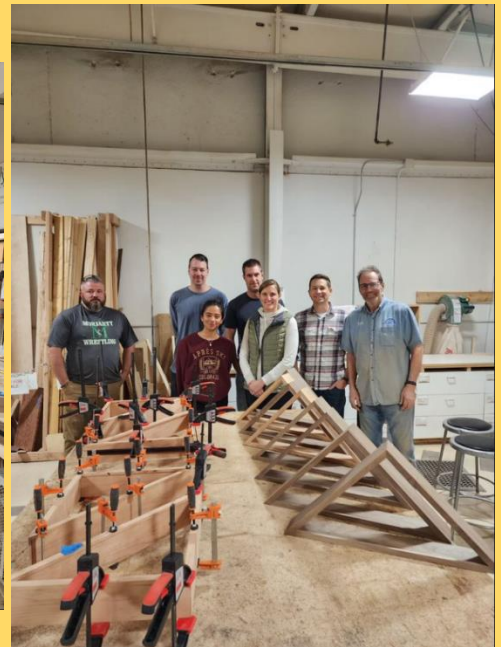
Veterans Day in the Shop

Last Sunday, a group of veterans gathered in Dovetail Community shop to assemble flag cases that will be donated to Santa Fe Nation Cemetery. Twelve cases were partially made and will be finished before heading to Santa Fe next month. I invite all Veterans to join fellow Veterans for an afternoon in the shop on the Second Sunday of each month. We are joining with other veterans and the friendship and working together on this project. I open the shop at noon, and we go as long as we want or until we reach a stopping point.

Contact me, or you can go to the Dovetail Community Workshop website and let us know you are coming. There is no cost for this except your time and sharing of your love of woodworking.



I would like to see many of you there next month.



Silent Auction

C o n t a c t : N M W T T r e a s u r e r

We love to have nifty items or pieces of timber that can be auctioned at our next meeting to support the Scholarship Fund.

Potential ideas include rough turned bowls, gouges gathering dust, seasoned blanks or turning accessories.

Your contributions go to benefit the **Red Hollenbach Scholarship Fund** which is used to reduce the cost for members to attend professional demonstrator's hands-on sessions.



If you are seeking an handcrafted donation for your charitable organization, please email a request to: info@nmwoodturners.org

NMWT on Social Media



The New Mexico Woodturners are on Facebook and YouTube



Facebook is just one way to share your work. However, it's also a great platform to ask questions, request constructive criticism and rub shoulders with other turners.

Various members of the NMWTs moderate the social media accounts and promote the craft and our club actively on these outlets.

A number of the Facebook group members are not NMWT members and that's okay! However, by our NMWT membership being active on social media we can also share the benefits of club membership, promote club activities and foster relationships with turners around the globe.

Please join the Facebook group, subscribe to the YouTube channel and watch us grow turning!

Newsletter Submission

Got a great idea, tip, or trick that you'd like to share?

We'd like to read about it.

What do you need to do?

Write up a description, brief or in-depth, and include a few photos if possible to better detail your idea.

If you like or use a certain webpage or a YouTube channel, please write about and site your source.

Please send articles to news@nmwoodturners.org

Disclaimer: Articles submitted aren't guaranteed a spot in the next issue, but they will be published if educational criteria is met and as it fits organizational needs.



Newsletter

Submission

Deadline

F

e

b

19th

Green Wood

The Green Wood Committee is always on the hunt for greenwood, and we all can agree, woodturners hate to see any good pieces go to a landfill. If you have some greenwood to share, please contact either chair member below for coordination. Our members love greenwood and there are endless possibilities and projects that can be done with it.



Green Wood Chairs

Joe "Stretch" Cole

480-216-3580

jt.cole@hotmail.com

Help Needed

Beads of Courage – NMWT's 2024 Challenge

Our Challenge and Goal:

For each club member to take the time and heart to make at least one Beads of Courage Box during 2023

What is Beads of Courage?

Beads of Courage (BOC) is the NMWT's Community Service Project.

Beads of Courage, Inc. is a 501 (c) (3) tax exempt organization working in partnership with the American Association of Woodturners (AAW).

[Official Guide to Beads of Courage – Woodturners Wanted](#)

This is Local!

Our Beads of Courage Bowls are taken directly to UNMH Children's Cancer Facility here in Albuquerque for local patients. However, some bowls can also be sent to a National collection point in Tucson, Arizona.

UNMH Children's Cancer Facility has been treating nearly one hundred seriously ill cancer youngsters each year. For each medical treatment a child receives, he or she gets a bead which they can then keep in their bowl, hence Beads of Courage Bowls. The children do receive a bag to put their beads in, but a Beads of Courage Bowl is far more special and reflective of the hard work to beat cancer!

NMWT currently produces approximately 8 bowls a year and it would be great to see that number increase exponentially.

For more information regarding the program, where to purchase beads, or where to deliver your finely crafted bowl, please see:



BOC Website



BOC Chair / Contacts

Scott Eckstein (NMWT BOC Contact)

505-270-0516

seemee911@gmail.com

Brianna Hayes (UNM Certified Life Specialist)

505-991-8501

bnhayes@salud.unm.edu

Abby Walker (UNM Certified Life Specialist)

505-991-8501

abCWalker@salud.unm.edu

Women in Turning



B y : C o u r t n e y G a l e

Turning a Sphere

Whether it's a captivating desk toy or a perfectly fitting lid for a tapered container, crafting spheres can be a satisfying and enjoyable wood turning project. In the upcoming February meeting, we will explore one particular technique for turning a sphere. The meeting will start at 1:00, February 18th, at Dovetail Community Workshop, 6102 Jefferson St NE, Suite D ABQ, NM 87109

While various methods exist for sphere turning, my go-to approach is often referred to as "The Shadow Method." This technique relies on achieving a visually close approximation of a sphere and involves rotating the rough sphere between turned cupped centers at different points. The turner essentially follows the "shadow" of the rough sphere, using a spindle gouge or skew to bring down the high spots. The result is a beautifully finished sphere that, when executed skillfully, closely resembles a true sphere.

It's important to note that this method may not be the ideal choice for those who prioritize mathematical precision and absolute perfection. The good news is that there is a multitude of methods to explore when you step up to the lathe to create a sphere. For those intrigued by alternatives, you can look into other techniques such as the template matching method, the octagon method, utilizing a jig, or even exploring an alternative shadow method involving a paper with drawn or printed circles on your lathe bed and a light positioned directly above your wood.

Stay tuned for next month's update to see the results of our meeting!



What we offer is access to the AAW site and wonderful monthly magazine, and a group of engaged and enthused turners!

Join the private

[Facebook](#) group page
[Women in Turning](#) to
get ideas & support.
AAW membership is
not required.

Women in Turning (WiT) -- The

AAW strives to deliver the
publications and services that our
members need to grow, connect,
explore, and thrive in the areas of
woodturning that are important
to them.

[Guest Membership](#)

**ALSO – join the AAW
with a guest
membership** so you
can see what else WiT
and AAW

By signing up for a complimentary Guest membership, you can have access to AAW resources for a full 60 days. You will be able to explore what the AAW has to offer, kick our tires, and hopefully decide to become a full-fledged, paid AAW member to benefit from everything the AAW has to offer.



L o c a l W i T C o n t a c t s

Patricia Apt (NMWT's WiT Liaison)	505-401-4442	papt625@gmail.com
Nancy Matteson	801-694-6866	namatteson@hotmail.com
Kay Grant	661-599-1832	wykayg@gmail.com
Erin Perry O'Donnell	505-926-1693	erin@dovetailworkshop.com

Women in Turning

Try out an American Association of Woodturners (AAW) membership for 3 months!!

We know you will be hooked!

AAW Membership Application

WIT (Women in Turning) is “dedicated to encouraging and assisting women in their pursuit of turning, sharing ideas and processes to further member’s skills and creativity, and increasing participation of women in the field of woodturning.”

The AAW WIT Committee agrees that to further this mission, we can work with chapters to help grow the number of women in AAW. Currently, women comprise less the 9% of AAW membership.

To encourage women to join AAW, the WIT Committee offers a limited number of WIT sponsored half price AAW memberships to women for a one-year, full "General" AAW membership.

Eligibility To be eligible, a grant recipient must be a woman and who has never previously been a member of AAW.

Process Only the chapter AAW WIT Liaison, Patricia Apt, chapter president or vice-president may request the grant. After we’ve received the application, the recipient will be sent a promotional code with instructions on how to use the code in applying for an AAW membership. If you have questions, please email wit@woodturner.org.

Limitations

If the nominee is a new member of a local chapter (within the last two months), WIT will pay 100% of the AAW membership.

If the nominee has been a member of a local chapter for more than two months, WIT will pay 50% of the AAW membership.

If the nominee is not a member of a local chapter, WIT will pay 50% of the AAW membership.

Grants are currently limited to no more than two women, per chapter, per quarter.

Quarters end January 31, April 30, July 31, and October 31. Based on the number of requests, this limitation may change.

We hope that this offer will be an incentive for new women woodturners to join your chapter.

[Click Here for AAW Specials for WIT](#)



Beginner's Turn**Practice and Muscle Memory in Woodturning****A u t h o r : S t e v e J o h n s o n**

The beginning of a new year begins with an article for beginners about something that happens to us all every now and again. That is that we, for some reason, don't touch a lathe for a couple of weeks or months. In my case, a couple of months now. Since before the Holidays. I think the last items I turned were a couple of bird house ornaments for family and friends. Since then the lathe has not even been turned on.

What happens when this amount of time goes by without turning? One loses what is called muscle memory. The hours of continuous practice that we, in the beginning, are passionate about, builds up an automatic, deep seated, feel for woodturning and all the various aspects of it. From just knowing how to mount some new project, to how the turning tools operate, how they work, and how one fails with them. From design considerations to finishing, it all takes practice and repeated actions. Just like any professional athlete, who practices constantly to not only get better, but to keep the skills that they have already obtained. And the more complex your turning is, the more tools you have become accustomed to using, the more time it takes at the lathe, to learn and maintain proficiency.

All is not lost however if one hasn't turned for a while. The techniques and methods that you have developed aren't totally gone, just a little "rusty" as it were. All it takes to get your mojo back is just a little more practice before starting something new and very important. Try turning something out of scrap wood for instance. No scrap wood? Go down to your closest Big Box Store and buy a 2x4 that looks pretty good and take it home and do some spindle turning with it. Bowls? Do the same with a 2x12. No pressure, just mount it on the lathe and do some turning. Don't be anxious about ruining these pieces, the object is to just get back into the swing of things.

You will find that after an hour or two of this kind of low pressure, worry free practice, your skills will come back and you are good to go forward with something near and dear to your heart. This includes sharpening as well. Try sharpening each type of tool you use a lot, even if it is already sharp. That way when you are in the thick of a new project, you will start with all sharp tools and won't have to waste time relearning sharpening.

And remember,

Have Fun with your Lathe



Article

Hold on to your work! A preview for 3/2/24 meeting

A u t h o r : H y T r a n

As I prepare for the March 2 2024 meeting, I'd like some pre-meeting feedback: Please answer the poll here <https://forms.office.com/r/OPRZsff8ja> by 2/14/2024. Responses are anonymous.

Holding your work is one of the keys to successful woodturning. First of all, good workholding technique helps your safety. Your lathe can spin your wood blank to more than 3000 revolutions per minute (depending on your lathe), and having the wood fly off is more excitement than you'd like. Second, for a good cut, you want your work to be stable, so that your tool can cut the wood fibers cleanly.

While we talk about the ABCs of turning (anchor, bevel, cut), we also must think about holding the work to the lathe.

When you get two woodturners together, you'll probably get three opinions—so, tell me which opinions you'd like to see for the March meeting!

For a fastenating time (OK, I promise, I'll limit the bad jokes), give me your feedback and come to the meeting!

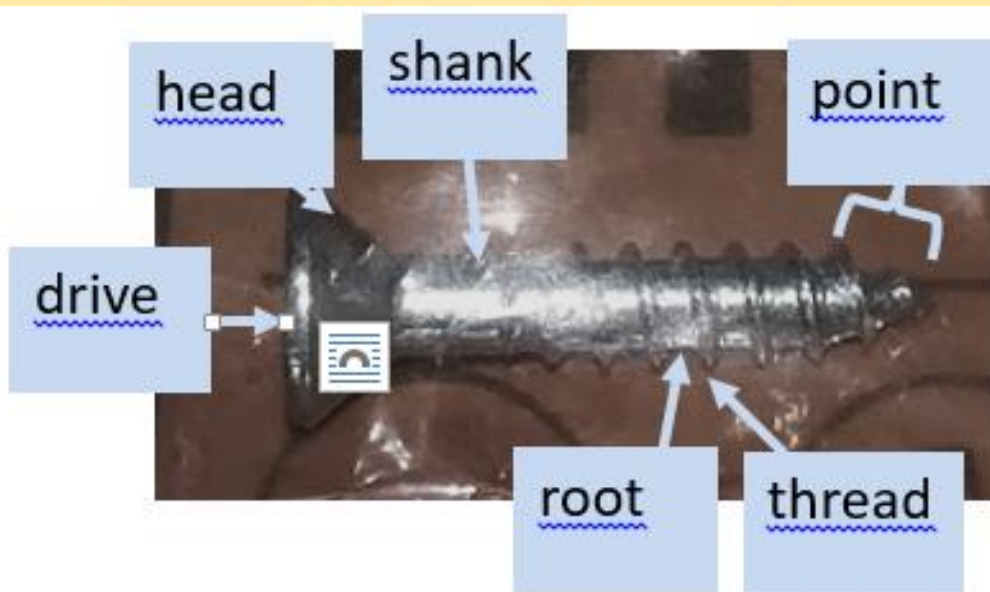


Photo Gallery



Instant



Tom Durgin Pecan, Jatoba,
Amethyst, Pyrite



Tom Durgin Ash, Elm
Cabochon, Green Dye



Tom McLarty Salt and Pepper Ambrosia Maple

Please send gallery photos by the 3rd Saturday of the month to
gallery@nmwoodturners.org

Photo Gallery



Instant

B e a d s o f C o u r a g e



Bob Rocheleau Beads of Courage Jar Cedar

Please send gallery photos by the 3rd Saturday of the month to
gallery@nmwoodturners.org

These photos can be found in the Galleries section on NMWT's webpage

Photo Gallery



Instant



Dennis Cahil Open Segmented Bowl Red Oak and Ash



Scott Eckstein Lidded Box, Cherry with Turquoise Inlay

Please send gallery photos by the 3rd Saturday of the month to
gallery@nmwoodturners.org

Photo Gallery



Instant



Scott Eckstein Cedar Bean Pot



John Spitzenberger Curley Maple Dish



Scott Eckstein Oak and Maple Ornament

Please send gallery photos by the 3rd Saturday of the month to
gallery@nmwoodturners.org

Photo Gallery



Instant



John Spitzenberger Tagua Nuts with Ebony Accents in Curley Maple Dish



Pat Beatty Elm Bowl



David Croxton Hollow Form Spalted Maple

Please send gallery photos by the 3rd Saturday of the month to
gallery@nmwoodturners.org

Photo Gallery



Instant



David Croxton Basket Illusion Hard Maple and Copper Metal Leaf



David Croxton Basket Illusion Hard Maple, Gold Foil

Please send gallery photos by the 3rd Saturday of the month to
gallery@nmwoodturners.org

Photo Gallery



Instant



David Croxton Pen Carbon Fiber Tubes



Pat Beatty Russian Olive Handle Screwdriver

Please send gallery photos by the 3rd Saturday of the month to
gallery@nmwoodturners.org

Photo Gallery



Instant



Rex Funk Hollow Form Monkey
Pod and Tiger Wood Accent



Hy Tran Bottle Stoppers Plywood
with Brass Insert



Hy Tran Bowl, Olive Burl

Please send gallery photos by the 3rd Saturday of the month to
gallery@nmwoodturners.org

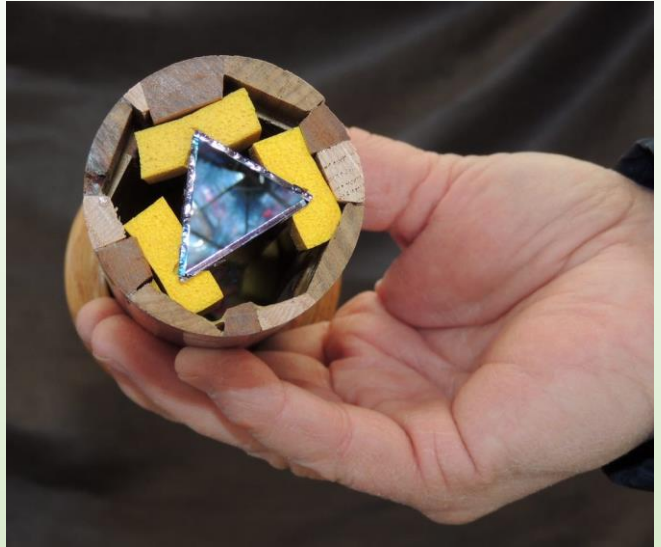
Photo Gallery



Instant



James Redstrom Large Bowl,
Pine



John Cook Kaleidoscope
Interior



John Cook Kaleidoscope Various Woods,
Interchangeable Image Cartridges

Please send gallery photos by the 3rd Saturday of the month to
gallery@nmwoodturners.org

Photo Gallery



Instant



Ralph Watts Bowl, Poplar Pyrography, Copic Dyes, Inks

Please send gallery photos by the 3rd Saturday of the month to
gallery@nmwoodturners.org

Marketplace



Attached are 3 photos of an End Vise I have FOR SALE. The description of the vise is on a photo. This Vise has never been out of the box and is listed at \$170.00 from Woodriver. I am asking \$85.00 (50%) for it. Rocky 505-235-9002

I'm no longer doing shows... haven't done that in years. But I still have some show-setup things, like lightweight tables, a couple pedestals, table covers and runners, and probably some other things squirrelled away. If you're interested, let me know and I'll dig it out and see just what's there. It's in storage, and I'd like to see it put to use again. Free.

Bob Clancy

bob@southmtpages.com

505-238-6809



Item #1:

Baxter Thread Master made and sold by 'Best Wood Tools' at <https://bestwoodtools.store.turbify.net/bathma.html>. This is possibly the finest threading system for wood lathes. I purchased with grand plans a few years back, but have yet to use it, so it's gotta go. Here's a review of the system <https://sep.turbifycdn.com/ty/cdn/bestwoodtools/BTM-REVIEW.pdf>. Has the 16 pitch head and includes the auxiliary slide. This is for lathes with a swing between 25"-28" but you can purchase a base from them to fit your lathe. Sells for \$900 new plus shipping. Selling for ~~\$675~~ or best offer. \$595 obo.



Item #2:

Bowl coring system Bowlsaver Max 3 by Woodcut with Max Light laser guide. Brand new, never used, gotta make space. Fits 1" diameter tool rest banjo. Paid \$800, will take ~~\$525~~ or best offer. \$475 obo.



**PRICE
REDUCED**

Rick Judd

612-280-8300

See our Marketplace section on our website for better photos

Marketplace

Title of Your Ad Here

Description of your Ad

Picture of your
Advertisement

Contact info for your Ad

I have 5 segmenting sleds that I don't need anymore and would like to get rid of. They are for 8, 10, 12, 16 and 18 segments. They may need some modifications depending on grooves on the table saw spacing. If interested contact Bob (Rocky) Rocheleau at (505) 235-9002.

Rough-Turned Bowls for Sale

David Hallman has hundreds of rough-turned bowls, in various woods, including cherry, china berry, walnut, sycamore, mimosa, sassafras, and mesquite. Some are natural edge (with and without bark), others are cut edge. Sizes range from four inches up to fifteen inches wide, shallow up to six inches tall. Asking one dollar up to twenty five dollars for the larger sizes. Volume discounts. Located in Silver City.

Contact David at (575)654-0299
or mesquitedave@gmail.com



Bridge for Sale



This is a sample marketplace posting.

We welcome members to use this space for anything related to woodturning. There is no charge for listing an item. Ads will run for about one month.

To request a listing, send item and contact info to sale@nmwoodturners.org. Your ad will be reviewed and posted as quickly as possible.

*** You must be an NMWT member to post ads ***

See our Marketplace section on our website for better photos

Please notify sale@nmwoodturners.org once item has sold

2022 Elected Officers, Directors & Committee Chairs

President



Tom Durgin
505-688-1369

Vice President



Larry Linford
505-870-1601

Treasurer



Woody Stone
828-808-7876

Secretary



Sally Breedon
505-352-0159

State Fair



Bill Mantelli
505-400-0266

Membership



Tom McLarty
505-298-3790

Webmaster



Dennis Cahill
505-620-2508

Lead Video



Derek Roff
505-438-1820

Email Administrator



Hy Tran
505-459-8132

Member-at-Large



Ron Bahm
505-881-8845

Equipment & Workshops Beads of Courage Chair



Scott Eckstein
505-270-0516

Logistics



Bob "Rocky" Rocheleau
505-235-9002

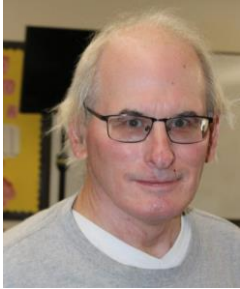
SEEKING

Green wood help

Please speak to a board member regarding any of these positions

2022 Elected Officers, Directors & Committee Chairs

Raffle Coordinator



Dean Cross
575-644-8945

Special Workshops



John Ellis
505-463-7750

Green Wood Manager(s)



Green Wood Manager(s)



Joe "Stretch" Cole
480-216-3580

Past President



Rick Judd
612-280-8300

Newsletter Designer



Traci Durgin
news@nmwoodturners.org
505-688-1370

Apparel Manager



Cindy Edgecomb
505-615-7307

Photographer

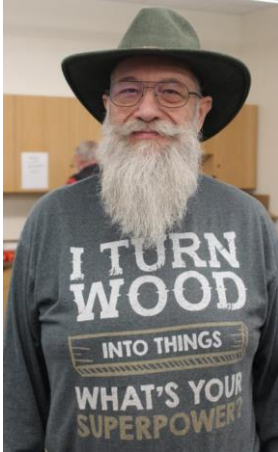


Nancy Matteson
gallery@nmwoodturners.org
801-694-6866

Mentors

Bill Zerby

505-263-6632
Rio Rancho – NM
528 & Southern



Basic spindle turning
& tool sharpening

Scott Kershaw

406-274-2931
Rio Rancho –
Unser & Westside



Basic woodturning skills to
include bowls, plates, platters,
spindle projects; Green wood
processing, coring and twice
turning; Tool sharpening and
lathe maintenance

Hy Tran

505-459-8132
Albuquerque –
Paseo & Ventura



Beginner and Novice
woodturning

John Ellis

505-463-7750
Placitas



Basic turning, plates,
tools & handles

Larry Linford

505-870-1601
Albuquerque



Basket illusion turning
and embellishment

Bob “Rocky” Rocheleau

505-235-9002
Albuquerque – NE Heights



Segmenting and bowl
turning

Free to NMWT members: give a Mentor a call!

*****WE ARE ALWAYS SEEKING NEW MENTORS*****

Mentors

Rick Judd

612-280-8300
East Mountain



Hollow forms, bowls,
lidded boxes, burls,
natural edge

Ron Bahm

505-881-8845
Albuquerque – NE
Heights



Pen turning, beginning
segment construction,
beginner woodturning

Ray Davis

505-221-4622
Rio Rancho, NM – NW side
raylindavis@r-davis.com



Open and closed Segment
bowls. Stave Bowls, Bowl
turning. Pens.

I have a heated and a/c shop
with 2 lathes ready to go.

Don Roden

763-234-5780
Dovetail Workshop



Skew, carbide tools,
bowls and advanced
turning techniques, like
epoxy turning, finials, and
offset turning

YOUR NAME

Your phone #
Your location



What can you offer?
Help us fill this space

YOUR NAME

Your phone #
Your location



What can you offer?
Help us fill this space

Free to NMWT members: give a Mentor a call!

*****WE ARE ALWAYS SEEKING NEW MENTORS*****

Quick Reference List

(Printer Friendly Version)

2022 NMWT Elected Officers, Directors & Committee Chairs


news@nmwoodturners.org

President	Tom Durgin	505-688-1369	Newsletter Editor	Help Needed	
Vice President	Larry Linford	505-870-1601	Newsletter Designer	Traci Durgin	
Treasurer	Woody Stone	828-808-7876	Photographer(s)	Nancy Matteson	801-694-6866
Secretary	Sally Breeden	505-352-0159	Raffle Coordinator	Dean Cross	575-644-8945
State Fair	Bill Mantelli	505-400-0266			
Membership	Tom McLarty	505-298-3790	Equip/Workshops	Scott Eckstein	505-270-0516
Webmaster	Dave Stein	505-266-0356	Green Wood	Help Needed	
Lead Video	Derek Roff	505-438-1820	Green Wood	Joe "Stretch" Cole	480-216-3580
Email Administrator:	Hy Tran	505-459-8132	Logistics	Bob Rocheleau	505-235-9002
Member-at-Large	Ron Bahm	505-881-8845	Special Workshops	John Ellis	505-463-7750
Past President	Rick Judd	612-280-8300	Apparel Manager	Cindy Edgecomb	505-615-7307

Quick Reference List for Mentors

Free to NMWT members: give a Mentor a call!

Bill Zerby Rio Rancho – NM 528 & Southern	➡	505-263-6632	➡	Basic spindle turning & tool sharpening
Hy Tran Albuquerque – Paseo & Ventura	➡	505-459-8132	➡	Beginner and novice woodturning
Don Roden Dovetail Workshop	➡	763-234-5780	➡	Skew, carbide tools, bowls and advanced turning techniques, like epoxy turning, finials, and offset turning
Larry Linford Albuquerque	➡	505-870-1601	➡	Basket illusion turning and embellishment
Rick Judd East Mountain	➡	615-280-8300	➡	Hollow forms, bowls, lidded boxes, burls, natural edge
Ron Bahm Albuquerque – NE Heights	➡	505-881-8845	➡	Pen turning, beginning segment construction, beginner woodturning
Bob "Rocky" Rocheleau Albuquerque – NE Heights	➡	505-235-9002	➡	Segmenting and bowl turning
Ray Davis Rio Rancho – NW side.	➡	505-221-4622	➡	Open and closed Segment bowls. Stave Bowls, Bowl turning. Pens.
Scott Kershaw Rio Rancho – Unser & Westside	➡	406-274-2931	➡	Basic woodturning skills to include bowls, plates, platters, spindle projects; Green wood processing, coring and twice turning; Tool sharpening and lathe maintenance.

Members are always welcome to contact the people on the mentor list for guidance to better turning ideas and techniques

WE ARE ALWAYS SEEKING NEW MENTORS

Membership Renewal

Membership Dues

Membership dues renewals are due on or before the last day of the month in which the member's current membership term expires. Members who do not renew within thirty (30) days after their membership expiration date will no longer have access to member privileges and will no longer receive the monthly newsletter. Annual dues are as follows:



One year: \$30 for an individual; \$35 for a family
 Two Years: \$55 for an individual; \$65 for a family
 Three Years: \$75 for an individual; \$90 for a family
 Lifetime: \$300 for an individual; \$350 for a family

Additional Fees

1. An individual member who subsequently adds family members will pay the difference between the individual dues and the family dues rate for the remainder of that membership year (i.e., a one-year individual member adding family members would pay an additional \$5.00 dues for the remainder of the membership year).
2. A member requiring a mailed copy of the monthly newsletter will pay an additional \$10 per year to cover cost of mailing.

Renew Online

We are very pleased to announce that you can now pay your membership dues with a credit card on the NMWT website at:

<https://www.nmwoodturners.org/>.

To access online dues payment, simply go to the new "Membership" tab near the top of the homepage and select "Pay Online" from the drop-down menu. This will take you to a secure website managed by Converge, our credit card service provider. There you will find a series of "Buy Buttons" that are clearly labeled with each membership dues option. Simply select the dues option that you want and then hit the "Checkout" button.

You will need to fill in all of the contact information on the payment processing page so that the Treasurer can confirm that our membership records are up to date and also so that he can send your new membership card by regular mail. Also, due to some reporting limitations of the Converge website, you will need to once again select the dues option you want from the drop-down menu labeled "Items Purchased". Fill in your credit card information and hit the "Submit Payment" button to complete the transaction. You should receive an "Order Confirmation" with full details of your purchase by e-mail, and the Treasurer will mail your membership card to you. That's all there is to it!

[Web-Based Credit Card Dues Payment Now Available](#)

Renew by Mail

You can, of course, still mail a check along with current contact and e-mail information to our **Treasurer, Woody Stone, at 2 Blue Corn Ct. Sandia Park, NM 87047.**

The easy way to do that is to go to that same new "Membership" tab on the NMWT homepage and select "Membership Form" from the drop-down menu.

Fill in the form (**PLEASE PRINT CLEARLY**) and mail it to Woody with your check. Should you have any issues or questions regarding the new Credit Card payment system or if you are not sure if your membership expires at the end of 2020, feel free to call Woody at 828-808-7876 or e-mail him at eesphoto492@gmail.com.



Scan our QR code to access our webpage



How to Contribute to High Desert Turning

The NMWT's newsletter editor has submitted High Desert Turning to the AAW's 2020 and 2021 Best Chapter Newsletter Contest. Unfortunately for the NMWT, High Desert Turning has not been selected in the top 3 chapters either year. However, the NMWT chapter website won 1st prize in 2020 for the Best Chapter Website Contest. So, we know it's possible to rank highly among the numerous chapters of the AAW. Much of the website content can be found in High Desert Turning.

So, now you ask, "What is in it for me?" Well, we will get to that. But first, our ask is this:

Submit a short snippet, article or outline of a shop tip or trick you use. You'll be surprised by how many folks will benefit from your personal idea or solution. Take 2, 3, 4 or 5 photos of your process, pieces or how your tip or trick comes together to illustrate how the membership can implement your idea in their shop. If appropriate, share credit where credit is due should you have benefited from a social media post, YouTube video or viewing an in-person demonstration.

Please consider contributing to the NMWT newsletter High Desert Turning! No tip too elementary and no trick too simple will go unpublished. We count on you to make our newsletter awesome. Please send your contribution to news@nmwoodturners.org

Here's what's in it for you:

You are inspiring dozens upon dozens of other turners implement shop solutions that ease their way and improve their flow and turning. You have ideas and solutions that many folks likely envy and would benefit from knowing. There's gratification in uplifting fellow turners.

The club has a large tote of exotic, seasoned and figured timber that was acquired during lockdown and you will be free to select a piece of your choice for every published tip or trick. The tote has wonderful turning stock and you can rifle through it for your choice.

NMWT's Logo Apparel

Caps (Baseball)	\$15
Long Sleeve Denim Shirt	\$30
Short Sleeve Denim Shirt	\$30
Short Sleeve Snap Shirt	\$30
Polo (golf) Shirt w/Pockets	\$30
T-Shirt V-Neck	\$20
Smocks	\$50

Items include embroidered NMWT logo

Names embroidered on shirts are additional \$5.00

Sizes XXL, 3XL, 4XL and up are an additional \$3.00

Contact: info@nmwoodturners.org

Get order forms at the club meetings or use the links below to access the order forms. Once completed, turn your form in to a board member with payment. *Orders are submitted on a quarterly basis.*

Full payment for an order will need to be submitted with each order form before it can be processed! Order placement cut off dates for each quarter will be as follows:



Order Info

NMWT Shirt/Cap Form

NMWT Smock Order Form

Quarter	Months	Order Meeting	Delivery Meeting
1st	Jan-Mar	Feb	Mar
2nd	Apr-Jun	May	Jun
3rd	Jul-Sept	Aug	Sept
4th	Oct-Dec	Nov	Dec

Discount & Rebate Partners

DAKOTA

Dakota Hardwoods -

Albuquerque, NM

3700 Singer Blvd. NE, Suite A, Albuquerque,
NM 87109

Office: 505-644-WOOD (9663)

Monday-Friday: 8:00am - 5:00pm

Saturday-Sunday: Closed

Say you are with the NMWT for a discount.



NMWT members receive Wholesale Prices. Rugby's has hardwoods, Thermofused Melamine, plywood, veneers, and furniture grade pine.

Penn State Industries

your wood turning & dust collection source | 1-800-377-7297

www.pennstateind.com

Register as a member of New Mexico Woodturner at Penn State Industries and automatically get 10% off (in addition to most other promos) your entire order !!! Yes! In effect, you will be doubling dipping on the discounts!!!

Register by sending an email to hy.d.tran@gmail.com with the name, address and email to which your Penn State catalogs are sent. Once you're registered, you'll automatically get 10% off every time you shop online (not applicable to phone or mail orders).



DENDROTECHNOLOGY
TIN SHED MILLWORKS

(505) 980-6161 www.dendrotsm.com

LIVE EDGE SLABS, TURNING BLANKS, CUSTOM MILLING

We offer 10% off our listed prices to members and give a free item from our oddments box or a turning blank to first time member customers.



**8100-M4 Wyoming Blvd. NE, #188
Albuquerque, NM 87113**
