



High Desert Turning

You're gonna love the way you turn.

You can do this. We guarantee it!

Membership details found within www.nmwoodturners.org



NMWT's Upcoming Monthly Meeting

Club Meetings are generally held 10:00 am to 12:30 pm on the first Saturday of the month



Who: NMWT Members

Topic: Holiday Party & 2025 Planning

When: Dec 7th @ 10:00 am MT

(In-person only)

Where: North Domingo Baca Multigenerational Center
7521 Carmel NE Albuquerque, NM 87113

Please see next page for more information regarding guest speaker(s)

President's Turn

A u t h o r : T o m D u r g i n

New Mexico Woodturners,

Hard to believe this is my last note to you as President of NMWT. It seems both like forever and that the time flew by!! I have been honored to serve NMWT as an officer for the past several years. There has been some work, but I think together we (that's all of you and your hard working board) have done some really good things for NMWT. We are now a part of Albuquerque Fiber Arts, we've had another awesome airport display and the State Fair is back on track after Covid among many other things. None of this happens without your support, you volunteering to help at these events, setting up, demonstrating and giving a bit of your time and skill.

You didn't get lucky enough to get rid of me, you'll still see Traci and I working your newsletter and me sitting behind the laptop at club meetings. One regret for all my time as President is that I didn't get to know more of you better. There was so much to do at each club meeting, I'm hoping more of you will lend a hand so that Mark our new President will be free to mingle and talk to you during meeting setup time. Mark is going to be great leading us into the future!

Be ready to bring your ideas for demos in 2025 and of course our annual gift exchange. There are going to be so many different items from wood, to tools to who knows. See you on December 7th.

NMWT appreciates you and again I thank you for allowing me to serve NMWT!

Tom Durgin
NMWT President



**Thomas Durgin -
President**

NMWT's Upcoming Monthly Meeting



A u t h o r : L a r r y L i n f o r d

There will be no demonstration for the December meeting. Instead, the 12th meeting of the year is traditionally reserved for two special activities.

First, we select the demo topics for the coming year (in this case, 2025). This is a process that begins with a brief discussion of topics presented during the last year, and a list of topics suggested for last year but not presented. Members then suggest additional topics to add to the list. Then, after a frustratingly long period of discussion, we vote on the topics each of us likes best. Then we tally the votes and the Vice President for the coming year will attempt to line up presenters to demonstrate the topics with 10 highest vote counts. (Remember, we normally also have a guest master turner and the December meeting to round out the year.)

Second, we have our Annual Gift Exchange. In this joyous activity, a ticket is issued to everyone who brings a gift. (NO WRAPPING, PLEASE!) The tickets are then drawn from the canister one at a time, and the person with that number ticket picks from the gift tables. The club adds to the gifts and some members bring more than one gift, so it's not unusual to leave with two or three or even more gifts. It's a lot of fun.

What kind of gifts? you may ask. We suggest something of approximately \$25 or more value, and that has some connection to turning wood.

For example: Wood; blanks; turned objects; partially turned objects; crushed stone; tools in good working condition, bottles of CA and/or wood glue; CDs, books, DIY jigs and fixtures; finishes; dyes; gift cards; items of apparel (nothing embarrassing, please), etc.

Please remember, there will be no raffle and there will be no Instant Gallery. (If you bring a piece for the Instant Gallery, it may be mistaken for a gift - so don't.)

Future Programs/Activities

Jan 4 th	NMWT Members	Jigs and Fixtures
Feb 1 st	TBD	TBD
Mar 2 nd	TBD	TBD

NMWT Monthly Board Meeting

Open to all Members

When: Dec 23, 2024 @ 7:30 pm

Contact info@nmwoodturners.org or
any board member for more info or
the Zoom link

Reflections from Last Month



Select Methods of Inlay

Presented by Jim McLain

Jim demonstrated the methods he uses for small pebble, carved brick and crushed stone inlay. He pointed out that he's been doing inlay most of his 32 year career. He began his demonstration with a series of slides showing examples of these methods.

Turquoise and pyrite occur together in nature and have similar chemical make-up. Turquoise stones with pyrite inclusions give a sparkle to the stonework, whether in pebble or crushed form. Jim often will add a little crushed pyrite to his crushed turquoise for inlay for extra bling. They can be crushed together, but Jim crushes them separately and adds just the right amount of pyrite to the turquoise.

For crushed turquoise, Jim uses the back of a cold chisel and hammer and crushes the turquoise against a steel plate. He uses a ball peen or other smaller hammer. He places the turquoise in a 1 1/2 to 2 inch PVC coupler before lightly hammering. He holds his hand over the top of the coupler and around the chisel to keep the turquoise from flying all over the shop. Once you break it down a little you can just move the coupler around the steel plate and lightly hammer all the turquoise prior to screening. He scrapes the bits into a set of graduated sieves (sizes 8, 14, 20 and 35) to separate the stones into desired sizes. Sieves can be obtained from Fischer Scientific Products (www.fishersci.com), and Jim has been known to make his own to get the exact sizes of stones he needs. Also see "sand sifters" or "soil sifters" on Amazon.com.

When separating the stone by size, Jim does not use the finest grade, which will pass through the finest sieves. It is basically powder. He prefers his the individual stones to be apparent, and powder can mask that. He noted that if you do use the powder, you have to use thin or super thin CA glue for it to soak into the stones.

Jim says turquoise should be purchased from reputable dealers. A lot of what's sold on the Internet is howlite, which is basically a white stone with turquoise dye only on the surface. It's very inexpensive, which is your first clue it's not turquoise. Campito turquoise is from Mexico and is good to use. Jim also uses Sleeping Beauty and other older turquoise if he can find it.

Filling cracks in wood

For inlaying in cracks in the wood, Jim will enhance (widen) the crack with a 702 bit or bur in an NSK Presto handpiece. He seals pretty much the entire exterior with shellac before inlaying to prevent any glue overage from spreading into the wood and staining it. He carves the cracks 1/8" to 3/16" deep, and undercuts the walls of the cracks so the stones can go slightly under the overhang. He always seals the wood prior enhancing the crack. If the seal is added later, it will get into the crack and the CA glue may not bond.

Reflections from Last Month**Select Methods of Inlay****Presented by Jim McLain**

Jim wears food service gloves. Use debonder or acetone to separate any bonded fingers. Protect your eyes from glue fumes by wearing a respirator with chemical grade filters. Jim uses a 3M Versaflo respirator, as it's one of the few that can be equipped with chemical grade filters.

He adds the stone to the crack a little at a time and tamps it down with his fingers to make sure it goes deep into the crack and also to prevent any from protruding above the margins of the crack. He pays special attention to the stones nearest the edges of the cracks as that's where gaps are most likely to occur. He rearranges the stones and/or adds more, sometimes smaller, stones to fill any gaps. He then applies Star Bond Heavy Thin CA glue into the crack, using a super fine applicator tip. He puts in just enough to bond the stones to the wood and each other. He uses CA activator. He follows with medium glue, filling the crack to the level of the wood margins. After large inlays, Jim lets the piece sit overnight for the glue to cure, even with the activator.

Jim does his final turning after inlaying, as it gives a smoother surface. He prefers the transitions between wood and turquoise be undetectable by feel. He notes that if some stones are dislodged this way, use the medium CA glue to fill in the crack.

For voids going all the way through the wood, Jim will inflate a balloon inside the vessel to where the surface of the balloon is even with the interior surface of the wall. (If you inflate it too much, it can protrude through the void.) The glue will stick to the balloon, but you will turn away the remnants later. To save turquoise, partially fill the void with saw dust (preferable of the same wood) before inlaying the stone. Press the sawdust into place with a dental pick to insure 100% coverage (but being careful not to pop the balloon). Jim uses Super Fast Thin CA Glue on the sawdust. Use larger stones in larger voids.

The piece is turned to 1/2" to 5/8" thickness before the inlay, then turned again inside and out after the inlay.

"Bricks" (or cabs)

Jim uses this method for adding "brick-shaped" stones to his Chaco Series pieces. However, the same method will allow inlaying of cabs or even more irregular stones in a vessel wall. He has used turquoise, desert agate, fossils, coral, and other stones for the bricks.

Cut the stones first. Jim uses a lapidary saw and a diamond flat lap to cut and grind the bricks (which are roughly 1/2" x 1/4", and about 3/16" thick. Jim labels the stones and the location of the hole to be carved with matching numbers.

Reflections from Last Month**Select Methods of Inlay****Presented by Jim McLain**

Jim carves a hole in the wood surface using an NSK Presto carver, but a Vortex carver without the tiny bolt holding the turbine in place works better because that bolt gets in the way and can mar the edges of the hole. The hole has to be the same length and height as the stones carved into the wooden surface surrounding the hole so the brick fits the pattern. The hole should be deep enough that the face of the brick is slightly below the surface of the wood. Try each stone in its hole without glue to ensure fit. Expand hole as necessary. If hole is a little too big, cut a replacement. If the hole is too deep, fill partially with sawdust as described above. If the edges or corners of the stone protrude, trim them off with the NSK Presto.

River Inlay

Jim also inlays small whole stones in deeper, wider cracks and voids, and creates patterns of his own. Here he uses small tumbled pebbles, perhaps 1/8" to 1/4", but of uniform size per vessel. These can be turquoise or other stones. These are glued into the "river" or pattern whole, without crushing, and give a sparkly effect, like stones under water. Don't fill the river to the surface, and don't top off with a final layer of glue. The irregular surface is what is sought. River gravel or tumbled stones work well for these designs. For larger "rivers," Jim uses beach stones, each one set individually with medium CA glue

Turbines

The NSK Presto and the Vortex carvers normally are powered by compressed air, and can spin at speeds approaching 400,000 rpm, 10 times the speed of a Dremel style tool. Jim has found that this speed allows him to cut very straight lines like the masonry effect of his Chaco Series vessels. Depending on the wood, the speed of the bur can burn the edges of the cut, turning them black.

Finishing

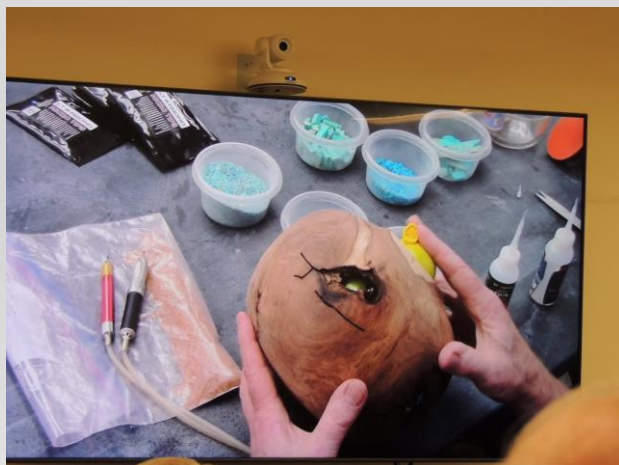
Jim finishes the outside of softer woods with a negative rake carbide scraper held in the sheer scraper mode, turning at 1000-1500 rpm. He then sands the vessel starting with 120 grit sandpaper on harder woods to prepare for applying his finish and insure the wood and stone are level with one another so that the margins between them cannot be detected. He proceeds through the grits, sometimes as high as 600.

Jim uses CA glue as a finish on the glossy portions of his pieces, dividing the application into 2 or 3 sections to prevent tackiness in application. He applies glue on the vessel and on a paper towel as he wipes it on. He then sprays activator on another paper towel held very close to the turned piece. Some of the fumes from the activator will reach the piece and act like directly applied activator. One this sets up, he can wipe the vessel with the paper towel.

Reflections from Last Month

Select Methods of Inlay

Presented by Jim McLain

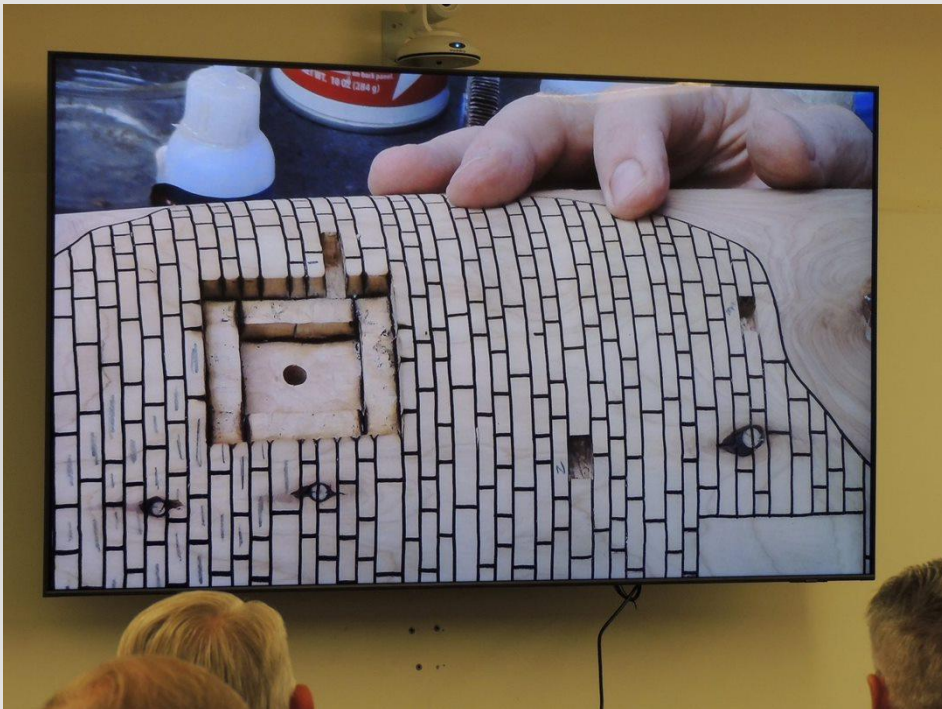
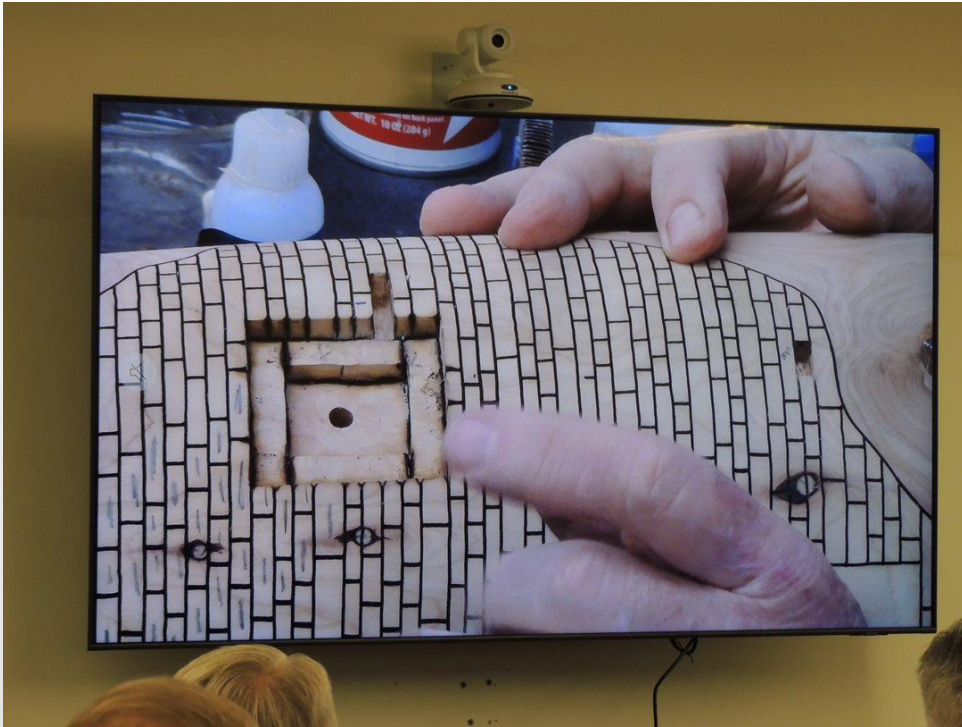


(Continued on the next page)

Reflections from Last Month



Select Methods of Inlay Presented by Jim McLain



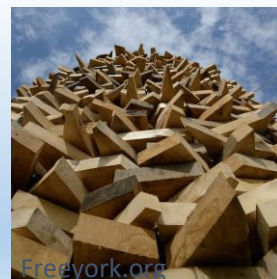
Silent Auction

C o n t a c t : N M W T T r e a s u r e r

We love to have nifty items or pieces of timber that can be auctioned at our next meeting to support the Scholarship Fund.

Potential ideas include rough turned bowls, gouges gathering dust, seasoned blanks or turning accessories.

Your contributions go to benefit the **Red Hollenbach Scholarship Fund** which is used to reduce the cost for members to attend professional demonstrator's hands-on sessions.



If you are seeking an handcrafted donation for your charitable organization, please email a request to: info@nmwoodturners.org

NMWT on Social Media



The New Mexico Woodturners are on Facebook and YouTube



Facebook is just one way to share your work. However, it's also a great platform to ask questions, request constructive criticism and rub shoulders with other turners.

Various members of the NMWTs moderate the social media accounts and promote the craft and our club actively on these outlets.

A number of the Facebook group members are not NMWT members and that's okay! However, by our NMWT membership being active on social media we can also share the benefits of club membership, promote club activities and foster relationships with turners around the globe.

Please join the Facebook group, subscribe to the YouTube channel and watch us grow turning!

Newsletter Submission

Got a great idea, tip, or trick that you'd like to share?

We'd like to read about it.

What do you need to do?

Write up a description, brief or in-depth, and include a few photos if possible to better detail your idea.

If you like or use a certain webpage or a YouTube channel, please write about and site your source.

Please send articles to news@nmwoodturners.org

Disclaimer: Articles submitted aren't guaranteed a spot in the next issue, but they will be published if educational criteria is met and as it fits organizational needs.



Newsletter

Submission

Deadline

D

e

c

23rd



Green Wood

I will be working at cutting what I have into more usable sizes and shapes. Some will be in the gift exchange at the Dec. meeting



Green Wood Chairs

Joe "Stretch" Cole

480-216-3580

jt.cole@hotmail.com

Dan Dahl

505-553-8036

ded87111@gmail.com

Beads of Courage – NMWT's 2024 Challenge

Our Challenge and Goal:

For each club member to take the time and heart to make at least one Beads of Courage Box during 2023

What is Beads of Courage?

Beads of Courage (BOC) is the NMWT's Community Service Project. Beads of Courage, Inc. is a 501 (c) (3) tax exempt organization working in partnership with the American Association of Woodturners (AAW).

[Official Guide to Beads of Courage – Woodturners Wanted](#)

This is Local!

Our Beads of Courage Bowls are taken directly to UNMH Children's Cancer Facility here in Albuquerque for local patients. However, some bowls can also be sent to a National collection point in Tucson, Arizona.

UNMH Children's Cancer Facility has been treating nearly one hundred seriously ill cancer youngsters each year. For each medical treatment a child receives, he or she gets a bead which they can then keep in their bowl, hence Beads of Courage Bowls. The children do receive a bag to put their beads in, but a Beads of Courage Bowl is far more special and reflective of the hard work to beat cancer!

NMWT currently produces approximately 8 bowls a year and it would be great to see that number increase exponentially.

For more information regarding the program, where to purchase beads, or where to deliver your finely crafted bowl, please see:



BOC Website



BOC Chair / Contacts

Scott Eckstein (NMWT BOC Contact)

505-270-0516

seemee911@gmail.com

Brianna Hayes (UNM Certified Life Specialist)

505-991-8501

bnhayes@salud.unm.edu

Abby Walker (UNM Certified Life Specialist)

505-991-8501

abCWalker@salud.unm.edu

Article



The Little Gray Oak Vessel

Rick O’Ryan, Silver City

This little gray oak vessel is going in the mail to Tom Durgin as a thanks for all he's done for me, and for the club during his reign as president. And because when I cleared my stuff out of the Sunport display, I knocked one of his pieces to the floor. His piece survived ok but I still kicked myself for not being more careful. This has served as a therapy piece to get me through this week. It's gray oak, rough turned sometime in the last 30 years. It's been on the shelf for a while, in that neverland of work in progress with plenty of other company. It is an unusual one in that neither the end grain where the branch went into it, nor the smaller area where the branch left the burl, had checks that opened up into cracks. It's 5-3/4 x 5-3/4", #1336. Finished with Defoil, a tung and other distillates oil, three coats and a buff. I chose to keep the surface available to my hands and eyes, without gloss reflections. And, like every piece I have ever done, I could have worked on it some more. The little bridge over the bark hole survived thanks to a healthy dose of ca glue.



Article



The Little Gray Oak Vessel

Rick O’Ryan, Silver City



I am using an adapted Lyle captured arm boring system with a swan neck Stewart/Sorby holder for the cutting tip, and an adapted Trent camera system to show where the cutting tip is.

Article



Inexpensive Shopmade Chatter Tool

Written by Bob Amarant and provided by David Croxton

The New Jersey Woodturners is an educational and charitable organization. Like many other chapters, we contribute to various charities. Our favorite activity is turning spinning tops. We make hundreds per year and 100% of the donations collected go to the

Accompanying Video!

Bob Amarant has created a video that illustrates some of the finer points of making a chatter tool. To view the video, visit tiny.cc/chattertool or scan the QR code.



Children's Specialized Hospital of New Jersey. We have roughly thirty members who participate in this outreach effort.

We add texture to the tops with a variety of tools, including chatter, spiral, and knurling tools. Commercially available chatter tools can cost up to \$100. I find making my own tools is a great way to spend a few hours in the shop and save some money in the process. This article details the process of making a shopmade chatter tool.

Materials

When I make tools, my goal typically is to use components already on hand to save money. In this case, you'll need a length of steel rod 4" to 6" (10cm to 15cm) long and at least 1/2" (13mm) in diameter. Steel rods are available in the big box stores in 12" (30cm) lengths. In my case, I simply used a hex-head machine bolt that was 1/2" diameter

and 4" long. For the actual cutting tool, I repurposed a jigsaw blade, and to hold it in place, I used a cap screw 1/2" long x 1/4" (6mm) diameter with 20 tpi (teeth per inch). I also turned a length of wood for a handle and used a piece of 1" (25mm) inside diameter (ID) copper pipe for a ferrule (Photo 1).

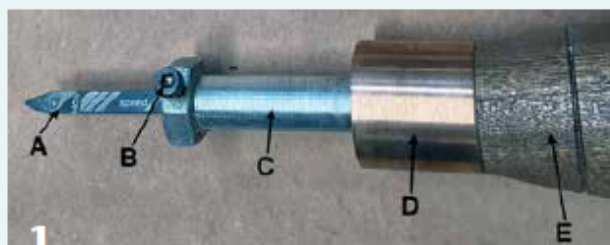
You will also need a 1/4" twist drill, a center drill, a 1/2" twist drill, and a 1/4" x 20 tap to cut threads, along with a #7 drill for the tap. *Note: The video referenced at the start of this article shows an alternate method of holding the blade to the handle using two hose clamps, requiring less metalworking.*

Process

Chuck the metal rod or bolt with a maximum of 1" overhang for rigidity and concentricity. Drill a small starter hole/dimple using the center drill (Photo 2). If you don't have a center drill, use a 1/8" (3mm) twist drill to form a dimple on one end. Once the dimple is formed, drill a 1/4"-diameter hole about 1 1/4" (32mm) deep (Photo 3). Keep the lathe speed low, about 500 rpm. A drop of oil while drilling metal helps to lubricate the cutting and evacuate the chips.

Once you have drilled into the end of the bolt (or rod), use a drill press to drill a side hole for the cap screw (Photo 4). The cap screw will hold the jigsaw blade in place. Use a #7 drill bit to prepare for the thread tap. Cut, or tap, the threads in the hole (Photo 5). If you have never cut threads before, refer to my companion video for helpful tips.

For the cutter, I started with a jigsaw blade that was 4" long, put it in my metal vise, and used locking pliers to snap it in half. Don't forget your safety glasses! Grind the teeth off using a grinder or benchtop belt sander to form



Chatter tool parts

A: repurposed jigsaw blade, B: cap screw, C: bolt, D: ferrule, E: woodturned tool handle.

Drill hole for the blade



Use a center drill to create a dimple, or starting point for the drill bit.



At a slow lathe speed, drill a hole in the end of the bolt (or rod) to accept the chatter blade.

Drill and tap for cap screw



The author drills a hole and then taps threads for the cap screw, which will hold the blade in place during use.

Shape jigsaw blade



A jigsaw blade will serve as the chatter tool cutter. Grind off its teeth and shape it using a grinder or belt sander.

either a pointed or rounded profile on one end (Photo 6). Commercial chatter tools feature an angled bend, but this detail is not necessary. Grind the other end to fit snugly in the $\frac{1}{4}$ " hole in the bolt or rod.

Turn a handle

I'm a big believer of making your own tool handles. Over time, you can save hundreds of dollars and it's another good excuse to use your lathe. Plus, handles are great beginner spindle projects.

As with any spindle-turning project, mark the centers on each end and initially turn between centers. Form a tenon on one end to fit into a scroll chuck, and then mount the blank in the chuck.

At the tailstock end, form another tenon to accept the copper pipe to be used as a ferrule. Once the ferrule is in place, use a drill chuck and a $\frac{1}{2}$ " twist

drill to drill a hole $1\frac{1}{2}$ " (38mm) deep. The ferrule will be glued on later.

Bring up your live center and rough out the spindle. Then shape the blank so it is both attractive and comfortable for your hand (Photo 7). Consider adding a few accents with a point tool or perhaps some beads. Sand and finish with your favorite finish. I usually use boiled linseed oil for tool handles. I've also used my favorite EEE polish combined with a friction polish if I want a shiny finish.

Part the handle from the lathe, sand the end, and apply finish to that area. I use five-minute epoxy to attach both the ferrule and the bolt (or rod). When the glue has cured, insert the blade and lock it in place with the cap screw.

In use

The chatter tool creates patterns in the wood because its flexible metal blade skips on and off, cutting intermittently.

These tools work best on endgrain. Our club uses hard maple for our tops.

I have found that presenting the blade slightly below center and pointing it down to about the 8:00 position produces good chatter (Photos 8, 9). Other designs can be achieved by pressing just the tip or side of the blade into the wood. If you hear the blade make a screeching sound, you are probably getting good results. Experiment with different blade lengths, lathe speeds, and presentation angles. There are numerous videos on YouTube demonstrating various possibilities. ■

Bob Amarant is president of the New Jersey Woodturners, which meets at the Essex County Environmental Center in Roseland, New Jersey. Bob has produced hundreds of videos on his YouTube channel, "Bob's Woodshop Bob Amarant." Email Bob at bobamarant@gmail.com.

Turn a tool handle



Turn a handle with a ferrule. A hole drilled into the end will accept the bolt, or rod.

Chatter tool presentation



The author presents the side of the flexible blade to the hardwood endgrain, producing intermittent cuts. Adding color accentuates the chatter marks beautifully.





Women in Turning

Women in Turning's Segmenting Workshop with Ray Davis

A u t h o r : C o u r t n e y G a l e

On Tuesday, October 29th, Ray Davis hosted a segmenting workshop for WIT members to learn the basics of segmented turning and work to complete a small segmented closed form. Ray, a seasoned woodturner and long-time member of our local woodturning club, generously shared his skills and knowledge with the eager participants, guiding us through the fascinating art of segmented turning.

Many of the things Ray explained to his group of beginner segmenting students was how to calculate the angle and number of segments necessary as well as the width and cut length. Using Ray's table saw jigs to cut the correct number of segments at the proper angles, we then cleaned up the segment's edges by shaking them in an enclosed plastic container. A tip that saved a lot of time compared to sanding the edges of every individual piece! Our day at Ray's was full of many tips and tricks like this one. We worked quickly to glue our segments flat and with no vertical gaps. Mistakes were made, but Ray was prepared to advise on how to fix a poorly glued ring using small dowels and a disk sander. Once the glue from our rings was dry, Ray ran them through his drum sander so they would be properly flat and able to be glued without horizontal gaps.

Layer upon layer we built up the bottom half of the segmented form. We glued the first layer on a walnut glue block fixed to a face plate and used a sandpaper board to flatten the bottom side of the rings that did not get flattened by the drum sander. This same process was repeated for the top half of the segment. While the whole form could have been assembled and turned at the end of the glueing

(Continued on the next page)

What we offer is access to the AAW site and wonderful monthly magazine, and a group of engaged and enthused turners!

Join the private

[Facebook](#) group page [Women in Turning](#) to get ideas & support. AAW membership is not required.

Women in Turning (WiT) -- The

AAW strives to deliver the publications and services that our members need to grow, connect, explore, and thrive in the areas of woodturning that are important to them.

[Guest Membership](#)

ALSO – join the AAW with a guest membership so you can see what else WiT and AAW

By signing up for a complimentary Guest membership, you can have access to AAW resources for a full 60 days. You will be able to explore what the AAW has to offer, kick our tires, and hopefully decide to become a full-fledged, paid AAW member to benefit from everything the AAW has to offer.



L o c a l W i T C o n t a c t s

Courtney Gale (NMWT's WiT Liaison)	505-410-1678	courtneyngale@gmail.com
Nancy Matteson	801-694-6866	namatteson@hotmail.com
Kay Grant	661-599-1832	wykayg@gmail.com
Erin Perry O'Donnell	505-926-1693	erin@dovetailworkshop.com



Women in Turning

Women in Turning's Segmenting Workshop with Ray Davis

A u t h o r : C o u r t n e y G a l e

process, we chose to glue the bottom most layers, shape on the lathe, and then glue two more layers and shape those to avoid deep hollowing. Both insides of the top and bottom were sanded and finished before combining. Once the top and bottom were glued up together, the outside was shaped carefully down to it's final shape. These forms were finished with a combination of Ray's lacquer and sanding sealer mix, Myland's friction polish, and Ack's Abrasive sanding paste.

At the end of our day with Ray, we left with beautiful works-in-progress and a wealth of knowledge and experience which we know is just the tip of the iceberg of the world of segmented turning! While it's one thing to watch videos online, read articles, and follow patterns, having this personal instruction from an experienced turner is absolutely invaluable. Ray guided us through what can be a complicated process with patience and ease. He knew how to prepare us for pitfalls new segmented turners fall into and how to avoid those dreaded gaps. The expertise and generosity Ray possesses is just one of the many reasons why our club mentors are so important to growing the skills and confidence of our members. Us WIT members are grateful for our time and excited to try out our new skills in our next segmenting project!



(Continued on the next page)

Women in Turning

Women in Turning's Segmenting Workshop with Ray Davis

A u t h o r : C o u r t n e y G a l e



Women in Turning

Try out an American Association of Woodturners (AAW) membership for 3 months!!

We know you will be hooked!

AAW Membership Application

WIT (Women in Turning) is “dedicated to encouraging and assisting women in their pursuit of turning, sharing ideas and processes to further member’s skills and creativity, and increasing participation of women in the field of woodturning.”

The AAW WIT Committee agrees that to further this mission, we can work with chapters to help grow the number of women in AAW. Currently, women comprise less the 9% of AAW membership.

To encourage women to join AAW, the WIT Committee offers a limited number of WIT sponsored half price AAW memberships to women for a one-year, full "General" AAW membership.

Eligibility To be eligible, a grant recipient must be a woman and who has never previously been a member of AAW.

Process Only the chapter AAW WIT Liaison, Courtney Gale, chapter president or vice-president may request the grant. After we’ve received the application, the recipient will be sent a promotional code with instructions on how to use the code in applying for an AAW membership. If you have questions, please email wit@woodturner.org.

Limitations

If the nominee is a new member of a local chapter (within the last two months), WIT will pay 100% of the AAW membership.

If the nominee has been a member of a local chapter for more than two months, WIT will pay 50% of the AAW membership.

If the nominee is not a member of a local chapter, WIT will pay 50% of the AAW membership.

Grants are currently limited to no more than two women, per chapter, per quarter.

Quarters end January 31, April 30, July 31, and October 31. Based on the number of requests, this limitation may change.

We hope that this offer will be an incentive for new women woodturners to join your chapter.

[Click Here for AAW Specials for WIT](#)



Photo Gallery



September Instant Gallery

B e a d s o f C o u r a g e



We apologize for the lack of names and description

Please send gallery photos by the 3rd Saturday of the month to
gallery@nmwoodturners.org

These photos can be found in the Galleries section on NMWT's webpage

Photo Gallery



September Instant Gallery

B e a d s o f C o u r a g e



We apologize for the lack of names and description

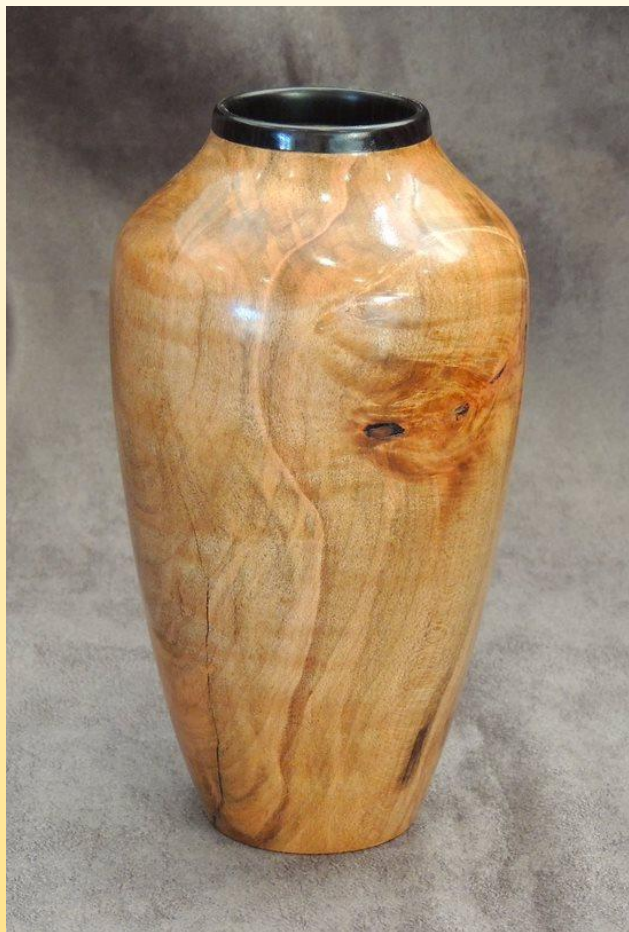
Please send gallery photos by the 3rd Saturday of the month to
gallery@nmwoodturners.org

These photos can be found in the Galleries section on NMWT's webpage

Photo Gallery



October Instant Gallery



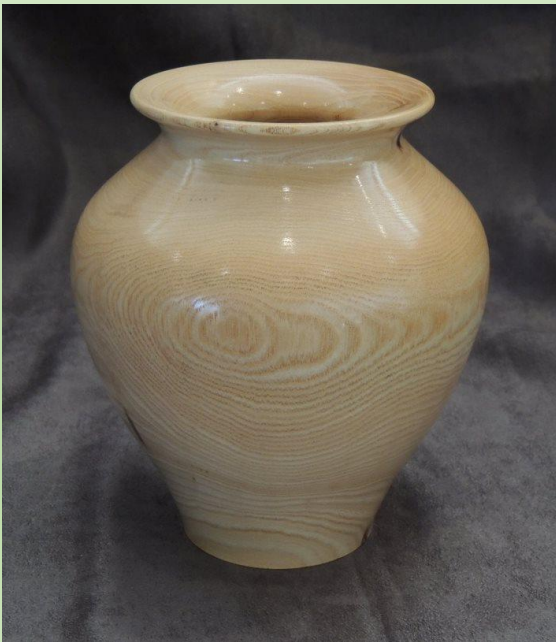
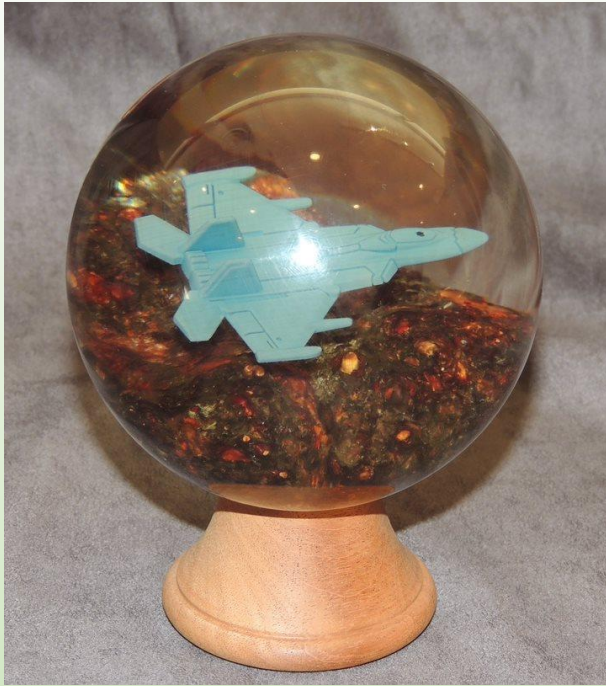
We apologize for the lack of names and description

Please send gallery photos by the 3rd Saturday of the month to
gallery@nmwoodturners.org

Photo Gallery



October Instant Gallery



We apologize for the lack of names and description

Please send gallery photos by the 3rd Saturday of the month to
gallery@nmwoodturners.org

Photo Gallery



October Instant Gallery



We apologize for the lack of names and description

Please send gallery photos by the 3rd Saturday of the month to
gallery@nmwoodturners.org

These photos can be found in the Galleries section on NMWT's webpage

Photo Gallery



October Instant Gallery



We apologize for the lack of names and description

Please send gallery photos by the 3rd Saturday of the month to
gallery@nmwoodturners.org

Photo Gallery



September Instant Gallery



We apologize for the lack of names and description

Please send gallery photos by the 3rd Saturday of the month to
gallery@nmwoodturners.org

Photo Gallery



September Instant Gallery



We apologize for the lack of names and description

Please send gallery photos by the 3rd Saturday of the month to
gallery@nmwoodturners.org

Marketplace

Title of Your Ad Here

Description of your Ad

Picture of your
Advertisement

Contact info for your Ad

Title of Your Ad Here

Description of your Ad

Picture of your
Advertisement

Contact info for your Ad

Title of Your Ad Here

Description of your Ad

Picture of your
Advertisement

Contact info for your Ad



Bridge for Sale

This is a sample marketplace posting.

We welcome members to use this space for anything related to woodturning. There is no charge for listing an item. Ads will run for about one month.

To request a listing, send item and contact info to sale@nmwoodturners.org. Your ad will be reviewed and posted as quickly as possible.

*** You must be an NMWT member to post ads ***

See our Marketplace section on our website for better photos

Please notify sale@nmwoodturners.org once item has sold

2024 Elected Officers, Directors & Committee Chairs

President



Tom Durgin
505-688-1369

Vice President



Larry Linford
505-870-1601

Treasurer



Woody Stone
828-808-7876

Secretary



Sally Breedon
505-352-0159

State Fair



Bill Mantelli
505-400-0266

Membership



Tom McLarty
505-298-3790

Webmaster



Dennis Cahill
505-620-2508

Lead Video



Derek Roff
505-438-1820

Email Administrator



Hy Tran
505-459-8132

Member-at-Large



Mark Miller
505-350-8584

Equipment & Workshops Beads of Courage Chair



Scott Eckstein
505-270-0516

Logistics



Bob "Rocky" Rocheleau
505-235-9002

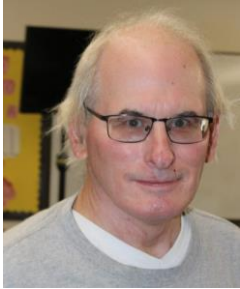
SEEKING

Green wood help

Please speak to a board member regarding any of these positions

2024 Elected Officers, Directors & Committee Chairs

Raffle Coordinator



Dean Cross
575-644-8945

Special Workshops



John Ellis
505-463-7750

Green Wood Manager(s)



Joe "Stretch" Cole
480-216-3580

Green Wood Manager(s)



Dan Dahl
505-553-8036

Past President



Rick Judd
612-280-8300

Newsletter Designer



Traci Durgin
news@nmwoodturners.org
505-688-1370

Apparel Manager



Dave Croxton
505-803-5521

Fiber Arts Rep



Shana Lane
505-270-6442

Photographer

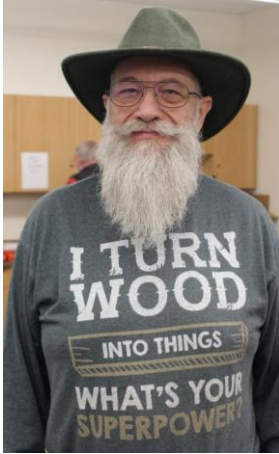


Nancy Matteson
gallery@nmwoodturners.org
801-694-6866

Mentors

Bill Zerby

505-263-6632
Rio Rancho – NM
528 & Southern



Basic spindle turning
& tool sharpening

Scott Kershaw

406-274-2931
Rio Rancho –
Unser & Westside



Basic woodturning skills to
include bowls, plates, platters,
spindle projects; Green wood
processing, coring and twice
turning; Tool sharpening and
lathe maintenance

Hy Tran

505-459-8132
Albuquerque –
Paseo & Ventura



Beginner and Novice
woodturning

John Ellis

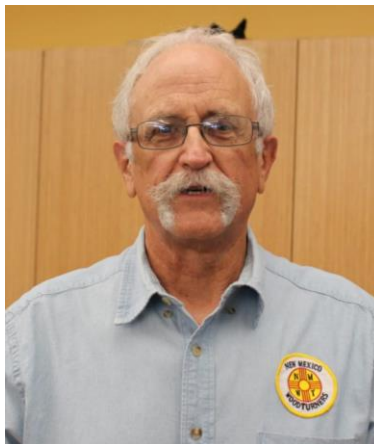
505-463-7750
Placitas



Basic turning, plates,
tools & handles

Larry Linford

505-870-1601
Albuquerque



Basket illusion turning
and embellishment

Bob “Rocky” Rocheleau

505-235-9002
Albuquerque – NE Heights



Segmenting and bowl
turning

Free to NMWT members: give a Mentor a call!

*****WE ARE ALWAYS SEEKING NEW MENTORS*****

Mentors

Rick Judd

612-280-8300
East Mountain



Hollow forms, bowls,
lidded boxes, burls,
natural edge

Ron Bahm

505-881-8845
Albuquerque – NE
Heights



Pen turning, beginning
segment construction,
beginner woodturning

Ray Davis

505-221-4622
Rio Rancho, NM – NW side
raylindavis@r-davis.com



Open and closed Segment
bowls. Stave Bowls, Bowl
turning. Pens.

I have a heated and a/c shop
with 2 lathes ready to go.

Don Roden

763-234-5780
Dovetail Workshop



Skew, carbide tools,
bowls and advanced
turning techniques, like
epoxy turning, finials, and
offset turning

YOUR NAME

Your phone #
Your location



What can you offer?
Help us fill this space

YOUR NAME

Your phone #
Your location



What can you offer?
Help us fill this space

Free to NMWT members: give a Mentor a call!

*****WE ARE ALWAYS SEEKING NEW MENTORS*****

Quick Reference List

(Printer Friendly Version)

2024 NMWT Elected Officers, Directors & Committee Chairs


news@nmwoodturners.org

President	Tom Durgin	505-688-1369	Newsletter Editor	Help Needed	
Vice President	Larry Linford	505-870-1601	Newsletter Designer	Traci Durgin	
Treasurer	Woody Stone	828-808-7876	Photographer(s)	Nancy Matteson	801-694-6866
Secretary	Sally Breeden	505-352-0159	Raffle Coordinator	Dean Cross	575-644-8945
State Fair	Bill Mantelli	505-400-0266	Fiber Arts Rep	Shana Lane	505-270-6442
Membership	Tom McLarty	505-298-3790	Equip/Workshops	Scott Eckstein	505-270-0516
Webmaster	Dave Stein	505-266-0356	Green Wood	Dan Dahl	505-553-8036
Lead Video	Derek Roff	505-438-1820	Green Wood	Joe "Stretch" Cole	480-216-3580
Email Administrator:	Hy Tran	505-459-8132	Logistics	Bob Rocheleau	505-235-9002
Member-at-Large	Mark Miller	505-350-8584	Special Workshops	John Ellis	505-463-7750
Past President	Rick Judd	612-280-8300	Apparel Manager	Dave Croxton	505-803-5221

Quick Reference List for Mentors

Free to NMWT members: give a Mentor a call!

Bill Zerby Rio Rancho – NM 528 & Southern	➡	505-263-6632	➡	Basic spindle turning & tool sharpening
Hy Tran Albuquerque – Paseo & Ventura	➡	505-459-8132	➡	Beginner and novice woodturning
Don Roden Dovetail Workshop	➡	763-234-5780	➡	Skew, carbide tools, bowls and advanced turning techniques, like epoxy turning, finials, and offset turning
Larry Linford Albuquerque	➡	505-870-1601	➡	Basket illusion turning and embellishment
Rick Judd East Mountain	➡	615-280-8300	➡	Hollow forms, bowls, lidded boxes, burls, natural edge
Ron Bahm Albuquerque – NE Heights	➡	505-881-8845	➡	Pen turning, beginning segment construction, beginner woodturning
Bob "Rocky" Rocheleau Albuquerque – NE Heights	➡	505-235-9002	➡	Segmenting and bowl turning
Ray Davis Rio Rancho – NW side.	➡	505-221-4622	➡	Open and closed Segment bowls. Stave Bowls, Bowl turning. Pens.
Scott Kershaw Rio Rancho – Unser & Westside	➡	406-274-2931	➡	Basic woodturning skills to include bowls, plates, platters, spindle projects; Green wood processing, coring and twice turning; Tool sharpening and lathe maintenance.

Members are always welcome to contact the people on the mentor list for guidance to better turning ideas and techniques

WE ARE ALWAYS SEEKING NEW MENTORS

Membership Renewal

Membership Dues

Membership dues renewals are due on or before the last day of the month in which the member's current membership term expires. Members who do not renew within thirty (30) days after their membership expiration date will no longer have access to member privileges and will no longer receive the monthly newsletter. Annual dues are as follows:



One year: \$30 for an individual; \$35 for a family
 Two Years: \$55 for an individual; \$65 for a family
 Three Years: \$75 for an individual; \$90 for a family
 Lifetime: \$300 for an individual; \$350 for a family

Additional Fees

1. An individual member who subsequently adds family members will pay the difference between the individual dues and the family dues rate for the remainder of that membership year (i.e., a one-year individual member adding family members would pay an additional \$5.00 dues for the remainder of the membership year).
2. A member requiring a mailed copy of the monthly newsletter will pay an additional \$10 per year to cover cost of mailing.

Renew Online

We are very pleased to announce that you can now pay your membership dues with a credit card on the NMWT website at:

<https://www.nmwoodturners.org/>.

To access online dues payment, simply go to the new "Membership" tab near the top of the homepage and select "Pay Online" from the drop-down menu. This will take you to a secure website managed by Converge, our credit card service provider. There you will find a series of "Buy Buttons" that are clearly labeled with each membership dues option. Simply select the dues option that you want and then hit the "Checkout" button.

You will need to fill in all of the contact information on the payment processing page so that the Treasurer can confirm that our membership records are up to date and also so that he can send your new membership card by regular mail. Also, due to some reporting limitations of the Converge website, you will need to once again select the dues option you want from the drop-down menu labeled "Items Purchased". Fill in your credit card information and hit the "Submit Payment" button to complete the transaction. You should receive an "Order Confirmation" with full details of your purchase by e-mail, and the Treasurer will mail your membership card to you. That's all there is to it!

[Web-Based Credit Card Dues Payment Now Available](#)

Renew by Mail

You can, of course, still mail a check along with current contact and e-mail information to our **Treasurer, Woody Stone, at 2 Blue Corn Ct. Sandia Park, NM 87047.**

The easy way to do that is to go to that same new "Membership" tab on the NMWT homepage and select "Membership Form" from the drop-down menu.

Fill in the form (**PLEASE PRINT CLEARLY**) and mail it to Woody with your check. Should you have any issues or questions regarding the new Credit Card payment system or if you are not sure if your membership expires at the end of 2020, feel free to call Woody at 828-808-7876 or e-mail him at eesphoto492@gmail.com.



Scan our QR code to access our webpage



How to Contribute to High Desert Turning

The NMWT's newsletter editor has submitted High Desert Turning to the AAW's 2020 and 2021 Best Chapter Newsletter Contest. Unfortunately for the NMWT, High Desert Turning has not been selected in the top 3 chapters either year. However, the NMWT chapter website won 1st prize in 2020 for the Best Chapter Website Contest. So, we know it's possible to rank highly among the numerous chapters of the AAW. Much of the website content can be found in High Desert Turning.

So, now you ask, "What is in it for me?" Well, we will get to that. But first, our ask is this:

Submit a short snippet, article or outline of a shop tip or trick you use. You'll be surprised by how many folks will benefit from your personal idea or solution. Take 2, 3, 4 or 5 photos of your process, pieces or how your tip or trick comes together to illustrate how the membership can implement your idea in their shop. If appropriate, share credit where credit is due should you have benefited from a social media post, YouTube video or viewing an in-person demonstration.

Please consider contributing to the NMWT newsletter High Desert Turning! No tip too elementary and no trick too simple will go unpublished. We count on you to make our newsletter awesome. Please send your contribution to news@nmwoodturners.org

Here's what's in it for you:

You are inspiring dozens upon dozens of other turners implement shop solutions that ease their way and improve their flow and turning. You have ideas and solutions that many folks likely envy and would benefit from knowing. There's gratification in uplifting fellow turners.

The club has a large tote of exotic, seasoned and figured timber that was acquired during lockdown and you will be free to select a piece of your choice for every published tip or trick. The tote has wonderful turning stock and you can rifle through it for your choice.

NMWT's Logo Apparel

Caps (Baseball)	\$15
Long Sleeve Denim Shirt	\$30
Short Sleeve Denim Shirt	\$30
Short Sleeve Snap Shirt	\$30
Polo (golf) Shirt w/Pockets	\$30
T-Shirt V-Neck	\$20
Smocks	\$50

Items include embroidered NMWT logo

Names embroidered on shirts are additional \$5.00. Sizes XXL, 3XL, 4XL and up are an additional \$3.00.

Contact: info@nmwoodturners.org

Get order forms at the club meetings or use the links below to access the order forms. Once completed, turn your form in to a board member with payment. *Orders are submitted on a quarterly basis.*

Full payment for an order will need to be submitted with each order form before it can be processed! Order placement cut off dates for each quarter will be as follows:



Order Info

NMWT Shirt/Cap Form

NMWT Smock Order Form

Quarter	Months	Order Meeting	Delivery Meeting
1st	Jan-Mar	Feb	Mar
2nd	Apr-Jun	May	Jun
3rd	Jul-Sept	Aug	Sept
4th	Oct-Dec	Nov	Dec

Discount & Rebate Partners



CRAFT SUPPLIES USA
THE WOODTURNERS CATALOG

www.woodturnerscatalog.com

CSUSA offers a discount to members on large orders and has a club support program. Visit the web site or phone Kathy Lawrence at 1-800-551-8876

DAKOTA

Dakota Hardwoods -

Albuquerque, NM

3700 Singer Blvd. NE, Suite A, Albuquerque, NM 87109

Office: 505-644-WOOD (9663)

Monday-Friday: 8:00am - 5:00pm

Saturday-Sunday: Closed

Say you are with the NMWT for a discount.

Penn State Industries

your wood turning & dust collection source | 1-800-377-7297

www.pennstateind.com

Register as a member of New Mexico Woodturner at Penn State Industries and automatically get 10% off (in addition to most other promos) your entire order !!! Yes! In effect, you will be doubling dipping on the discounts!!!

Register by sending an email to hy.d.tran@gmail.com with the name, address and email to which your Penn State catalogs are sent. Once you're registered, you'll automatically get 10% off every time you shop online (not applicable to phone or mail orders).

(505) 924-2270

RUGBY®

Architectural Building Products

NMWT members receive Wholesale Prices. Rugby's has hardwoods, Thermofused Melamine, plywood, veneers, and furniture grade pine.



DENDROTECHNOLOGY

TIN SHED MILLWORKS

(505) 980-6161 www.dendrotsm.com

LIVE EDGE SLABS, TURNING BLANKS, CUSTOM MILLING

We offer 10% off our listed prices to members and give a free item from our oddments box or a turning blank to first time member customers.



**8100-M4 Wyoming Blvd. NE, #188
Albuquerque, NM 87113**
