



High Desert Turning

You're gonna love the way you turn.

You can do this. We guarantee it!

Membership details found within www.nmwoodturners.org



NMWT's Upcoming Monthly Meeting

Club Meetings are generally held 10:00 am to 12:30 pm on the first Saturday of the month



Who: Club Members

Topic: Gift Exchange and 2024 Planning

When: Dec 2nd @ 10:00 am MT

(In-person and online demo – Zoom session opens at 9:30 am)

Where: North Domingo Baca Multigenerational Center
7521 Carmel NE Albuquerque, NM 87113

**Please see next page for more information
regarding guest speaker(s)**

President's Turn

A u t h o r : T o m D u r g i n

Fellow Woodturners,

It is that time of year to think about things we are thankful for, if you've read my thoughts here before you'll know I'm always thankful for you and our awesome club, the New Mexico Woodturners. I'm thankful for all you turn, for your contributions to what we do be it coming to a meeting, turning at the fair or just being a member of NMWT.

We've got one more chance to see each other in a group before 2024 and I'm looking forward to that. Our planning meeting and club gift exchange is next on Saturday 2 Dec. There is not going to be any zoom so we need to see you in person this time. Planning for next year is so that we can do our best to demo what you want and the gift exchange speaks for itself.

Here's to hoping you get all your Christmas turning done in time. Mostly I hope for all of you a wonderful holiday season filled with good food, good family and good health.

Thanks for allowing me to serve you and NMWT.

Tom



Thomas Durgin - President



NMWT's Upcoming Monthly Meeting



A u t h o r : T o m D u r g i n

The December club meeting is always one of the most fun of the year and probably the most important. The first part of our meeting will be planning out next year's demonstrations. Our club wants to demo what you want to see and learn. That's why we plan, we need to know what your most desired demos are so we can figure out how best to work them in. We need you there, have I already mentioned that?

Next comes the fun, the gift exchange. Everyone is included, everyone gets a ticket and we draw from the bucket, you come up to the table and pick a gift. Bring something for the exchange, a chunk of wood, something you've bought for the exchange, something you no longer use in your shop. Did you know, last year we even had a brand new pair of boots given away in the exchange?

Future Programs/Activities

Jan 6th	Don Roden	Easy Wood and Hunter Tools
Feb 3rd	TBD	TBD
Mar 2nd	TBD	TBD

NMWT Monthly Board Meeting

Open to all Members

When: Dec 27th, 2023 @ 7:30 pm

Contact info@nmwoodturners.org or
any board member for more info or
the Zoom link

*** Attention Members ***

Club dues increase starting 1 Nov 2023. Renew now to get the current price \$25, soon it will be \$30 a year. You can renew online, check out our web page. Questions? Ask us at info@nmwoodturners.org

Reflections from Last Month



D e s i g n S t r a t e g i e s

A u t h o r : L a r r y L i n f o r d

Design Strategies for Woodturning – November presentation by Michael Mocho

Long time club member and professional turner Michael Mocho talked about the fact that the focus of effort for most woodturners seems to be on tools and their application, with insufficient attention given to design, proportion, and form refinement. Technical skills are important in the turning process, but even the most spectacular piece of wood can be rendered bland if attention is not given to the nuances of the form intended bring something of interest to the eye while presenting the beauty of the material.

We need to put effort into training our eyes and developing our awareness for the elements of form. If technique is not in service to form, then the form tends to be governed by technique and may not result in a very interesting piece except by accident. The pursuit of form can sometimes require new technical solutions, and lead us into new areas of exploration.

Turners often re-create the forms of other turners, or frequently just put a piece of wood on the lathe with little or no specific idea of what form may gradually emerge through the subtractive process. While this can be great fun and result in interesting discoveries, developing the ability to strategically turn a specific form has huge benefits- similar to navigating your vehicle, rather than just “seeing where you end up”.

Michael suggested that shapes can be found almost anywhere, and to also look outside of the world of woodturning to study forms in nature, and the deep history of ceramic work. The collections at institutions like the Museum of Art in Wood in Philadelphia, the AAW Gallery, and other museums can be deep sources of inspiration, and remind us that contemporary woodturning exists within the context of deeper cultural motivations and traditions.

One simple approach to the exploration of turned forms employs a pencil, a mirror with a straight edge and a large blank piece of paper. By drawing any line, then holding the mirror perpendicular to the paper and intersecting the line, full profiles are easily created in the mirror reflection. The drawn line represents half of your potential vessel or spindle shape, and the mirror shows the complete symmetrical profile. You can view a myriad of possible shapes just by moving the mirror, then marking the position of the mirror edge in relation to the drawn line. A silhouette of the shape can be made by folding the paper on the mirror position line and cutting along the line you drew. A thin flexible metal necklace chain can also be used to generate any curved line, and can be continuously changed by adjusting the chain's position in relation to the mirror.

A good exercise is to make a paper pattern, and then go turn the form- helping awareness for forms separate from the character of the material. A common strategy for duplicating forms employs a template made of thin plywood or cardboard with a full-scale profile drawn on it. This pattern is held parallel to the lathe axis so that the position of specific diameters and their relative locations on the blank can be marked and cut using calipers and a sharp parting tool, thus creating points of reference that map out the form.

Reflections from Last Month



D e s i g n S t r a t e g i e s

A u t h o r : L a r r y L i n f o r d

Turning his attention to the 15 small forms turned by volunteer members, Michael asked which ones drew our attention and why. Much discussion followed, mostly centering on proportions, smoothness of curves, and transitions along the profile. He pointed out that when designing any form, you are essentially dealing with how light is perceived- concave shapes absorb light and therefore appear darker, while convex forms reflect light and tend to look lighter. Details -such as the foot or rim of a bowl form can have great visual impact on the presence of the piece.

Michael highly recommends "*The Art of Turned Bowls*", by Richard Raffan, by far the best book for exploring the elements of turned forms and sources of inspiration. It includes enormously useful information on developing awareness a wide range of turned profiles.

<https://www.richardraffan.com.au/books-and-dvds/#books>

Other books that may inspire new form explorations and the value of learning more about the fascination history of turned work include:

"*Wood Turning in North America Since 1930*", by Edward S. Cooke , Jr., and Glen Adamson

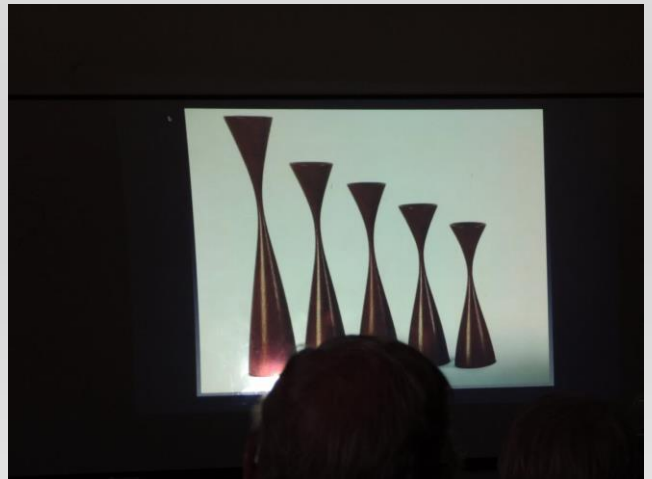
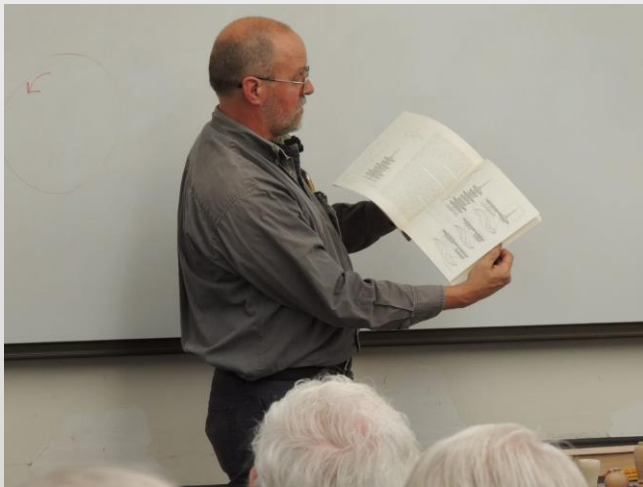
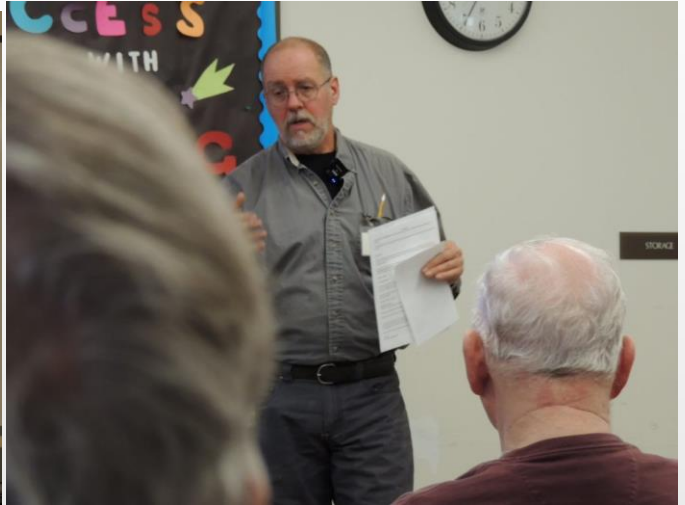
"*500 Wood Turned Bowls*", by Katherine Duncan Aimone

"*The Wood Turned Bowl*", by Robin Wood.

Reflections from Last Month



D e s i g n S t r a t e g i e s



January Demo**E a s y W o o d & H u n t e r T o o l s****A u t h o r : L a r r y L i n f o r d**

The January demonstration will focus on two of the highest quality brands of turning tools: Easy Wood and Hunter Tools. Highly experienced turner and club member Don Roden will be presenting a variety of tools from these two lines. Both of these brands use carbide cutters on the ends of straight and swan-neck tools, most commonly used for hollowing. You've certainly heard of these prized brands of precision tools. If you haven't invested in any yet, you're sure to find this demo very helpful and informative.



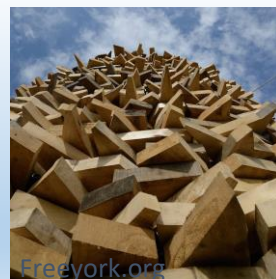
Silent Auction

C o n t a c t : N M W T T r e a s u r e r

We love to have nifty items or pieces of timber that can be auctioned at our next meeting to support the Scholarship Fund.

Potential ideas include rough turned bowls, gouges gathering dust, seasoned blanks or turning accessories.

Your contributions go to benefit the **Red Hollenbach Scholarship Fund** which is used to reduce the cost for members to attend professional demonstrator's hands-on sessions.



If you are seeking an handcrafted donation for your charitable organization, please email a request to: info@nmwoodturners.org

NMWT on Social Media



The New Mexico Woodturners are on Facebook and YouTube



Facebook is just one way to share your work. However, it's also a great platform to ask questions, request constructive criticism and rub shoulders with other turners.

Various members of the NMWTs moderate the social media accounts and promote the craft and our club actively on these outlets.

A number of the Facebook group members are not NMWT members and that's okay! However, by our NMWT membership being active on social media we can also share the benefits of club membership, promote club activities and foster relationships with turners around the globe.

Please join the Facebook group, subscribe to the YouTube channel and watch us grow turning!

Newsletter Submission

Got a great idea, tip, or trick that you'd like to share?

We'd like to read about it.

What do you need to do?

Write up a description, brief or in-depth, and include a few photos if possible to better detail your idea.

If you like or use a certain webpage or a YouTube channel, please write about and site your source.

Please send articles to news@nmwoodturners.org

Disclaimer: Articles submitted aren't guaranteed a spot in the next issue, but they will be published if educational criteria is met and as it fits organizational needs.



Newsletter

Submission

Deadline

D

e

c

26th

Green Wood

The Green Wood Committee is always on the hunt for greenwood, and we all can agree, woodturners hate to see any good pieces go to a landfill. If you have some greenwood to share, please contact either chair member below for coordination. Our members love greenwood and there are endless possibilities and projects that can be done with it.



Green Wood Chairs

Joe "Stretch" Cole

480-216-3580

jt.cole@hotmail.com

Help Needed

Beads of Courage – NMWT's 2023 Challenge

Our Challenge and Goal:

For each club member to take the time and heart to make at least one Beads of Courage Box during 2023

What is Beads of Courage?

Beads of Courage (BOC) is the NMWT's Community Service Project.

Beads of Courage, Inc. is a 501 (c) (3) tax exempt organization working in partnership with the American Association of Woodturners (AAW).

[Official Guide to Beads of Courage – Woodturners Wanted](#)

This is Local!

Our Beads of Courage Bowls are taken directly to UNMH Children's Cancer Facility here in Albuquerque for local patients. However, some bowls can also be sent to a National collection point in Tucson, Arizona.

UNMH Children's Cancer Facility has been treating nearly one hundred seriously ill cancer youngsters each year. For each medical treatment a child receives, he or she gets a bead which they can then keep in their bowl, hence Beads of Courage Bowls. The children do receive a bag to put their beads in, but a Beads of Courage Bowl is far more special and reflective of the hard work to beat cancer!

NMWT currently produces approximately 8 bowls a year and it would be great to see that number increase exponentially.

For more information regarding the program, where to purchase beads, or where to deliver your finely crafted bowl, please see:



BOC Website



BOC Chair / Contacts

Scott Eckstein (NMWT BOC Contact)

505-270-0516

seemee911@gmail.com

Brianna Hayes (UNM Certified Life Specialist)

505-991-8501

bnhayes@salud.unm.edu

Abby Walker (UNM Certified Life Specialist)

505-991-8501

abCWalker@salud.unm.edu

Women in Turning



B y : P a t r i c i a A p t

The local WIT (Women in Turning) chapter will not be meeting until January 2024. In the meantime, I would like to share a great article I found on how to mend a turning gone wrong. Titled "Mending a Turning" by Sally Radovich the article was published in the 2023 May issue of the AAW Women in Turning Newsletter, pages 7, 8 and 9.

To read more articles like this and to learn more about the national AAW WIT committee, take a look at their website at <https://www.woodturner.org/Woodturner/WIT>

Mending a Turning

by Sally Radovich

I'm a novice woodturner so I am reluctant to discard anything I've worked on because I work really slow. I put a lot of time into a piece before I even get close to applying a finish. So, when I turned a really nice natural edge, cross grain bowl out of ambrosia maple with the pith running through the center, I reveled in the process of rubbing in the oil finish. I guess I reveled a little too much because next thing I knew, the bowl flew from my hands and hit the tile floor—and CRACKED! All the way to the pith! On both sides!



What we offer is access to the AAW site and wonderful monthly magazine, and a group of engaged and enthused turners!

Join the private

[Facebook](#) group page [Women in Turning](#) to get ideas & support. AAW membership is not required.

Women in Turning (WiT) -- The

AAW strives to deliver the publications and services that our members need to grow, connect, explore, and thrive in the areas of woodturning that are important to them.

[Guest Membership](#)

ALSO – join the AAW with a guest membership so you can see what else WiT and AAW

By signing up for a complimentary Guest membership, you can have access to AAW resources for a full 60 days. You will be able to explore what the AAW has to offer, kick our tires, and hopefully decide to become a full-fledged, paid AAW member to benefit from everything the AAW has to offer.



L o c a l W i T C o n t a c t s

Patricia Apt (NMWT's WiT Liaison)	505-401-4442	papt625@gmail.com
Nancy Matteson	801-694-6866	namatteson@hotmail.com
Kay Grant	661-599-1832	wykayg@gmail.com
Erin Perry O'Donnell	505-926-1693	erin@dovetailworkshop.com

Women in Turning



B y : P a t r i c i a A p t

I held onto it for five long years, looking at it, and wondering what I could possibly do to salvage all the work that had gone into it. Fortunately I attended the 2021 AAW Symposium and sat in on the Wood Cracks presentation by Dennis Belcher. Armed with some techniques I learned in that session, I tackled the repair when I returned home.

First, I had to determine what to remove. Because the pith went through the bowl, there were cracks to the center that forked off from there. The center on each side needed to come out. To avoid splintering the wood, I started with small drill bits and worked my way up in size until the drill holes met.



After the centers were removed, I used a Dremel to smooth the edges.



I used a similar process to redefine the crack from the rim to the eye.

Women in Turning

B y : P a t r i c i a A p t



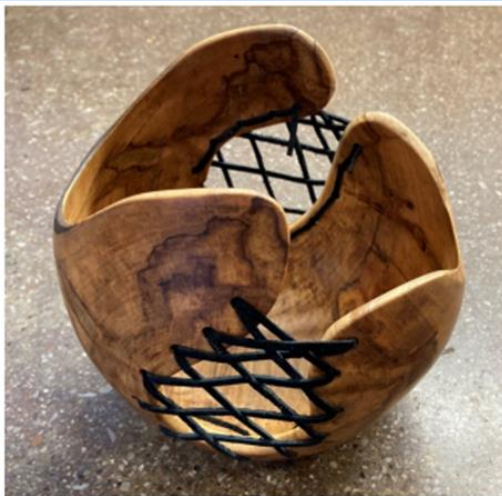
I finished smoothing the edges.



The next step was to determine the lacing pattern to use. After many trials, I chose the design shown and used the pattern to position the holes on both sides of the bowl.

I selected dark leather lacing for the final product. I used the same process for drilling the lacing holes as described above to avoid tear out on the inside, until I reached a size that allowed two pieces of the lacing to pass through the hole. As added protection for the wood, I also used painters tape on both sides of the wood.

It was important to make sure that the pattern looked pleasing from both inside and outside you can see it from both sides. For consistency on the back, I filled the space between the top two holes on each side. But that left the end of the lace on the front of the bowl. I added one more cross at the top so that the lace ended on the inside of the bowl.



Women in Turning



B y : P a t r i c i a A p t

Finally I needed to secure the ends of the laces. Options included adding beads or feathers to the ends, tying bows or knots at the ends or simply hiding them. Leaving the ends dangling with or without added embellishment didn't look right. The intricacy of the lacing didn't lend itself to adding bows or knots. So, I decided to simply hide the ends in the last pass through a hole. To do that, I colored four short pieces of toothpick black, applied wood glue, and inserted them into the final holes to hold the laces in place.



The final result! Now that it is finished, the bowl will be a gift to my niece as a thank you for three weeks of dog-sitting while we were travelling in New Zealand this year.

Women in Turning

Try out an American Association of Woodturners (AAW) membership for 3 months!!

We know you will be hooked!

AAW Membership Application

WIT (Women in Turning) is “dedicated to encouraging and assisting women in their pursuit of turning, sharing ideas and processes to further member’s skills and creativity, and increasing participation of women in the field of woodturning.”

The AAW WIT Committee agrees that to further this mission, we can work with chapters to help grow the number of women in AAW. Currently, women comprise less the 9% of AAW membership.

To encourage women to join AAW, the WIT Committee offers a limited number of WIT sponsored half price AAW memberships to women for a one-year, full "General" AAW membership.

Eligibility To be eligible, a grant recipient must be a woman and who has never previously been a member of AAW.

Process Only the chapter AAW WIT Liaison, Patricia Apt, chapter president or vice-president may request the grant. After we’ve received the application, the recipient will be sent a promotional code with instructions on how to use the code in applying for an AAW membership. If you have questions, please email wit@woodturner.org.

Limitations

If the nominee is a new member of a local chapter (within the last two months), WIT will pay 100% of the AAW membership.

If the nominee has been a member of a local chapter for more than two months, WIT will pay 50% of the AAW membership.

If the nominee is not a member of a local chapter, WIT will pay 50% of the AAW membership.

Grants are currently limited to no more than two women, per chapter, per quarter.

Quarters end January 31, April 30, July 31, and October 31. Based on the number of requests, this limitation may change.

We hope that this offer will be an incentive for new women woodturners to join your chapter.

[Click Here for AAW Specials for WIT](#)



2023 Turning for Troops

**Turn in Your Pens!****A u t h o r : L a r r y L i n f o r d**

We got a late start on our pen turning project this year, but I'd like to submit the pens to WoodCraft before the year's end. So it's time to turn in your pens, folks!

At last count, we have about 80 pens still in the hands of our members. Please check your workbenches and see if you are one of the eight folks who have not returned your completed pens, and plan to do so before within the next couple weeks. This will give me time to print the labels, slip them into the baggies and prepare them for shipping to WoodCraft before December 1st.

Remember, we get a new pen kit in return for every completed pen we submit to WoodCraft. We submitted 239 last year, up from 200 the year before, and we should be able to beat last year's number for 2023! (Smaller clubs than ours are putting us to shame with their numbers year after year.)

So please bring your completed batches of 10 pens to the November meeting or plan to bring them by my home (969 Antelope Ave NE, Albuquerque) within a week or two of the meeting. The sooner the better. If you have any questions, call me at 505-870-1601.

And thanks to all who have participated in this project!





Apparel and More

A u t h o r : C i n d y E d g e c o m b

New club t-shirts will be available for purchase during our club meeting on November 4. We have two styles of logos and various colors from which to choose - sizes range from medium to extra-large. They are \$20 and \$25 depending on the logo design. I will have them set up on the table at the back of our meeting room. **If you bought one of the tan shirts with the logo on the left chest, please come talk to me.

An arrangement has been made with Black Duck Screenprinting and Embroidery in Albuquerque to have the NMWT logo affixed to garments of your choosing. The logo we have on file with them is in the form of a heat transferred vinyl which is lightweight and durable. If you want a logo applied to your turning smock, they are willing to do that for us. Normally you cannot bring in your own garments to have the logo applied, but they have agreed to make an exception for turning smocks. Please check with me for details.

Coffee mugs: the club has purchased 20 coffee mugs with our logo. Most of them have been sold or picked up through the raffle. I still have one available but can order additional mugs. In order to keep the price to \$15 each I have to order them in lots of ten, so let me know if you are interested in ordering a mug....we'll go from there.

One final thing: I have been told that there is a "pile" of plates to put on your cars that should be available for members to purchase, but their location is unknown. Can anyone solve this mystery?

Cindy
505.615.7307



Beginner's Turn



End of Year and Suggestions for the Next

A u t h o r : S t e v e J o h n s o n

The End of the Year and Suggestions for the Next

This last year has been an interesting one. In some ways I have made progress in Woodturning, and in some ways I have not improved or reached some goals that I subconsciously set for myself around this time last year.

Positives - I have another year, two and half years total in this business, of experiences both on and off the lathe. From attempting segmenting and building two good segmented bowls, to pretty much acquiring most of the tools I think I need for the foreseeable future. I have now enough experience with enough tools to see past worrying about catches killing me to the more esoteric design considerations within my projects. I have more finishing materials than I will ever use. I can now use a hone to sharpen my flat tools with great success (*see below for what I cannot sharpen*). The State Fair was a resounding success for me with all the positive feedback from the kids that I got.

Negatives - I still can't sharpen a bowl gouge worth a s__t. It totally escapes me how to do this consistently. I can sharpen skewers, scrapers, cut off tools, basically anything that can be sharpened on a platform. But the bowl gouge, tool of choice for this club, is still beyond me. Finishing is still a major subject which I tussle with. The complexity that exists with each project, the wood used, project requirements, etc. I spend more time finishing than anything else. I still fight catches, they happen at unexpected times and I struggle with my emotional response to them. That's about it.

On the whole, there are more positives than negatives. I will keep plugging away next year.

Suggestions for Demos next year

August - Devote an entire demo on the State Fair. What the goals of the club are, how it works, where to go when, what's in it for the members. Especially the live turning slots.

September - Devote an early demo to Holiday Ornaments - Not just the complex ones but something for everyone, especially beginners. Maybe even include a Halloween and Thanksgiving themed ornament.

General topics for Demos -

Finishing - Turn this subject into a series, one per year, that demonstrates finishes that haven't been covered before. Also techniques for specific situations.

Mounting Tools - For the beginner, this subject is of the utmost importance. When to use what, how to mount woods of various types for specific reasons. Maybe a section devoted to just chucks and jaws.

(Continued on the next page)

"Have fun with your lathe"

Beginner's Turn**End of Year and Suggestions for the Next****A u t h o r : S t e v e J o h n s o n**

Project Design - This is a never ending subject. Maybe go over specific tools or methods to achieve a pleasing result. Rule of Thirds or the use of Fibonacci curves.

Sharpening - enough said.

Ok, that is six out of the twelve demos that happen every year. I am sure that the rest will get filled in somehow. If not so be it.

Next year I would like to do the following:

Complete a major, complex segmented project that will cement my skills and project management capabilities so that I can build practically anything I can imagine.

Learn how to sharpen a **Bowl Gouge!**

Learn how to turn a second item for the State Fair. Tops are still my favorite but I need to branch out a little.

Continue to learn about Woodturning.

To All, Have a great Holiday Season, and see you next year!!



Meme

P r o v i d e d b y : B i l l Z e r b y



Photo Gallery



Instant



Woody Stone Elm, Mulberry



Woody Stone Bowl Desert Willow with Malachite Inlay



Woody Stone Lidded Vase,
Mystery Wood, Walnut
stopper

Please send gallery photos by the 3rd Saturday of the month to
gallery@nmwoodturners.org

Photo Gallery



Instant



Kay Grant Bowl Silver Maple, Dyes



Kay Grant Sycamore Bowl, Underside

Please send gallery photos by the 3rd Saturday of the month to
gallery@nmwoodturners.org

Photo Gallery



Instant



Nancy Matteson Plate, Green Spalted Ash



Larry Evans Sycamore Bowl



Larry Evans Lidded Apple Vessel

Please send gallery photos by the 3rd Saturday of the month to
gallery@nmwoodturners.org

Photo Gallery



Instant



David Croxton Salt & Pepper Grinders, Maple Basket Illusion



David Croxton BOC Box, Various Woods, Acrylic Paint



David Croxton and Wife Snow People, Maple

Please send gallery photos by the 3rd Saturday of the month to
gallery@nmwoodturners.org

Photo Gallery



Instant



Nancy Matteson Candle Stick
Green Elm, Eucalyptus Candle



Ray Davis Bowl, Hackberry or
Osage Orange



Ray Davis Bowl, Cosmic Cloud

Please send gallery photos by the 3rd Saturday of the month to
gallery@nmwoodturners.org

Photo Gallery



Instant



Eddie Bell Practice Texture Piece, Maple with Finial

Please send gallery photos by the 3rd Saturday of the month to
gallery@nmwoodturners.org

Photo Gallery



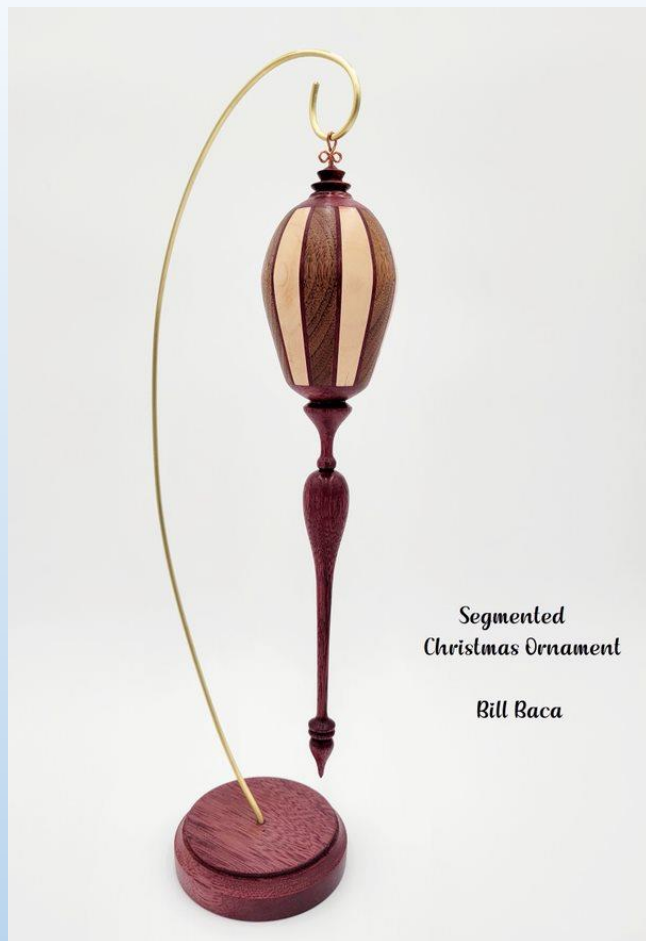
Instant



John Cook Kaleidoscopes,
Various Woods



Alan Becker



Segmented
Christmas Ornament

Bill Baca

Thank you for
the submissions!

Please send gallery photos by the 3rd Saturday of the month to
gallery@nmwoodturners.org

Marketplace

For Sale - MacBook Air. 13.1" screen, gold color case. 8Gb memory, 256Gb storage. Charger/cord included. Purchased January 2022 - used less than 12 hours. Apple Store has "wiped" hard drive and installed updated operating system. No technical issues at all - simply that operator is not compatible! \$550. Sally Breeden at 505-352-0159. Text or call reply.



I have 5 segmenting sleds that I don't need anymore and would like to get rid of. They are for 8, 10, 12, 16 and 18 segments. They may need some modifications depending on grooves on the table saw spacing. If interested contact Bob (Rocky) Rocheleau at (505) 235-9002.



Rough-Turned Bowls for Sale

David Hallman has hundreds of rough-turned bowls, in various woods, including cherry, china berry, walnut, sycamore, mimosa, sassafras, and mesquite. Some are natural edge (with and without bark), others are cut edge. Sizes range from four inches up to fifteen inches wide, shallow up to six inches tall. Asking one dollar up to twenty five dollars for the larger sizes. Volume discounts. Located in Silver City.

Contact David at (575)654-0299
or mesquitedave@gmail.com



Bridge for Sale



This is a sample marketplace posting.

We welcome members to use this space for anything related to woodturning. There is no charge for listing an item. Ads will run for about one month.

To request a listing, send item and contact info to sale@nmwoodturners.org. Your ad will be reviewed and posted as quickly as possible.

*** You must be an NMWT member to post ads ***

See our Marketplace section on our website for better photos

2022 Elected Officers, Directors & Committee Chairs

President



Tom Durgin
505-688-1369

Vice President



Larry Linford
505-870-1601

Treasurer



Woody Stone
828-808-7876

Secretary



Sally Breedon
505-352-0159

State Fair



Bill Mantelli
505-400-0266

Membership



Tom McLarty
505-298-3790

Webmaster



Dennis Cahill
505-620-2508

Lead Video



Derek Roff
505-438-1820

Email Administrator



Hy Tran
505-459-8132

Member-at-Large



Ron Bahm
505-881-8845

Equipment & Workshops Beads of Courage Chair



Scott Eckstein
505-270-0516

Logistics



Bob "Rocky" Rocheleau
505-235-9002

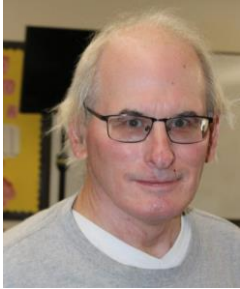
SEEKING

Green wood help

Please speak to a board member regarding any of these positions

2022 Elected Officers, Directors & Committee Chairs

Raffle Coordinator



Dean Cross
575-644-8945

Special Workshops



John Ellis
505-463-7750

Green Wood Manager(s)



Green Wood Manager(s)



Joe "Stretch" Cole
480-216-3580

Past President



Rick Judd
612-280-8300

Newsletter Designer



Traci Durgin
news@nmwoodturners.org
505-688-1370

Apparel Manager



Cindy Edgecomb
505-615-7307

Photographer

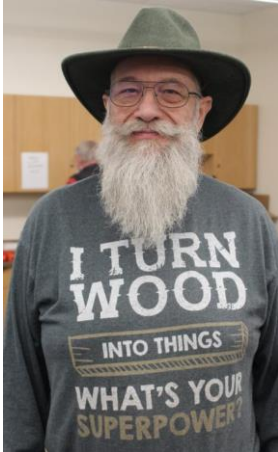


Nancy Matteson
gallery@nmwoodturners.org
801-694-6866

Mentors

Bill Zerby

505-263-6632
Rio Rancho – NM
528 & Southern



Basic spindle turning
& tool sharpening

Scott Kershaw

406-274-2931
Rio Rancho –
Unser & Westside



Basic woodturning skills to
include bowls, plates, platters,
spindle projects; Green wood
processing, coring and twice
turning; Tool sharpening and
lathe maintenance

Hy Tran

505-459-8132
Albuquerque –
Paseo & Ventura



Beginner and Novice
woodturning

John Ellis

505-463-7750
Placitas



Basic turning, plates,
tools & handles

Larry Linford

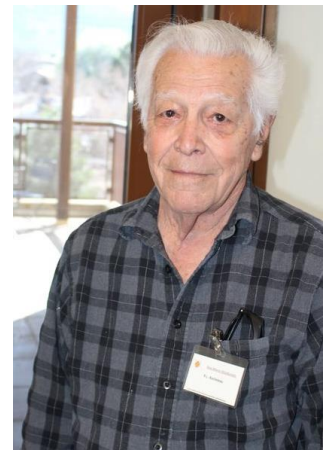
505-870-1601
Albuquerque



Basket illusion turning
and embellishment

Bob “Rocky” Rocheleau

505-235-9002
Albuquerque – NE Heights



Segmenting and bowl
turning

Free to NMWT members: give a Mentor a call!

*****WE ARE ALWAYS SEEKING NEW MENTORS*****

Mentors

Rick Judd

612-280-8300
East Mountain



Hollow forms, bowls,
lidded boxes, burls,
natural edge

Ron Bahm

505-881-8845
Albuquerque – NE
Heights



Pen turning, beginning
segment construction,
beginner woodturning

Ray Davis

505-221-4622
Rio Rancho, NM – NW side
raylindavis@r-davis.com



Open and closed Segment
bowls. Stave Bowls, Bowl
turning. Pens.

I have a heated and a/c shop
with 2 lathes ready to go.

Don Roden

763-234-5780
Dovetail Workshop



Skew, carbide tools,
bowls and advanced
turning techniques, like
epoxy turning, finials, and
offset turning

YOUR NAME

Your phone #
Your location



What can you offer?
Help us fill this space

YOUR NAME

Your phone #
Your location



What can you offer?
Help us fill this space

Free to NMWT members: give a Mentor a call!

*****WE ARE ALWAYS SEEKING NEW MENTORS*****

Quick Reference List

(Printer Friendly Version)

2022 NMWT Elected Officers, Directors & Committee Chairs


news@nmwoodturners.org

President	Tom Durgin	505-688-1369	Newsletter Editor	Help Needed	
Vice President	Larry Linford	505-870-1601	Newsletter Designer	Traci Durgin	
Treasurer	Woody Stone	828-808-7876	Photographer(s)	Nancy Matteson	801-694-6866
Secretary	Sally Breeden	505-352-0159	Raffle Coordinator	Dean Cross	575-644-8945
State Fair	Bill Mantelli	505-400-0266			
Membership	Tom McLarty	505-298-3790	Equip/Workshops	Scott Eckstein	505-270-0516
Webmaster	Dave Stein	505-266-0356	Green Wood	Help Needed	
Lead Video	Derek Roff	505-438-1820	Green Wood	Joe "Stretch" Cole	480-216-3580
Email Administrator:	Hy Tran	505-459-8132	Logistics	Bob Rocheleau	505-235-9002
Member-at-Large	Ron Bahm	505-881-8845	Special Workshops	John Ellis	505-463-7750
Past President	Rick Judd	612-280-8300	Apparel Manager	Cindy Edgecomb	505-615-7307

Quick Reference List for Mentors

Free to NMWT members: give a Mentor a call!

Bill Zerby Rio Rancho – NM 528 & Southern	➡	505-263-6632	➡	Basic spindle turning & tool sharpening
Hy Tran Albuquerque – Paseo & Ventura	➡	505-459-8132	➡	Beginner and novice woodturning
Don Roden Dovetail Workshop	➡	763-234-5780	➡	Skew, carbide tools, bowls and advanced turning techniques, like epoxy turning, finials, and offset turning
Larry Linford Albuquerque	➡	505-870-1601	➡	Basket illusion turning and embellishment
Rick Judd East Mountain	➡	615-280-8300	➡	Hollow forms, bowls, lidded boxes, burls, natural edge
Ron Bahm Albuquerque – NE Heights	➡	505-881-8845	➡	Pen turning, beginning segment construction, beginner woodturning
Bob "Rocky" Rocheleau Albuquerque – NE Heights	➡	505-235-9002	➡	Segmenting and bowl turning
Ray Davis Rio Rancho – NW side.	➡	505-221-4622	➡	Open and closed Segment bowls. Stave Bowls, Bowl turning. Pens.
Scott Kershaw Rio Rancho – Unser & Westside	➡	406-274-2931	➡	Basic woodturning skills to include bowls, plates, platters, spindle projects; Green wood processing, coring and twice turning; Tool sharpening and lathe maintenance.

Members are always welcome to contact the people on the mentor list for guidance to better turning ideas and techniques

WE ARE ALWAYS SEEKING NEW MENTORS

Membership Renewal

Membership Dues

Membership dues renewals are due on or before the last day of the month in which the member's current membership term expires. Members who do not renew within thirty (30) days after their membership expiration date will no longer have access to member privileges and will no longer receive the monthly newsletter. Annual dues are as follows:



One year: \$30 for an individual; \$35 for a family
 Two Years: \$55 for an individual; \$65 for a family
 Three Years: \$75 for an individual; \$90 for a family
 Lifetime: \$300 for an individual; \$350 for a family

Additional Fees

1. An individual member who subsequently adds family members will pay the difference between the individual dues and the family dues rate for the remainder of that membership year (i.e., a one-year individual member adding family members would pay an additional \$5.00 dues for the remainder of the membership year).
2. A member requiring a mailed copy of the monthly newsletter will pay an additional \$10 per year to cover cost of mailing.

Renew Online

We are very pleased to announce that you can now pay your membership dues with a credit card on the NMWT website at:

<https://www.nmwoodturners.org/>.

To access online dues payment, simply go to the new "Membership" tab near the top of the homepage and select "Pay Online" from the drop-down menu. This will take you to a secure website managed by Converge, our credit card service provider. There you will find a series of "Buy Buttons" that are clearly labeled with each membership dues option. Simply select the dues option that you want and then hit the "Checkout" button.

You will need to fill in all of the contact information on the payment processing page so that the Treasurer can confirm that our membership records are up to date and also so that he can send your new membership card by regular mail. Also, due to some reporting limitations of the Converge website, you will need to once again select the dues option you want from the drop-down menu labeled "Items Purchased". Fill in your credit card information and hit the "Submit Payment" button to complete the transaction. You should receive an "Order Confirmation" with full details of your purchase by e-mail, and the Treasurer will mail your membership card to you. That's all there is to it!

[Web-Based Credit Card Dues Payment Now Available](#)

Renew by Mail

You can, of course, still mail a check along with current contact and e-mail information to our **Treasurer, Woody Stone, at 2 Blue Corn Ct. Sandia Park, NM 87047.**

The easy way to do that is to go to that same new "Membership" tab on the NMWT homepage and select "Membership Form" from the drop-down menu.

Fill in the form (**PLEASE PRINT CLEARLY**) and mail it to Woody with your check. Should you have any issues or questions regarding the new Credit Card payment system or if you are not sure if your membership expires at the end of 2020, feel free to call Woody at 828-808-7876 or e-mail him at eesphoto492@gmail.com.



Scan our QR code to access our webpage



How to Contribute to High Desert Turning

The NMWT's newsletter editor has submitted High Desert Turning to the AAW's 2020 and 2021 Best Chapter Newsletter Contest. Unfortunately for the NMWT, High Desert Turning has not been selected in the top 3 chapters either year. However, the NMWT chapter website won 1st prize in 2020 for the Best Chapter Website Contest. So, we know it's possible to rank highly among the numerous chapters of the AAW. Much of the website content can be found in High Desert Turning.

So, now you ask, "What is in it for me?" Well, we will get to that. But first, our ask is this:

Submit a short snippet, article or outline of a shop tip or trick you use. You'll be surprised by how many folks will benefit from your personal idea or solution. Take 2, 3, 4 or 5 photos of your process, pieces or how your tip or trick comes together to illustrate how the membership can implement your idea in their shop. If appropriate, share credit where credit is due should you have benefited from a social media post, YouTube video or viewing an in-person demonstration.

Please consider contributing to the NMWT newsletter High Desert Turning! No tip too elementary and no trick too simple will go unpublished. We count on you to make our newsletter awesome. Please send your contribution to news@nmwoodturners.org

Here's what's in it for you:

You are inspiring dozens upon dozens of other turners implement shop solutions that ease their way and improve their flow and turning. You have ideas and solutions that many folks likely envy and would benefit from knowing. There's gratification in uplifting fellow turners.

The club has a large tote of exotic, seasoned and figured timber that was acquired during lockdown and you will be free to select a piece of your choice for every published tip or trick. The tote has wonderful turning stock and you can rifle through it for your choice.

NMWT's Logo Apparel

Caps (Baseball)	\$15
Long Sleeve Denim Shirt	\$30
Short Sleeve Denim Shirt	\$30
Short Sleeve Snap Shirt	\$30
Polo (golf) Shirt w/Pockets	\$30
T-Shirt V-Neck	\$20
Smocks	\$50

Items include embroidered NMWT logo

Names embroidered on shirts are additional \$5.00

Sizes XXL, 3XL, 4XL and up are an additional \$3.00

Contact: info@nmwoodturners.org

Get order forms at the club meetings or use the links below to access the order forms. Once completed, turn your form in to a board member with payment. *Orders are submitted on a quarterly basis.*

Full payment for an order will need to be submitted with each order form before it can be processed! Order placement cut off dates for each quarter will be as follows:



Order Info

NMWT Shirt/Cap Form

NMWT Smock Order Form

Quarter	Months	Order Meeting	Delivery Meeting
1st	Jan-Mar	Feb	Mar
2nd	Apr-Jun	May	Jun
3rd	Jul-Sept	Aug	Sept
4th	Oct-Dec	Nov	Dec

Discount & Rebate Partners

DAKOTA

Dakota Hardwoods -

Albuquerque, NM

3700 Singer Blvd. NE, Suite A, Albuquerque,
NM 87109

Office: 505-644-WOOD (9663)

Monday-Friday: 8:00am - 5:00pm

Saturday-Sunday: Closed

Say you are with the NMWT for a discount.



NMWT members receive Wholesale Prices. Rugby's has hardwoods, Thermofused Melamine, plywood, veneers, and furniture grade pine.

Penn State Industries

your wood turning & dust collection source | 1-800-377-7297

www.pennstateind.com

Register as a member of New Mexico Woodturner at Penn State Industries and automatically get 10% off (in addition to most other promos) your entire order !!! Yes! In effect, you will be doubling dipping on the discounts!!!

Register by sending an email to hy.d.tran@gmail.com with the name, address and email to which your Penn State catalogs are sent. Once you're registered, you'll automatically get 10% off every time you shop online (not applicable to phone or mail orders).



DENDROTECHNOLOGY
TIN SHED MILLWORKS

(505) 980-6161 www.dendrotsm.com

LIVE EDGE SLABS, TURNING BLANKS, CUSTOM MILLING

We offer 10% off our listed prices to members and give a free item from our oddments box or a turning blank to first time member customers.



**8100-M4 Wyoming Blvd. NE, #188
Albuquerque, NM 87113**
