



High Desert Turning

You're gonna love the way you turn.

You can do this. We guarantee it!

Membership details found within www.nmwoodturners.org



NMWT's Upcoming Monthly Meeting

Club Meetings are generally held 10:00 am to 12:30 pm on the first Saturday of the month



Who: Albuquerque Exotic Woods

Topic: Turning with Resin

When: August 3rd @ 10:00 am MT

(In-person and online demo – Zoom session opens at 9:30 am)

Where: North Domingo Baca Multigenerational Center
7521 Carmel NE Albuquerque, NM 87113

Please see next page for more information regarding guest speaker(s)

President's Turn

A u t h o r : T o m D u r g i n

New Mexico Woodturners,

The time is upon us, yes State Fair time. This is the single biggest effort of NMWT each year, to pull off the fair it will take about 460 volunteer hours. That's set up, tear down, fair demonstrations, photographing all the entries, judging plus odds and ends. We have one awesome Fair Committee chair, Bill does such a great job with this, but he can't do it all alone. YOU are critical for this event, your time, your passion to inform the public and of course your awesome turnings for display.

Have you ever entered a piece? If you have, you know. When you enter a turning, your piece is judged against other pieces made by people in your skill level. If you are a beginner, it is just you and the other beginners. What am I trying to say, we want you to win a ribbon, we want your piece displayed, we want all the fair visitors to see how awesome woodturners of all skill levels are! A big bonus is the full written evaluation on your piece from each of the judges, just in case you want to improve your work.

The biggest thrill of them all for me is turning for the fair visitors, especially the kids. I really don't have words to explain how awesome it is to turn something as simple as a top as a child watches. Let them pick the colors, tell them they are the top tester and to see their face as they walk away with their new top. Oh my goodness, it is so good planting a turning seed in those kids!

Be a part of the fair this year, you won't be sorry.



Thomas Durgin -
President

NMWT's Upcoming Monthly Meeting

A u t h o r : L a r r y L i n f o r d

August Demonstration

For August, we will have member Johnathan McDonnell, co-owner of Albuquerque Exotic Woods with his wife Ashley, showing us the fine art of using resin or epoxy in woodturning. This practice can be functional, as in filling voids and cracks in a piece, or purely decorative. The epoxies and resins come in a limitless range of colors, which can be paired with specific woods for best presentation.

Johnathan will show us how to mix and color the resins and how to use molds. He will also show the best way to pour the resins to avoid bubbles, and how to eliminate the bubbles if some occur.

Larry Linford will distribute packs of 10 pen kits, complete with pen blanks, for the 2024 Turning for Troops Project at the August meeting. Members are asked to try to return the finished pens within 30 days of picking up the kits.

Future Programs/Activities

Sept 7th	Michael Mocho	Skew and Texturing
Oct 5th	Bill Zerby	Sharpening
Nov 2nd	NMWT Members	Shop Made Jigs & Fixtures OR Inlay

NMWT Monthly Board Meeting**Open to all Members****When: Aug 28th, 2024 @ 7:30 pm**

Contact info@nmwoodturners.org or
any board member for more info or
the Zoom link

Reflections from Last Month



July 6, 2024 Club Demonstration – Bill Mantelli and Hy Tran

A u t h o r : L a r r y L i n f o r d

The purpose of today's demo was to show members how they can turn quick, simple projects while demonstrating before the public at the New Mexico State Fair. These projects can educate the public about wood turning, and the quickly finished projects can be given to spectators – especially children in the audience. (These projects also make great easy gifts for family and friends.)

Child's top – Bill Mantelli

Bill first demonstrated a child's spinning top. He started with a blank that was roughly 2" x 2" x 6". He mounted one end of the rectangular blank into a scroll chuck, brought up the tail stock with a hollow tipped live center. With a spindle roughing gouge, he began rounding the shaft into a cylinder near the distal end. With a spindle gouge, he turned the distal end of the blank to a broad point about 3/4" long, removing the live center as the blank became more pointed and required less pressure from the gouge for shaping. He then used sandpaper to smooth both the head and handle, 220 grit works fine. He added color to the top by applying magic markers or Sharpies to the wood as the top spun. Finally, he cut off the top with a narrow parting tool, and sanded the nub off the end of the handle.

Small weed or bud vase – Bill Mantelli

Bill proceeded to make a small natural edge bud vase. He started with a piece of a branch, roughly 2" to 3" in diameter, and 5" long, with bark from end to end. Both ends were sawn flat and relatively parallel. The bark needs to be firmly attached. Bill used apple wood. A blank almost cylindrical with an off-center heart works best. Bill used maple. Since we didn't have a drill press for our demos, Bill prepared the blank at home, drilling a center hole about 1/4" in diameter, about two thirds the length of the blank. Bill mounted the blank between centers, being careful not to use too much pressure and split the drilled end. He proceeded to turn the end with the drilled hole using a spindle roughing gouge, forming a funnel-shaped point that begins at or just below the vertical center of the blank, and ends at the drilled end. The walls around the drilled hole should be about 1/4" thick.

Honey dipper – Hy Tran

Hy Tran started by turning a wooden honey dipper. He started with a blank about 1" x 1" x 6" to 8" mounted between centers. His first step was to turn the blank into a cylinder with a spindle gouge. He defined the business end and the handle, working back and forth. The business end is usually about 1.5" to 2" long, and about 3/4" in diameter. Hy drew lines around the business end with a pencil to define the splines that will hold the honey when dipped into it. then each half in into thirds, for a total of 6 splines. The grooves defining the splines are cut with a narrow parting tool, and must be just a little wider than the parting tool to prevent binding. The spines should be about 3/32" to 1/8" thick, about the same thickness as the grooves between them or they can break during turning. The grooves should all be to the same depth so the shaft in the business end is about 1/4" thick. Hy gently shaped the

(Continued on the next page)

Reflections from Last Month



July 6, 2024 Club Demonstration –Bill Mantelli and Hy Tran

A u t h o r : L a r r y L i n f o r d

business end while on the lathe using a spindle roughing gouge or a skew, tapering it at both ends. The resulting business end was rather football shaped, but not at pointy at the ends. At the top end, the taper blended into the handle. For decoration, Hy formed a bead and cove into this taper.

The handle was shaped into a concave shaft about 1/4" thick in the center, but thicker at the ends. As stated before, the distal end blended into the business end, while the proximal end was formed into a bulb a little smaller in diameter. Hy noted that he usually sands lightly, even into the grooves between the splines.

Before parting off the dipper, Hy thinned the business end with a long-winged spindle gouge. He then parted off the dipper and sanded the nub off the then proximal end.

Bowl from a 2" x 4' – Hy Tran

Hy started with a section of pine 2x4 scrap about 4" long. He mounted it against the jaws of his chuck, held tightly in place by a live edge in the tail stock. He started turning about 1100 rpm, and used a scraping cut on the tail stock side, shaping the outside curve with a bowl gouge. Round it off from end to end, leaving a shallow tenon to fit the jaws of the chuck. Reverse mount and hollow the inside. Determine the wall thickness you want, and try to maintain that thickness throughout. It's a good idea to drill a small hole in this face first off to the depth you want to cut to prevent cutting through to the other side. Match the inside curvature with that of the outside. The bowl will be rectangular, even if you turn to the outside margins.



(Continued on the next page)

Reflections from Last Month



July 6, 2024 Club Demonstration –Bill Mantelli and Hy Tran

A u t h o r : L a r r y L i n f o r d



Event



N M S t a t e F a i r 2 0 2 4

A u t h o r : B i l l M a n t e l l i

As in previous years, our display and demonstrations will be in the Creative Arts Building

Entries will be accepted on Friday August 23 and Saturday August 24 9:00 am to 5:00 pm both days. To see the Premium Book (State Fair and NMWT rules) online, go to Expo NM, click on State Fair, under Participate click on Competitions, click on Creative Arts, scroll down to 2024 Premium Books, scroll down to woodturners and click one more time and you are there.

Starting in 2021 the NM State Fair Commission charges a \$5 per person entry fee for all Creative Arts entrants. Our Board of Directors has again determined that we will reimburse the \$5 entry fee to all NMWT members entering in the woodturning section.

The State Fair is a fantastic opportunity to show the public some of the useful and beautiful things we create from a chunk of wood. It also provides an opportunity for us to promote the New Mexico WoodTurners.

Entering a turning, or any number of turnings, gets you a written critique of every entry by some of the best turners in New Mexico, and you may even win a ribbon or two.

If you are a member of the American Association of Woodturners or become a member, (you can join instantly online) you can demonstrate at the fair. Our insurance for demonstrators is through the AAW.

The State Fair provides the venue and the ribbons and the NMWT's provide about 460 man/hours to make it all work. WE NEED YOUR HELP

The fair provides free parking, and free admission, and if you request it, transportation for you and your tools to and from the parking lot. Albuquerque Exotic Woods will Provide turning blanks suitable for turning tops, goblets, small end grain bowls, small boxes, bottle stoppers, etc. Or you can bring your own wood and turn whatever you like. When you are in the neighborhood stop by AEW and thank Johnathan for his generosity.

The State Fair is a great opportunity to promote our organization, but we need volunteers to do it.

Look over the sign-up sheets and then call me at (505) 400-0266 ASAP to ensure you get the time slots you want. The sign-up sheets will also be available at the July 6 and August 3 meetings. Entrance tickets, parking passes, Demonstrator and Video Monitor Information will be available at the September 7 meeting, however, since the Fair starts before our September meeting, I will contact volunteers who have 'volunteer dates' before our meeting, about tickets, parking passes and info.

Thanks for volunteering,

Bill Mantelli, State Fair Coordinator

Event



N M S t a t e F a i r 2 0 2 4

A u t h o r : B i l l M a n t e l l i

New Mexico State Fair 2024 NEW MEXICO WOODTURNERS Demonstrator Sign-Up



DAY	DATE	TURNING DEMONSTRATOR						VIDEO MONITOR		
		Lathe #1			Lathe #2					
		9:30am-1:30pm	1:00-4:30pm	4:00-8:00pm	9:30am-1:30pm	1:00-4:30pm	4:00-8:00pm	9:30am-1:30pm	1:00-4:30pm	4:00-8:00pm
Thursday	Sept. 5									
Friday	Sept. 6									
Saturday	Sept. 7	X			X			X		
Sunday	Sept. 8									
Monday	Sept. 9									
Tuesday	Sept. 10									
Wednesday	Sept. 11									
Thursday	Sept. 12									
Friday	Sept. 13									
Saturday	Sept. 14									
Sunday	Sept. 15									

Contact Bill Mantelli for open
volunteer slots 505-400-0266

NOTE: Due to insurance requirements, turning demonstrators must be a member of AAW.

Bill Mantelli (505) 400-0266

Event



N M S t a t e F a i r 2 0 2 4

A u t h o r : B i l l M a n t e l l i

NEW MEXICO WOODTURNERS 2024

State Fair Volunteers

Woodturning Check-In 9:00 am – 5:00 pm

Day	Date	Name	<u>Name</u>
Fri.	Aug. 23		
Fri.	Aug. 23		
Sat.	Aug. 24		
Sat.	Aug. 24		

Photographer, Aide, & Display Set-up

Day	Date	Name
Wed.	Aug. 28	
Wed.	Aug. 28	
Wed.	Aug. 28	
Wed.	Aug. 28	

Judges & Aides 9:00 am – 5:00 pm

Day	Date	Judge	Aide	Youth	Novice	Inter	Advanced	Professional
Mon.-Tue.	Aug. 26, 27							
Mon.-Tue.	Aug. 26, 27							
Mon.-Tue.	Aug. 26, 27							
Mon.-Tue.	Aug. 26, 27							

Contact Bill Mantelli for open
volunteer slots 505-400-0266

Equipment Crew

Day	Date	Lathe/Equip. Set-Up/Dismantle
Wed.	Aug. 28	
Wed.	Aug. 28	
Wed.	Aug. 28	
Wed.	Aug. 28	
Tue.	Sept. 17	Return Equip. to Storage

Pick-Up Entries 9:00 am - 5:00 pm

Day	Date	Name
Tue.	Sept. 17	
Tue.	Sept. 17	
Tue.	Sept. 17	

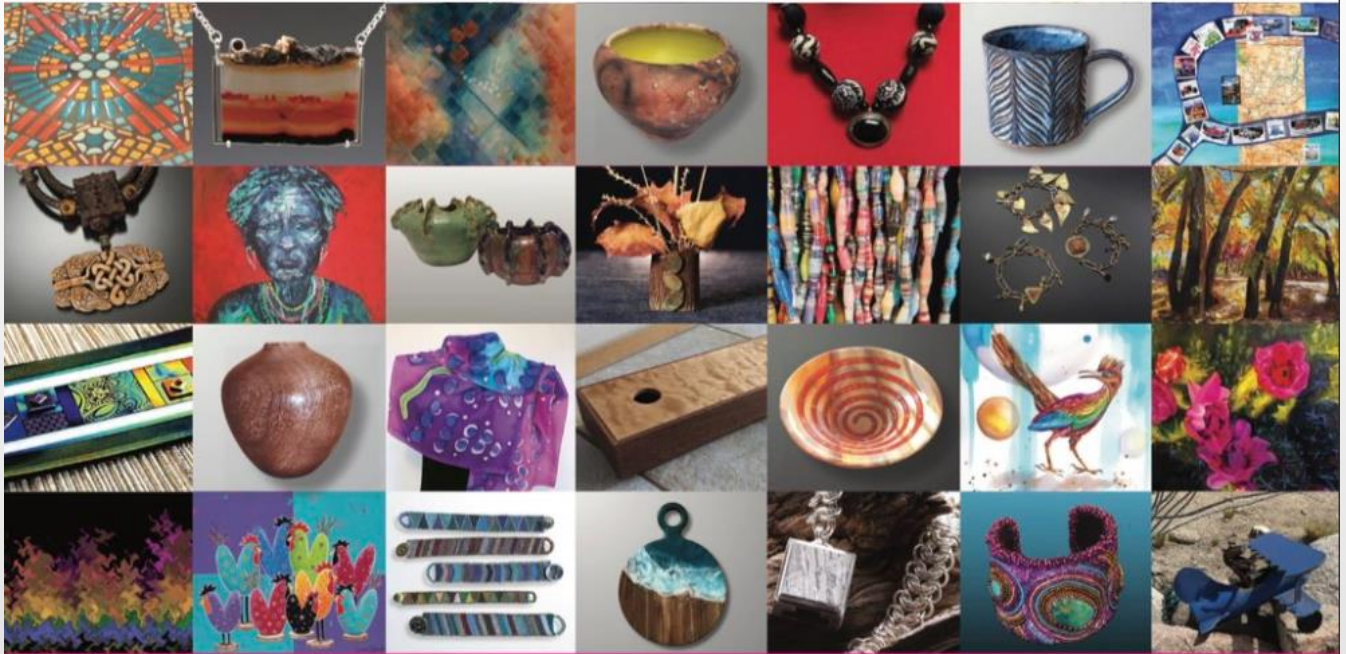
BILL MANTELLI (505) 400-0266

Event



S t u d i o A r t T o u r

B y P a t r i c i a A p t



SAND | A
HE | GHTS
ART | STS™

Studio Art Tour

September 7 and 8, 2024

SAT & SUN 10 a.m. to 5 p.m.

"For more information and a map of the Tour stops, visit www.sandiaheightsartists.com"

Article



A Word from Ron Bahm

By Ron Bahm

You may wonder why Ron Bahm was replaced on the Board. Why would he relinquish such a prestigious position that has such great benefits!

Did Ron resign because of the direction that the NMWT is going?

Did Tom fire Ron because of some infraction?

Did the Board vote Ron out for some foreign dealings?

Did Ron abandon a laptop that was found with many NMWT secrets?

NONE of these conspiracy theories are true!!

I have been a member of NMWT since 1993 and have served as Librarian (when we had DVD's to loan), State Fair Coordinator, Vice President (2 years) and President (2 years – 2012 and 2013). I have attended 5 national symposiums

I believe the secret to keeping a group active and up to date is to inject "new blood" so that is my objective. The Member at Large is a perfect position for a new person to get involved. We as a national organization are the most friendly and sharing people I know. The NMWT is in great shape and I will continue to help wherever I can. I am not going anywhere – that I know about.

Ron

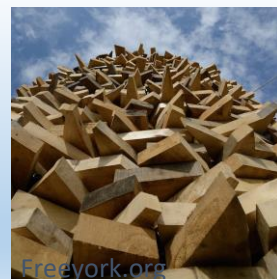
Silent Auction

C o n t a c t : N M W T T r e a s u r e r

We love to have nifty items or pieces of timber that can be auctioned at our next meeting to support the Scholarship Fund.

Potential ideas include rough turned bowls, gouges gathering dust, seasoned blanks or turning accessories.

Your contributions go to benefit the **Red Hollenbach Scholarship Fund** which is used to reduce the cost for members to attend professional demonstrator's hands-on sessions.



If you are seeking an handcrafted donation for your charitable organization, please email a request to: info@nmwoodturners.org

NMWT on Social Media



The New Mexico Woodturners are on Facebook and YouTube



Facebook is just one way to share your work. However, it's also a great platform to ask questions, request constructive criticism and rub shoulders with other turners.

Various members of the NMWTs moderate the social media accounts and promote the craft and our club actively on these outlets.

A number of the Facebook group members are not NMWT members and that's okay! However, by our NMWT membership being active on social media we can also share the benefits of club membership, promote club activities and foster relationships with turners around the globe.

Please join the Facebook group, subscribe to the YouTube channel and watch us grow turning!

Newsletter Submission

Got a great idea, tip, or trick that you'd like to share?

We'd like to read about it.

What do you need to do?

Write up a description, brief or in-depth, and include a few photos if possible to better detail your idea.

If you like or use a certain webpage or a YouTube channel, please write about and site your source.

Please send articles to news@nmwoodturners.org

Disclaimer: Articles submitted aren't guaranteed a spot in the next issue, but they will be published if educational criteria is met and as it fits organizational needs.



Newsletter

Submission

Deadline

A

u

g

26th



Green Wood

You may think you saw all we had to offer for green wood, but you ain't seen nothi' yet. August offering will be same woods but new pieces. You just might find that piece you have been looking for. Check my trailer in the usual spot for new offerings.



Green Wood Chairs

Joe "Stretch" Cole

480-216-3580

jt.cole@hotmail.com

Beads of Courage – NMWT's 2024 Challenge

Our Challenge and Goal: **For each club member to take the time and heart to make at least one Beads of Courage Box during 2023**

What is Beads of Courage?

Beads of Courage (BOC) is the NMWT's Community Service Project. Beads of Courage, Inc. is a 501 (c) (3) tax exempt organization working in partnership with the American Association of Woodturners (AAW).

[Official Guide to Beads of Courage – Woodturners Wanted](#)

This is Local!

Our Beads of Courage Bowls are taken directly to UNMH Children's Cancer Facility here in Albuquerque for local patients. However, some bowls can also be sent to a National collection point in Tucson, Arizona.

UNMH Children's Cancer Facility has been treating nearly one hundred seriously ill cancer youngsters each year. For each medical treatment a child receives, he or she gets a bead which they can then keep in their bowl, hence Beads of Courage Bowls. The children do receive a bag to put their beads in, but a Beads of Courage Bowl is far more special and reflective of the hard work to beat cancer!

NMWT currently produces approximately 8 bowls a year and it would be great to see that number increase exponentially.

For more information regarding the program, where to purchase beads, or where to deliver your finely crafted bowl, please see:



BOC Website



BOC Chair / Contacts

Scott Eckstein (NMWT BOC Contact)

505-270-0516

seemee911@gmail.com

Brianna Hayes (UNM Certified Life Specialist)

505-991-8501

bnhayes@salud.unm.edu

Abby Walker (UNM Certified Life Specialist)

505-991-8501

abCWalker@salud.unm.edu



Women in Turning

The Social Side of Woodturning

Author: Courtney Gale

One thing I've come to appreciate about our craft is that it's not just about the wood and tools - it's the amazing community we've built and the experiences we share. Like many heirloom craft groups, we span the globe while also taking root in local chapters. Whether you're a seasoned turner or just getting started, there's a place for you in our vibrant community. In this article we'll explore some fun places, some of which are your regular stomping grounds, and some into which you may have yet to venture – all with the goal of finding your people and enhancing your woodturning journey!

1. **NMWT Meetings:** Our monthly get-togethers are a blast! We enjoy awesome demos, catch up with friends, connect with mentors, join in the raffle fun, live gallery, and stay updated on upcoming events and community activities. It's where we share updates, and really feel the warmth of our local turning community. These face-to-face interactions are invaluable for learning new techniques, getting feedback on your work, and building lasting friendships with fellow enthusiasts.
2. **AAW (American Association of Woodturners):** For a super reasonable yearly fee, you get access to a treasure trove of resources - project plans, articles, safety tips, technique videos, and forums for those tricky questions. Plus, you'll get the scoop on

(Continued on the next page)

What we offer is access to the AAW site and wonderful monthly magazine, and a group of engaged and enthused turners!

Join the private

[Facebook](#) group page [Women in Turning](#) to get ideas & support. AAW membership is not required.

Women in Turning (WiT) -- The

AAW strives to deliver the publications and services that our members need to grow, connect, explore, and thrive in the areas of woodturning that are important to them.

[Guest Membership](#)

ALSO – join the AAW with a guest membership so you can see what else WiT and AAW

By signing up for a complimentary Guest membership, you can have access to AAW resources for a full 60 days. You will be able to explore what the AAW has to offer, kick our tires, and hopefully decide to become a full-fledged, paid AAW member to benefit from everything the AAW has to offer.



Local WiT Contacts

Courtney Gale (NMWT's WiT Liaison)	505-410-1678	courtneyngale@gmail.com
Nancy Matteson	801-694-6866	namatteson@hotmail.com
Kay Grant	661-599-1832	wykayg@gmail.com
Erin Perry O'Donnell	505-926-1693	erin@dovetailworkshop.com



Women in Turning

T h e S o c i a l S i d e o f W o o d t u r n i n g

A u t h o r : C o u r t n e y G a l e

2. (cont.) upcoming symposiums. The best part? All content is vetted for technique and safety. Not a member yet? Reach out, and we'll help you sign up! The AAW is an excellent way to connect with the broader woodturning community and stay on top of the latest trends and techniques in our craft.

3. Facebook: Did you know we have our own NMWT Facebook page? Join us to see photos of other members' current work, ask questions, and engage in group discussions. It's a great platform for quick updates, sharing your latest creations, and getting instant feedback from fellow turners. Find us at <https://www.facebook.com/groups/2030537477224376> or just search for "New Mexico Woodturners" on Facebook. Don't be shy - we love seeing new faces and fresh projects!

4. Instagram: It's a visual feast for woodturners! Share photos and videos of your work, connect with other turners (even the famous ones!), and build a cool virtual album of your turning journey. It might seem daunting at first, but once you start engaging, you'll be recommended to other woodturners and their posts. Instagram is perfect for those "wow" moments when you want to show off a particularly beautiful piece or an interesting grain pattern you've discovered.

5. YouTube: We all love it for tutorials, but have you considered starting your own channel? It's a great way to connect with other turners and share your knowledge. Commenting on videos can spark new connections too! Just remember to always prioritize safety when trying techniques you see online. Our club has its very own YouTube page, search New Mexico Woodturners to find it. It's a fantastic resource for both beginners and experienced turners alike.

6. TikTok: Not just for the kids! This platform is perfect for sharing quick, fun videos of your turning process or showing off your finished pieces. It's great for catchy highlights, timelapse process videos, or glamorous 360 views of finished projects. You can even share photo slideshows set to music. TikTok's short-form content is ideal for those moments when you want to share a quick turning tip or a fun moment only us woodturners would understand!

7. Reddit: Think of it as a mix of Facebook and AAW forums. Show off your work, ask questions, and get quick responses from some seriously knowledgeable folks. The woodturning community here can be surprisingly expert and responsive! Reddit's upvoting system means that the most helpful and interesting content rises to the top, making it a helpful place to learn and share.

(Continued on the next page)



Women in Turning

T h e S o c i a l S i d e o f W o o d t u r n i n g

A u t h o r : C o u r t n e y G a l e

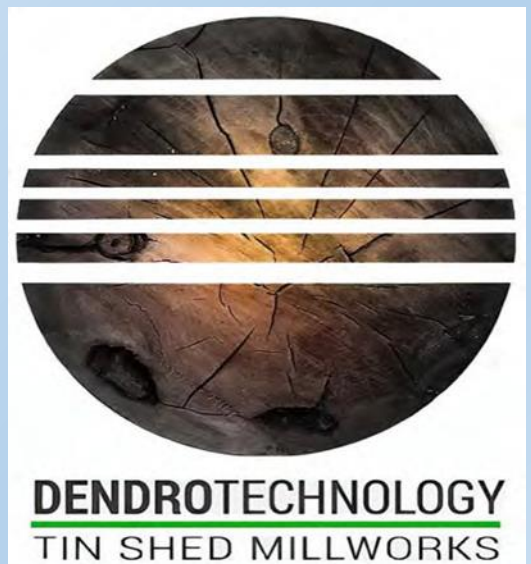
Each of these platforms offers a unique way to engage with the woodturning community. Whether you prefer the in-depth discussions on AAW forums, the visual inspiration of Instagram, or the quick tips and tricks on TikTok, there's something for everyone. The beauty of our connected world is that you can learn from and share with turners from all corners of the globe, bringing diverse perspectives and techniques to your own work.

Remember, these are just some of the ways to connect with fellow woodturning enthusiasts. Whether it's face-to-face interactions at our club meetings or global connections made online, the social aspect of woodturning can enrich your experience significantly. It's not just about creating beautiful objects; it's about being part of a supportive community that shares a passion for turning wood into art.

If you're new to any of these platforms and need help getting started, don't hesitate to ask one of our tech-savvy members or a knowledgeable friend for a hand! We're all here to help each other grow and improve in our craft.

Let's keep our woodturning community growing and thriving, both in person and online! Whether you're a seasoned pro or just starting out, there's always something new to learn and someone new to meet in the wonderful world of woodturning. So pick up that gouge, log onto your favorite platform, and let's keep the shavings flying and the conversations flowing!

Special Event Alert: Our WIT (Women in Turning) group is hosting a turning day on August 10, 2024, from 9:00 am to 4:00 pm at DendroTechnology. We'll be turning captive ring baby rattles for a children's Christmas toy donation. This is a fantastic opportunity to hone your skills while contributing to a great cause. Everyone's welcome, not just WIT members, so come join us for a day of turning, learning, and giving back to the community. Interested? Reach out to Courtney at courtneyngale@gmail.com for more info or to RSVP.



Women in Turning

Try out an American Association of Woodturners (AAW) membership for 3 months!!

We know you will be hooked!

AAW Membership Application

WIT (Women in Turning) is “dedicated to encouraging and assisting women in their pursuit of turning, sharing ideas and processes to further member’s skills and creativity, and increasing participation of women in the field of woodturning.”

The AAW WIT Committee agrees that to further this mission, we can work with chapters to help grow the number of women in AAW. Currently, women comprise less the 9% of AAW membership.

To encourage women to join AAW, the WIT Committee offers a limited number of WIT sponsored half price AAW memberships to women for a one-year, full "General" AAW membership.

Eligibility To be eligible, a grant recipient must be a woman and who has never previously been a member of AAW.

Process Only the chapter AAW WIT Liaison, Courtney Gale, chapter president or vice-president may request the grant. After we’ve received the application, the recipient will be sent a promotional code with instructions on how to use the code in applying for an AAW membership. If you have questions, please email wit@woodturner.org.

Limitations

If the nominee is a new member of a local chapter (within the last two months), WIT will pay 100% of the AAW membership.

If the nominee has been a member of a local chapter for more than two months, WIT will pay 50% of the AAW membership.

If the nominee is not a member of a local chapter, WIT will pay 50% of the AAW membership.

Grants are currently limited to no more than two women, per chapter, per quarter.

Quarters end January 31, April 30, July 31, and October 31. Based on the number of requests, this limitation may change.

We hope that this offer will be an incentive for new women woodturners to join your chapter.

[Click Here for AAW Specials for WIT](#)



Article



C o r e y H y d r a n t

A u t h o r : R i c k O ' R y a n



Emory oak, of the red oak group. The tree had rot at the base, which caused it to come down. There are some real nice colors near that rot. The emory oak is the large, semi live oak in the Burro Mountains, the southwest part of the Gila National Forest. There were many faults and cracks, so after drying it the rest of the way, I cast this in epoxy casting resin. My intent was to not feature the resin, and have it blend in with the colors in the wood. This hydrant is modeled after a design produced by Glamorgan Works, of Lynchburg, VA, which was patented in 1897. The base is 5-1/2" diameter, and 13-3/8" to the base of the harp. It is 8" across the port cap nuts. The lamp switch is in the right port, activated by the port "penta-bolt head". For a lefty I can move the switch to the left port. No 1176. The "Copper Empire Mystic Topaz" shade is from JustShadesNY.

(Continued on the next page)

Article



C o r e y H y d r a n t

A u t h o r : R i c k O ' R y a n



Photo Gallery



Instant

B e a d s o f C o u r a g e



Ron Bahm

Please send gallery photos by the 3rd Saturday of the month to
gallery@nmwoodturners.org

Photo Gallery



Instant



Bob Rocheleau Wedding Vase



Bob Rocheleau Balloon



Tom Durgin Sycamore Bowl

Please send gallery photos by the 3rd Saturday of the month to
gallery@nmwoodturners.org

Photo Gallery



Instant



Tom Durgin Juniper Yarn Bowl



Tom Durgin Spalted Yarn Bowl



John Spitzenberger Seed Pot

Please send gallery photos by the 3rd Saturday of the month to
gallery@nmwoodturners.org

Photo Gallery



Instant



Hy Tran Cypress Bowl



Scott Eckstein Segmented
Hollow Form



Hy Tran Apple Platter

Please send gallery photos by the 3rd Saturday of the month to
gallery@nmwoodturners.org

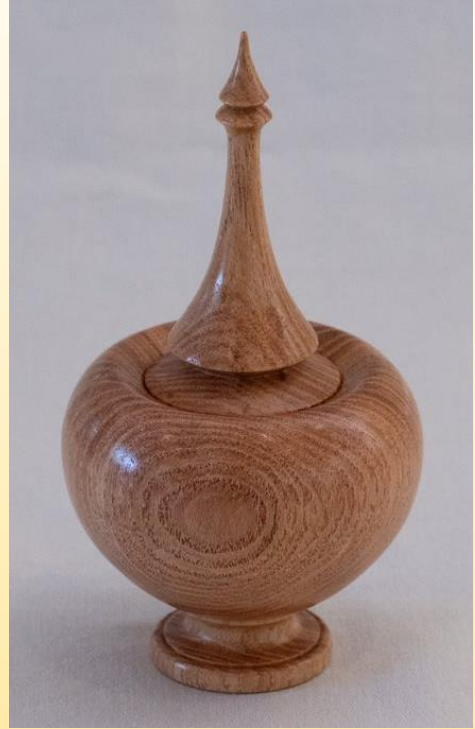
Photo Gallery



Instant



Dave Croxton Pepper Mill



Dave Croxton Lidded Box



Greg Fryeweaver Square Bowl

Please send gallery photos by the 3rd Saturday of the month to
gallery@nmwoodturners.org

Photo Gallery



Instant



Larry Evans Platter



Larry Evans Serving Tray



Ray Davis Segmented Bowl

Please send gallery photos by the 3rd Saturday of the month to
gallery@nmwoodturners.org

Photo Gallery



Instant



Ray Davis Winged Bowl



Ray Davis Segmented Bangles



Jim Harrison Segmented Hollow

Please send gallery photos by the 3rd Saturday of the month to
gallery@nmwoodturners.org

Marketplace

ONEWAY 1018 Mini Lathe on a factory stand for sale

This a high quality lathe with a hardened spindle. Everything is in excellent condition. It has a 10" swing over the bed and 18" between centers. It comes with the extension bed that increases the length between centers to 42". You also get a tool rest banjo and tool rest, a steady rest and 12 assorted turning tools. You can look up all the Oneway 1018 lathe specifications on line at www.onewayeuropa.com. This model can't be purchased new anymore but it is still supported and a full line of new Oneway accessories are available at reasonable prices. An advantage to this lathe design is a very small diameter head stock offering little tool interference when turning from the head stock side. The one horsepower variable speed motor runs smoothly in forward and reverse.

I am selling for a friend. Price \$995.00 for the whole kit. Call Eddie Bell 505 440 4997

If anybody is interested in some burls, a tree guy named Junior has some Oak burls for sale he is asking \$500 for 5 pieces. No idea of the size. his phone # is 505-504-4434.



Wanted



Used Wagner or
Robert Sorby
Texturing/Spiraling
tools.

Please contact Bill Baca @
425-218-4562

Bridge for Sale



This is a sample marketplace posting.

We welcome members to use this space for anything related to woodturning. There is no charge for listing an item. Ads will run for about one month.

To request a listing, send item and contact info to sale@nmwoodturners.org. Your ad will be reviewed and posted as quickly as possible.

*** You must be an NMWT member to post ads ***

See our Marketplace section on our website for better photos

2022 Elected Officers, Directors & Committee Chairs

President



Tom Durgin
505-688-1369

Vice President



Larry Linford
505-870-1601

Treasurer



Woody Stone
828-808-7876

Secretary



Sally Breedon
505-352-0159

State Fair



Bill Mantelli
505-400-0266

Membership



Tom McLarty
505-298-3790

Webmaster



Dennis Cahill
505-620-2508

Lead Video



Derek Roff
505-438-1820

Email Administrator



Hy Tran
505-459-8132

Member-at-Large



Mark Miller
505-350-8584

Equipment & Workshops Beads of Courage Chair



Scott Eckstein
505-270-0516

Logistics



Bob "Rocky" Rocheleau
505-235-9002

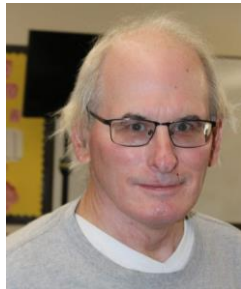
SEEKING

Green wood help

Please speak to a board member regarding any of these positions

2022 Elected Officers, Directors & Committee Chairs

Raffle Coordinator



Dean Cross
575-644-8945

Special Workshops



John Ellis
505-463-7750

Green Wood Manager(s)



Green Wood Manager(s)



Joe "Stretch" Cole
480-216-3580

Past President



Rick Judd
612-280-8300

Newsletter Designer



Traci Durgin
news@nmwoodturners.org
505-688-1370

Apparel Manager



Dave Croxton
505-803-5521

Fiber Arts Rep



Shana Lane
505-270-6442

Photographer

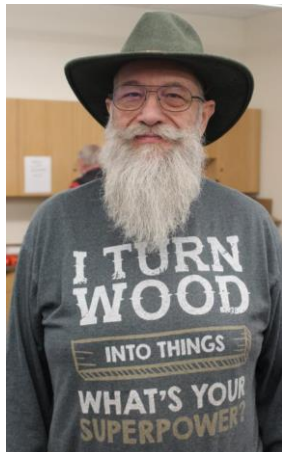


Nancy Matteson
galleries@nmwoodturners.org
801-694-6866

Mentors

Bill Zerby

505-263-6632
Rio Rancho – NM
528 & Southern



Basic spindle turning
& tool sharpening

Scott Kershaw

406-274-2931
Rio Rancho –
Unser & Westside



Basic woodturning skills to
include bowls, plates, platters,
spindle projects; Green wood
processing, coring and twice
turning; Tool sharpening and
lathe maintenance

Hy Tran

505-459-8132
Albuquerque –
Paseo & Ventura



Beginner and Novice
woodturning

John Ellis

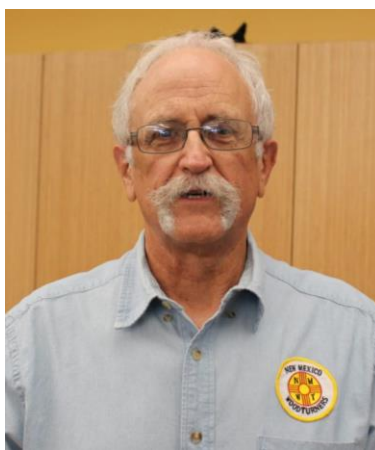
505-463-7750
Placitas



Basic turning, plates,
tools & handles

Larry Linford

505-870-1601
Albuquerque



Basket illusion turning
and embellishment

Bob “Rocky” Rocheleau

505-235-9002
Albuquerque – NE Heights



Segmenting and bowl
turning

Free to NMWT members: give a Mentor a call!

*****WE ARE ALWAYS SEEKING NEW MENTORS*****

Mentors

Rick Judd

612-280-8300
East Mountain



Hollow forms, bowls,
lidded boxes, burls,
natural edge

Ron Bahm

505-881-8845
Albuquerque – NE
Heights



Pen turning, beginning
segment construction,
beginner woodturning

Ray Davis

505-221-4622
Rio Rancho, NM – NW side
raylindavis@r-davis.com



Open and closed Segment
bowls. Stave Bowls, Bowl
turning. Pens.

I have a heated and a/c shop
with 2 lathes ready to go.

Don Roden

763-234-5780
Dovetail Workshop



Skew, carbide tools,
bowls and advanced
turning techniques, like
epoxy turning, finials, and
offset turning

YOUR NAME

Your phone #
Your location



What can you offer?
Help us fill this space

YOUR NAME

Your phone #
Your location



What can you offer?
Help us fill this space

Free to NMWT members: give a Mentor a call!

*****WE ARE ALWAYS SEEKING NEW MENTORS*****

Quick Reference List

(Printer Friendly Version)

2022 NMWT Elected Officers, Directors & Committee Chairs


news@nmwoodturners.org

President	Tom Durgin	505-688-1369	Newsletter Editor	Help Needed	
Vice President	Larry Linford	505-870-1601	Newsletter Designer	Traci Durgin	
Treasurer	Woody Stone	828-808-7876	Photographer(s)	Nancy Matteson	801-694-6866
Secretary	Sally Breeden	505-352-0159	Raffle Coordinator	Dean Cross	575-644-8945
State Fair	Bill Mantelli	505-400-0266	Fiber Arts Rep	Shana Lane	505-270-6442
Membership	Tom McLarty	505-298-3790	Equip/Workshops	Scott Eckstein	505-270-0516
Webmaster	Dave Stein	505-266-0356	Green Wood	Help Needed	
Lead Video	Derek Roff	505-438-1820	Green Wood	Joe "Stretch" Cole	480-216-3580
Email Administrator:	Hy Tran	505-459-8132	Logistics	Bob Rocheleau	505-235-9002
Member-at-Large	Mark Miller	505-350-8584	Special Workshops	John Ellis	505-463-7750
Past President	Rick Judd	612-280-8300	Apparel Manager	Dave Croxton	505-803-5221

Quick Reference List for Mentors

Free to NMWT members: give a Mentor a call!

Bill Zerby Rio Rancho – NM 528 & Southern	➡	505-263-6632	➡	Basic spindle turning & tool sharpening
Hy Tran Albuquerque – Paseo & Ventura	➡	505-459-8132	➡	Beginner and novice woodturning
Don Roden Dovetail Workshop	➡	763-234-5780	➡	Skew, carbide tools, bowls and advanced turning techniques, like epoxy turning, finials, and offset turning
Larry Linford Albuquerque	➡	505-870-1601	➡	Basket illusion turning and embellishment
Rick Judd East Mountain	➡	615-280-8300	➡	Hollow forms, bowls, lidded boxes, burls, natural edge
Ron Bahm Albuquerque – NE Heights	➡	505-881-8845	➡	Pen turning, beginning segment construction, beginner woodturning
Bob "Rocky" Rocheleau Albuquerque – NE Heights	➡	505-235-9002	➡	Segmenting and bowl turning
Ray Davis Rio Rancho – NW side.	➡	505-221-4622	➡	Open and closed Segment bowls. Stave Bowls, Bowl turning. Pens.
Scott Kershaw Rio Rancho – Unser & Westside	➡	406-274-2931	➡	Basic woodturning skills to include bowls, plates, platters, spindle projects; Green wood processing, coring and twice turning; Tool sharpening and lathe maintenance.

Members are always welcome to contact the people on the mentor list for guidance to better turning ideas and techniques

WE ARE ALWAYS SEEKING NEW MENTORS

Membership Renewal

Membership Dues

Membership dues renewals are due on or before the last day of the month in which the member's current membership term expires. Members who do not renew within thirty (30) days after their membership expiration date will no longer have access to member privileges and will no longer receive the monthly newsletter. Annual dues are as follows:



One year: \$30 for an individual; \$35 for a family
Two Years: \$55 for an individual; \$65 for a family
Three Years: \$75 for an individual; \$90 for a family
Lifetime: \$300 for an individual; \$350 for a family

Additional Fees

1. An individual member who subsequently adds family members will pay the difference between the individual dues and the family dues rate for the remainder of that membership year (i.e., a one-year individual member adding family members would pay an additional \$5.00 dues for the remainder of the membership year).
2. A member requiring a mailed copy of the monthly newsletter will pay an additional \$10 per year to cover cost of mailing.

Renew Online

We are very pleased to announce that you can now pay your membership dues with a credit card on the NMWT website at:

<https://www.nmwoodturners.org/>.

To access online dues payment, simply go to the new "Membership" tab near the top of the homepage and select "Pay Online" from the drop-down menu. This will take you to a secure website managed by Converge, our credit card service provider. There you will find a series of "Buy Buttons" that are clearly labeled with each membership dues option. Simply select the dues option that you want and then hit the "Checkout" button.

You will need to fill in all of the contact information on the payment processing page so that the Treasurer can confirm that our membership records are up to date and also so that he can send your new membership card by regular mail. Also, due to some reporting limitations of the Converge website, you will need to once again select the dues option you want from the drop-down menu labeled "Items Purchased". Fill in your credit card information and hit the "Submit Payment" button to complete the transaction. You should receive an "Order Confirmation" with full details of your purchase by e-mail, and the Treasurer will mail your membership card to you. That's all there is to it!

[Web-Based Credit Card Dues Payment Now Available](#)

Renew by Mail

You can, of course, still mail a check along with current contact and e-mail information to our **Treasurer, Woody Stone, at 2 Blue Corn Ct. Sandia Park, NM 87047.**

The easy way to do that is to go to that same new "Membership" tab on the NMWT homepage and select "Membership Form" from the drop-down menu.

Fill in the form (**PLEASE PRINT CLEARLY**) and mail it to Woody with your check. Should you have any issues or questions regarding the new Credit Card payment system or if you are not sure if your membership expires at the end of 2020, feel free to call Woody at 828-808-7876 or e-mail him at eesphoto492@gmail.com.



Scan our QR code to access our webpage



How to Contribute to High Desert Turning

The NMWT's newsletter editor has submitted High Desert Turning to the AAW's 2020 and 2021 Best Chapter Newsletter Contest. Unfortunately for the NMWT, High Desert Turning has not been selected in the top 3 chapters either year. However, the NMWT chapter website won 1st prize in 2020 for the Best Chapter Website Contest. So, we know it's possible to rank highly among the numerous chapters of the AAW. Much of the website content can be found in High Desert Turning.

So, now you ask, "What is in it for me?" Well, we will get to that. But first, our ask is this:

Submit a short snippet, article or outline of a shop tip or trick you use. You'll be surprised by how many folks will benefit from your personal idea or solution. Take 2, 3, 4 or 5 photos of your process, pieces or how your tip or trick comes together to illustrate how the membership can implement your idea in their shop. If appropriate, share credit where credit is due should you have benefited from a social media post, YouTube video or viewing an in-person demonstration.

Please consider contributing to the NMWT newsletter High Desert Turning! No tip too elementary and no trick too simple will go unpublished. We count on you to make our newsletter awesome. Please send your contribution to news@nmwoodturners.org

Here's what's in it for you:

You are inspiring dozens upon dozens of other turners implement shop solutions that ease their way and improve their flow and turning. You have ideas and solutions that many folks likely envy and would benefit from knowing. There's gratification in uplifting fellow turners.

The club has a large tote of exotic, seasoned and figured timber that was acquired during lockdown and you will be free to select a piece of your choice for every published tip or trick. The tote has wonderful turning stock and you can rifle through it for your choice.

NMWT's Logo Apparel

Caps (Baseball)	\$15
Long Sleeve Denim Shirt	\$30
Short Sleeve Denim Shirt	\$30
Short Sleeve Snap Shirt	\$30
Polo (golf) Shirt w/Pockets	\$30
T-Shirt V-Neck	\$20
Smocks	\$50

Items include embroidered NMWT logo

Names embroidered on shirts are additional \$5.00. Sizes XXL, 3XL, 4XL and up are an additional \$3.00.

Contact: info@nmwoodturners.org

Get order forms at the club meetings or use the links below to access the order forms. Once completed, turn your form in to a board member with payment. *Orders are submitted on a quarterly basis.*

Full payment for an order will need to be submitted with each order form before it can be processed! Order placement cut off dates for each quarter will be as follows:



Order Info

NMWT Shirt/Cap Form

NMWT Smock Order Form

Quarter	Months	Order Meeting	Delivery Meeting
1st	Jan-Mar	Feb	Mar
2nd	Apr-Jun	May	Jun
3rd	Jul-Sept	Aug	Sept
4th	Oct-Dec	Nov	Dec

Discount & Rebate Partners

DAKOTA

Dakota Hardwoods -

Albuquerque, NM

3700 Singer Blvd. NE, Suite A, Albuquerque,
NM 87109

Office: 505-644-WOOD (9663)

Monday-Friday: 8:00am - 5:00pm

Saturday-Sunday: Closed

Say you are with the NMWT for a discount.



NMWT members receive Wholesale Prices. Rugby's has hardwoods, Thermofused Melamine, plywood, veneers, and furniture grade pine.

Penn State Industries

your wood turning & dust collection source | 1-800-377-7297

www.pennstateind.com

Register as a member of New Mexico Woodturner at Penn State Industries and automatically get 10% off (in addition to most other promos) your entire order !!! Yes! In effect, you will be doubling dipping on the discounts!!!

Register by sending an email to hy.d.tran@gmail.com with the name, address and email to which your Penn State catalogs are sent. Once you're registered, you'll automatically get 10% off every time you shop online (not applicable to phone or mail orders).



DENDROTECHNOLOGY
TIN SHED MILLWORKS

(505) 980-6161 www.dendrotsm.com

LIVE EDGE SLABS, TURNING BLANKS, CUSTOM MILLING

We offer 10% off our listed prices to members and give a free item from our oddments box or a turning blank to first time member customers.



**8100-M4 Wyoming Blvd. NE, #188
Albuquerque, NM 87113**
