



High Desert Turning

You're gonna love the way you turn.
We guarantee it!



Membership details found within www.nmwoodturners.org

NMWT's Upcoming Monthly Meeting

Club Meetings are generally held 10:00 am to 12:30 pm on the first Saturday of the month



Fluted Bowl by Al Stirt

<http://www.alstirt.com/Index.html>

Who: Larry Lindford & Tom Durgin

Topic: Indexing & Carving

When: Apr 2nd, 2022 10:00 am MT

(zoom session opens at 9:30 am).

Where: North Domingo Baca Multigenerational Center
7521 Carmel NE Albuquerque, NM 87113

Please see next page for more information regarding guest speaker(s)

The President's Turn

It has been a long two years since we last met in person and some things have changed and some has not. When we last met a North Domingo Baca Mutigenerational Center had a large new addition being added. That addition has been completed and we will be meeting in a new space on the second floor. We have endured two years of Zoom meetings and now we will now have a hybrid meeting with both in-person and zoom. I am looking forward to getting back together for in-person meetings and connecting with all of you.

Sunday, 3/20 was a meeting of Women in Turning and there were ten women there and one was from Los Alamos. It is exciting to see this group of women interested in turning get together and see how they can help each other out. I am excited for that group and would like to see other ways that we can reach out and share our love of turning with. If you are like me, I want to share my love and passion for turning with others.



Don Roden, NMWT President

We are starting to start turning Pen's for the Troops. Larry has kits for anyone that wants to do some individually. We will also be having some events to invite the public to meet and turn a pen or two that will go towards our club goal of 400 this year. I am creating an event on April 9th that will be at Dovetail and for veterans and active duty to come and turn pens. My goal is that we turn 128 pens that day in 6 hours. There will be more to come in the next few months, and we will be sending emails out to inform you of when and where they are happening. We look forward to seeing you at as many as you can attend.

Looking forward to seeing you at our meeting on April 2nd. Don

NMWT's Upcoming Monthly Meeting

Larry Lindford & Tom Durgin Indexing & Carving

How in the heck did they do that cool carving? How in the heck do they set up to create those crazy basket weave platters?

This month we are going to introduce you to a couple of topics: indexing and carving and how they can be combined. Did you know your lathe likely has some sort of built in indexing? They often don't offer too many graduations, but they're a good place to start. If your lathe doesn't offer indexing, or you want to increase the number of divisions, you can build your own indexing jigs flexible enough to do nearly anything you want. If you're not into DIY (Do It Yourself) jigs, there are ready-made tools available from various sites – including our own Doug Schneitor.

Carving is another turning enhancement through which you can decorate your work to make it stand out in a big way. It can be done in so many different ways - hand carving, power carving with tools ranging from the fine Dremel to larger multitools and grinders.

And you can combine carving with indexing to make the most aesthetic use of surface space and create artistic, pleasing designs.

Future Programs/Activities

Apr	Larry Lindford & Tom Durgin	Indexing & Carving
May	Rick Judd	Sharpening Your Tools
Jun	Bill Zerby	Left-handed turning & Back Hollowing Techniques
Jul	TBD	TBD

‡ DEMOS ARE SUBJECT TO CHANGE

On April 2nd, join our very own Larry Linford and Tom Durgin for an introduction to carving and indexing at North Domingo Baca Multigenerational Center (our first “live and in person” demonstration in two years)!

Reflections from Last Month's Meeting

Jeff Hornung's "Finishing the Finish"

I remember a club meeting years ago, prep for the State Fair. Our judges, most experienced turners were talking about what we should look for with our entries. The thing that really sticks out in my mind is how many great pieces they said were ruined by the finish.

Last month we were treated to not just a demo, but some much needed education for many of us. For sure I need to learn how NOT to mess up my nice pieces by failing to properly finish. Jeff Hornung from the Walnut Log was with us. Jeff is a lifelong artist, he was included in the book Masters of Contemporary Wood Art, his work is featured in galleries. Jeff demonstrators both nationally and internationally and teaches at the St Louis Craft Alliance.

Main points from Jeff's demo were:

- Match your finish to the piece's function
- Food safe - what the heck does that mean?
- Finishing cuts
- Sanding
- Sealers
- Abrasive pastes
- And of course all kinds of finishes

Remember members, you can watch the demo again or for the first time if you missed it. He was also kind enough to give us a discount at The Walnut Log and make himself a permanent resource to all of us. See you at the next meeting!

Tom Durgin

***HELP

Green Wood

NEEDED***

The Green Wood Committee is always grabbing green wood in the community and keeping it out of the landfill. There are endless projects that can be done with greenwood. See a board member for more information.



Catalpa (Catalpa bignonioides)



Cottonwood



Mulberry

Beads of Courage – NMWT's 2022 Challenge

Our Challenge and Goal:

For each club member to take the time and heart to make at least one Beads of Courage Box during 2022



NMWT currently produces approximately 8 bowls a year and it would be great to see that number increase exponentially.

For more information regarding the program, where to purchase beads, or where to deliver your finely crafted bowl, please Scott Eckstein 505-270-0516 or our NMWT Beads of Courage Chair.

What is Beads of Courage?

Beads of Courage is the NMWT's Community Service Project. Beads of Courage, Inc. is a 501 (c) (3) tax exempt organization working in partnership with the American Association of Woodturners (AAW).

This is Local!

Our Beads of Courage Bowls are taken directly to UNMH Children's Cancer Facility here in Albuquerque for local patients. However, some bowls can also be sent to a National collection point in Tucson, Arizona.

UNMH Children's Cancer Facility has been treating nearly one hundred seriously ill cancer youngsters each year. For each medical treatment a child receives, he or she gets a bead which they can then keep in their bowl, hence Beads of Courage Bowls. The children do receive a bag to put their beads in, but a Beads of Courage Bowl is far more special and reflective of the hard work to beat cancer!



Elias is featured on BeadsofCourage.org with his prized wood turned box



Member Estate/Shop/Tool Sales Notice

About 5 or 6 of us have organized tool sales for shop tool reductions or helping spouses sell the tools that a deceased member had acquired. *We have done this for about a dozen situations and have noticed a definite decrease in interest and purchases.* We price items at 50% of retail if tool is in good shape and less if tool shows a lot of use. **This notice is to inform, ESPECIALLY NEW WOODTURNERS, that you are missing out on some real bargains on power tools, hand tools and wood.** Most wood workers value their tools and take good care of them and, as such, are of good value to pass on to the buyer. These sales are also often a great source of high-quality turning blanks. *We give sellers a free service AND give them real hope that our members will clean their space of tools.* These sales are especially a real good opportunity for NEW WOODTURNERS to fill out their shop and we HIGHLY encourage all members to pay close attention to these sales. Undoubtedly more will happen.



Sincerely yours,
"The estate sales team"

**Keep your eyes and ears open for upcoming tool
and wood sales.**



Silent Auction

Please, while staying home, find nifty items or pieces of timber that can be auctioned at our next meeting to support the Scholarship Fund.

Ideas include rough turned bowls, gouges gathering dust, seasoned blanks or turning accessories.

Your contributions go to benefit the Red Hollenbach Scholarship Fund which is used to reduce the cost for members to attend professional demonstrator's hands-on sessions.



Jerry Kermode coaches an attendee at a hands-on class

Our Turn to Be Thankful

Sally is one of the rare gems who tirelessly gives of herself behind the scenes, seeking no cudos, compensation or credit for her efforts. While on the board I personally experienced the work she does for the club and she is well deserving of the thanks from the members. My "hat" is off to Sally for a job done well! Bill Baca

Her wonderful sense of humor and attitude. Kathy Knorr

Sally Breeden

Her "gentle" reminders when we say we'll do something, but it hasn't been done - and the deadline is fast approaching.

Her superhuman organizational skills.
Her willingness to take on any task.
Larry Lindford

I am thankful for Sally because when needed she can be Guido. She works hard for us, we are oh so lucky to have her as part of the NM Woodturners. Her attitude is always great, she herds us cats and keeps us moving forward. Thanks Sally! Tom Durgin

Sally is doing something she obviously does not have to do. She is doing all in the honor of Jim. Don't know if she pays annual dues BUT we should give her dues FREE for her very professional, prompt work. She is a valuable asset!
Ron Bahm

NMWT's on Social Media



The New Mexico Woodturners are on Facebook and YouTube



Various members of the NMWTs moderate the social media accounts and promote the craft and our club actively on these outlets.

Facebook is just one way to share your work. However, it's also a great platform to ask questions, request constructive criticism and rub shoulders with other turners.

A number of the Facebook group members are not NMWT members and that's okay! However, by our NMWT membership being active on social media we can also share the benefits of club membership, promote club activities and foster relationships with turners around the globe.

Please join the Facebook group, subscribe to the YouTube channel and watch us grow turning!

Upcoming Event



Turning Pens for the Troops New Mexico Woodturners are turning pens for the troops.

The pens will then be distributed to military personnel overseas and/or wounded troops currently hospitalized or convalescing, via a national project hosted by Woodcraft, Inc.

We are inviting Veterans and Active Military to spend time and turn pen(s) for the troops on April 9th from 9 am to 3 pm. Come any time and stay for as long as you want.

Each participant will make a pen, starting under the supervision of the instructor, but will most likely make the last pen(s) completely on his/her own.

Come and share time with other veterans and have a fun time making something for those who are carrying on the mission.

Our goal is 128 Pens in these six hours.



We will be turning at Dovetail
Community Workshop

6102 Jefferson Ave NE Suite d
Albuquerque, NM 87109



Women Turners

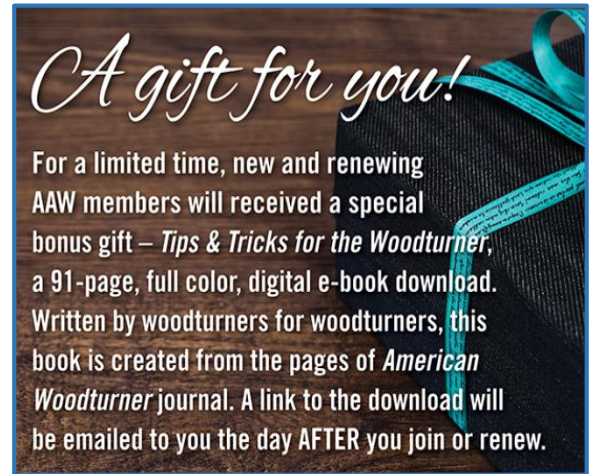
Try out an American Association of Woodturners (AAW) membership for 3 months!!

We know you will be hooked!

AAW Membership Application

WIT (Women in Turning) is “dedicated to encouraging and assisting women in their pursuit of turning, sharing ideas and processes to further member’s skills and creativity, and increasing participation of women in the field of woodturning.”

The AAW WIT Committee agrees that to further this mission, we can work with chapters to help grow the number of women in AAW. Currently, women comprise less the 9% of AAW membership.



To encourage women to join AAW, the WIT Committee offers a limited number of WIT sponsored half price AAW memberships to women for a one-year, full "General" AAW membership.

Eligibility To be eligible, a grant recipient must be a woman and who has never previously been a member of AAW.

Process Only the chapter AAW WIT Liaison, Kay Grant and Sally Breeden, chapter president or vice-president may request the grant. After we’ve received the application, the recipient will be sent a promotional code with instructions on how to use the code in applying for an AAW membership. If you have questions, please email wit@woodturner.org.

Limitations

If the nominee is a new member of a local chapter (within the last two months), WIT will pay 100% of the AAW membership.

If the nominee has been a member of a local chapter for more than two months, WIT will pay 50% of the AAW membership.

If the nominee is not a member of a local chapter, WIT will pay 50% of the AAW membership.

Grants are currently limited to no more than two women, per chapter, per quarter.

Quarters end January 31, April 30, July 31, and October 31. Based on the number of requests, this limitation may change.

We hope that this offer will be an incentive for new women woodturners to join your chapter.

Specials for WIT:

<https://www.woodturner.org/Woodturner/2020%20Grants/WIT%20membership.aspx?WebsiteKey=c9100f02-c77e-4177-a9bc-7d3eb0216238>

Women Turners

Meeting Notice

On Sunday, March 20 ten women met at Dovetail Community Workshop in Albuquerque. The topic of discussion was the formation of a Women in Turning (WIT) group.

Some of the women are currently teaching woodturning, some are new to the art and one had never turned before but because she has been taking woodworking classes at Dovetail, wants to learn to turn. One of the members came from Los Alamos, some from Santa Fe and the others from the Albuquerque area. Kathy Knorr joined us from Santa Fe via Zoom.

There was a good deal of discussion about what we wanted, or needed to learn, from the formation of this group. It was an extremely interesting discussion about how we will go about forming the group, (i.e. formal club or informal group), whether we would become a chapter of AAW/WIT or be a "subgroup" within NMWT. A lot of good ideas were thrown into the mix.

At our next meeting on Sunday, April 24 we will formalize who we want to be and how we will proceed. The one idea that was decided on is that we will be meeting at Dovetail. This location, which is also a woman owned business, gives us a classroom separate from the working floor and multiple lathes to use for teaching and demonstrations. Erin, Dovetail's owner is also a member of this group. AAW and NMWT. **Because of the distance some of our members travel, meetings will for the foreseeable future be on Sundays at 2 PM.**

Any woman who either is a wood turner or is interested in learning more about this art is welcome to come to the meetings. For more information please feel free to contact either of the women listed below:

Kathy Knorr in Santa Fe kathyknorr@gmail.com

Erin Perry O'Donnell in ABQ erin@dovetailworkshop.com

Kay Grant in Rio Rancho wykay@gmail.com



We have a local group of women in turning and invite you to join us!! What we offer is access to the AAW site and wonderful monthly magazine, and a group of engaged and enthused turners!



Women in Turning

Women in Turning (WiT) -- The American Association of Woodturners (AAW) strives to deliver the publications and services that our members need to grow, connect, explore, and thrive in the areas of woodturning that are important to them.

Are you on Facebook? Join the private group page Women in Turning [Women in Turning | Facebook](#) to get a feeling of the ideas, support, and work of 1,700-member group! AAW membership is not required.

ALSO – join the AAW with a guest membership so you can see what else WiT and AAW [Guest Membership \(woodturner.org\)](#)

By signing up for a complimentary Guest membership, you can have access to AAW resources for a full 60 days. You will be able to explore what the AAW has to offer, kick our tires, and hopefully decide to become a full-fledged, paid AAW member to benefit from everything the AAW has to offer.

WiT Local Contacts

Kay Grant	661-599-1832
Kathy Knorr	874-819-2515
Sally Breeden	505-352-0159

NMWT's is Seeking Volunteers

**Now that life is returning to some sort of normalcy, we are in
NEED of Volunteers for these positions:**

Newsletter Editor (please see a board member) – Need someone to manage and coordinate content of newsletter

Apparel Manager (please see a board member)

Green Wood Manager (please see a board member) - Green wood is a major incentive of club membership! Having access to green wood is often priceless for many of us, too. The New Mexico Woodturners needs a new chairperson for the Green Wood Committee. The position is ideally filled by a member who has space to keep bolts and logs of timber as well as a truck or trailer for transporting wood from donors and to meetings.)

Set Up/Clean up crew for monthly meeting (need 4-5 people) call Rocky 505-235-9002. I would like to have the clean-up crew serve on a 3 month basis, then have another group for 3 months. Chairs will not have to be moved.



cliparthut.com

Thoughts from Exotic Woods

Saturday, March 19, 2022

Wood Hardness

A Lesson on Wood.

Issue

#10

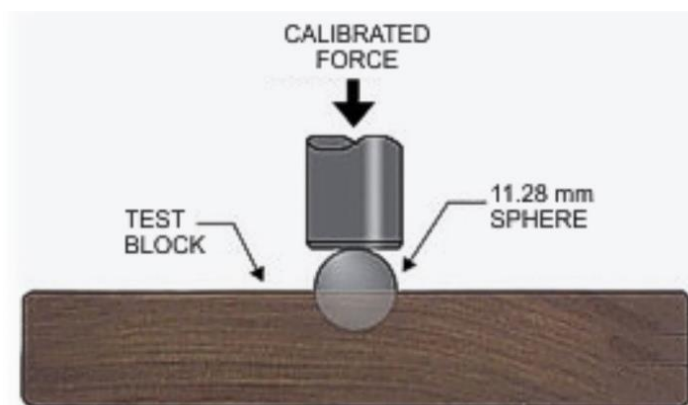
Wood Hardness Scale

Determining Wood Hardness

This number is incredibly useful in directly determining how well a wood will withstand dents, dings, and wear—as well as indirectly predicting the difficulty in nailing, screwing, sanding, or sawing a given wood species.

The actual number listed in the wood profile is the amount of pounds-force (lbf) or newtons (N) required to imbed a .444" (11.28 mm) diameter steel ball into the wood to half the ball's diameter. This number is given for wood that has been dried to a 12% moisture content, unless otherwise noted.

For reference, white oak has a Janka hardness of 1,350 lbf (5,990 N), while the super-hard lignum vitae has a hardness of an astounding 4,390 lbf (19,510 N). (Who could imagine a wood species that is over three times harder than white oak?) On the lower end of the spectrum, basswood has a hardness of around 410 lbf (1,820 N).



Leadwood: Heartwood is a rich, reddish brown to dark brown; color darkens with age. Clearly demarcated sapwood is a pale yellow.

(Continued on Next Page)

Thoughts from Exotic Woods (cont.)

Saturday, March 19, 2022

Wood Hardness

A Lesson on Wood.

Issue

#10

In-Stock but Limited Exotics

Leadwood: South African with a hardness of 3,570 lbf on the Janka Hardness scale. The weight is higher at 76 pounds per cubic foot. Generally more difficult to work without sharp cutters and tools. However it will take a great polish turning with negative rake tools. Not generally available for sale commercially.

Cocobolo: From Central America and having some of the most interesting natural color patterns. It has a hardness of 2,960 on the hardness scale. The weight is lighter at 69 pounds per cubic feet. It is harder to obtain due to the wood being listed on the CITES list and is sought after for musical instruments and ornamental turnings.

Lignum Vitae: Central American growth area with a hardness of 4,390lbf on the Hardness scale and sits at pounds per cubic foot. Some of the more common uses include tool handles, mallet heads, bearings, bushings, pulley wheels, and turned objects. It does turn and finish well due to its high oil content and will be difficult to glue. See below for more information.

African Blackwood: Found in the dryer regions of Central and Southern Africa. It is 3,670lbf in hardness and 79 pounds per cubic foot. Primarily comprised of the dark heartwood with very thin yellow sapwood. Most often used in turned objects.



Example of Cocobolo

Persimmon: Primarily grows in the Eastern United States. Also known as White Ebony. It is 2,300lbf on the hardness scale and 52 pounds per cubic foot. Usually very yellow sapwood and has small amounts of Heartwood that is darker brown or black streaks. Similar in appearance to Ebony. Turns and finishes well.

Gaboon Ebony: Grows along the equator in West Africa. True dark black in color. The hardness comes in at 3,080 lbf per the Janka Scale, and weighing 60 pounds per cubic foot. Some of the most expensive of exotic lumber and can cost more than most of the Rosewoods. Usually seen as smaller pieces in musical instruments, pool cue parts and small turned accent pieces.

Genuine Lignum

The colors can range from a light olive green to a darker greenish brown to almost black and weighs in at 84 pounds per cubic foot. The end-grain pores will be arranged in single pores in a random pattern.

Argentine Lignum

The color can range from a light olive or yellowish green to a deep brownish green weighing in at 81 pounds per cubic foot. The end-grain pores will be arranged in groups or pairs and will be arranged vertically, or radially.



Just Look What You've Done!

by Sally Breeden

The Sunday edition of the *Albuquerque Journal* features a section called "Life in New Mexico". After seeing month after month of articles about oil painting, pottery, sculpture, and what kind of music is played while perfecting a facial wrinkle remover, it occurred to me that woodturning needed some exposure! After all, New Mexico Woodturners creates art and function! This is the first step toward making your craft and contribution more visible and to fulfill part of the mission, which is education.

In advance of the 30th anniversary of the formation of NMWT this coming August, an effort will be made to "tell the world" what the craft is all about.

With that in mind, I requested last year that NMWT members list what they believe to be some of the outstanding ways this group of talented and skilled artisans have shared their work with others. Response was immediate and impressive. Emails flowed and texts flew! Because the past two years have taxed us in so many ways that we may find ourselves questioning our talent or value to others. This is a good time to remember some of the many ways each of you – individually or collectively – have made life much more rewarding on so many levels.



Steve Gallegos tests his tops – State Fair 2019



Michael Anderson turns Epoxy hybrid

You agree, year after year, to be a demonstrator at the New Mexico Expo, while watching adults and hundreds of school children be absolutely rapt at the process of making a top out of a little bit of wood and being thrilled at being given that very same top! Just seeing their eyes and their faces seeing that top emerge has warmed the cockles of many a heart! The State Fair is an opportunity that helps increase our visibility while having the potential to recruit interest and members for NMWT.

You participate in online workshops. You compose and share videos of your own works through social media. You act as a mentor to newly minted turners. You share your lathes and tools in order to teach. As a result of members' mentoring, at least two novice 'turners have become professionals and many more have polished skills and mentored others. As a result of our ability to reach out virtually, our membership has grown remarkably in the past few years and that can be attributed to the growing skill of our technical staff.

You use your technical expertise to make it possible to share meetings and demonstrations through the magic of the internet. You chase down cables and connectors and invent ways to place cameras so everyone can see clearly what is being turned on that lathe and how that tool does that. We now share our videos with turners who may not be able to attend meetings.

You support Beads of Courage by turning lidded boxes for the beads that children are given when undergoing chemotherapy at local hospitals – something that brightens the days of children who should never have even heard the word "cancer."



(Continued on next page)

Just Look What You've Done! (Cont'd)

by Sally Breeden



Our members have mentored veterans by offering free woodturning lessons to share that skill and inspire those vets who need a connection. Dovetail Community Workshop offers space and some equipment to allow mentoring to anyone who has interest but may not have the necessary equipment and NMWT members can utilize this space. My husband suffered for about 30 years with undiagnosed PTSD and signing him up for two lessons in 2010 with Ray Berry at Woodcrafters, woodturning probably saved his life. Truly.

As a service to family of woodturners who have passed, many of you offer to organize and carry out tool sales. Not only is this a priceless gift to the family but allows that member to share what he or she has acquired over the years in tools, equipment, and wood so that others can carry on this talent in the member's memory.

You share your skills and expertise through the Explora programs – summer camps, Science Fiestas, demonstrations, and public events benefitting both Explora and NMWT. Our members have worked with Explora staff to help with the design and fabrication of educational kits that support STEM education.



Creative Woodworking Camp at Explora



A chapter of Women in Turning (WiT) has been established and is connected to NMWT through our WiT member who continues to recruit women to this art and science.

Our newsletter has been awarded the AAW Best Newsletter Award for 2020 and is highly rated by AAW regularly. The newsletter is filled with information, links to resources, news of Chapter events and Chapter members, schedules of workshops, and photographs – in addition to be an eye-catching design. Our NMWT Website has won AAW's award two times.



You drive miles to see if that newly hewn blackberry root would be a tiny and beautiful jewelry box or to chase down a lead for salt cedar of a size that can be used. These greenwood gatherers then preserve and store the wood until it can be used by members.

As you see, New Mexico Woodturners has given much to this community and to our State. What you do as a 'turner offers a way to discover and encourage talent in those who may not even know they want to be woodturners. This only adds to the mystique of the "art scene" that is New Mexico. If you, as 'turners, did not exist, the Sunday edition of the *Albuquerque Journal* would be overrun with ceramics and acrylic paintings. I am not a 'turner but I am so proud and so happy to be involved in a small way with a group of such talented and wonderful humans.



“Woodturner in Progress”

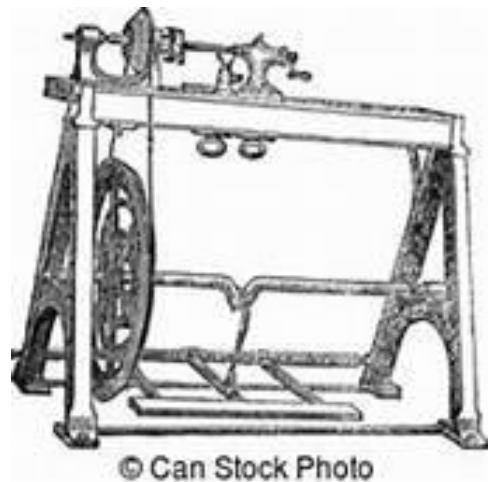
by Daniel Cross

I have been a “Woodturner in Progress” for about 6 years now. Early December 2021, I had some major thumb surgery to repair an arthritic condition in my dominant right hand. As planned, 6 weeks later, I had shoulder replacement surgery in my non-dominant arm. At this point, I am over 3 months removed from productivity in the shop.

Why do I regale you with this background information? Well, I have walked into my shop numerous times over this recovery, looked around and returned to the house...without turning on a machine! This inability to work, even in the short term, frankly sucks! But what it really does is remind me how much I cherish my hobby. While I have only been turning for a relatively brief period, I have been fortunate to have been a cabinet and furniture maker for almost 50 years ("I'm that old?").

As I reflect on this situation, I can truly say the 2 disciplines are quite different. I am proud of the furniture and cabinets and "stuff" I have built over many years, but somehow those things pale in comparison to my meager achievements on the wood lathe. Woodturning has become a more visceral experience for me, much more intense and immersive.

I guess because I have the time now and can't work, it has given me the time to try and crack the code on why woodturning means so much to me. At first, the lack of a defined finish line in turning kind of pissed me off...now I see that as a good thing. I've accepted the (hopefully) short term inability to be someone like a Tom Durgin or Michael Alguire...FOR NOW HA HA!!



The other huge part of woodturning for me is the ability to use so many different amazing types of wood. I can remember some bigger furniture or cabinet jobs that required a bunch of mesquite or walnut. That was fine, there was so much variety within those piles of boards. Now that pales in comparison to the awesome opportunities, for example, that presented themselves with the wood from what I call "the Tennessee haul". Finally in this regard, I am able to find a good quantity of oak and juniper around where I live that has produced some beautiful turnings on the lathe.

Lastly, I want to address the benefits of this outstanding woodturning club. I live in Arizona, but have always been welcomed by the members of this group. My skill level has been helped so much by joining NMWT. The zoom classes and available resources have been a real blessing. Finally, it is all about people in the end, and I am very thankful for the kindness and generosity of this "team of turners."

You are all the best!

Dan Cross

Stress in Wood

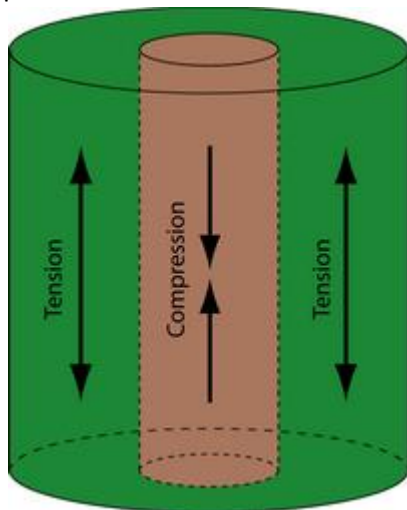
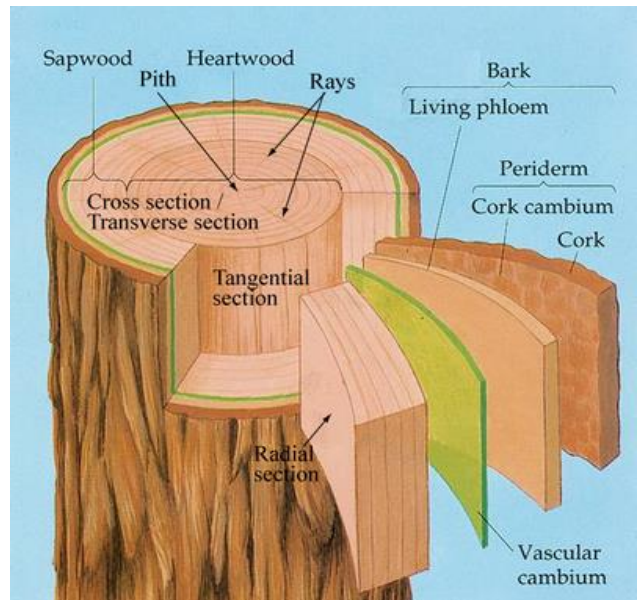
by Tom Durgin
What a Challenge!

I shaped and hollowed a piece of Albuquerque local Cottonwood to make a yarn bowl. All that went pretty well, some cracks, filled them with coffee and pressed on. Now for the painful part, cutting out that darn curly yarn hole. I was nearly there and that terrible sound, snap crackle and pop! Thankfully no damage and I finished the bowl.

So what happened? The stresses in the wood from years of growing, rain, snow, wind, drought and who knows what else released in that pop. I jumped when it popped although I wasn't surprised it happened. That's a common thing in wood we all work when we get locally in log form, the wood we get like this so much less stable than kiln dried wood.

We all know there is stress in the wood, we all know the wood moves and changes as it dries out or as a piece moves around the country to different climates, but where does all the stress come from? Let's take a moment and think about the log the wood came from, it is made up of 3 major areas, heartwood that provides some structure to keep the tree standing, sapwood that does a whole lot of the work transporting and storing water and other nutrients the tree needs and the bark layer to protect the whole system.

Besides ending up in our shop and fighting bugs all their life trees have other things to battle, around here wind is a constant battle. Lucky for the trees they are pre-stressed, the center in compression and the outside portions of the trunk in tension. This pre-stress helps the tree bend and resist the wind. What it doesn't do is help us when we try to process the wood for our creations.



Those cracks start and the checks begin as the wood dries out. Moisture escapes a log faster at the cut ends than through the sides. Lots of the wood you'll get from our green wood crew will be sealed on those ends in an attempt to even out drying. Removing the bark while sealing the ends offers even more even of a way to release moisture evenly.

The tree is pre-programmed to grow with stress, the growing, wind, leaning, trimming and other factors add more stress. We get a hold of a log and dry it out adding more stress. All of this stress adds up, it is there for us to deal with, for us to release with each cut, each pass with the gouge. Just know it's there and we are the ones who have to manage all that stress.

I got a whole lot of help from this site while writing this up:
<https://www.doitpoms.ac.uk/tlplib/wood/index.php>

Library Display Opportunity

Time to Showcase Your Work

New Mexico Woodturners has arranged with the **South Broadway Cultural Center's City of Albuquerque Library** for a display from **April 1 through 30**. There will be three display cases available and I encourage you to bring a piece - or several pieces - of your turnings for placement. This is a great opportunity to display the work of your lathe and increase awareness for our Chapter. I apologize for the short notice but call me, Sally Breeden at 505-352-0159, and confirm that you will bring some of your work, I will give you time, place, and all the pertinent info.

Photo Gallery

New Mexico Fair "Best in Show" and "Judge's Choice" Throwback

2022 NM State Fair is 6 months away! Are your pieces ready?



Scott Eckstein – Dragon - 2021 Best in Show



Scott Kershaw – 3 Wing Bowl – 2021 Best in Show



David Waldrep – Flame Box Elder Bowl – 2021 Best in Show



Brad Carvey – Irish Beech Bowl – 2021 Best in Show

*These photos can be found in the Galleries section on NMWT's webpage

Turnings shared via Kay Grant – Send gallery photos to gallery@nmwoodturners.org

Photo Gallery

New Mexico Fair “Best in Show” and “Judge’s Choice” Throwback

2022 NM State Fair is 6 months away! Are your pieces ready?



David Stein – Maple Bolt – 2021 Judge’s Choice



Turnings shared via Kay Grant – Send gallery photos to gallery@nmwoodturners.org

Photo Gallery



Joe Channey – Red Headed Stranger



Joe Channey – Happy Turquoise



Nancy Matteson – Hollow Pecan Branch



Tom Durgin – Cottonwood Yarn Bowl



Nancy Matteson – Arizona Ironwood Bowl with Weathered Interior



Nancy Matteson – Lace Oak Plate with Feather Pyrography Edge Detail

Turnings shared via Kay Grant – Send gallery photos to gallery@nmwoodturners.org

Marketplace



Mobile Base

Now 18"x24", but can easily be modified



8" Chinese Grinder

1 HP, 3450 Rpm

To A Good Home

Yours for any reasonable donation to NMWT

("Reasonable"= according to your needs and means.)
Call: Dave, 505-266-0356



Delta Dust Collector

650 CFM, 1 micron dust filter

Anchorseal (green wood sealer) - \$20/gal:

For sale to NMWT club members are one-gallon jugs of Anchorseal. These are available for pick up at Albuquerque Exotic Woods (AEW). Make check payable to NMWT and mail to club address OR drop check off at AEW.



Wood for Sale

Many species. Most 4/4, and some 8/4, and also a large quantity of boards 1/4"-3/8" thick; surfaced both sides. Jim will take offers at 20% to 50% of the best price you can find on the internet, depending on species. Please call Jim McLain at 575-517-6535 if you are interested in making a trip to Socorro for some great wood.

Species include: Blood wood, Spaulted maple, Spaulted hackberry, Brazilian walnut, Curly maple, Pomelle bubinga, Bubinga, Hondoras rosewood, Tulipwood, Black mesquite, Wenge, Gabon ebony, Cocobolo, Tea tree, Bocote, Arariba, Moradillo, Lacewood, Yellow heart, Padauk, King wood, Canary wood, Mahogany. See some of the wood pictured here.



Hollowing systems for sale

Contact Bob Rocheleau at (505)235-9002.
Vicmarc hollowing system for \$200,
pictured here:



See Next Page for More Ads

Marketplace

Rough-turned bowls for sale

David Hallman has hundreds of rough-turned bowls, in various woods, including cherry, china berry, walnut, sycamore, mimosa, sassafras, and mesquite. Some are natural edge (with and without bark), others are cut edge. Sizes range from four inches up to fifteen inches wide, shallow up to six inches tall. Asking one dollar up to twenty five dollars for the larger sizes. Volume discounts. Located in Silver City.

Contact David at (575)654-0299
or mesquitedave@gmail.com



Bridge for Sale



This is a sample marketplace posting.

We welcome members to use this space for anything related to woodturning.

There is no charge for listing an item. Ads will run for about one month.

To request a listing, send item and contact info to sale@nmwoodturners.org

Your ad will be reviewed and posted as quickly as possible.

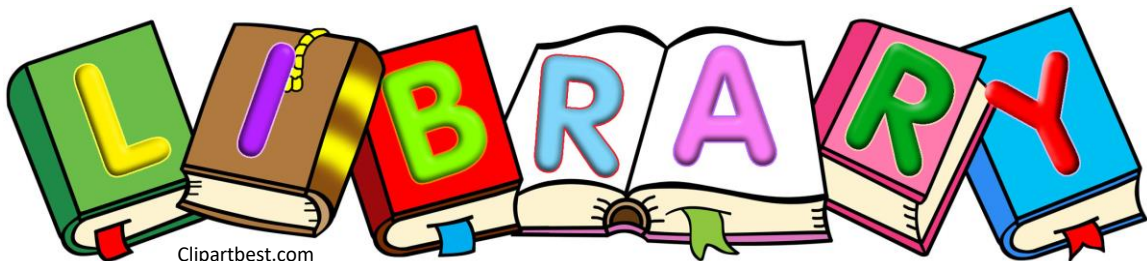
*** You must be an NMWT member to post ads ***

NMWT Library

Did you know we have a Library?

DVD Rental: A good selection of educational DVDs are available for check out during club meetings.

Please use and return DVD's in one month if possible and donate \$1.00 for each DVD checked out to help with expenses. If you encounter any problems with DVD's, please notify Michael Andersen of those problems.



2022 Elected Officers, Directors & Committee Chairs

President:	Don Roden	763-234-5780	Newsletter Designer:	Traci Durgin	news@nmwoodturners.org
Vice President:	Tom Durgin	505-688-1370	Newsletter Editor:	HELP NEEDED	
Treasurer:	Woody Stone	828-808-7876	Photographer(s):	Bert & Kay Grant	661-599-0116
Secretary:	Sally Breeden	505-352-0159	Raffle Coordinator:	Dean Cross	575-644-8945
State Fair:	Bill Mantelli	505-400-0266	Librarian:	Michael Andersen	575-209-0172
Membership:	Tom McLarty	505-298-3790	Equip/Workshops:	Scott Eckstein	505-270-0516
Webmaster:	Dave Stein	505-266-0356	Green Wood-ABQ:	HELP NEEDED	
Lead Video:	Derek Roff	505-438-1820	Green Wood Help:	HELP NEEDED	
Email Administrator:	Hy Tran	505-459-8132	Special Workshops:	John Ellis	505-463-7750
Member-at-Large:	Ron Bahm	505-881-8845	Past President:	Rick Judd	612-280-8300

Need a Mentor?

Free to NMWT members: give a Mentor a call!

Name	Phone	Description
Bill Zerby Rio Rancho - NM 528 & Southern	505-263-6632	Basic spindle turning & tool sharpening
Don Roden Albuquerque – Dovetail Workshop	763-234-5780	Basics of spindles, bowls and the skew chisel
Hy Tran Albuquerque - Paseo & Ventura	505-459-8132	Beginner and novice woodturning
John Ellis Placitas	505-463-7750	Basic turning, plates, tools & handles
Larry Linford Albuquerque	505-870-1601	Basket illusion turning and embellishment
Rick Judd East Mountain	615-280-8300	Hollow forms, bowls, lidded boxes, burls, natural edge
Ron Bahm Albuquerque - NE Heights	505-881-8845	Pen turning and segmented work
Ron Phillips Rio Rancho - Rivers Edge II	505-553-6139	Beginning, basic and intermediate turning. Also, specialty tools, rests & steadies

Members are always welcome to contact the people on the mentor list for guidance to better turning ideas and techniques

*****SEEKING MENTORS*****

Membership Renewal – Now Online!

Membership Dues: Membership dues renewals are due on or before the last day of the month in which the member's current membership term expires. Members who do not renew within thirty (30) days after their membership expiration date will no longer have access to member privileges and will no longer receive the monthly newsletter. Annual dues are as follows:

- **One year: \$25 for an individual; \$30 for a family**
- **Two Years: \$45 for an individual; \$55 for a family**
- **Three Years: \$65 for an individual; \$80 for a family**
- **Lifetime: \$300 for an individual; \$350 for a family**

Additional Fees:

- An individual member who subsequently adds family members will pay the difference between the individual dues and the family dues rate for the remainder of that membership year (i.e., a one-year individual member adding family members would pay an additional \$5.00 dues for the remainder of the membership year).
- A member requiring a mailed copy of the monthly newsletter will pay an additional \$10 per year to cover cost of mailing.

[Web-Based Credit Card Dues Payment Now Available](#)

Renew Online

We are very pleased to announce that you can now pay your membership dues with a credit card on the NMWT website at <https://www.nmwoodturners.org/>. To access online dues payment, simply go to the new "Membership" tab near the top of the homepage and select "Pay Online" from the drop-down menu. This will take you to a secure website managed by Converge, our credit card service provider. There you will find a series of "Buy Buttons" that are clearly labeled with each membership dues option (i.e. 1 Yr Individual Membership \$25, 2 Yr Family Membership \$55, etc.) Simply select the dues option that you want and then hit the "Checkout" button.

You will need to fill in all of the contact information on the payment processing page so that the Treasurer can confirm that our membership records are up to date and also so that he can send your new membership card by regular mail. Also, due to some reporting limitations of the Converge website, you will need to once again select the dues option you want from the drop-down menu labeled "Items Purchased". Fill in your credit card information and hit the "Submit Payment" button to complete the transaction. You should receive an "Order Confirmation" with full details of your purchase by e-mail, and the Treasurer with mail your membership card to you. That's all there is to it!

Renew by Mail

You can, of course, still mail a check along with current contact and e-mail information to our Treasurer, Woody Stone, at 2 Blue Corn Ct. Sandia Park, NM 87047. The easy way to do that is to go to that same new "Membership" tab on the NMWT homepage and select "Membership Form" from the drop-down menu.

Fill in the form (PLEASE PRINT CLEARLY) and mail it to Woody with your check. Should you have any issues or questions regarding the new Credit Card payment system or if you are not sure if your membership expires at the end of 2020, feel free to call Tom at 828-808-7876 or e-mail him at eesphoto492@gmail.com.

Want a quick jump to our website, scan here!



How to Contribute to High Desert Turning

The NMWT's newsletter editor has submitted High Desert Turning to the AAW's 2020 and 2021 Best Chapter Newsletter Contest. Unfortunately for the NMWT, High Desert Turning has not been selected in the top 3 chapters either year. However, the NMWT chapter website won 1st prize in 2020 for the Best Chapter Website Contest. So, we know it's possible to rank highly among the numerous chapters of the AAW. Much of the website content can be found in High Desert Turning.

So, now you ask, "What is in it for me?" Well, we will get to that. But first, our ask is this:

Submit a short snippet, article or outline of a shop tip or trick you use. You'll be surprised by how many folks will benefit from your personal idea or solution. Take 2, 3, 4 or 5 photos of your process, pieces or how your tip or trick comes together to illustrate how the membership can implement your idea in their shop. If appropriate, share credit where credit is due should you have benefited from a social media post, YouTube video or viewing an in-person demonstration.

Please consider contributing to the NMWT newsletter High Desert Turning! No tip too elementary and no trick too simple will go unpublished. We can all learn and gain confidence from others! Send your contribution to news@nmwoodturners.org

Here's what's in it for you:

You are inspiring dozens upon dozens of other turners implement shop solutions that ease their way and improve their flow and turning. You have ideas and solutions that many folks likely envy and would benefit from knowing. There's gratification in uplifting fellow turners.

The club has a large tote of exotic, seasoned and figured timber that was acquired during lockdown and you will be free to select a piece of your choice for every published tip or trick. The tote has wonderful turning stock and you can rifle through it for your choice.

We will include a NMWT club sticker with your selected piece of timber.

NMWT's Logo Apparel

NMWT Cap, Shirts & Smock

Caps (Baseball)	\$15
Long Sleeve Denim Shirt	\$30
Short Sleeve Denim Shirt	\$30
Short Sleeve Snap Shirt	\$30
Polo (golf) Shirt w/pocket	\$30
T-Shirt V-Neck	\$20
Smocks	\$50

Items include embroidered NMWT logo

Names embroidered on shirts are additional \$5.00
 Sizes XXL, 3XL, 4XL and up are an additional \$3.00
 Contact: Don Roden at 763-234-5780

Order Form on Next Page

Get order forms at club meetings from Ivan Blomgren or download from the website and turn in the completed order form(s) to Ivan with payment. *Orders are submitted on a quarterly basis and can be placed with Ivan up through the middle meeting of each quarter.*

Full payment for an order will need to be submitted with each order form before it can be processed! Order placement cut off dates for each quarter will be as follows:

Quarter	Months	Order Meeting	Delivery Meeting
1st	Jan-Mar	Feb	Mar
2nd	Apr-Jun	May	Jun
3rd	Jul-Sept	Aug	Sept
4th	Oct-Dec	Nov	Dec



NMWT's Logo Apparel

NMWT SHIRT/CAP ORDER FORM

NAME _____ DATE _____

ADDRESS _____

TELEPHONE _____

Caps with Logo BX005: Color: (Dark Green, Red, Navy, Stone)

(Embroidery on Navy caps will be silver in place of black)

No. of caps @\$15 each _____ \$ _____

Long Sleeve Denim Shirt with Logo: Color: (Dark Denim, Light Denim, Washed Black)

Men M550 - Sizes: (S, M, L, XL), (2XL - 4XL add \$3)

M550T (Tall add \$6 each [in Men's size only])

Ladies M550W - Sizes: (S, M, L, XL), (2XL - 4XL add \$3)

No. of shirts @\$30 each _____ \$ _____

Short Sleeve Denim Shirt with Logo: Color: (Dark Denim, Light Denim, Washed Black)

Men M550S - Size: (S, M, L, XL), (2XL - 4XL add \$3)

No. of shirts @\$30 each _____ \$ _____

Short Sleeve Key West Performance Staff Shirt with Logo (Two Pockets):

Color: (White, Cloud Blue, Green Mist, Khaki, Navy)

Men M580 - Size: (S, M, L, XL), (2XL - 4XL add \$3)

Ladies M580W - Size: (S, M, L, XL), (2XL - 4XL add \$3)

No. of shirts @\$40 each _____ \$ _____

Polo Shirts w/ Pocket with Logo: Color: (White, Black, Forest, Campus Gold, Light Blue, Burgundy, Classic Navy, Classic Red, Electric Blue, Platinum)

Men 88181P - Size: (S, M, L, XL), (2XL - 4XL add \$3)

Ladies 78181P - Size: (S, M, L, XL), (2XL - 4XL add \$3)

No. of shirts @\$30 each _____ \$ _____

T-Shirts V-Neck with Logo: Color: (White, Black, Turquoise, Ocean Blue, Maroon, Navy, Red, True Royal, Silver)

Men 3005 - Size: (S, M, L, XL), (2XL - 4XL add \$3)

Ladies B6005 - Size: (S, M, L, XL), (2XL - 4XL add \$3)

No. of shirts @ \$20 _____ \$ _____

Name on garment is \$5 (no names on caps) X _____


Name _____ \$ _____

Extra Logo (AWA) \$5 X _____ \$ _____

Total _____ \$ _____

Rev.: 11/07/2020

Discount & Rebate Partners

ALBUQUERQUE
Exotic

Woods
www.albuquerqueexoticwoods.com
(505) 299-6945

NMWT members can get a 10% discount upon presenting a current membership card. Military and first responders also get a 10% discount.

RUGBY[®]
Architectural Building Products
(505) 924-2270

NMWT members receive Wholesale Prices.
Rugby's has hardwoods, Thermofused Melamine, plywood, veneers, and furniture grade pine.



CRAFT SUPPLIES USA THE WOODTURNERS CATALOG

www.woodturnerscatalog.com

CSUSA offers a discount to members on large orders and has a club support program. Visit the web site or phone Kathy Lawrence at 1-800-551-8876

Penn State Industries

www.pennstateind.com

Register as a member of New Mexico Woodturner at Penn State Industries and automatically get 10% off (in addition to most other promos) your entire order !!! Yes! In effect, you will be doubling dipping on the discounts!!!

Register by sending an email to hy.d.tran@gmail.com with the name, address and email to which your Penn State catalogs are sent. Once you're registered, you'll automatically get 10% off every time you shop online (not applicable to phone or mail orders).



DENDROTECHNOLOGY TIN SHED MILLWORKS

(505) 980-6161 www.dendrotsm.com

LIVE EDGE SLABS, TURNING BLANKS, CUSTOM MILLING

We offer 10% off our listed prices to members and give a free item from our oddments box or a turning blank to first time member customers.



**8100-M4 Wyoming Blvd. NE, #188
Albuquerque, NM 87113**
