



High Desert Turning

You're gonna love the way you turn.
You can do this. We guarantee it!



Membership details found within www.nmwoodturners.org

NMWT's Upcoming Monthly Meeting

Club Meetings are generally held 10:00 am to 12:30 pm on the first Saturday of the month



Who: Scott Kershaw

Topic: Butterfly Patches, Splines or Stitches

When: Apr 6th @ 10:00 am MT

(In-person and online demo – Zoom session opens at 9:30 am)

Where: North Domingo Baca Multigenerational Center
7521 Carmel NE Albuquerque, NM 87113

Please see next page for more information regarding guest speaker(s)

President's Turn

A u t h o r : T o m D u r g i n

Fellow Turners,

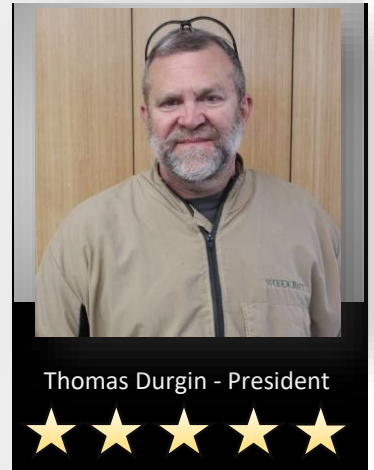
Wow is there a lot going on! We've got a library display coming in July, we've got a Sunport display coming this fall and we've got a turning foundations class coming soon. You'll soon see emails and hear about the woodturning foundations class. Are you new to turning, do your basic skills need a boost? This class is just for you!

The weather for the most part has warmed right up, time to be turning for you and me. Speaking of turning, have you made a Beads of Courage box yet this year? Time to get busy, we've got the beads and a trailer full of wood at this next meeting. Do something good for those kids, put a little love and sunshine in their life.

Get ready for a great demo. Do you have cracks in your wood, a break maybe? Scott Kershaw is going to show us how to fix those right up and make them look good. Don't miss out.

Tom Durgin

NMWT President



Thomas Durgin - President

NMWT's Upcoming Monthly Meeting



A u t h o r : S c o t t K e r s h a w

Breaches and breaks in your bowls? Cracks in your creations? Gaps got your grain grumpy? Voids in your valuable vessels? Come to April's New Mexico Woodturners demonstrations to see two ways you can repair, revive, remedy or refresh those turnings that have problems. Scott Kershaw will demonstrate how he adds butterfly patches, sometimes called bowties, dutchmans or pewa as well as splines or stitches, to his turnings to enhance defects, repair issues and potentially stabilize the dynamic timber we love to turn that loves to move on us. Scott will show how he starts the second phase of a twice turned bowl or platter. He will then discuss and demonstrate the addition of these features to the piece(s) he shows. We will discuss safety issues when turning material with defects. We will also see how he uses some common woodworking, DIY and crafting tools not often used at the lathe to enhance the turnings. Photos similar to what will be reviewed are courtesy of Mark Stebbins of Hawaii, Jerry Kermode of California and Pat Scott of Colorado - all spectacular influences on Scott's approach to these turnings.



Future Programs/Activities

May 4th	TBD	TBD
Jun 1st	TBD	TBD
Jul 6th	TBD	TBD

NMWT Includes Everyone!

New Mexico Woodturners (NMWT) welcomes everyone from all walks of life. Our mission is to making people more aware of this important craft and art form, to teaching our craft and to including anyone and everyone in our group.

So that we can make sure everyone feels welcome, the NMWT has worked hard to so that our governance documents remain reflective of best practices, desires of our members and to continue welcoming everyone with an interest in woodturning.

As we have gone through our Bylaws, Policies and other documents we have worked to remove gender specific language. Rest assured that the NMWT board will continue this process as these documents come up for review or revision.

NMWT Monthly Board Meeting

Open to all Members

When: Apr 24th, 2024 @ 7:30 pm

Contact info@nmwoodturners.org or any board member for more info or the Zoom link

Reflections from Last Month



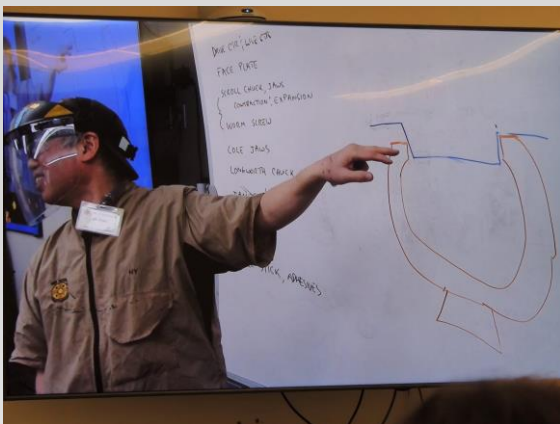
H o l d i n g Y o u r W o r k

A u t h o r : H y T r a n

There are various ways of holding your work on the lathe. Your lathe came with a drive center (goes into the headstock), a live center (goes into the tailstock), and a faceplate.

You want the drive center's driving points (whether it's a safety center, a spur center, or a steb center) to go into flat wood. Similarly, it's important for the faceplate to be mounted on flat wood. When mounting a faceplate, drywall screws are unsafe! Sheet metal screws are best. You should check if your faceplate screw holes are relieved (so the wood doesn't push the faceplate away as you put the screw into the wood). If they are not, chamfer the screw holes a tiny bit. There's a powerpoint in the club website that goes more into screws for faceplates.

Few people in the club use paper joints, but paper joints are a useful tool if you want to take your turning apart! A paper joint is a glue joint that has a piece of kraft paper (shopping bag paper) between two pieces of wood. Glue face grain to face grain using wood glue (like Titebond), but put a piece of paper between the joint. You can clamp on the lathe, or use regular clamps. After the glue sets, you can turn the wood, and you can then split the joint after turning. The paper will break—not the wood! Michael Mocho provided a few photos of some architectural turnings that he made using paper joints:



Event



A B Q F i b e r A r t s F i e s t a

A u t h o r : B i l l M a n t e l l i

Albuquerque Fiber Arts Fiesta 2024

The New Mexico WoodTurners are going to participate in the Albuquerque Fiber Arts Fiesta and we need to fill one State Fair size glass display case with our fantastic turnings. The Fiesta will be held in the Manual Lujan Building on the Expo NM grounds on Friday and Saturday April 12 and 13. We have an allotted time slot to set up our display starting at 11:00am on Thursday April 11. Since we have a limited amount of space, I need your information in advance of the setup date either by phone or at the April 6 meeting. When you commit to participate, I will relay more specific information. It would be great if we had a Beads of Courage Bowl or two to display.

Thanks,

Bill Mantelli 505-400-0266

1. Scott Eckstein

Dragon

Mulberry

2. Ron Bahm

Pens for the Troops

Various Woods

3.

4.

5.

6.

7.

8.

9.

10.

11.

12.

13.

14.

15.

16.

Event



A B Q F i b e r A r t s F i e s t a

A u t h o r : B i l l M a n t e l l i

Albuquerque Fiber Arts Fiesta 2024

The New Mexico WoodTurners are going to participate in the Albuquerque Fiber Arts Fiesta (yes wood is a fibrous material). The Fiesta will be held in the Manual Lujan building on the Expo NM grounds. It will happen on Friday and Saturday April 12 and 13. In our booth we will have one of our new Laguna lathes, a video monitor and a display case filled with your turnings (no tuning). We need eight volunteers to man our booth. Volunteers duties are to feed the DVD player, pass out brochures and speak highly of our organization.

WE NEED VOLUNTEERS

Friday April 12

9:00am – 1:30pm	Bill Mantelli	
1:30pm – 5:00pm		

Saturday April 13

9:00am – 1:30pm		
1:30pm – 5:00pm		

Please call me to volunteer.

Thanks,

Bill Mantelli 505-400-0266

Event

A u t h o r : D o n R o d e n

Veterans Day in the Shop

Attention all military veterans. Please mark your calendar for April 14th, noon to 4 pm or whenever we finish. We have 17 Flag Cases in the final stages of completion and will start making more. When these flag cases are finished, they will be delivered to Santa Fe National Cemetery and given to families of veterans after they receive the flag. Please join fellow veterans in making these flag cases to honor our brothers and sisters who have passed.

Contact Don Roden or Dovetail Community Workshop and let us know you are coming for planning purposes.



I would like to see many of you there.



Silent Auction

C o n t a c t : N M W T T r e a s u r e r

We love to have nifty items or pieces of timber that can be auctioned at our next meeting to support the Scholarship Fund.

Potential ideas include rough turned bowls, gouges gathering dust, seasoned blanks or turning accessories.

Your contributions go to benefit the **Red Hollenbach Scholarship Fund** which is used to reduce the cost for members to attend professional demonstrator's hands-on sessions.



If you are seeking an handcrafted donation for your charitable organization, please email a request to: info@nmwoodturners.org

NMWT on Social Media



The New Mexico Woodturners are on Facebook and YouTube



Facebook is just one way to share your work. However, it's also a great platform to ask questions, request constructive criticism and rub shoulders with other turners.

Various members of the NMWTs moderate the social media accounts and promote the craft and our club actively on these outlets.

A number of the Facebook group members are not NMWT members and that's okay! However, by our NMWT membership being active on social media we can also share the benefits of club membership, promote club activities and foster relationships with turners around the globe.

Please join the Facebook group, subscribe to the YouTube channel and watch us grow turning!

Newsletter Submission

Got a great idea, tip, or trick that you'd like to share?

We'd like to read about it.

What do you need to do?

Write up a description, brief or in-depth, and include a few photos if possible to better detail your idea.

If you like or use a certain webpage or a YouTube channel, please write about and site your source.

Please send articles to news@nmwoodturners.org

Disclaimer: Articles submitted aren't guaranteed a spot in the next issue, but they will be published if educational criteria is met and as it fits organizational needs.



Newsletter
Submission

Deadline

A

p

r

22nd

Green Wood

The Green Wood Committee is always on the hunt for greenwood, and we all can agree, woodturners hate to see any good pieces go to a landfill. If you have some greenwood to share, please contact either chair member below for coordination. Our members love greenwood and there are endless possibilities and projects that can be done with it.



Green Wood Chairs

Joe "Stretch" Cole

480-216-3580

jt.cole@hotmail.com

Help Needed

Beads of Courage – NMWT’s 2024 Challenge

Our Challenge and Goal: **For each club member to take the time and heart to make at least one Beads of Courage Box during 2023**

What is Beads of Courage?

Beads of Courage (BOC) is the NMWT’s Community Service Project. Beads of Courage, Inc. is a 501 (c) (3) tax exempt organization working in partnership with the American Association of Woodturners (AAW).

[Official Guide to Beads of Courage – Woodturners Wanted](#)

This is Local!

Our Beads of Courage Bowls are taken directly to UNMH Children’s Cancer Facility here in Albuquerque for local patients. However, some bowls can also be sent to a National collection point in Tucson, Arizona.

UNMH Children’s Cancer Facility has been treating nearly one hundred seriously ill cancer youngsters each year. For each medical treatment a child receives, he or she gets a bead which they can then keep in their bowl, hence Beads of Courage Bowls. The children do receive a bag to put their beads in, but a Beads of Courage Bowl is far more special and reflective of the hard work to beat cancer!

NMWT currently produces approximately 8 bowls a year and it would be great to see that number increase exponentially.

For more information regarding the program, where to purchase beads, or where to deliver your finely crafted bowl, please see:



BOC Website



BOC Chair / Contacts

Scott Eckstein (NMWT BOC Contact)

505-270-0516

seemee911@gmail.com

Brianna Hayes (UNM Certified Life Specialist)

505-991-8501

bnhayes@salud.unm.edu

Abby Walker (UNM Certified Life Specialist)

505-991-8501

abcWalker@salud.unm.edu

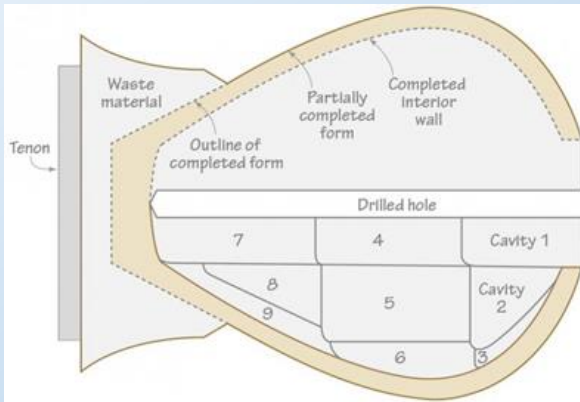


Women in Turning

B y : P a t r i c i a A p t

Turning miniatures isn't just fun it's a good way to practice creating pleasing shapes without too big an investment in time and wood. It's also a good way to use up small scraps of exotic wood that are just to pretty to throw away.

I'm often asked how I turn my miniature hollow forms. I turn them basically using the same techniques I use for full size pieces. Put a wood blank between centers, in my case a very small wood blank, and turn a tenon, in my case one that will fit in spigot jaws. Then with the blank mounted in the chuck I turn the outside first, careful to leave enough mass on the bottom portion to support the remainder of my work. Then I move to the inside hollowing the way you would with a full size form. Drill a hole to depth and remove the material working from top to bottom.



Hollow starting with cavity 1 working down to 7, 8, and 9.

(Continued on the next page)

What we offer is access to the AAW site and wonderful monthly magazine, and a group of engaged and enthused turners!

Join the private

[Facebook](#) group page [Women in Turning](#) to get ideas & support. AAW membership is not required.

Women in Turning (WiT) -- The

AAW strives to deliver the publications and services that our members need to grow, connect, explore, and thrive in the areas of woodturning that are important to them.

[Guest Membership](#)

ALSO – join the AAW with a guest membership so you can see what else WiT and AAW

By signing up for a complimentary Guest membership, you can have access to AAW resources for a full 60 days. You will be able to explore what the AAW has to offer, kick our tires, and hopefully decide to become a full-fledged, paid AAW member to benefit from everything the AAW has to offer.



L o c a l W i T C o n t a c t s

Patricia Apt (NMWT's WiT Liaison)	505-401-4442	papt625@gmail.com
Nancy Matteson	801-694-6866	namatteson@hotmail.com
Kay Grant	661-599-1832	wykayg@gmail.com
Erin Perry O'Donnell	505-926-1693	erin@dovetailworkshop.com

Women in Turning

B y : P a t r i c i a A p t



Typical "swan neck" hollowing tool for full size forms

The opening on some of my miniatures are as small as 6 or 7 mm, so I had to make my own tools to access the inside. Al Mirman was my woodturning teacher at Santa Fe Community College many years ago, and he showed our class how to make a small hollowing tool out of an allen wrench. Since then, I've made several in varying sizes.



Miniature tools made from allen wrenches.

At our next WIT meeting on April 21st I will be demonstrating the method I learned from Al for making a miniature hollowing tool. This will include making the tool handle. Hopefully we'll be able to produce one or two tools.

The local WIT (Women in Turning) chapter will be meeting Sunday, April 21st, at Dovetail Community Workshop at 1:00 pm. All NMWT members are welcome at our meetings.



Women in Turning

Try out an American Association of Woodturners (AAW) membership for 3 months!!

We know you will be hooked!

AAW Membership Application

WIT (Women in Turning) is "dedicated to encouraging and assisting women in their pursuit of turning, sharing ideas and processes to further member's skills and creativity, and increasing participation of women in the field of woodturning."

The AAW WIT Committee agrees that to further this mission, we can work with chapters to help grow the number of women in AAW. Currently, women comprise less the 9% of AAW membership.

To encourage women to join AAW, the WIT Committee offers a limited number of WIT sponsored half price AAW memberships to women for a one-year, full "General" AAW membership.

Eligibility To be eligible, a grant recipient must be a woman and who has never previously been a member of AAW.

Process Only the chapter AAW WIT Liaison, Patricia Apt, chapter president or vice-president may request the grant. After we've received the application, the recipient will be sent a promotional code with instructions on how to use the code in applying for an AAW membership. If you have questions, please email wit@woodturner.org.

Limitations

If the nominee is a new member of a local chapter (within the last two months), WIT will pay 100% of the AAW membership.

If the nominee has been a member of a local chapter for more than two months, WIT will pay 50% of the AAW membership.

If the nominee is not a member of a local chapter, WIT will pay 50% of the AAW membership.

Grants are currently limited to no more than two women, per chapter, per quarter.

Quarters end January 31, April 30, July 31, and October 31. Based on the number of requests, this limitation may change.

We hope that this offer will be an incentive for new women woodturners to join your chapter.

[Click Here for AAW Specials for WIT](#)



Article



S e c r e t a r y S t o r y

A u t h o r : S a l l y B r e e d e n

Message from Board Secretary

As our Chapter continues to grow and as we work to engage the next generation, including those “stealth” woodturners we continue to discover, it becomes more and more clear that it is necessary that YOU become involved in the support system that keeps this Chapter such an important element in today’s complicated life. None of your Board members consider this a burden, but rather an important facet of their lives. Some of the Board members are still employed and consider this extra activity a necessary and rewarding part of their busy lives. If you are retired, it’s likely that you might have some time to become involved.

So much goes on between meetings that are intended to address the Chapter’s mission statement and advocate for our goal of education. It has become routine of emails flying back and forth, texting to get small details or to plan or confirm, communication between Board members who have committed to projects on behalf of the membership. There are a multitude of details to be worked out – obtaining donated wood for the members, taking equipment to different display or workshop locations, the maintenance of the equipment and confirming safety of use, banking details and reports, and the planning of professional demonstrations with the myriad of details those events involve. These are background things that you don’t see – all for the continued education and enjoyment of the members.

Please don’t read that paragraph and decide, “I don’t have time for that!”, particularly if you have left the workaday world and now enjoy a bit of freedom. You know that woodturning is such a rewarding and enjoyable craft that gives you time to design, reflect, and create beautiful works of art and function – sharing some of your time to help others feel that same sense of accomplishment and the “mental vacation” serves that purpose, too. Although the list I’ve offered may seem a bit much, the time from your day helping the other members is less than it may appear.

New Mexico Woodturners is a worthy, important outlet for those who create and for those who enjoy the product you produce. Please get involved in some way and help all of us because the Chapter depends on its members to keep it alive – and that means YOU.

Beginner's Turn



Woodturning and 3D Printing

A u t h o r : S t e v e J o h n s o n



3D Printing has been around since about 2005 for hobbyists and small businesses. The type of printing I am referring to is called FDM (Fused Deposition Modeling) printing where one takes plastic filament that is 1.75mm in diameter and fuses it with heat to make items. I looked at this technology about 2 years ago and at the time found the technology to be too fiddly, complex, and not very reliable. The people interested in it were the type that were and are totally interested in building the printer from scratch and fiddling with it to make it work better. Fast forward to today and in the last year or so, there are a couple of companies (Creality and Bambu Labs) that have introduced printers that are not only affordable but can be used right away, out of the box with no fiddling or upgrades to get them to just print things.

What is the interest for woodturners? Well, have you ever been in the middle of a project and thought that “if I just had this jig or part, I could do a better job”? Some things just can’t be turned easily on a lathe and therefore the conundrum. A perfect example is a 4 inch cone mounted on a $\frac{3}{4}$ by 10tpi live center (Oneway, Robust, Jet). It turns out that the YouTube Channel, ThePapa1947, who has been turning for many years, obtained a 3D printer and made one. I suggest for those interested, to look up Papa and view his videos on the subject. One can make everything from organizing bins (I made an entire kitchen drawer set and it worked great), special little items for the lathe/shop, toys, and items to fix tools and household items. There are several different types of filament (the plastic filament that comes on 1kg reels) depending on the application, different colors, and amazingly enough, there is even a wood filament

(Continued on the next page)

And don't forget: Have fun with your lathe!!

Beginner's Turn



Woodturning and 3D Printing

A u t h o r : S t e v e J o h n s o n



So what is catch you might ask. Well, this is an entirely new technology for most woodturning types, unless of course, you are a retired machinist and mechanical designer who has been using 3D CAD (Computer Aided Design) programs for years. 3D printers are computer driven, one could say that a 3D FDM printer is basically a computer controlled hot glue gun. One must get familiar with what these printers will do, what kind of project you have in mind, and 3 different sets of software to learn something about. From the bottom of the stack, the firmware/software on the printer itself. Second, something called a slicer program to tell the printer what to print and convert what you tell it from the CAD program into machine language that drives the stepper motors and heaters on the printer. And finally a CAD

program to actually design what is in your mind into something that can be sent to the slicer program. Now there are literally hundreds of thousands of items that have been pre-designed and all you have to do is download them onto your computer from the internet, but not a lot of them pertain to woodturning.

In order to really release the power of this technology, you wind up designing things in a CAD program, download the design into the slicer software, load the sliced file into the printer and watch the printer magic. Test and adjust until you get it the way you originally perceived it. And Voila!! You just created something that didn't exist before and there is nothing else on the planet that can match it!! I have run about 50 different designs so far, ten of which are my own creation from scratch using two different CAD programs to do a custom design.

3D printers are kind of like woodturning and lathes. At first, everyone obsesses over the lathe and forgets all about all the other stuff you have to purchase/obtain in order to

(Continued on the next page)

And don't forget: Have fun with your lathe!!

Beginner's Turn**Woodturning and 3D Printing****A u t h o r : S t e v e J o h n s o n**

really get serious. A good starting printer like I have costs just under \$300 and I have about \$100 in accessories. The printers themselves can run anywhere from my sub \$300 to around \$1500 for a four color superfast whiz bang outfit. And of course, commercial printers will run many thousands. I have gone through 4 rolls of filament at \$22 a roll. So that is about \$500 and counting to print what I have done so far. Filament can run anywhere from nine dollars a reel to 50 bucks a reel depending on the type and quality of filament and the manufacturer. There are always accessories that are needed but what craft doesn't have that!!

So, if you have ever had the yearning for making your own custom parts out of plastic or nylon or carbon fiber, I would suggest you look into this technology. Once you get the hang of it, and go through a couple of prints end to end, the process speeds up and you can create some truly wonderful and unique items in a reasonable timeframe. Just type "3D Printing" into Google or YouTube and go from there.

Any questions, contact me at ssjnm@gmail.com.

And don't forget: Have fun with your lathe!!

Photo Gallery



Instant



Kay Grant Maple Platter
Underside



Kay Grant Maple Platter



Woody Stone Off Center
Bowl Walnut



Tom Durgin Maple Spurtle
Cherry Spatulas

Please send gallery photos by the 3rd Saturday of the month to
gallery@nmwoodturners.org

Photo Gallery



Instant



David Croxton Pen Alligator
Juniper Burl



Scott Eckstein Pine Novelty Bowl



Scott Eckstein Lacewood
Twisted Vases



Bill Gorman 3 Sided Box

Please send gallery photos by the 3rd Saturday of the month to gallery@nmwoodturners.org

Photo Gallery



Instant



Bill Gorman Cherry Off-Center Box Epoxy with Mica Inlay



Pat Beatty Elm Coin Box



Pat Beatty Coin Box Elm

Please send gallery photos by the 3rd Saturday of the month to gallery@nmwoodturners.org

Photo Gallery



Instant



Patricia Apt Mini Seed Pot



Chris Enke Baltic Birch Plywood Pieces



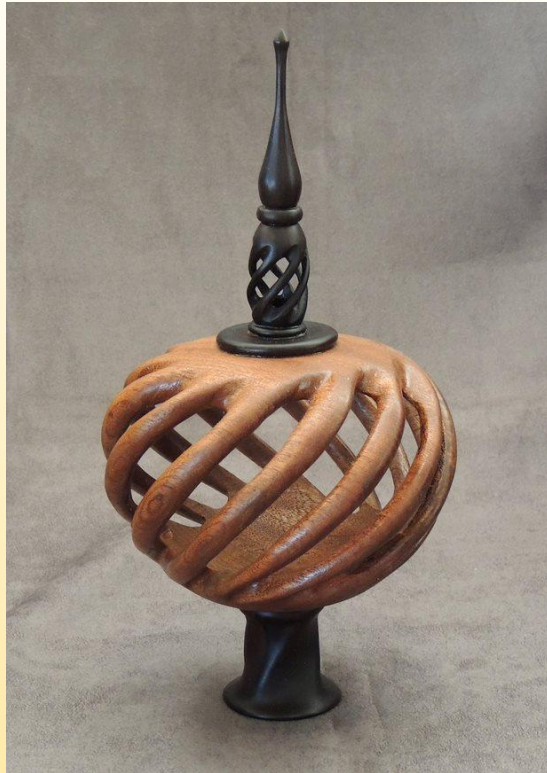
Patricia Apt Wormy Figured Maple Mini-Seed Pot

Please send gallery photos by the 3rd Saturday of the month to gallery@nmwoodturners.org

Photo Gallery



Instant



**Rex Funk Spiral Hollowform
Triple Twist**



**Pat Beatty Pine Hotplate Slate
Insert**

Please send gallery photos by the 3rd Saturday of the month to gallery@nmwoodturners.org

Marketplace



Are your hands itching to grab that woodturning chisel once your shop is above freezing but there is no wood to be found? Have I got a deal for you! April 6th I will have a trailer load of new wood of all flavors- cherry, mulberry, ash, cottonwood, Osage orange, pinion, and more. The trailer will be in the north parking lot. Check out the photos below. I'll see you April 6th.



See our Marketplace section on our website for better photos

Please notify sale@nmwoodturners.org once item has sold

Marketplace



Attached are 3 photos of an End Vise I have FOR SALE. The description of the vise is on a photo. This Vise has never been out of the box and is listed at \$170.00 from Woodriver. I am asking \$85.00 (50%) for it. Rocky 505-235-9002

Title of Your Ad Here

Description of your Ad



Contact info for your Ad

Item #1:

Baxter Thread Master made and sold by 'Best Wood Tools' at <https://bestwoodtools.store.turbify.net/bathma.html>. This is possibly the finest threading system for wood lathes. I purchased with grand plans a few years back, but have yet to use it, so it's gotta go. Here's a review of the system <https://sep.turbifycdn.com/ty/cdn/bestwoodtools/BTM-REVIEW.pdf>. Has the 16 pitch head and includes the auxiliary slide. This is for lathes with a swing between 25"-28" but you can purchase a base from them to fit your lathe. Sells for \$900 new plus shipping. Selling for ~~\$675 or best offer.~~ \$595 obo.



Item #2:

Bowl coring system Bowlsaver Max 3 by Woodcut with Max Light laser guide. Brand new, never used, gotta make space. Fits 1" diameter tool rest banjo. Paid \$800, will take ~~\$525 or best offer.~~ \$475 obo.



**PRICE
REDUCED**

Rick Judd
612-280-8300

See our Marketplace section on our website for better photos

Marketplace

ONEWAY 1018 Mini Lathe on a factory stand for sale

This a high quality lathe with a hardened spindle. Everything is in excellent condition. It has a 10" swing over the bed and 18" between centers. It comes with the extension bed that increases the length between centers to 42". You also get a tool rest banjo and tool rest, a steady rest and 12 assorted turning tools. You can look up all the Oneway 1018 lathe specifications on line at www.onewayeuropa.com. This model can't be purchased new anymore but it is still supported and a full line of new Oneway accessories are available at reasonable prices. An advantage to this lathe design is a very small diameter head stock offering little tool interference when turning from the head stock side. The one horsepower variable speed motor runs smoothly in forward and reverse.

I am selling for a friend. Price \$995.00 for the whole kit. Call Eddie Bell 505 440 4997

If anybody is interested in some burls, a tree guy named Junior has some Oak burls for sale he is asking \$500 for 5 pieces. No idea of the size. his phone # is 505-504-4434.



I have 5 segmenting sleds that I don't need anymore and would like to get rid of. They are for 8, 10, 12, 16 and 18 segments. They may need some modifications depending on grooves on the table saw spacing. If interested contact Bob (Rocky) Rocheleau at (505) 235-9002.

Bridge for Sale



This is a sample marketplace posting. We welcome members to use this space for anything related to woodturning. There is no charge for listing an item. Ads will run for about one month. To request a listing, send item and contact info to sale@nmwoodturners.org. Your ad will be reviewed and posted as quickly as possible.

*** You must be an NMWT member to post ads ***

See our Marketplace section on our website for better photos

Please notify sale@nmwoodturners.org once item has sold

2022 Elected Officers, Directors & Committee Chairs

President



Tom Durgin
505-688-1369

Vice President



Larry Linford
505-870-1601

Treasurer



Woody Stone
828-808-7876

Secretary



Sally Breeden
505-352-0159

State Fair



Bill Mantelli
505-400-0266

Membership



Tom McLarty
505-298-3790

Webmaster



Dennis Cahill
505-620-2508

Lead Video



Derek Roff
505-438-1820

Email Administrator



Hy Tran
505-459-8132

Member-at-Large



Ron Bahm
505-881-8845

Equipment & Workshops Beads of Courage Chair



Scott Eckstein
505-270-0516

Logistics



Bob "Rocky" Rocheleau
505-235-9002

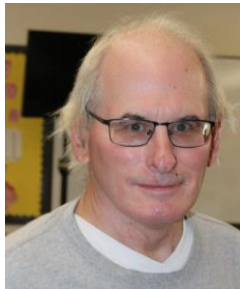
SEEKING

Green wood help

Please speak to a board member regarding any of these positions

2022 Elected Officers, Directors & Committee Chairs

Raffle Coordinator



Dean Cross
575-644-8945

Special Workshops



John Ellis
505-463-7750

Green Wood Manager(s)



Green Wood Manager(s)



Joe "Stretch" Cole
480-216-3580

Past President



Rick Judd
612-280-8300

Newsletter Designer



Traci Durgin
news@nmwoodturners.org
505-688-1370

Apparel Manager



Cindy Edgecomb
505-615-7307

Photographer

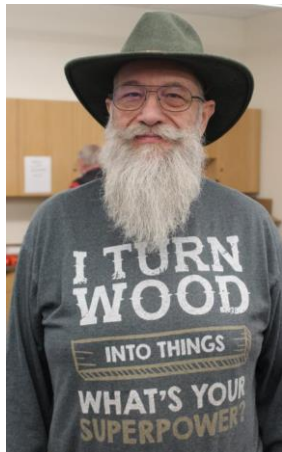


Nancy Matteson
gallery@nmwoodturners.org
801-694-6866

Mentors

Bill Zerby

505-263-6632
Rio Rancho – NM
528 & Southern



Basic spindle turning
& tool sharpening

Scott Kershaw

406-274-2931
Rio Rancho –
Unser & Westside



Basic woodturning skills to include bowls, plates, platters, spindle projects; Green wood processing, coring and twice turning; Tool sharpening and lathe maintenance

Hy Tran

505-459-8132
Albuquerque –
Paseo & Ventura



Beginner and Novice woodturning

John Ellis

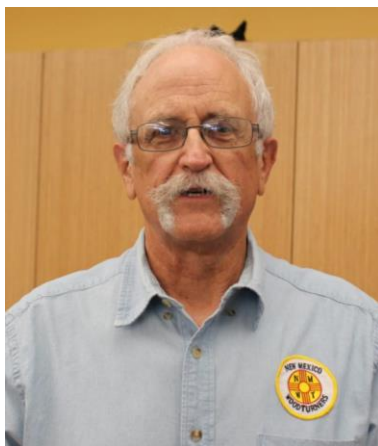
505-463-7750
Placitas



Basic turning, plates, tools & handles

Larry Linford

505-870-1601
Albuquerque



Basket illusion turning and embellishment

Bob "Rocky" Rocheleau

505-235-9002
Albuquerque – NE Heights



Segmenting and bowl turning

Free to NMWT members: give a Mentor a call!

*****WE ARE ALWAYS SEEKING NEW MENTORS*****

Mentors

Rick Judd

612-280-8300
East Mountain



Hollow forms, bowls,
lidded boxes, burls,
natural edge

Ron Bahm

505-881-8845
Albuquerque – NE
Heights



Pen turning, beginning
segment construction,
beginner woodturning

Ray Davis

505-221-4622
Rio Rancho, NM – NW side
raylindavis@r-davis.com



Open and closed Segment
bowls. Stave Bowls, Bowl
turning. Pens.

I have a heated and a/c shop
with 2 lathes ready to go.

Don Roden

763-234-5780
Dovetail Workshop



Skew, carbide tools,
bowls and advanced
turning techniques, like
epoxy turning, finials, and
offset turning

YOUR NAME

Your phone #
Your location



What can you offer?
Help us fill this space

YOUR NAME

Your phone #
Your location



What can you offer?
Help us fill this space

Free to NMWT members: give a Mentor a call!

*****WE ARE ALWAYS SEEKING NEW MENTORS*****

Quick Reference List

(Printer Friendly Version)

2022 NMWT Elected Officers, Directors & Committee Chairs


 news@nmwo
odturners.org

President	Tom Durgin	505-688-1369	Newsletter Editor	Help Needed	
Vice President	Larry Linford	505-870-1601	Newsletter Designer	Traci Durgin	
Treasurer	Woody Stone	828-808-7876	Photographer(s)	Nancy Matteson	801-694-6866
Secretary	Sally Breeden	505-352-0159	Raffle Coordinator	Dean Cross	575-644-8945
State Fair	Bill Mantelli	505-400-0266			
Membership	Tom McLarty	505-298-3790	Equip/Workshops	Scott Eckstein	505-270-0516
Webmaster	Dave Stein	505-266-0356	Green Wood	Help Needed	
Lead Video	Derek Roff	505-438-1820	Green Wood	Joe "Stretch" Cole	480-216-3580
Email Administrator:	Hy Tran	505-459-8132	Logistics	Bob Rocheleau	505-235-9002
Member-at-Large	Ron Bahm	505-881-8845	Special Workshops	John Ellis	505-463-7750
Past President	Rick Judd	612-280-8300	Apparel Manager	Cindy Edgecomb	505-615-7307

Quick Reference List for Mentors

Free to NMWT members: give a Mentor a call!

Bill Zerby Rio Rancho – NM 528 & Southern	➡	505-263-6632	➡	Basic spindle turning & tool sharpening
Hy Tran Albuquerque – Paseo & Ventura	➡	505-459-8132	➡	Beginner and novice woodturning
Don Roden Dovetail Workshop	➡	763-234-5780	➡	Skew, carbide tools, bowls and advanced turning techniques, like epoxy turning, finials, and offset turning
Larry Linford Albuquerque	➡	505-870-1601	➡	Basket illusion turning and embellishment
Rick Judd East Mountain	➡	615-280-8300	➡	Hollow forms, bowls, lidded boxes, burls, natural edge
Ron Bahm Albuquerque – NE Heights	➡	505-881-8845	➡	Pen turning, beginning segment construction, beginner woodturning
Bob "Rocky" Rocheleau Albuquerque – NE Heights	➡	505-235-9002	➡	Segmenting and bowl turning
Ray Davis Rio Rancho – NW side.	➡	505-221-4622	➡	Open and closed Segment bowls. Stave Bowls, Bowl turning. Pens.
Scott Kershaw Rio Rancho – Unser & Westside	➡	406-274-2931	➡	Basic woodturning skills to include bowls, plates, platters, spindle projects; Green wood processing, coring and twice turning; Tool sharpening and lathe maintenance.

Members are always welcome to contact the people on the mentor list for guidance to better turning ideas and techniques

*****WE ARE ALWAYS SEEKING NEW MENTORS*****

Membership Renewal

Membership Dues

Membership dues renewals are due on or before the last day of the month in which the member's current membership term expires. Members who do not renew within thirty (30) days after their membership expiration date will no longer have access to member privileges and will no longer receive the monthly newsletter. Annual dues are as follows:



One year: \$30 for an individual; \$35 for a family
 Two Years: \$55 for an individual; \$65 for a family
 Three Years: \$75 for an individual; \$90 for a family
 Lifetime: \$300 for an individual; \$350 for a family

Additional Fees

1. An individual member who subsequently adds family members will pay the difference between the individual dues and the family dues rate for the remainder of that membership year (i.e., a one-year individual member adding family members would pay an additional \$5.00 dues for the remainder of the membership year).
2. A member requiring a mailed copy of the monthly newsletter will pay an additional \$10 per year to cover cost of mailing.

Renew Online

We are very pleased to announce that you can now pay your membership dues with a credit card on the NMWT website at:

[https://www.nmwoodturners.org/.](https://www.nmwoodturners.org/)

To access online dues payment, simply go to the new "Membership" tab near the top of the homepage and select "Pay Online" from the drop-down menu. This will take you to a secure website managed by Converge, our credit card service provider. There you will find a series of "Buy Buttons" that are clearly labeled with each membership dues option. Simply select the dues option that you want and then hit the "Checkout" button.

You will need to fill in all of the contact information on the payment processing page so that the Treasurer can confirm that our membership records are up to date and also so that he can send your new membership card by regular mail. Also, due to some reporting limitations of the Converge website, you will need to once again select the dues option you want from the drop-down menu labeled "Items Purchased". Fill in your credit card information and hit the "Submit Payment" button to complete the transaction. You should receive an "Order Confirmation" with full details of your purchase by e-mail, and the Treasurer will mail your membership card to you. That's all there is to it!

[Web-Based Credit Card Dues Payment Now Available](#)

Renew by Mail

You can, of course, still mail a check along with current contact and e-mail information to our **Treasurer, Woody Stone, at 2 Blue Corn Ct. Sandia Park, NM 87047.**

The easy way to do that is to go to that same new "Membership" tab on the NMWT homepage and select "Membership Form" from the drop-down menu.

Fill in the form (**PLEASE PRINT CLEARLY**) and mail it to Woody with your check. Should you have any issues or questions regarding the new Credit Card payment system or if you are not sure if your membership expires at the end of 2020, feel free to call Woody at 828-808-7876 or e-mail him at eesphoto492@gmail.com.

Scan our QR code to access our webpage



How to Contribute to High Desert Turning

The NMWT’s newsletter editor has submitted High Desert Turning to the AAW’s 2020 and 2021 Best Chapter Newsletter Contest. Unfortunately for the NMWT, High Desert Turning has not been selected in the top 3 chapters either year. However, the NMWT chapter website won 1st prize in 2020 for the Best Chapter Website Contest. So, we know it’s possible to rank highly among the numerous chapters of the AAW. Much of the website content can be found in High Desert Turning.

So, now you ask, “What is in it for me?” Well, we will get to that. But first, our ask is this:

Here’s what’s in it for you:

Submit a short snippet, article or outline of a shop tip or trick you use. You’ll be surprised by how many folks will benefit from your personal idea or solution
 Take 2, 3, 4 or 5 photos of your process, pieces or how your tip or trick comes together to illustrate how the membership can implement your idea in their shop
 If appropriate, share credit where credit is due should you have benefited from a social media post, YouTube video or viewing an in-person demonstration.

You are inspiring dozens upon dozens of other turners implement shop solutions that ease their way and improve their flow and turning
 You have ideas and solutions that many folks likely envy and would benefit from knowing. There’s gratification in uplifting fellow turners

The club has a large tote of exotic, seasoned and figured timber that was acquired during lockdown and you will be free to select a piece of your choice for every published tip or trick. The tote has wonderful turning stock and you can rifle through it for your choice.

Please consider contributing to the NMWT newsletter High Desert Turning! No tip too elementary and no trick too simple will go unpublished. We count on you to make our newsletter awesome. Please send your contribution to news@nmwoodturners.org

NMWT’s Logo Apparel

Caps (Baseball)	\$15
Long Sleeve Denim Shirt	\$30
Short Sleeve Denim Shirt	\$30
Short Sleeve Snap Shirt	\$30
Polo (golf) Shirt w/Pockets	\$30
T-Shirt V-Neck	\$20
Smocks	\$50

Items include embroidered NMWT logo
 Names embroidered on shirts are additional \$5.00
 Sizes XXL, 3XL, 4XL and up are an additional \$3.00
 Contact: info@nmwoodturners.org
 Get order forms at the club meetings or use the links below to access the order forms. Once completed, turn your form in to a board member with payment. *Orders are submitted on a quarterly basis.*
 Full payment for an order will need to be submitted with each order form before it can be processed! Order placement cut off dates for each quarter will be as follows:



[Order Info](#)

[NMWT Shirt/Cap Form](#)

[NMWT Smock Order Form](#)

Quarter	Months	Order Meeting	Delivery Meeting
1st	Jan-Mar	Feb	Mar
2nd	Apr-Jun	May	Jun
3rd	Jul-Sept	Aug	Sept
4th	Oct-Dec	Nov	Dec

Discount & Rebate Partners

DAKOTA

Dakota Hardwoods -

Albuquerque, NM

3700 Singer Blvd. NE, Suite A, Albuquerque, NM 87109

Office: 505-644-WOOD (9663)

Monday-Friday: 8:00am - 5:00pm

Saturday-Sunday: Closed



NMWT members receive Wholesale Prices. Rugby's has hardwoods, Thermofused Melamine, plywood, veneers, and furniture grade pine.

Say you are with the NMWT for a discount.

Penn State Industries

your wood turning & dust collection source | 1-800-377-7297

www.pennstateind.com

Register as a member of New Mexico Woodturner at Penn State Industries and automatically get 10% off (in addition to most other promos) your entire order !!! Yes! In effect, you will be doubling dipping on the discounts!!!

Register by sending an email to hy.d.tran@gmail.com with the name, address and email to which your Penn State catalogs are sent. Once you're registered, you'll automatically get 10% off every time you shop online (not applicable to phone or mail orders).



DENDROTECHNOLOGY
TIN SHED MILLWORKS

(505) 980-6161 www.dendrotsm.com

LIVE EDGE SLABS, TURNING BLANKS, CUSTOM MILLING

We offer 10% off our listed prices to members and give a free item from our oddments box or a turning blank to first time member customers.



**8100-M4 Wyoming Blvd. NE, #188
Albuquerque, NM 87113**
